

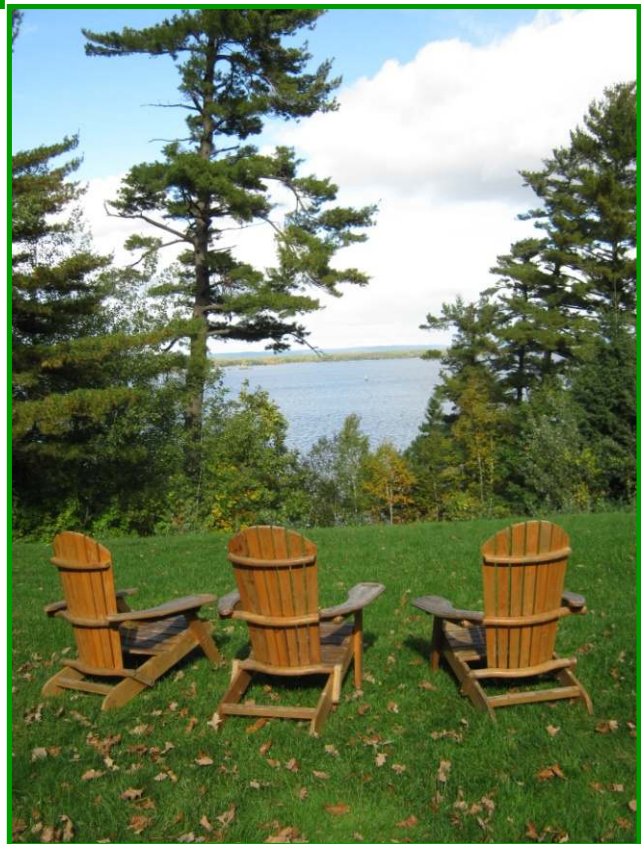


Rideau Park United Church 2010 Annual Report

2203 Alta Vista Drive
Ottawa, Ontario K1H 7L9

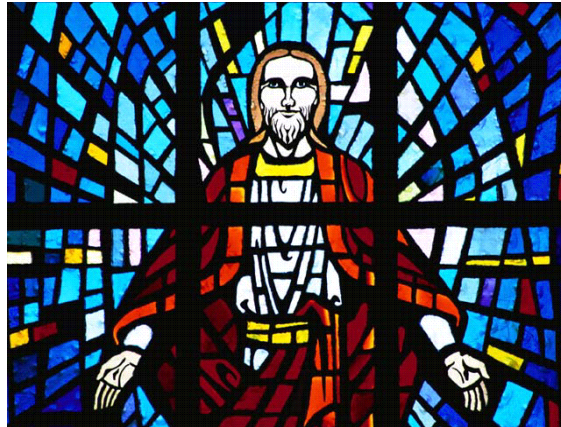
613-733-3156
rideaupark.ca

*Along the paths of life
and amongst the trees,
God's resplendent beauty
awaits us.*



Fall Retreat Galilee House, Arnprior 2010

In Memoriam



Members, Adherents and Friends of Rideau Park

Glenford Whitman Armstrong

Frances Marion Atwell

John "Jack" Brown

John "Jack" Carmichael

James Douglas Colwill

Mary Dornan

Marion Draper

Ralph Nelson Gallinger

Graham Cameron Gibb

Joseph Goods

Stewart Hughes Green

Myrtle "Pat" Hall

Albert Wilfred Halsall

Audrey Lamb

William "Gerry" McKendry

James Robert Nelson

Mary Pelisek

Elena Bartholin Fiuerua Ross

Joan Margaret Sproule

William Spencer Treasure

John James Stott

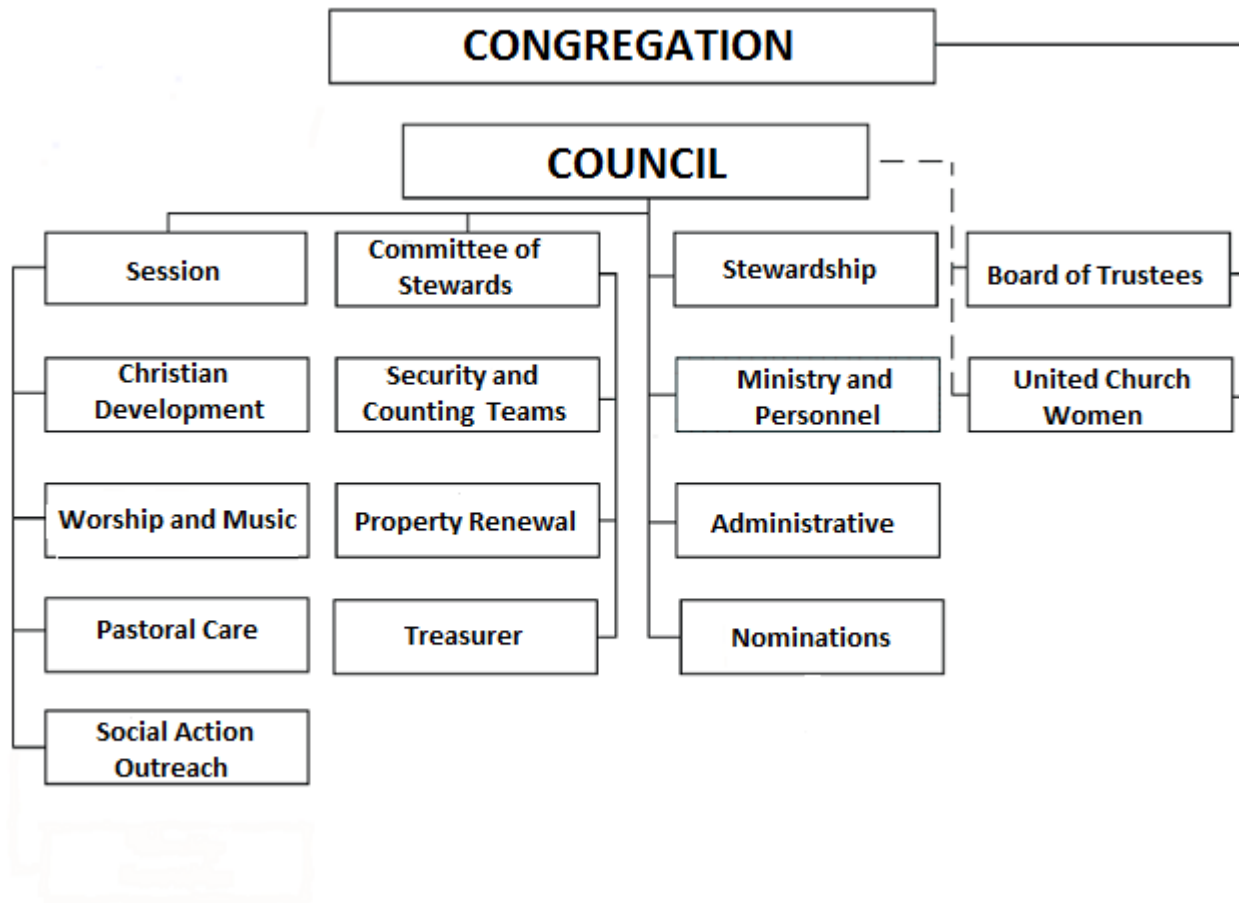
Rosemary Anne Wilkins

William James Wilson

I am the resurrection and the life. Those who believe in me, even though they die, will live, and everyone who lives and believes in me will never die.

John 11:25, 26

MINISTER EMERITUS	Rev. Dr. Ott McKennitt	
STAFF	Rev. Steve Clifton	Minister of Christian Family and Worship
	Rev. Elizabeth Bryce	Minister of Community and Worship
	Rev. Georgina Fitzgerald	Minister of Pastoral Care
	Richard Glasser	Director of Music
	Jane Stott	Christmas Cheer Co-ordinator (Oct-Dec)
	Debi Brown	Administrator
	Erin O'Neill	Administrative Assistant
	Paul Sorg	Sexton
COUNCIL	Marilyn Law	Chair
	Wayne Bond	Vice-chair
	Steve Shipley	Secretary
	Doug Robinson	Chair of Session
	Karen Humphreys	Session Representative
	Cameron Jeffrey	Session Representative
	Jeff Allo	Chair of Stewards
	Bob Roden	Stewards' Representative, Treasurer
	Tony Bernard	Stewards' Representative
	Brian Hamilton	Chair of Stewardship
	Doreen Hamilton	Chair of Ministry and Personnel
	Karen Lamb	Ottawa Presbytery Representative
	Gavin Currie	Chair of Board of Trustees
	Barbara Robinson	President of United Church Women
	Nancy McPherson	Chair of Administrative
	Sandra Weedmark	Member at large
	Greig Scott	Member at large
	COMMITTEES	
SESSION	Doug Robinson	Chair
	Karen Lamb	Clerk
Sub-committees of Session		
Christian Development	Drew Presley	Chair
Worship and Music	Shailja Verma and Patricia Whitridge	Co-chairs
Social Action and Outreach	Sandra Weedmark	Chair
Pastoral Care	Alyce Dunnewold	Chair
STEWARDS	Jeff Allo	Chair
Sub-committees of Stewards		
Treasurer	Bob Roden	
Property	Rod Hagglund	Chair
Counting Teams	Andrew Jeffrey	
Property Renewal	Brian Hamilton	
STEWARDSHIP	Brian Hamilton	Chair
NOMINATIONS	Shanti Inman	Chair
MINISTRY AND PERSONNEL	Doreen Hamilton	Chair
ADMINISTRATIVE	Nancy McPherson	Chair
BOARD OF TRUSTEES	Gavin Currie	Chair
UNITED CHURCH WOMEN	Barbara Robinson	President
PRESBYTERY REPRESENTATIVES	Brian Irvine	Karen Lamb
	Don Melick	Chris Inrig
ENVELOPE SECRETARY	Barbara Jeffrey	



Number of households as of December 31, 2010.....	565
Total number of persons as of December 31, 2010.....	1,225
Members received through Transfer of Certificate.....	4
Members removed through Transfer of Certificate.....	0
Persons removed by death.....	18
Number of weddings.....	16
Number of funerals.....	20

Baptisms

Grace Edythe Fern Allo	James Scott MacKinnon
Neve Gillian Cantrell	Trent Riley Nelson
Rebecca Stephanie Ann Crowell	Alyssa Anne May Robertson
Cameron Andrew Gibson	Hudson Jack Harrison de Savoye
Brooklyn Anne Marguerite Giles	Alistair James McGregor Sy
Lauryn Aba Kane	Danielle Victoria Douglas Turcotte
Victoria Love Kane	Preston Cameron Michael Wagner
Adria Maria Katchmar	Nicholas Wilmer Wilson
Matthew Allan Bowles-Lareau	Willow Hannah Lee Wright
Dorothy Rose Lockhart	

Adult Baptism

Fiona Armstrong

Confirmation

Fiona Armstrong	Eric Little
Chloée Detchou	Merina Shulist
Owen Clifton	Michelle Winkel
James Stone	

Transfers to Rideau Park

Melanie Achtenberg	Joanne and Christopher Winkel
Christyane Allard-Sherif	

Rideau Park United Church is a family of people who joyfully proclaim a loving God as revealed in Jesus Christ.

As caring members of this church, we seek to do this by:

- ✠ joining together in worship, prayer and music;*
- ✠ reading and studying the Bible;*
- ✠ living a Christian life;*
- ✠ nurturing both young and old in Christian education programs;*
- ✠ seeking justice for everyone; and*
- ✠ continually sharing our faith, hope, talents and resources with our community, country and the world.*

Mabel and Norman Achtenberg

Marion Atwell

Robert Bayne

Ed Becker

Al Chapman

James Douglas Colwill

Lily and Leslie Cross

Earl H. Dudgeon

Linda Elliott-Doshen

Ralph Gallinger

Graham Gibb

Pat Hall

Ron Ireland

Harris and Mary Mossman

James (Jim) Nelson

Colin and Marjorie Ogden

Gerald Palmer

Robert Schnare

George Sylvester

Danielle Turcotte

Elizabeth van Diepen

Lorna and Ron Watson

Cassie Whitteker

Bill Wilson

Canadian History

After having dug to a depth of 10 meters last year, scientists in New York state found traces of copper wire dating back 100 years and came to the conclusion that their ancestors already had a telephone network more than 100 years ago. Not to be outdone by New Yorkers, California scientists dug to a depth of 20 meters, and shortly after, the LA Times wrote: "California archaeologists have found traces of 200 year old copper wire and have concluded that their ancestors already had an advanced high-tech communications network a hundred years earlier than the New Yorkers."

One week later, the Moose Jaw Times Herald in Saskatchewan reported the following: "After digging as deep as 30 meters in sagebrush fields near Moose Jaw, Ole Karbaluski, a self-taught archaeologist, reported that he found absolutely nothing. Ole has therefore concluded that 300 years ago, Saskatchewan had already gone wireless."

The secret to a good team is cooperation, not competition!

We have enjoyed another good year with a full staff complement at Rideau Park in 2010. That stability improves our ability to support the ministry of the congregation as well. We have all witnessed how the ministry of lay people at the church thrives when we work well together as a staff team. The creativity and ideas shared by the volunteers is truly inspirational for us. While staff members take part in initiatives such as improved communications and congregational development, it is the faith and hard work of the congregation that brings these things to life. Co-operation, rather than competition, is what characterizes our initiatives as Christians, for we are able to embody the words of First Corinthians 12 when we work together as the body of Christ.

In 2010, our cooperation extended beyond the congregation's life and work. In past years we have been building stronger relationships with community partners, within the church and beyond. We have built stronger relationships with South East Ottawa Community Health Centre, the Community Houses at Banff-Ledbury and Blair Court. We have increased our participation in hosting Presbytery and having our youth and others participate and lead in Presbytery youth work. We have opened our doors to Emmanuel United Church, sharing our second service and worship space with them.

Sometimes all this creativity and reaching out can be stressful even while it is exciting, and we as staff have found ourselves wondering "what next?!" As a staff team, however, we have been blessed with the caring of the congregation, the Council, and the Ministry and Personnel Committee, who always help us to see the bigger picture of what we are trying to accomplish together. We thank God for your support and look forward to another year of being in ministry with Rideau Park United in 2011.

Elizabeth

Georgina

Richard

Debi

Paul

Erin

Steve

Council has met five times since the last report. The Council membership is as follows:

Chair	Marilyn Law
Vice-Chair	Wayne Bond
Secretary	Steve Shipley
Chair of Session	Doug Robinson
Session Representatives	Karen Humphreys Cameron Jeffrey
Chair of Stewards	Jeff Allo
Steward Representatives	Bob Roden (Treasurer) Tony Bernard
Chair of Stewardship	Brian Hamilton
Chair of Ministry and Personnel	Doreen Hamilton
Ottawa Presbytery Representative	Karen Lamb
Chair of Trustees	Gavin Currie
President UCW	Barbara Robinson
Chair of Administrative Committee	Nancy McPherson
Members at Large	Sandra Weedmark Greig Scott

The Ministers and the Church Administrator are ex-officio, non-voting members.

Council started the year off with a request for funds for Owen Clifton to assist him in a trip that he took to El Salvador with some of the youth from Emmanuel United Church. Council was pleased to provide funds to him from the Speakman Fund.

This year the sum of \$6,173 was available from the Rideau Park Foundation for projects within the congregation as well as outreach projects. The following were approved:

- In April, Council approved \$1,500 for Pastoral Care in Secondary Schools. This is a project that has been in existence for twenty years and aims to promote interfaith co-operation by providing spiritual/pastoral care in Secondary Schools in which Elizabeth participates. They wanted to develop a website and as well produce a short video as part of a new website. The existing partners include the Aboriginal community, Baha'i, Buddhist, Jewish, Muslim and various Christian denominations. The review committee recommended the request as the mandate of the group and their intentions met the criteria of the Foundation's mandate.
- Council approved \$1,000 from the Foundation to be used by the Congregational Development Task Group to update the Environics Report and any other expenses that they might incur. Any unused funds were to be returned to the Foundation.
- In November, Council approved an application for funds from Frances Dawson of the Social Action/Outreach Committee to assist Blair Court Community House in starting a program to help adults obtain their high school education. The review committee met with the Director of Blair Court Community House to discuss the application and subsequently recommended the request for \$3,000.

In April, Council approved a recommendation from the Trustees that an Endowment Fund be set up to receive the bequest from the Hancock Estate as well as any other bequests that may be received that are not designated for a specific purpose. Council also approved the Trustees' request that a percentage of the Britt Estate Funds be placed in the Endowment Fund each year. In November of each year, Council will set the percentage for the upcoming year of the amount to be designated for the Endowment Fund.

Council approved the Harassment and Violence in the Workplace Policy as prepared by the Ministry and Personnel Committee.

In January, we were approached by Emmanuel United Church about whether we would be able to accommodate them during a reconstruction project they were undertaking. Initially they thought the construction would be starting in May to be completed by the end of August. A meeting was held with members of Emmanuel United in January to determine exactly what their requirements would be. Unfortunately their project encountered difficulties and we were not contacted again until June when they asked if they could have their worship service at Rideau Park at our 11:15 a.m. service commencing September 12, 2010. A further meeting was held with them at the beginning of June. Council debated the issue at its June meeting and agreed that Emmanuel would be permitted to have their worship service at our 11:15 a.m. service. It was also agreed that one of our Ministers would participate in the service and Rideau Park members would be given the weekly Rideau Park Bulletin as well as the bulletin from Emmanuel. At the end of August a meeting was convened at Rideau Park so that the committee chairs of each congregation could meet to discuss various needs and requirements. Emmanuel began worshipping at our 11:15 service on September 12th. Although they had hoped to be back in their building by the end of November, because of unforeseen difficulties that they encountered, they will continue to worship at Rideau Park until approximately the end of April.

Council considered and approved a request to name the Chapel in honour of our Minister Emeritus, Rev. Dr. Ott McKennitt and his wife, Flora. A plaque was designed and installed. The unveiling of the plaque and naming of the Chapel took place at a service on October 31st. Mabel Bannerman and Doug Robinson spoke on behalf of the congregation, who, in naming the Chapel, joyfully honour the ministry of the Rev. D. Ott McKennitt and of Flora McKennitt, for their deep and abiding faith and spiritual leadership of the Rideau Park United Church congregation. The Chapel is dedicated in their name and to the glory and praise of God.

This year was the 85th Anniversary of the United Church and Head Office paired congregations across Canada. We were paired with Stuart Lake/Fort St. James Pastoral Charge in British Columbia. Council members signed a card which was sent to them together with a brief history of our congregation. We subsequently received an acknowledgement from them with a brief history of their church.

Reports are attached from the Communications Task Group and the Congregational Development Task Group, both of which have worked very hard this year as can be seen from their reports.

At this time I would like to thank the congregation for giving me the opportunity to serve as Chair of Council. It has been a busy two years but two years that I have very much enjoyed. It was made all the easier by our dedicated staff who work so hard to make this such an active and vibrant place and I thank them for all they do and for all the assistance that they so willingly gave to me. This is truly a blessed congregation.

Respectfully submitted,
Marilyn Law, Chair

Urban Holmes defines spirituality as a longing or emptiness that we feel within. Our own spiritual path is shaped by the ways in which we try to fill the void or in how we work to meet the longing. Our own spiritual work is found in what we do to connect to God.

Spirituality is a strong and vibrant thread that is woven through all that we do at Rideau Park. From Youth Bible Study to our outreach work, from choir practice to committee meetings, we are always seeking to be in communion with the Holy One and to help others to find that which will satisfy their souls and nourish their spirits.

In 2010 there were a number of events and activities that were directed at deepening the spiritual life that we share. Elizabeth led a number of book studies, in spring and again in the fall. Spirituality retreats were held in spring and fall; on each occasion about 15 adults gathered at Galilee in Arnprior for a time of fellowship, reflection and renewal. Sharon Sanderson offered a Quiet Day at the church, a retreat held close to home.

Annually in the season of Lent we try to place a special emphasis on spiritual growth. Meetings are cancelled in order to make room for God. A group gathers on Saturday morning to share food, fellowship and study. This Lent our Wednesday night study was "Everything You Wanted to Know About the Bible but Were Afraid to Ask". Each evening's study session was a response to questions from group participants. Our topics included the doctrine of original sin, the meaning of the Beatitudes and the giants of Genesis 6. Our labyrinth is also made available in each week of Lent.

It is worth noting that all of our studies go online. If a session is missed or if someone cannot get out to participate, all of our Bible, book and topical studies have a written component posted on or linked to on our church website. It's almost like being there.

We also have a congregational prayer chain. The prayer chain is a place to bring prayers and concerns in confidence so that others in our faith community can pray for us and those we love. If you would like to join the chain, please speak to our coordinator, Doreen Hamilton.

We have plans for some new initiatives in 2011. We look forward to another year of growing in the spirit.

Blessings,
Reverend Steve Clifton

The Communications Task Group was formed by Council in June 2009 to develop and facilitate a broader and more systematic approach to Rideau Park's communications and advertising, particularly to the wider community. In January 2010, Council approved a set of Priority Communications Initiatives, as developed by the Task Group, for their implementation throughout the year.

Members of the Task Group for 2010 comprised those involved in various facets of Rideau Park communications, including Scott Inrig (webmaster, Rideau Park website), Marcia Gosse (editor, Churchpost), Barry Dewis (advertisements to VISTAS), Nancy McPherson (Chair, Administrative), Marilyn Law (Chair, Council), Rev. Elizabeth Bryce, Debi Brown (Administrator) and Erin O'Neill (Admin. Assistant). Wayne Bond served as the Chair of the Task Group.

During 2010, the Communications Task Group both continued and initiated a wide range of activities, which can be grouped under five major objectives:

- 1) Oversight and support for established communications vehicles (e.g., Rideau Park website, VISTAS advertisement, Churchpost, advertising of key events in selected newspapers);
- 2) Filling the gaps in communications actions or support at Rideau Park (e.g., initiation of monthly congregational emails, advertising in the EMC Church Directory, articles in community newspapers, testing the use of Twitter, live streaming our church service on the web, development of a welcome brochure);
- 3) Providing the means for facilitating communications by others in the congregation (e.g., testing of Google Calendar for updating events information, development of a communicators' checklist and a print media contact list, display rack maintenance);
- 4) Review and guidance for key Rideau Park communications rebalance, impact and consistency (e.g., the annual Rideau Park Activity Booklet, the Christmas events brochure, the message on the outdoor lighted sign);
- 5) Evaluation of the effectiveness of our communications and advertising through surveys (e.g., people attending the Christmas Treasures Bazaar were surveyed this year).

More specifically, some of the communications initiatives undertaken are highlighted below:

- The weekly advertisement in the EMC Church Directory was continued throughout the year and expanded at Christmas time. The listing appears in EMC Ottawa South, Ottawa West, Nepean-Barrhaven, Kanata, and Manotick for a total reach of well over 100,000 households;
- Monthly emails to the congregation on upcoming church services and events commenced in March. Guidelines on the length, frequency, and content for these emails were approved by the Task Group. Session undertook a survey of congregational members to update the list of email addresses;
- Live streaming of the audio of the 9:30 a.m. Sunday service was introduced on the Rideau Park website in the spring and has been well received by congregational members.
- A Welcome brochure and card with contact information were produced. They have been distributed to newcomers by the ushers at Sunday services since June, and are available in the display racks;
- Four articles on Rideau Park people and events were published in VISTAS in 2010, and one has been accepted for The Clarion. The articles were written by James Nelson, Owen Clifton, Rev. Elizabeth Bryce and Heather Ingrams.
- In March, a Communicators' Checklist and Print Media Contact List were prepared and distributed to all committee chairs and event leaders to assist them in advertising their church events and activities. It was updated in August and January.

- Throughout the year, the Task Group has advertised key events in selected venues: the Citizen Our Town, VISTAS Community Calendar, EMC What's On This Week, and News and Events on the RP website. The survey results from the Bazaar showed that many attendees heard about it from these sources.
- Preliminary research was done, along with Stewards, on the design and the bylaw requirements for a new outdoor sign with an electronic message board.

In November 2010, Council noted that the many communications objectives and initiatives, be they oversight, review, support or implementation, were ongoing in nature, and approved the continuation of the Communications Task Group, now known as the Communications Team. The activities initiated by the Task Group in 2010 will continue, with a particular focus on the further development of:

- a writing team for publishing articles about Rideau Park in community newspapers and other venues;
- support of the congregational development initiative through communications products;
- develop a media contact list for radio, TV and websites;
- assess and use Google Calendar (or an alternative) for maintaining an up-to-date list of events for use by Rideau Park communicators and advertisers;
- lead the design of the communications messages for proposed projects such as the Cunningham entrance video screen, or a new outdoor sign.

I would like to thank the Task Group members, as well as others involved, for their creativity, commitment and hard work during 2010, which proved to be a busy year in communications.

Respectfully submitted,
Wayne Bond, Chair

Total average Sunday attendance at Rideau Park has decreased by 12% in the last 5 years and by 23% in the last 10 years. Declining attendance and enrolment are not unique to the United Church and it is not just churches that are losing members. Fewer Canadians now belong to Boy Scouts, labour unions, political parties and service clubs such as Kiwanis or Rotary.

In light of declining attendance, a Congregational Development Task Group was established and tasked to review a number of existing support materials; to update the understanding of our serving area and its demographics; to determine who in our area we should be attempting to invite into the congregation; and to consider ways of reaching new members and increasing participation.

The task group consists of Greig Scott (Chair), Marilyn Law, Graeme Beattie, Wayne Bond and Brian Hamilton from the congregation. Staff participation has mostly been provided by Steve Clifton, but Elizabeth Bryce and Debi Brown have lent their support as well.

Support materials such as the Affirmation Project Report remind us that Rideau Park has much to offer in terms of faith, spirituality, nurturing, programs, staff, excellence, use of talents, opportunities to serve, a sense of purpose, community, fellowship, inclusiveness – the list could go on. Polling and lifestyle research suggests that what we have to offer is very much compatible with the social values and attitudes that are held in high regard by many of the neighbourhoods within our serving area.

Perhaps change is not the key to growth so much as awareness, encouragement and invitation. At their meeting in November, Council endorsed this approach and approved the formation of the Congregational Development Steering Team. The steering team reports to Council and is charged with developing and overseeing campaigns that are carried out by small teams that are put in place for only as long as it takes to execute each initiative. Steering team membership will not be limited to Council, but will ideally include several representatives from the congregation who have a variety of backgrounds and expertise.

Our first campaign included the development of a Rideau Park United Church bookmark that was distributed at a number of events during the Christmas season. The main intent of this bookmark was to inform those who attend on a less regular basis, as well as visitors from the broader community, of some of the values and programs that we have to offer.

Readers of this report who are interested in trying their hand at developing or participating in a future campaign, are invited to contact one of the task group members for further details. Thanks to all who helped out in 2010 and we look forward to your involvement in 2011.

Respectfully submitted,
Greig Scott, Chair

The United Church governance includes four levels: General Council; Conference; Presbytery; and Congregation. Rideau Park is a member of Ottawa Presbytery and Montreal and Ottawa Conference. The Ottawa Presbytery is one of the largest in the country. There are 60 pastoral charges with 76 congregations. There are 42 full time Ministry Personnel and 27 serving in part time positions.

The longest continuous clergy membership in the Presbytery belongs to our own Minister Emeritus: the Rev. Dr. Ott McKennitt who went on the roll in 1959 with his call to Rideau Park. There are 6 candidates for ministry and 13 people in discernment. One candidate was ordained in May 2010. Rideau Park's clergy are all members of Presbytery as are the elected Lay Presbyters: Chris Inrig, Brian Irvine, Karen Lamb and Don Melick.

This past year meetings were held at Kanata, City View, Parkdale, Fitzroy Harbour (St. Andrew's), Dominion Chalmers, Glen Cairn, Rideau Park, MacKay and Aylmer. Presbytery meets the second Tuesday of the month from September to May. This year, two of the meetings were program meetings while the others were a combination of dealing with the business of Presbytery and a presentation/discussion component. Some of the discussions and presentations covered topics such as:

- Theological Colleges, the Carlington Chaplaincy, Ploughshares;
- the General Secretary's request for input about the future direction of the denomination;
- change in the church and the role of Presbytery;
- changes to the settlement process;
- Youth Ministry stories and Children and Young Family Ministry;
- AFFIRM United;
- the 85th anniversary of the United Church of Canada;
- Journeys of Black Peoples; and
- the Church and Society Committee's campaign "Put a Roof on Poverty".

2010 was an exciting year for Youth and Young Adult Ministry. Highlights included:

- 17 Camp Awesome programs and creating leadership opportunities for youth;
- Youth from Ottawa and other Presbyteries came for Worshiplode, a youth gathering opportunity during Winterlude;
- The ecumenical project "Open Table" which offers the opportunity for young adults to gather over a meal became firmly established;
- In March the YAYA Minister led a mission trip to Nicaragua. Owen Clifton from Rideau Park participated;
- Sadly, Andrew Hyde, the YAYA Minister, returned to congregational ministry in south western Ontario in July, and a search is underway to fill the vacancy.

Ottawa Presbytery is fortunate to have two established funds that resource youth and young adult ministry: the Bill Scrivens' Memorial Youth Fund established in the early 1990's; and a new fund available in 2011- the James Baillie Helping Others Fund. They presently have \$400,000 and \$500,000 respectively. The earned revenues each year support youth programming and the YAYA ministry position.

Respectfully submitted,
Karen Lamb, Lay Presbytery Representative

The Session, made up of church Elders, is responsible for overseeing the spiritual life and interests of the congregation. The Session Committees are: Social Action and Outreach, Pastoral Care, Christian Development, Worship and Music. Many Elders serve on these committees. Reports from individual committees are found in this annual report.

Elders also greet and usher at Sunday worship services and serve Communion. Some act as Duty Officers during the week and on Sunday mornings. Karen Lamb drafted an information kit regarding the duties of Sunday morning duty officers. Elders continue to do visitations and make phone calls to people in their Elder's district. A number of people have requested that their names be put on email contact lists and this has reduced some of the demand on Elders for phone calls and visits and is working well.

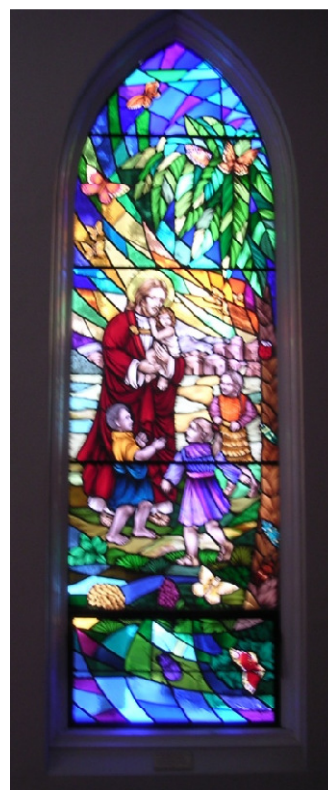
A key initiative this year has been to discuss ways to develop a welcoming culture. Everyone needs to talk to visitors and newcomers in the church. "Welcoming" needs to reside within a committee to ensure that we follow through on ideas to welcome new people. The question of welcoming was discussed at all Session meetings this year. Ottawa Presbytery asked Presbyters to take the following question back to their congregations –What do you hope church will look like in fifteen years? This question was discussed in table groups at Session and a number of points were made which Karen Lamb took back to Presbytery.

This year the stained glass window commissioned by the Becker family was installed in the chapel and dedicated at a service on June 20th. The theme of the window is God's presence in every living thing: "Apprehend God in all things, for God is in all things. Every single creature is full of God and is a book about God. Every creature is a word of God. If I spend enough time with the tiniest creature, even a caterpillar, I would never have to prepare a sermon. So full of God is every creature." (Meister Eckhart) The window contains a picture of Jesus with children as well as over 15 butterflies and beetles, in keeping with Ed Becker's lifetime interest and work with bugs. The window is dedicated in loving memory of Ed Becker and in honour of Martha Becker. "All things bright and beautiful, all creatures great and small, all things wise and wonderful: in love God made them all.

The lists of baptisms, marriages and funerals at Rideau Park are noted at each Session meeting and are listed elsewhere in this Annual report. The names of retiring Elders and those of new Elders are listed in this report as well. This year we were saddened by the death of a long-time Elder, Marion Atwell. She was very active in many areas of church life at Rideau Park and we will miss her.

We thank Karen Lamb, the retiring Clerk of Session, for providing faithful and excellent service to Session over the last three years. We are also grateful to Jessie Weldon-Gibb for her excellent work in maintaining the Elder district lists and identifying those who should be moved to the pastoral care list.

Respectfully submitted,
Doug Robinson, Chair



The Committee of Stewards is responsible for the management of church temporal and financial affairs. In 2010 the Committee met monthly, except for February, April, July and August. Last year the Committee members were:

Chair	Jeff Allo	
Secretary	John Durkee	
Treasurer	Bob Roden	
Administration Technical Support	Don Ford	
Counting Teams	Andrew Jeffrey	
Property	Rod Hagglund	John Scollick
Representative on Council	Tony Bernard	
Security	Robert Blake ¹	
Stewardship Liaison/Property Renewal Fund	Brian Hamilton	
United Church Women representative	Mary Harris	
Members at large	Wayne Bennett	Michael Inrig
	Bill Ott	Gaveen Cadotte
	Nadia Senyk	
Staff Liaison	Debi Brown (<i>ex officio</i>)	

¹ *Non-member*

Finance: We have ended 2010 with a small deficit of \$6,787. This has been a significant achievement, as we had a large deficit to make up at the start of December. The congregation responded very positively to special appeals throughout the year and especially at year end. Again this year the UCW has been exceptionally generous in its contribution to our operations. All of these donations enabled us to finish the year in a good financial position. We are very grateful to the congregation for its continued commitment to the ministries and programs of the church.

We expect that the challenges faced in 2010 will continue through 2011. Membership has declined over the last several years, while costs continue to increase although at a very slow rate. Careful management of budgets, cost saving initiatives and new sources of revenue, such as facility rentals, have all helped offset the impact of the decline in membership. While we appeal to all members and adherents to think prayerfully about the resources they can commit to the ministries and programs of our church, we will be engaging the congregation more formally this year as we strive to find the right financial balance.

Last year Rideau Park's external accountants, Collins Barrow Chartered Accountants, conducted a program review of the 2009 financial statements. Nothing came to their attention that caused them to believe that the financial statements were not, in all material respects, in accordance with Canadian Generally Accepted Accounting Principles. The accountants' full report is available at the church.

Property Operations: Overall property operations costs were reduced in 2010, at least in part because of the milder winter temperatures and reduced snowfall. (Savings were partly offset by the cost of repairs to the heating system.) Buildings and grounds continue to be in generally good condition, although roof repairs will be considered in 2011 if minor leakage issues need to be addressed.

The Stewards continue to monitor and maintain the church facilities. The annual "walk about" identified only minor problems with the church building and grounds. However, in addition to the ongoing maintenance tasks, Stewards also oversaw several initiatives, undertaken through the Property Renewal Fund, to make Rideau Park a more welcoming place.

Rideau Park Property Renewal Fund: Property renewal expenditures in 2010 totalled \$99,951 leaving a balance of \$4,332 for projects in 2011. The balance includes the bequest from the Betty Green Estate that will be used to help refurbish the Library.

Total contributions and fundraising for the year were \$67,136. 2010 PAR and envelope pledged givings totalled \$42,766. In May, a Property Renewal fundraising letter was sent to the congregation seeking their support for the refurbishment of the Beecroft kitchen. There was a strong response to the letter and \$9,305 was raised and included a number of contributions that were given In Memoriam of loved ones. In addition there were generous \$5,000 and \$6,000 contributions from a member of the UCW and the UCW Furnishings Reserve Account. The annual Lobster Dinner, a RP Café and a fall Roast Beef Dinner were this year's fundraising projects in support of Property Renewal.

Upgrading Beecroft balcony space: The balcony tile ceiling was replaced early in 2010 with an insulated gyprock ceiling. It was surprising to discover no insulation in the ceiling and we have identified for the future the need to insulate the Beecroft Hall and Stage ceilings as an energy conservation measure. The entry door (metal with glass) was changed and the kitchen exhaust vent modified to eliminate the unhelpful 4" riser in the balcony floor. New lighting fixtures were installed. There remains for 2011 the final painting of the walls, adding carpeting, curtains and furniture – chesterfields, chairs and tables. Upon completion of this work this room will be one of the better places to meet in the church for the congregation, its youth and young adults.

Beecroft Kitchen Renewal: The renewal of the Beecroft kitchen in 2010 has been a significant and enjoyable initiative. Congregational input, welcomed discussion and much thinking and re-thinking has brought us a long way from where we started over a year ago with our large yellow kitchen. Using a phased approach we successfully minimized disruption and kept the extent and pace of the changes manageable and focused.

These changes have alleviated congestion at the west entrance door by the dishwasher when the kitchen is used for major events and on Sundays; improved the sightlines in the kitchen; brought more light into Beecroft Hall and provided improved design and space utilization to ensure necessary counter/storage space for optimum kitchen use.

While we have taken a year to get to where we are, everyone seems genuinely pleased with the results. All the changes have contributed positively to a much better functioning kitchen. The wheeled cup and glass storage units are very functional and should help us keep the breakage down. The new fridge and stove were up to the demands of the Tea Room and the fall Roast Beef Dinner. The three new sinks and all the new cupboards and drawers have markedly improved how the kitchen works.

Rideau Park is a busy place and the kitchen is no exception. This has provided some challenges to thread the work of kitchen renewal around the many activities and events. This fall the kitchen has supported the annual Lobster Dinner, the Presbytery Dinner, the preparation of turkey and beef pies, and mini pizzas for the Christmas Treasures Bazaar, the Tea Room, Sunday Coffee for Rideau Park and Emmanuel, Funeral Receptions, and two 90th Birthday celebrations. We also had Election Day, exercise classes and set up time for various events in Beecroft Hall.

In the past few months the work has been paced to match the availability of our resources. Only a few items remain to complete the project including: replacement of the tile floor; addition of work area task lighting; upper cupboards for the south west wall; a roll-down shutter for the pass through and the final painting of the room.

This initiative has allowed us to recognize all the kitchen effort and industry that has gone on through the years to make hospitality a fundamental value at the centre of our Rideau Park church community. We gratefully acknowledge the contribution of the UCW, its members and all its silent partners who have worked tirelessly together in supporting the thousands of events that have been hosted over the years. Thanks be to God.

The year ahead: An update on the 2004-2011 Property Renewal Long Range Plan will be presented in 2011. The 2011 Property Renewal Plan, a report on capital property expenditures, outlines our plans for 2011 and can be found on page 28 of this report.

Other: This year the Stewards worked with staff to help ensure the smooth integration of Emmanuel United Church services and activities into the day to day hustle and bustle of life at Rideau Park. In addition, Stewards worked on a privacy policy and guidelines, guidelines around rental fees and property use, webcasting Sunday services, making improvements to the sound system and the Stewardship campaign.

Acknowledgments: Several congregational members, who are not Stewards, contributed extensive time and talent to the work of the Committee of Stewards, and the Stewards wish to convey their appreciation of these contributions:

Barbara Jeffrey, our Envelope Secretary;

Scott Inrig for providing and sustaining Rideau Park's active Internet web site presence;

Norm Edwards for maintaining the sound system and coordinating its use for worship;

All the Duty Officers, who are coordinated by **Robert Blake**;

The many volunteers who serve on **Weekly Counting Teams**; and

The UCW, which again contributed to the financial health of the congregation and the M&S Fund.

I would also convey the Stewards' ongoing gratitude and appreciation to our church staff. Paul Sorg is our custodian. He maintains the property and assists with setup and take down for many Church activities, making the physical facilities one of our greatest assets for our members and our local community. Debi Brown is our Administrator. She maintains the financial records and looks after the day to day financial transactions, which makes our job as Stewards much easier. Erin O'Neill is the Church Administrative Assistant. Erin helps with preparation of notices and appeals, the Stewardship Campaign, facilities rentals and other needs of Stewards and is a very important member of the Rideau Park team.

Respectfully submitted,
Jeff Allo, Chair

The purpose of United Church Women is to unite all women of the congregation for the total mission of the church and to provide a medium through which they may express their loyalty and devotion to Jesus Christ in Christian witness, study, fellowship and service.

TOTAL MEMBERSHIP:	137		
Active Members:	107	Associate/Inactive Members:	14
Circle Group:	6	Life Memberships:	45
Members at Large	13 primarily from Units 4, 5, 8 and 9		

Life Memberships 2010: Were awarded to: Nancy Begg-Durkee, Marcia Gosse and Marcla Eastwood

In Memoriam: Marion Atwell, Pat Hall, Elena Ross and Cassie Whitteker

2010 Executive:

Honorary Presidents	Rev. Elizabeth Bryce, Keva McKennirey
Past President	Lynda Coombe
President	Barbara Robinson (member of RPUC Council)
Vice President	Vacant
Recording Secretary	Marcla Eastwood
Asst. Recording Secretary	Norine Wolfe
Treasurer	Marcia Gosse*
Archives, Literature and Communication	Kay Irvine
Bazaar Convenors	Jacqueline Newton
Community, Friendship and Visiting	Karin Ott
Finance and Mission	Mabel Bannerman
Flowers	Dorothy Valliant
Membership	Marg Sturley
Nominations	Lynda Coombe
Quilting	Ruth Ebertz
Social Functions	Vacant
Supply and Welfare	Marg McNally
Steward Representative	Mary Harris
Council of Women	Joyce Ireland*
Presbyterial Representative	Ruth Stockley
<i>*not members of UCW</i>	

Unit Leaders

Unit 1	Phyllis Bradt	Unit 6	Grace Shaver
Unit 2	Mabel Bannerman	Unit 7	Janet Dundas and Sandra Weedmark
Unit 3	Ruth Stockley	Unit 10	Jessie Weldon-Gibb
		Circle	Contact Lorna McCrea

Executive Happenings and Responsibilities:

President: Chairs Executive Meetings, (9) and General Meetings (4); organizes UCW Sunday; attended the planning meeting for the World Day of Prayer and participated in the service; attends Council meetings.; co-ordinated the Presbyterial Fellowship Day including luncheon of which we were host; served on a committee which reviewed an application for funding from Rideau Park Foundation; selected guest speakers for general meetings.

General Meetings: At the April general meeting, the Conrad/Shulist family presented Part 2 of their remarkable trip around the world. (Part 1 was enjoyed in November 2009.) At our pot-luck supper in June, our special guest was

Kathleen Stephenson, United Church overseas personnel posted in Brazil. She gave a slide presentation of her work there. In November, Owen Clifton gave an excellent presentation on his mission trip to El Salvador.

Past President: Participates in UCW Sunday and presentation of life membership. Beverly Lee has accepted the position of Vice President for 2011.

Corresponding Secretary: Sent and received cards to and from people concerning sympathy, get well, congratulations, and thank you for flowers, lilies and cards. Sent 18 cards and received 46 expressions of thanks.

Treasurer: Thank you, Marcia.

Convenor Reports:

Archives/Literature/Communications: two new additions to the library – “An Everyday God” by James Taylor and “The Shack” by William Paul Young.

Bazaar: Jacqueline Newton ably convened a very successful Bazaar. It just gets bigger and better every year. A huge thank you to everyone who participated.

Community/Friendship: Karin monitored and welcomed those who were baptized, confirmed or transferring to RPUC. The parents of newly baptized babies receive booklets. The mothers receive the UCW pamphlet and a photo is taken of the proud parents and baby. There were 19 baptisms, 11 girls and 8 boys. Seven young adults joined RPUC through confirmation and adult baptism.

Finance and Mission: The UCW supports 29 local charities and community services. Four dozen cups and four dozen soup bowls were purchased. 40% of year end funds go the Mission and Service and 60% to RPUC Ministries and Program Fund, Additions Christian Blind Mission, Spectrums (autism) and \$100 to Emmanuel United Church re Owen Clifton. Estimated budget - \$26,850.

The UCW are very grateful for the leadership of Brian and Doreen Hamilton in overseeing the renovations to the Beecroft kitchen. There was very little disruption to the many events this fall and the results so far are spectacular. Significant contributions have been made toward the cost by the UCW, \$11,000 plus another \$5,000 donated by a UCW member.

Flowers: At Easter, lilies were distributed. The cost of Sunday flowers has increased to \$80.00. Thank you to those who delivered on Sundays and Easter. Families donated memorial flowers for the sanctuary on 16 occasions. Mabel Bannerman, Mary Harris and Jessie Weldon-Gibb organize the names for recipients of the weekly flowers, lilies and the red poinsettias. Emmanuel United Church donated funds for flowers on the last Sunday in October as a thank you for the use of our church.

Nominations: The 2011 position of Vice President has been accepted by Beverly Lee. Bazaar Co-ordinator vacant.

Quilting: The Quilters contribute greatly to UCW fundraising. They keep busy 50 weeks of the year.

Supply and Welfare: Thank you to the congregation for recycling: 29 pairs of eye glasses for world eye clinics, postage stamps for Canadian Guide Dogs, Campbell's soups labels to buy school supplies, pop can tabs for the Scouts and used greeting cards; 70 pairs of mitts, 40 helmets, 4 scarves, 18 toques, 7 pair of slippers, 1 sweater, 11 pair of socks, 1 set of mitts and toque and 2 baby sets have been knitted. These knitted items now go to Ledbury and Banff Community Centres.

Council of Women: The Council of Women (OCW) is an affiliation of women's organizations whose aims are to identify emerging social problems affecting women and their families and to educate the members about these issues. Issues discussed include: implementation of poverty reduction strategies, homelessness, effects on families and day care programs due to full day kindergarten programs, child welfare issues, services to the aboriginal population in Ottawa, living wage policy for city employees, regulation of retirement homes, insufficient palliative care, limitation in home care business, food and drug safety and threats to CBC funding.

Stewards' Representative: attends all meeting and presents the UCW portion on different matters. We have watched the progress of the Beecroft kitchen renovations with anticipation and satisfaction. FABULOUS!!

Unit Reports: There are 6 units. Each Unit has monthly meetings, usually a program involving films, videos, guest speakers, or a topic for discussion. A time of devotion is also an important part of the meeting.

Unit 1 Makes jams and jellies for the Bazaar.

Unit 2 Hosts the Valentine Coffee Party. Holds the Book Sale. Manages the deli table for the bazaar which entails 7 work parties making turkey and meat pies and pizzas. A special thank you to Steve Shipley and Jim Ebertz who man our pastry press at our work parties. Without this help, we would be unable to continue this very profitable effort.

Unit 3 Holds the 2 Nearly New Sales, spring and fall, plus a penny auction.

Unit 6 Contributes to and manages the Craft Table for the bazaar. Participates in funeral receptions. Some previous Unit 4 members participate in Unit 6.

Unit 7 Prepares baskets for the bazaar and has an Easter bake sale. Hosted the curling banquet.

Unit 10 Manages the Ladies' Boutique at the bazaar and hosted a luncheon for the Harmony Club.

Circle Participates in a monthly book study, reading and discussing N. Graham Standish's book "Paradoxes for Living".

Some of the unit meeting topics included: a film entitled "Luggage", about forgiveness; unit members telling their life stories; "Peace Tree Video"; Islam and Travis Tai Chi; women's health concerns, talk on a member's trip to Machu Pichu.

We are blessed with outstanding people who contribute so generously of their time, energy and talents, to enrich the lives of those of our congregation, staff and the community.

Thank you to the members of the congregation who helped with our major fund raising events. The Book Sale, turkey pie making, Nearly New Sale and last but not least, the bazaar!

The UCW would like to take this opportunity to express our appreciation to Ministers, Rev. Elizabeth Bryce, Rev. Steve Clifton and Rev. Georgina Fitzgerald for their continued support, and thank you to the staff, Debi, Erin and Paul and Lorraine Sorg, for their support and help in so many ways.

Respectfully submitted,
Marcla Eastwood, Recording Secretary

The Christmas Treasures Bazaar was held on Saturday, November 6, 2010 and was a tremendous success. More people from the congregation attended this year, as well as more from Emmanuel and the community. A profit of \$20,843.00 (after expenses) was raised to support many worthy church projects.

Set-up for the Bazaar began on Wednesday, November 3 with Paul Sorg, Brian Hamilton, Steve Shipley and Harold Black assisting to remove all the furniture from church rooms. Bazaar donations were already being dropped off at the Cunningham entrance for distribution to the right areas. Thursday was a busy day with a group of women designing table centrepieces, other women helping with sandwich fillings and great amounts of donations being dropped off requiring careful sorting.

Friday was a very busy day for all bazaar co-ordinators, workers and helpers. A large group of women arrived promptly at 8 a.m. to begin making sandwiches. Others began setting up tables and displaying items for sale. The kitchen began to receive squares for the Tea Room. Beecroft was set up for the Tea Room. Activity and preparation continued till 9 p.m. when the Venturers arrived to provide night security for the church.

Saturday, November 6, started early for all involved at 8 a.m., with women arranging Tea Room plates, kitchen and tea volunteers organizing their duties. At 10 a.m., we welcomed 40+ special guests who were able to shop without the large crowds and enjoy tea and chat with friends.

Weather-wise, it was a reasonable November day with people lined up waiting for the 1 p.m. bell. People literally poured through the door hurrying to their favourite area and buying Tea Room tickets. All areas were busy for the 3 hour allotted time with the Tea Room still serving at 3:30 p.m. with 512 plates served. A few sandwiches still remained, but no squares. The Mini Bazaar was held Sunday with most remaining articles being sold.

Paul Sorg and his family, as always, deserve a special note of thanks for how graciously and efficiently bazaar setup and cleanup is done. Nothing is ever too much trouble for Paul, always remaining in good humour. Paul is there with us to assist with all requests. The 2010 Bazaar set up was eased for Paul with the generous assistance of Steve Shipley, Brian Hamilton and Harold Black. I want to say a special thank you to Harold for all his support of me, without which I would have been in real trouble.

A special thanks, is extended to Marcia Gosse who so pleasantly, ably and efficiently manages the finances.

A recommendation for the 2011 Bazaar:

1. Recruit a "work crew" of 3 able people to assist Paul Sorg on the Wednesday of bazaar week to disassemble the rooms. Also, to recruit a "work crew" of 3 able people to assist Paul to replace all furniture to its rightful place.
2. Bazaar Reports: It will be helpful if a report states how many persons and how many hours to set up prior to bazaar day. How many persons to "staff" the area on bazaar day.

U.C.W. Women retiring: Trudy Bedford (Tea Room table decorations); Kathy Mayes (Tea Room); Francine Auger has offered to accept this position and Carol Shuttleworth (Christmas Decorations). All other areas require confirmation of continuing in their present position.

I wish to say a very sincere thank you to everyone who assisted willingly and generously to make the 2010 bazaar a great success. But then, that's what we at Rideau Park do!!!

We are God's workmanship, created in Christ Jesus to do good works which God prepared in advance for us to do.

Respectfully submitted,
Jacqueline Newton, Bazaar Convenor

The purpose of the annual Fall Stewardship Campaign is to secure Rideau Park's financial needs for the year ahead and to identify the congregation's time and talent commitments. The campaign's 2011 financial objectives were identified from the 2011 Projected Budget established at last year's Annual Meeting.

This year the Fall Stewardship Campaign benefited from the capable and able leadership of Gaveen Cadotte, our Stewardship Campaign Chair. When asked if she could help she responded with a wonderful smile and simply said, "What would you like me to do?" With her 'can do' approach she took up the campaign theme "More Than Enough" and crafted an inspiring introduction to the campaign followed up by an eloquent address to the congregation. The opening paragraph of her 2011 Stewardship Letter demonstrates how blessed we all are under God's wing:

As a family of people living in a community of faith, we are witnesses to a God who gives "more than enough" not only for our own needs but also enough for us to reach out and bless others in our local community and around the world. Each one of us can look back with hearts of thankfulness on times where God had been faithful to us, even in times when our own faith had waned.

Her message recognized the vitality of our church community, the strength of our staff team and the richness of our programs. She called upon us to share our time, talents and financial resources to realize the needs of our community and the United Church of Canada. Her spiritual approach to leadership lifted up our campaign objectives to ensure the spiritual and program success of our church community. The congregation has responded with commitment and enthusiasm to Gaveen's message. On behalf of the congregation, thank you Gaveen for sharing your time, talent and faith journey with us.

Stewardship at Rideau Park calls for a lot of work behind the scenes. Over the years the congregation has responded well to a smooth-running campaign especially when supplemented by a morsel of cake. Each year we are thankful for: the trust and thoughtful support of Reverends Elizabeth Bryce and Steve Clifton; Debi Brown's advice and expertise on the campaign data requirements and the tracking of its progress; Erin O'Neill for keeping us in supplies, recording the Time and Talents and sharing her office, computer, colour printer and photocopier; Chris Inrig and Doreen for making up the stewardship packages; the cake servers who pitched in on short notice; and to Barbara Jeffrey for recording the new pledges in the system.

For 2010 we received 347 pledges from 612 households for a total of \$559,561 which is 3.8% more than last year. Of these, 240 (69%) honour their pledges through preauthorized remittances (PAR) via their banking institutions. We receive \$441,384 (78.8%) of our pledged contributions by PAR. This strong support for givings by PAR ensures our cash flow throughout the year, greatly reduces the work of the counting teams and enables us to keep our monthly Mission and Service contributions to the United Church of Canada current.

The Ministries and Programs Fund received 347 pledges for a total of \$415,706, Mission and Service received 167 pledges for \$97,376, and the Property Renewal Fund received 162 pledges for a total of \$50,501. The Ministries and Programs Fund increased by \$12,830 (3.1%), Mission and Service is up by \$3,491 (3.7%) and Property Renewal increased by \$4,608 (10%). These positive changes reflect progress towards rebuilding the lower pledge base we encountered since 2008 from the passing of some of our members or, in other cases, changed life circumstances.

For 2011, Stewards' budget targets limit expense growth over actual expenses in 2010 to 1.2% (\$7,658). To cover expenses, forecast revenues will have to increase over last year's revenues by 2.3% (\$14,550) or 5% (\$32,150) if we wish to reduce our draw on the Britt and endowment funds. From many years of past experience we know that actual givings exceed the amounts pledged by several percent. This is anticipated in the budget planning for the new year. Anticipated budget revenues for 2011 are 22.5% more than pledged. This gap continues within the upper range of past pledging patterns, and indicates this year will again be challenging; but with considered diligence, full commitment to honour our pledges and generous responses to the direction of our leaders, we can successfully achieve the 2011 budget requirements of \$661,650.

The Memorial Fund began 2010 with a balance of \$2,870. Donations received were \$555. In 2010, \$1,166 was disbursed to purchase plaques for the new chapel stained glass window and to recognize the dedication of the McKennitt Chapel. The year-end balance is \$2,259.

Your faithful and ongoing support of Rideau Park is God's grace at work. We are truly blessed to be part of such a vibrant church community.

Respectfully submitted,
Brian Hamilton, Chair

We had another busy year with full staff. Rideau Park is a large, complex community, always functioning at a high level. Whether adapting to the change created by the loss of some of our beloved congregants or endeavouring to learn and understand God's call and purpose in our lives through Bible study, book studies or group discussions, Rideau Park looks to continued, excellent leadership of our church family. We are very privileged to have three highly educated ministers who so generously share their knowledge through their carefully thought-out sermons, their explanations of Bible passages and their gifts of leading group discussions. We pray that God may inspire more Rideau Park folks to participate in these wonderful opportunities for spiritual growth and lively conversation with Christian friends.

Musically we also had a successful and productive year. The choirs are growing, more young people are participating in voice and bell choirs. Our Music Director has more ideas and vision for the music than there is time to incorporate into the life of our church. Richard's leadership is evident in the expansion of our music program, in the fact that our dedicated lead singers have returned for a second year of high quality performance and in the number of volunteers who have joined in to assist with the various musical groups.

No organization can be successful without dedicated personnel working diligently in the background, ensuring that all the small details are looked after. Rideau Park is very fortunate to have such excellent support in our Administrator, our Administrative Assistant and our Caretaker. You only have to drop into the church a couple of times a week to see how much work is done by these three individuals. They work hard keeping our large, open, busy church running smoothly, sometimes in circumstances that are sensitive and difficult.

So, all our staff are looking after us as if we are their extended family and we are very grateful to them. To ensure that each member of the staff continues to have our respect and support, the Ministry and Personnel Committee prepared and introduced a policy on Harassment and Violence in the Workplace. This policy was required by an Ontario law which was passed in the Ontario Legislature in June 2010. The law requires every employer to have a policy and to ensure that it is known and understood by everyone in the organization. The Ministry and Personnel Committee members presented the policy at the Fall Congregational meeting and to all the committees and groups within the church. A copy of the policy is also posted at the duty officer's desk in Beecroft lobby area. We want to ensure a safe working environment for our staff.

This year our staff also spent time working with the staff of Emmanuel United, helping them adjust to many months without a home base while their large renovation project was planned and started. I'm sure the welcome and support our staff offered Emmanuel make this period easier for them to go through.

Pastoral Care visits, services at senior facilities, Bible studies, book studies, Lenten study sessions, church services, memorial services, social action and outreach, retreats, one-on-one counseling, music concerts, rehearsals, co-ordinating room use, preparing numerous reports, answering numerous and varied questions, keeping the property safe and in good working order, these are just a few of the many responsibilities our personnel carry out on our behalf.

The Ministry and Personnel Committee consists of representatives for each staff person. The members are Alyce Dunnewold, Marjorie Melick, Hyacinthe Wade, Jim Holton, Mike Presley and Bas Groeneweg. Thanks to each of them for their participation and involvement over the year.

Respectfully submitted,
Doreen Hamilton, Chair

In 2010, the Administrator and the Chair of the Administrative Committee worked together on a project initiated by the Communications Task Force to improve communications within the congregation. As a result, monthly emails are being sent from the church Administrator to those members of/adherents to RPUC who wish to be kept updated as efficiently as possible on RPUC activities and news. As usual, the Administrator and the Administrative Assistant demonstrated cheerful practicality and great efficiency.

Respectfully submitted,
Nancy McPherson, Chair

The Nominating Sub-committee is presently a Sub-committee of the Volunteer Resources Committee. The objective of the Sub-committee is to ensure that all vacancies on Council, Session, the Committee of Stewards, Trustees, and Presbytery Representatives are filled each year. In addition, the Sub-committee is responsible for recommending appointments for the position of Chair for each of the Sub-committees of Session and the Committee of Stewards. The Nominating Sub-committee consulted both the Ministerial staff and the Council Chair concerning the church's needs for 2011. As of December 1, 2010, the Sub-committee has been able to fill all the vacant positions except for the Chair of Volunteer Resources.

Summary of Nominations

Vacancies on Council for 2011 include Vice-chair of Council and Secretary of Council. Candidates have been identified for these positions and they are indicated on the full list below.

This year, 29 Elders were due to finish serving their terms as members of Session. Twenty-three of these agreed to extend their terms and 8 new members were recruited as Elders. Their names can be found in the attached table under the title **Members of Session**. Six Elders have decided not to renew their terms and one Elder, Marion Atwell, passed away in August. Session currently has 57 members for 2011 including three Elders who would be assuming phone list duties only. Many Rideau Parkers have embraced new technologies and have chosen to be contacted via email for informational purposes. This has resulted in smaller district lists in many cases.

The Committee of Stewards only needed one new member this year. The attached table includes the **Members of the Committee of Stewards**.

Recommendations:

As indicated in the attached table, the Congregation's approval is requested for:

1. the appointments to Council;
2. the extension of terms of office for Elders and Stewards;
3. the slate of new Elders and Stewards; and
4. the appointment of new Chairs of Committees as well as an extension of terms for some Chairs of Committees.

The Sub-committee would like to take this opportunity to thank all those who are finishing their terms this year for their tireless dedication and service to the church.

I would like to express my sincere thanks to all the members of the Nominating Sub-committee: Wayne Bond, Mary Lynne Holton, Marilyn Law, Jacqueline Newton, Drew Presley, Steve Shipley, and Ministers Steve Clifton and Elizabeth Bryce for their support and dedication to achieving our objectives. The Sub-committee would also like to sincerely thank all those who have agreed to contribute their time and talents to the life and work of Rideau Park United Church. We finished our work pretty quickly this year and were encouraged that members new to Rideau Park were willing to take on new challenges and responsibilities.

Respectfully submitted,
Shanti Inman, Chair

Nominating Committee Report

The following pages list the appointments (both proposed and existing) to Council, Session, the Committee of Stewards, Trustees, Presbytery Representatives and the Chairs of all Committees with the terms of office that they have agreed to serve. For clarification, the year in parentheses after each name indicates that the person will serve in the position until February of that year (that is, until the congregational meeting in February).

An asterisk (*) indicates new appointments to the positions indicated. A double asterisk (**) indicates extension of term.

COUNCIL MEMBERSHIP

- The Chair and Vice-chair are elected for two-year terms.
- All other Council members are elected for three-year terms, except as indicated.
- The Ministers and Church Administrator are ex-officio, non voting members.

COUNCIL CHAIR	Wayne Bond*	(2013)
COUNCIL VICE CHAIR	Mary Lynne Holton*	(2013)
COUNCIL SECRETARY	Lisa Sadler*	(2014)
CHAIR OF SESSION	Doug Robinson	(2013)
SESSION REPRESENTATIVES	Cameron Jeffrey**	(2013)
	Karen Humphries	(2013)
CHAIR OF STEWARDS	Jeff Allo	(2012)
STEWARDS REPRESENTATIVES	Bob Roden	(2012)
	Tony Bernard**	(2012)
CHAIR OF STEWARDSHIP	Brian Hamilton	(2012)
CHAIR OF MINISTRY AND PERSONNEL COMMITTEE	Doreen Hamilton	(2012)
OTTAWA PRESBYTERY REPRESENTATIVE	Karen Lamb	(2012)
CHAIR OF BOARD OF TRUSTEES	Gavin Currie	(2013)
PRESIDENT OF UNITED CHURCH WOMEN	Barbara Robinson	(2012)
CHAIR OF ADMINISTRATIVE COMMITTEE	Nancy McPherson**	(2012)
MEMBERS AT LARGE	Sandra Weedmark	(2012)
	Greig Scott	(2013)

Members retiring: Marilyn Law (Council Chair), Steve Shipley (Council Secretary)

STANDING COMMITTEES:

SESSION: CHAIR	Doug Robinson	(2013)
CLERK OF SESSION	Brian Neal	(2014)
ELDERS: See Members of Session section		
<i>Retiring as Clerk of Session: Karen Lamb</i>		

STEWARDS: CHAIR	Jeff Allo	(2012)
TREASURER	Bob Roden	(2012)
STEWARDS: See Members of Stewards section		

CHAIRS OF COMMITTEES:

MINISTRY AND PERSONNEL	Doreen Hamilton	(2012)
ADMINISTRATIVE	Nancy McPherson**	(2012)
STEWARDSHIP	Brian Hamilton	(2012)
SOCIAL ACTION AND OUTREACH	Sandra Weedmark	(2012)
WORSHIP AND MUSIC (Co-chairs)	Patricia Whitridge**	(2012)
	Shailja Verma	(2013)
PASTORAL CARE	Alyce Dunnewold	(2013)
NOMINATIONS	Shanti Inman**	(2012)
CHRISTIAN DEVELOPMENT	Elizabeth Acquaah*	(2014)

Chair retiring: Drew Presley (Christian Development)

TRUSTEES:

CHAIR	Gavin Currie		
VICE-CHAIR	Vacant		
SECRETARY	Daryl Lindberg		
MEMBERS:	Ed Boothe	Norm Edwards	Bob Elliott
	Murray Ferguson	Bas Groeneweg	Keith Harris
	Les MacLauchlan	Jacqueline Newton	

PRESBYTERY REPRESENTATIVES:

Chris Inrig	Brian Irvine
Karen Lamb	Don Melick

MEMBERS OF THE COMMITTEE OF STEWARDS:

Jeff Allo	(2012)	Brian Hamilton	(2012)
Wayne Bennett	(2012)	Andrew Jeffrey	(2012)
Tony Bernard**	(2012)	Bill Ott**	(2014)
Gaveen Cadotte	(2012)	Bob Roden	(2012)
John Durkee**	(2012)	John Scollick**	(2012)
Donald Ford**	(2012)	Nadia Senyk	(2012)
Rod Hagglund**	(2014)	Steve Shipley*	(2014)

Steward retiring: Michael Inrig

MEMBERS OF SESSION:

Melanie Achtenberg*	(2014)	Heather Bennett	(2013)
Elizabeth Acquaah	(2013)	Sharon Bernard	(2013)
Malcolm Bayne**	(2012)	Wayne Bond*	(2014)
Graeme Beattie	(2013)	Janet Buske-Wichser**	(2013)
Lynda Becker	(2012)	Gavin Currie	(2013)
Nancy Begg-Durkee**	(2014)	Helen Cutts*	(2014)
Myrna Belo	(2013)	Dieudonné Detchou	(2012)

Janet Dundas	(2012)	Christy Harris*	(2014)
Bas Groeneweg**	(2014)	Margaret Hart	(2013)
Doreen Hamilton	(2012)	Jim Holton	(2012)
Janette Hamilton-Silcoff**	(2014)	Mary Lynne Holton	(2012)
Don Harper**	(2014)	Karen Humphries	(2012)
Lois Harper	(2013)	Heather Ingrams**	(2012)
Shanti Inman**	(2012)	Elaine Robertson**	(2014)
Chris Inrig**	(2013)	Doug Robinson**	(2013)
Joyce Ireland**	(2012)	Gary Seymour	(2012)
Cameron Jeffrey	(2013)	Steve Shipley**	(2014)
Susan Klimowicz**	(2012)	Muriel Spratt*	(2014)
Christel Kurz	(2012)	Maureen Stark*	(2014)
Karen Lamb	(2012)	Ken Sturley	(2013)
Marilyn Law	(2012)	Bill Totten*	(2014)
Ron Little	(2013)	Dorothy Valliant**	(2012)
Kathy Mayes**	(2012)	Susan Vaughan**	(2014)
Nancy McPherson	(2012)	Hyacinthe Wade**	(2012)
Don Melick**	(2014)	Sandra Weedmark**	(2012)
Brian Neal	(2014)	Jessie Weldon-Gibb**	(2012)
Jacqueline Newton**	(2014)	Kate Whitridge	(2013)
Drew Presley**	(2014)	Chris/Joanne Winckel *	(2014)
Doug Robertson**	(2014)		

Elders retiring: Barbara Derby, Cathy Hollands, Katharine Kelly, Ellen Law, Geraldine Palmer, Ruth Scobie

The year 2010 was again a year of exploration for the Worship and Music committee. We held four open meetings where all interested members and adherents of the congregation were invited to attend, to allow us to receive as much input from the congregation as possible. The meetings are open, promoting wide-ranging discussions on quite diverse topics relating to worship and music. This year we did begin to set formal agendas and to produce minutes of the meetings. As well, attention was focused on the process of setting, approving and spending our budget and the committee came to a new understanding of how this should be governed.

A review of fees for different activities taking place in the Sanctuary and Chapel was undertaken and draft guidelines were developed and will be finalized in the coming year. Fees for very small weddings were also discussed and modifications to the existing documentation on wedding fees were made as a result.

Starting in the fall of 2010, we shared our worship space with Emmanuel United Church as their facility began extensive renovations. While at times this has presented some challenges, we have been able to resolve all issues, including sharing our Christmas Eve services quite effectively.

In 2010, the children's music program continued with three singing choirs: Cherubs, Joyful Noise and Jubilation and one chimes group: Noteable Sound. In September 2010, changes were made to the children's bell/chime choirs: a new teen bell group was formed called Grace Notes under the direction of Andrea Laliberté. The adult bell groups Touch of Brass and La Bell Ensemble continued their work, and a new group for novice ringers called Ringing Praise was formed. The committee also oversaw the ongoing work of our Chancel Choir.

This year, we experimented with different initiatives to encourage young adults to participate in our services. The Encarna initiative from 2009 was continued during Advent 2010. As well, on Youth and Young Adult Sunday, a contemporary service took place with music led by JAM, Emmanuel United Church's youth band. The service included drama, a projected video meditation, and slam poetry, all led by the members of Youth Bible Study. As well, a group of United Church Young Adults, representing seven local congregations including Rideau Park, presented a worship drama in Advent called Project 507. This midweek service told the story of the United Church Street Outreach Center, Centre 507, through music and drama and the service was very well attended.

A number of special programs take place annually: the Dianne Ferguson Honorary concert, Lenten mid-week services, Holy Week services, Bells in Spring concert, summer mid-week services, Advent mid-week services, Christmas Bell Concert, Christmas Choir Concert and Christmas Eve Services. In 2010, Rideau Park held a Spring Festival that celebrated our gifts of the Spirit, involving a congregational art show, a concert, and Celtic worship. Two special Sunday services were held on a theme of "A New Creation", one with leadership from the Spirituality group. We also included a spaghetti dinner with a talent show featuring our young people.

We would like to offer our special thanks to all who enrich our worship in so many different ways, including our coffee organizers, head ushers, decorators...and particularly Marcia Gosse, Andrea Laliberté, Nadine Dawson, Gretchen Conrad, Heather Ingrams, Barbara Jeffrey and Patricia Whitridge for their dedication to the roles they have accepted in the music programs.

Respectfully submitted,
Shailja Verma and Patricia Whitridge, Co-chairs

Bells! Bells! Bells!

A'Pealing Sound (ages 12 to 16) with 6 teen members enjoyed performances from January to May at the Perley-Rideau Vets home, Lynwood Park Lodge and Rideau Park for Palm Sunday and the Spring Bell Concert, etc. In September, leadership of this group was passed to Andrea Laliberté, and all children/youth programs for bells and chimes are now consolidated on Thursday evenings.

A Touch of Brass is an adult Bell group with 14 dedicated members who are willing to give of themselves and perform at Rideau Park as well as various churches in the community. Practices are on Monday evenings and performance highlights include the Hunt Club Manor, Gloucester Presbyterian Church, Perley-Rideau Vets home, Pat Hall's Memorial Service, an Inter-Faith Service at the synagogue, UCW Christmas General Meeting, Colonel By Retirement Residence, Rehabilitation Centre, Christmas Concert with the Chancel Choir, Spring Bell Concert and "Ringing in Christmas" bell concert as well as several services at Rideau Park throughout the year.

La Bell Ensemble is an adult Bell group with 11 members, who practice on Tuesday evenings and perform in various venues around the community. Some of the highlights included the Spring Bell Concert, Perley-Rideau Vets home, Lynwood Park Lodge, a memorial service, a benefit concert for the Marco Depestre Foundation in Haiti, St. Stephen's Presbyterian Church, Central Park Lodge, Bridlewood Trails Retirement Home, St. Timothy's Presbyterian Church concert for the Food Bank, Hunt Club Manor, and "Ringing in Christmas" bell concert as well as a service at Rideau Park.

In September, a new adult bell group had its beginning, giving interested individuals a chance to learn to play bells in a no-pressure setting. Currently **Ringing Praise** has 9 members and had its debut at the "Ringing in Christmas" bell concert. This group is looking forward to new challenges in the new year.

2010 has been a busy year for bell performances - May God bless the bell ringers who have given freely of their time to share their gift of music with so many others – THANK YOU!

If you are interested in becoming a bell ringer (and can read music), please call Marcia Gosse at 613-731-2281.

Respectfully submitted,
Marcia Gosse

At the beginning of 2010, there were two Chimes choirs active at Rideau Park United Church. Note-Able Sound had 12 members in grades 2-7, and met from 7:15 – 7:45 p.m. each Thursday in Brackenridge Hall. The group was directed by Andrea Laliberté with assistance from Erin Brunet, Merina Shulist and members of our senior Chimes choir. Grace Notes Chimes group had 16 members grades 8+ and met from 7:45 – 8:15 p.m. each Thursday in Brackenridge Hall. The group was also directed by Andrea Laliberté with the capable aid of both Erin Brunet and Merina Shulist. In the Spring of 2010, both Note-Able Sound and Grace Notes shared their music in worship at Rideau Park on several occasions and participated in the annual spring Bell concert.

At the conclusion of the season, it was decided that Grace Notes Chimes choir would merge with the Tuesday evening Teen bell choir (A'Pealing Sound) and that the combined choir would meet on Thursday evenings as part of the children's music program night (in the Grace Notes time slot). It was also decided that Andrea Laliberté would take over directing the teen Bells from Marcia Gosse.

Over the summer, changes were made to the scheduling of all children's music programming for the fall of 2010. As a result, Note-Able Sound now meets from 6:30 – 7:00 p.m. each Thursday in Brackenridge Hall. Grace Notes Teen Bells now meets from 7:00 – 7:45 p.m. each Thursday in Brackenridge Hall. Both groups are directed by Andrea Laliberté with assistance from Erin Brunet, Merina Shulist and Pat Whitridge.

In the fall of 2010, both groups enjoyed a large enrolment. Note-Able Sound had 17 members in grades 2-6, many of whom joined the group as new ringers. Several members of Grace Notes also helped with the group. Note-Able Sound shared their music as part of the Christmas Bell concert, as part of Sunday worship and at the 6:30 p.m. Christmas Eve family service. Grace Notes started the fall of 2010 also with 17 members, all grades 7-12. Grace Notes shared their music at the Christmas Bell Concert, the annual Christmas Pageant and at the 6:30 p.m. Christmas Eve family service.

For more information, or to register for one of our Chimes groups, please contact Andrea Laliberté at 248-1283 or marcandrea@rogers.com.

Respectfully submitted,
Andrea Laliberté

Membership: Elizabeth Acquaah, Rev. Steve Clifton, Ruth Cooper, Dieudonné Detchou, Janet DiFrancesco, Bas Groeneweg, Andrea Laliberté, Drew Presley, and Anne Marie Tessier.

The mandate of the Christian Development Committee is to take the lead in planning and developing programs and events to promote Christian development for people of all ages in the congregation. The following is a list of both ongoing programs, as well as annual events that the committee oversees:

Programs

Sunday school
Sunday Evening Bible Study
Adult Bible Study Groups
Lenten Book Study
Adult Retreats
Confirmation Classes
Vacation Bible School
Hear Say Supper Group
Scouting Programs
Shoe Boxes for Harmony House Campaign
Sunday School Children's Cards for Charity

Events

The Carol Gardner Awards
Congregational Picnic
Carleton University Pause Table
Advent Happening
Pageant Reception

As one can see from the lists above, the CD committee is a very busy committee. Fortunately, many of these programs "seem" to run themselves because of the wonderful volunteers and of course the great work of our staff person, Steve Clifton.

With the help of many wonderful volunteers, we continue to provide a vibrant Sunday school program. We are privileged to have approximately 25 teachers and helpers, and an average of 50 students in our Sunday school. Rideau Park is blessed to have many talented people contribute to our Sunday school program, and it continues to be an attractive feature of our church.

Recently we started the Carol Gardner Awards as a means of honouring outstanding contributions to our Sunday school. Last year's recipient was Sharon Bernard, who has been envelope secretary for many, many years. She goes about her work very quietly, behind the scenes, doing one of the necessary jobs that keep our program running along.

We would like to especially thank Paul Sorg, who continues to have Sunday school rooms ready on Sunday mornings – even after numerous changes to our set up, and an even busier schedule.

It has now been three years that our Vacation Bible School program (VBS) has been offered as a full day program and has been led by the youth of Ottawa Presbytery. The program had approximately 50 children, and remained as successful as past years. The option of a full day camp appealed to many working families. As well, there continues to be both the need and desire to have volunteers from Rideau Park's own youth make a contribution to the program.

This year we decided to look outside the committee to the larger congregation in order to fill a couple of Event Shepherd roles. We were very pleased to have Gretchen Conrad and Mark Shulist head up the Shoe Boxes for Harmony House campaign, with another newcomer, Tracey Duncan, also offering to help. As well, we were very pleased to have Tara Lockhart agree to run our annual Advent Happening Event, which went very well.

We also want to mention the wonderful contributions of Janine Ewing Dolbec, who was in her seventh year of running the Children's Cards for Charity Project, and Tamara Boisvert, who for the third straight year took the lead in organizing the reception for our Christmas Pageant performers.

The committee still faces the challenge of keeping bulletin boards up to date, and would welcome someone coming forward to lead that initiative. We would also very much like someone to step forward to become the Event Shepherd for the Annual Congregational picnic.

We were very pleased to have Andrea Laliberté join the committee this past year. Andrea is already a well known contributor to Rideau Park, having led the children in the Annual Christmas Pageant, as well as teaching Sunday school – to name just a couple of her contributions. We welcome her drive and creativity, and we know she will be a valuable asset to the committee.

It has been my pleasure to be Chair of the committee for the past four years. I leave the Chair in the capable hands of Elizabeth Acquaah, and I want to thank all the committee members for their support and hard work. I invite more of you to join us because truly "many hands make light work" and you really do "get out what you put in".

Respectfully submitted,
Drew Presley, Chair

High School age youth meet every Sunday night in the Church Parlour for Youth Bible Study (YBS). In the first part of 2010, YBS merged with our confirmation program and explored the basics of the Christian faith using the resource: Jesus 24/7. This fall YBS began a study of the Book of Judges which is filled with memorable stories and characters. Leadership of this group is shared by Steve Clifton, Gaveen Cadotte and Scott Inrig. This group is fun to work with!

On Sunday mornings our 12 and 13 year olds meet for class. Owen Clifton, Chloée Detchou and Merina Shulist took over the class through the spring of 2010. In the fall, Katherine Clifton took her brother's place on the teaching team.

In the Parlour on Sunday mornings, grade 9's are led through a year long survey of the Bible, from Genesis to Revelation. Amy Neal is the group leader. This group leaves the most interesting biblical and theological diagrams on the Parlour white board. A new initiative this year, born of an idea from Andrea Laliberté, is the youth knitting group. Andrea and Anne Blades introduced 7 young women to the art of knitting prayer shawls; you now can see a group of teens sharing a pew and knitting together on Sunday mornings.

Rideau Park volunteers at the Carleton University Ecumenical Chaplaincy Pause Table in April and December, providing free food and friendly smiles to students during their exams. More than 700 students stop by the Pause Table in the spring and again in the winter exam period; the generosity of those who give food or time is really appreciated by the students.

Thanks to the Presbytery youth and Young Adults Ministries program, there are opportunities for our young people to be involved in Presbytery YAYA events. Young Adults are invited to gather on the last Sunday evening of each month for a meal at an event called the Open Table (www.theopentable.ca) at All Saints church in Sandy Hill; this is a joint Anglican/Lutheran/Presbyterian/United Church venture. Twice each year, youth are invited to gather for *the Point*, a worship event for teenagers in the Ottawa Presbytery. Some of our youth have helped to lead and plan *the Point*; more than 100 young people attend the gatherings. The February Point has now morphed into *Worshiplude*; youth from all over Quebec and Ontario come to Ottawa for *Winterlude*, are hosted by local churches and join in with the Point worship gathering. Also, our Presbytery runs the Camp Awesome VBS program and several of our young people are involved in leading the program.

Our congregation is blessed with great young people who contribute much to our church's life. Youth make our annual VBS possible with their enthusiastic leadership. A number of our youth and young adults serve as Sunday School teachers through the Sunday School year. Projects like Advent Happening, the Church Picnic, Christmas Cheer and the Christmas Pageant engage our youth in the work of our congregation. They share musical gifts through Jubilation and Note-able Sound. Our youth bless us with their gifts in many ways.

And we are grateful for all those who work with the youth of our congregation.

Respectfully submitted,
Rev. Steve Clifton

The Pastoral Care Committee continued to coordinate the visiting of those in our church community who are no longer able to attend church events and functions. On behalf of the congregation, it sent condolences to recently bereaved members of the church community. It also sponsored, and organized the reception for the annual "Our Hearts Remember" service, a service where we remember loved ones who live on in our hearts.

This past year, the Pastoral Care Committee was able to sponsor five support sessions for bereaved people. It was also able to support basic pastoral care training for two members of the Committee.

It is my privilege as Chair to serve alongside a group of highly dedicated people who faithfully visit and communicate with members of our church community whose presence in it is no longer a very visible one. Most of these volunteers have been providing this pastoral service for many, many years. On behalf of the congregation, I thank them for this vital role they perform in keeping our community bonds strong.

Respectfully submitted,
Alyce Dunnewold, Chair

The members of Social Action and Outreach are a dedicated and committed group. The Committee organizes programs/events/space for: tenants in low-income housing; Christmas Hampers; Heron Emergency Food Bank; for seniors; for children and their care givers; and Alcoholics Anonymous.

Christmas Cheer – Carolyn Scollick

Once again Jane Stott was our Christmas Cheer Coordinator, and the congregation responded generously, financially and by volunteering their time. We were able to provide 75 hampers as well as 75 gift cards to families in our area. Wilson's Independent Grocery store provided all food and gift cards with a generous discount.

Peace and Development – Marilyn Law

Once again the Peace and Development Committee arranged Black History Sunday in January with Adrian Harewood as our guest speaker and the Voices of Praise choir. We also arranged for Minutes of Mission one Sunday a month and as well brought to the congregation current items of social interest by way of the bulletin. We also had a Saturday morning event, with a Sikh speaker, which proved quite interesting.

Heron Emergency Food Centre – Frances Dawson

Sixty volunteers put in over 3,000 hours making it possible to serve 13,000 plus people in 2010. Harold Black does a significant amount of the shopping and Kathy Mayes works on site once a week. As well, they both serve on the board.

Blair Court Community House – Frances Dawson

Blair Court responds to over 700 (not including summer programs) requests for services and programming in an average month. This year RPUC, through the Foundation for Ministry, has made possible a distance-learning program through the Independent Learning Centre so members of the community can work toward their high school diplomas. Nadia Senyk and Frances Dawson are doing their best to replace Alice Campbell.

Thursday Euchre Club – Steve Shipley

This is a group of people who meet here at Rideau Park from September to June. They gather each Thursday afternoon from 1:00 to 3:00 p.m. to laugh, talk, and enjoy some light refreshments and oh yes, play a game or two of Euchre. The door is always open for new members to come in and pull up a chair.

Multi-Faith Housing Initiative (MHI) – Don Melick

This activity continues to receive widespread attention and support from many faith groups across Ottawa. The Rideau Park Foundation continued its substantial loan support through 2010. It is anticipated that the new Province of Ontario affordable housing program, announced on November 29, 2010, will provide MHI the opportunity to increase the number of affordable housing units provided (currently at 42) within the next few months.

Banff Avenue Community House – Bas Groeneweg

The Banff Avenue Community House offers a variety of services and activities to residents of the Ridgemont Terrace area in partnership with community agencies.

Group for Friends - Bill and Anne McMillan

This is both a fun and a support group for physically or mentally challenged people aged 18 to 40. It meets at Rideau Park for events such as dances and movie/pizza nights.

Alcoholics Anonymous - by a member of the Oasis Group of AA and Rideau Park United Church.

The Oasis Group of Alcoholics Anonymous has been meeting at Rideau Park downstairs in Brackenridge Hall every Monday night at 8:00 p.m. for over 30 years, including most holiday Mondays. The Oasis AA meeting is an open speaker meeting which means that anyone can attend, whether alcoholic or not and just sit and listen. Most people know at least one person who may have a drinking problem and over the years, Oasis has seen a few members of RPUC and many, many others from all walks of life come and check us out. And of course, we do have a tradition of anonymity so whether you are coming for a friend or relative or for yourself, you can rest assured we won't be announcing your presence to anyone outside the meeting. This is the AA preamble that is read at the opening of most AA meetings;

ALCOHOLIC ANONYMOUS is a fellowship of men and women who share their experience, strength and hope with each other that they may solve their common problem and help others to recover from alcoholism. The only requirement for membership is a desire to stop drinking. There are no dues or fees for A.A. membership; we are self-supporting through our own contributions. A.A. is not allied with any sect, denomination, politics, organization or institution; does not wish to engage in any controversy; neither endorses nor opposes any causes. Our primary purpose is to stay sober and help other alcoholics to achieve sobriety. Reprinted with permission of The A.A. Grapevine, Inc.

Even though the two founders were Christians and the 12 steps of recovery were based on the four original absolute standards of love, purity, honesty and unselfishness practised by the Oxford Group, an evangelical Christian movement, and then expanded and tailored for alcoholics, AA is actually a spiritual, not a religious program, which has made room for people of all races and faiths, agnostics and atheists, gays and lesbians, and many cultures and languages. The 12 traditions of AA are spiritual principles that have allowed AA to survive and flourish around the world for over 75 years. To find out more, do come and visit us on Monday nights at 8:00 p.m., or choose another Ottawa meeting from the Ottawa Area Intergroup website at www.Ottawaaa.org. You can also go to the main AA World Services website in New York to learn more about AA and to find meetings all over the world: www.aa.org. In large international cities such as Paris, Rome, Cairo, Kyiv, Moscow, etc. there are English-speaking meetings as well as meetings in the local language. As one of our public service commercials says: If you want to drink, that's your business. If you want to stop, that's our business. We can help. Welcome! For more information call 613-237-6000.

50+ fitness - A group of seniors meet every Tuesday and Thursday morning to exercise at eight week intervals.

Harmony Club - The group meets on the last Wednesday of each month from 10:30 a.m. to 2:00 pm. (excepting June, July and August). Cards and conversation precede a lunch made by volunteers, followed by an interesting program with a guest speaker or music. In 2010, a new bridge group was formed. The club had a very successful year, with approximately 45 members and an average monthly attendance of 25 to 30.

Group Moms, Pops and Tots - Children and their parents use the large Sunday School room for a variety of activities for small children and their caregiver parent. They meet on Monday and Thursday mornings.

Wednesday Morning Children's Group - Pre-school age children meet with their and parents/caregiver for children's activities and socializing.

Sunday Fun – Banff Ave - This small group remains active under the capable leadership of Margaret Walsh.

Rideau Park Curling Club - A group of men and women from the congregation meet regularly at the RA Centre to enjoy a game of curling, and new members are always welcome, no experience is necessary.

Respectfully submitted,
Sandra Weedmark, Chair