

Rideau Park United Church 2009 Annual Report

2203 Alta Vista Drive ♦ Ottawa ♦ Ontario ♦ K1H 7L9

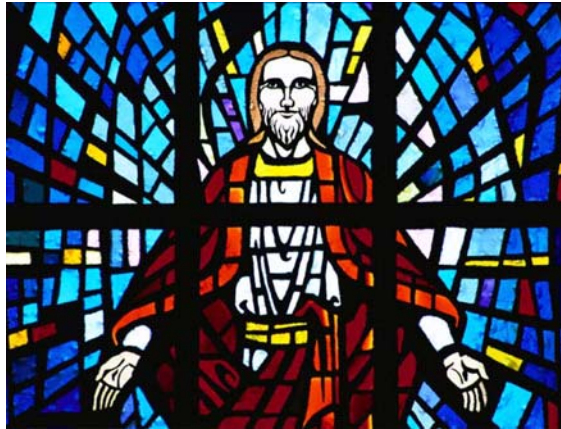
613-733-3156 ♦ rideaupark.ca



*In Christian community we rejoice with the joyful, cry with the sorrowing,
and live each moment with Christ in our hearts... and God moves in
and through us all, weaving our lives together in a beautiful spiritual mosaic.*

B. Heysel

In Memoriam



Members, Adherents and Friends of Rideau Park

Ralph Frederick McDonald

Nancy (Dorothy Anne) Van Giezen

Lewis Neville Drewry Little

Orville Hancock

Roy McGregor Watt

Bruce Renton

Margaret Kett

Martin Ross Gilmore

Patricia Eleanor Horne

Margaret Rogers

Joy Valentine Rae

Elizabeth Edwards

Marion McDowell

Jessie Jackson

Denvil Brown

James Fydell

Betty Green

Nancy Armstrong

Pierre Maynard

John Guy Mitchell

Patricia Johnson

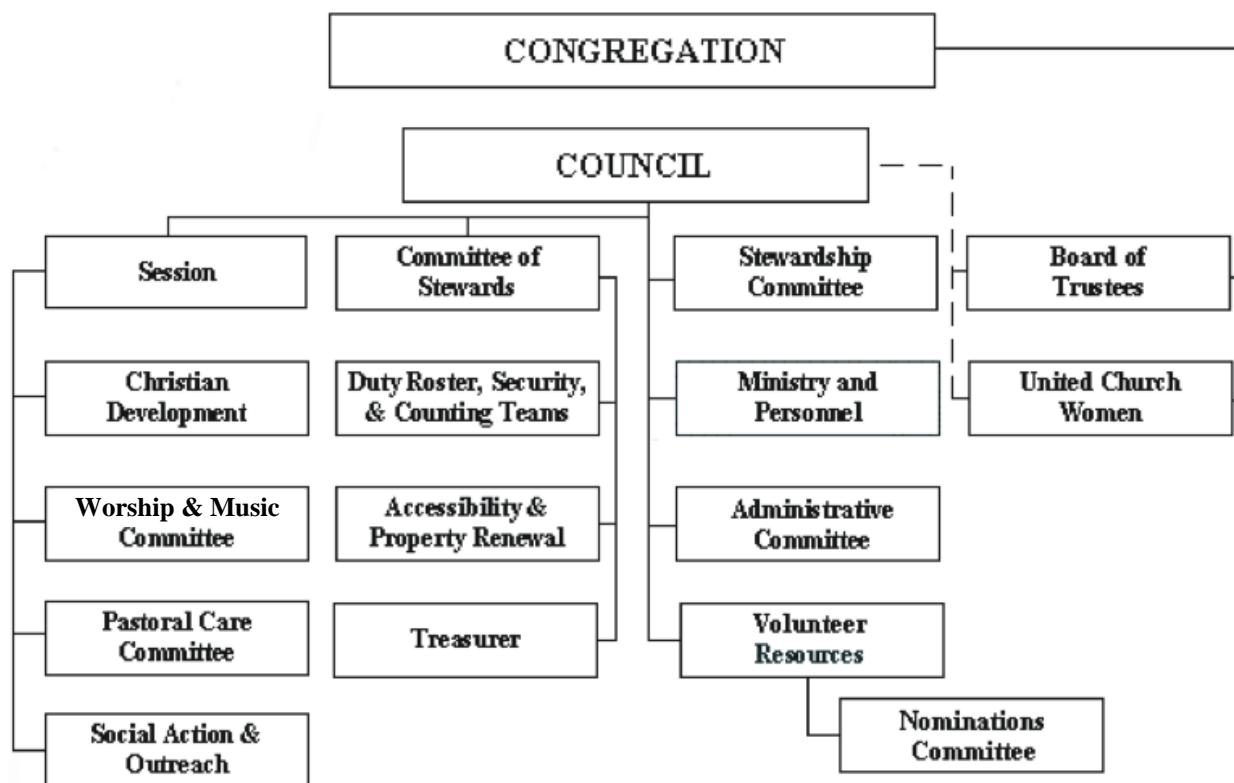
Cassie Whitteker

Robert Bailey

I am the resurrection and the life. Those who believe in me, even though they die, will live, and everyone who lives and believes in me will never die.

John 11:25, 26

MINISTER EMERITUS	Rev. Dr. Ott McKennitt	
STAFF	Rev. Steve Clifton Rev. Elizabeth Bryce Rev. Georgina Fitzgerald Richard Glasser Jane Stott Debi Brown Erin O'Neill Paul Sorg	Minister of Christian Family and Worship Minister of Community and Worship Minister of Pastoral Care Director of Music Christmas Cheer Co-ord. (Oct-Dec) Administrator Administrative Assistant Sexton
COUNCIL	Marilyn Law Wayne Bond Steve Shipley Katharine Kelly Doug Robinson Cameron Jeffrey Jeff Allo Bob Roden Tony Bernard Brian Hamilton Doreen Hamilton Karen Lamb Judy Paré Barbara Robinson Nancy McPherson Sandra Weedmark John DiFrancesco	Chair Vice-chair Secretary Chair of Session Session Representative Session Representative Chair of Stewards Stewards' Representative, Treasurer Stewards' Representative Chair of Stewardship Committee Chair of Ministry and Personnel Committee Ottawa Presbytery Representative Chair of Board of Trustees President of United Church Women Chair of Administrative Committee Member at large Member at large
	COMMITTEES	
SESSION	Katharine Kelly Karen Lamb	Chair Clerk
Sub-committees of Session		
Christian Development	Drew Presley	Chair
Music and Worship	Kristie Marr & Patricia Whitridge	Co-chairs
Social Action and Outreach	Bas Groeneweg	Chair
Pastoral Care	Judy Paré	Chair
STEWARDS	Jeff Allo	Chair
Sub-committees of Stewards		
Treasurer	Bob Roden	
Property	Rod Hagglund	Chair
Counting Teams	Andrew Jeffrey	
STEWARDSHIP	Brian Hamilton	Chair
VOLUNTEER RESOURCES	Vacant	Chair
Nominating Sub-committee	Shanti Inman	Chair
MINISTRY & PERSONNEL	Doreen Hamilton	Chair
ADMINISTRATIVE	Nancy McPherson	Chair
BOARD OF TRUSTEES	Judy Paré	Chair
UNITED CHURCH WOMEN	Barbara Robinson	President
PRESBYTERY REPRESENTATIVES	Brian Irvine Don Melick	Karen Lamb Chris Inrig
ENVELOPE SECRETARY	Barbara Jeffrey	



Number of households as of Dec. 31, 2009	736
Total number of persons as of Dec. 31, 2009	1700
Members received through Transfer of Certificate	3
Members removed through Transfer of Certificate.....	2
Persons removed by death	17
Number of weddings	9
Number of funerals	23

Baptisms

Winston John Kevin Walsh

Liliana Grace Adeola Belo

Grace Audrey Mona Lockhart

Lily Hazel Lamoureux

William McGregor Faure

Aislinn Gwedolyn Hawkins

Sydney Kristina Laliberté

Hudson David Hawkins

Eli Meredith Lincoln

Confirmation

Amy Neal

Transfers to Rideau Park

Jean Matheson
William MacLeod

Graeme Beattie

Transfers from Rideau Park

Barbara Hodgins

Garry Sullivan

Rideau Park United Church is a family of people who joyfully proclaim a loving God as revealed in Jesus Christ.

As caring members of this church, we seek to do this by:

- ✝ joining together in worship, prayer and music;*
- ✝ reading and studying the Bible;*
- ✝ living a Christian life;*
- ✝ nurturing both young and old in Christian education programmes;*
- ✝ seeking justice for everyone; and*
- ✝ continually sharing our faith, hope, talents and resources with our community, country and the world.*

Maisie Archibold

Bob Bailey

Ed Becker

Peggy Call

Roy Dohoo

Elizabeth Edwards

Jim Fydell

Martin Gilmore

Betty Green

Ronald Ireland

H. Kerwin

Daniel MacAulay

H. MacFarlane

Harris and Mary Mossman

Colin and Marjorie Ogden

Margaret Rogers

William Allan (Al) Scott

Hattie Thompson

Cassie Whitteker

Lists can be interesting. There used to be a fun publication called the "Book of Lists". It gave you information in the form of lists: lists of the world's ten longest bridges; lists of the ten people teenagers most admired; lists of all kinds. It was just a big book of lists, but it made for interesting reading

Lists can help us get to know each other and can help us to learn about ourselves. In our marriage preparation seminar here at Rideau Park we have couples spend time making lists. Each person in the couple makes, for instance, a list of their top priorities. Do they most need financial security, or to feel loved, or to have faith in God, to succeed, or to have fun...? Having made their individual lists the couple then comes together to compare lists, to understand how they are the same, how they are different, how they might live together so that everyone gets something of what they most need.

Sometimes lists can help remind us of that which we may not have fully realized. At a Session meeting some time ago the CD committee presented a list of all that it does, all the groups and activities that fall under its umbrella and the Elders were amazed to hear just how much activity is managed by this one committee.

How would we feel about the suggestion that lists can sometimes help us find God, help us see what is holy, or sacred, or blessed or graceful? Scripture is filled with lists. There are lists of genealogy, lists that lay out the family tree of David and of Jesus. There are Biblical lists of the supplies needed to build a temple, lists of spiritual gifts...

When we think of the year gone by here at Rideau Park and as we read through the pages of our annual report, one of the things we encounter is lists.

Some lists are obviously sacred. There is the list of those who have passed away in the past year, a list that stirs emotions: sorrow for loss and gratitude for lives lived among us.

There is the list of those baptised: God's grace revealed in a beautiful baby or in the faith of an adult who comes to our font.

There is the list of volunteers who give their time to help our congregation do its work. Someone once counted 650 volunteer positions here in our congregation: singers, leaders, teachers, committee members...How blessed we are by all that these people give.

Or look at the list of groups that use our church. These lists speak of our congregation's hospitality as we open our doors to our community and speak to our vitality as our own activities go on in this place.

Together as we reflect on the year gone by we can make a list of all that we may be thankful for as we move into this new year together.

Elizabeth

Steve

Georgina

Deli

Paul

Erin

Richard

Council has met five times since the last report. The council membership is as follows:

Chair	Marilyn Law
Vice Chair	Wayne Bond
Secretary	Steve Shipley
Chair of Session	Katherine Kelly
Session Representatives	Cameron Jeffrey
	Doug Robinson
Chair of Stewards	Jeff Allo
Stewards Representatives	Bob Roden (Treasurer)
	Tony Bernard
Chair of Stewardship	Brian Hamilton
Chair of Ministry and Personnel Committee	Doreen Hamilton
Ottawa Presbytery Representative	Karen Lamb
Chair of Board of Trustees	Judy Paré
President of UCW	Barbara Robinson
Chair of Administrative Committee	Nancy McPherson
Members at Large	Sandra Weedmark
	John DiFrancesco

The Ministers and the Church Administrator are ex-officio, non-voting members.

Council is responsible for the long range planning of the congregation among other things. In January Council held a half day workshop at the church, with Rev. David Illman-White as facilitator, to begin looking toward the future. In May an all day workshop was held at Galilee House in Arnprior with Rev. David Illman-White again acting as facilitator. Two priorities, among others, were identified as being the most important and these were communications and congregational development.

Wayne Bond agreed to look into the issue of communications and a Task Force was formed from members of Council as well as Scott Inrig, our webmaster, Marcia Gosse, Judy Paré and Barry Dewis who look after some of the advertising done by the congregation. Wayne's report is included in the Annual Report on page .

With regards to congregational development, draft guidelines were prepared for this task force and Council will begin work on this in the New Year.

Rev. Steve Clifton looked into setting up some type of worship service geared to young people. He set up a questionnaire on the web site and received approximately 15 replies. It was difficult to get all these young people together at one time; however, a lunch was held with some of them. There was no consensus as to what they would like to see us do, other than they did not want a worship service. Steve is going to review this again in the New Year and see if there is something else we can do to encourage young people in their faith.

This year the Rideau Park Foundation had approximately \$20,000 available for projects and the following were approved:

- \$3000 for the Bruce Harding weekend in October
- \$2000 for a young man from Somalia who has potential as an athlete in track and field. He is from the Heatherington area in a family of 13. We were approached by a member of Emmanuel United to see if we could assist him. The person who approached us had provided financial assistance to him and we

agreed to assist him for the coming year. The funds were placed in a trust account at the club where he is training. The club was agreeable to distributing the funds to him as needed. They will be used for his travel expenses and fees required to participate in events. This young person was so anxious to participate in track and field he often walked from his home to the club in Orleans because he could not afford the bus fare. We will keep you informed as to his progress.

- \$1000 to Ben Lim a member of our youth group who is working up in James Bay with aboriginal young people.

At the congregational meeting in October, it was moved that Council give the balance of the funds available to the kitchen project. Council did agree to this, subject to one outstanding request for funds which will be dealt with in the New Year.

Council also approved a simple form of application for funds from the Foundation which can be used for members and committees of the congregation who have a request for funds not to exceed \$3000. Any request over \$3000 from either the congregation or outside the congregation must use the longer form and be reviewed by a committee of Council.

This is a blessed congregation. As announced last year, we are the beneficiaries of a one-quarter interest in the Britt Estate. This is to be paid yearly in perpetuity. We have also been advised that we will receive a substantial donation from the Orville Hancock Estate sometime this year. Members of Council will be meeting with the Trustees and Stewards to come up with some creative ways we can use these funds.

Council also dealt with other issues including the Stewardship campaign and our challenging financial situation.

On behalf of myself and all members of Council we would like to take this opportunity to thank the staff for all they do to make this congregation such an active and vibrant place. We are truly blessed to have such a dedicated group of people.

Blessings to everyone and may the New Year be a blessed one for the congregation and our community.

Respectfully submitted,
Marilyn Law, Chair.

Urban Holmes defines spirituality as a longing or emptiness that we feel within. Our own spiritual path is shaped by the ways in which we try to fill the void or in how we work to meet the longing. Our own spiritual work is found in what we do to connect to God.

Spirituality is a strong and vibrant thread that is woven through all that we do at Rideau Park. From Youth Bible Study to our outreach work, from choir practice to committee meetings, we are always seeking to be in communion with the Holy One and to help others to find that which will satisfy their souls and nourish their spirits.

In 2009 there were a number of events and activities that were directed at deepening the spiritual life that we share. Elizabeth led a number of book studies, in spring and again in the fall. Spirituality retreats were held in spring and fall; on each occasion about 15 adults gathered at Galilee in Arnprior for a time of fellowship, reflection and renewal.

Annually in the season of Lent we try to place a special emphasis on spiritual growth. Meetings are cancelled in order to make room for God. A group gathers on Saturday morning to share food, fellowship and study. On Wednesday nights we meet for midweek services and then have a study session; this year our study looked at spiritual landscapes. Our labyrinth is also made available in each week of Lent.

This Lent we also shared in the "Belonging Project." People were invited to write about why they belong to RPUC. A great booklet is the result. The booklet created through the Belonging project and all past spirituality projects can be found on our church website.

2009 also saw the beginning of our congregational prayer chain. The prayer chain is a place to bring prayers and concerns in confidence so that others in our faith community can pray for us and those we love. If you would like to join the chain please speak to our coordinator, Doreen Hamilton (613-238-3993) or hamilton.doreen@gmail.com.

We look forward to another year of growing in the Spirit together in 2010.

Blessings,
Reverend Steve Clifton

Formation of the Communications Task Group was approved by Council at its June 17th meeting, in response to a need identified at the Council Retreat in May for the development and facilitation of a more coordinated and systematic approach to Rideau Park's communications and advertising, particularly to the wider community.

Members of the Task Group comprise those involved in various facets of Rideau Park communications, including Scott Inrig (webmaster, Rideau Park website), Marcia Gosse (editor, Churchpost), Barry Dewis (advertisements to VISTAS), Judy Pare (advertising for the Bazaar), Nancy McPherson (Chair, Administration), Rev. Elizabeth Bryce, and Marilyn Law. Council appointed Wayne Bond as the Chair, Communication Task Group.

From the beginning, at its August 24th meeting, the Communications Task Group has operated under the following principles:

- the review of communications opportunities should be broad in scope, but implementation of any changes should be simple, done in stages and build on current advertising activities;
- the Task Group should not "tread on the toes" or take over the functions of current communicators and advertisers at Rideau Park (both congregational and staff members), but provide coordination, support and ideas. It will initiate or undertake church-wide or overarching advertising activities that do not have an identifiable home;
- the modus operandi is to be practical and show progress in the near term;
- the Task group has been established for a limited period of time. At a later point, Council will determine if there is a continuing role;
- it regularly reports to Council.

During the Fall 2009, the Task Group undertook a number of initiatives, including:

- a Communications Scoping document for Rideau Park which overviewed the range of objectives for our communications, the range of events, programs and services to be advertised, the audiences –both internal and external – for Rideau Park's communications, and the range of media that we use to communicate (e.g., website, Churchpost, community newspapers, brochures, etc.). This scoping report was presented to Council and to the Fall congregational meeting.
- a weekly advertisement in the Church Directory of the community newspaper, EMC Ottawa South;
- a listing of the December 20th Christmas Concert in EMC Ottawa South (What's Happening) and the Ottawa Citizen (About Town);
- placement of brochures advertising the Bazaar, the Kazouri Jewelry sale and the Christmas Bell Concert at nearby public libraries and community centres;
- publication of an article on the Bruce Harding musical event in VISTAS. A big thank you to Jim Nelson;
- completion of a written protocol with content and technical guidelines for the Rideau Park website;
- compilation and updating of an External Media Contact list for use by Rideau Park's communicators.

Building on these 2009 activities, the Communications Task Group has drafted a list of priority activities for 2010 which, among others, include:

- Development and distribution of a brief communications checklist or handbook to all Rideau Park communicators or advertisers (e.g. event leaders, committee chairs, etc.) outlining the range of communications vehicles available along with the contacts, specifications and deadlines;

- Development of a common electronic information base listing all Rideau Park events and services that is continuously updated and can be accessed to produce/update the church website, RP News, Churchpost, mass e-mailings, brochures, advertisements for community newspapers, etc.
- Develop guidelines re. the frequency, length, content, review process for mass e-mailings about church programs to the congregation. Consolidation and updating of Rideau Park's congregational e-mail lists;
- Establishment of a small group of writers to draft articles/take photos about Rideau Park events, happenings for submission to community newspapers;
- In conjunction with the Property Committee, research and action on the design and replacement/improvement of the outside church sign (Alta Vista and Cunningham);
- The Task Group adopts a more active advertising role for major events/broader themes to ensure that information is sent to the various community newspapers, Citizen About Town.

I would like to thank the Task Group members for their enthusiasm and hard work in 2009. The contribution of Judy Paré to the Task Group prior to her resignation was much appreciated.

Respectfully submitted,

Wayne Bond, Chair Communications Task Group

The Ottawa Presbytery is one of the largest in the country. There are 60 pastoral charges with 76 congregations; total amount raised by congregations \$13.78 million; total M&S givings \$1.05 million; average weekly attendance 4,390; candidates for ministry 5. Rideau Park's clergy are all members of Presbytery as are the elected lay presbyters. For 2009 they were Chris Inrig, Brian Irvine, Karen Lamb and Don Melick. In addition to attending the monthly meetings, presbyters also serve on committees of presbytery and sometimes conference. Many covenanting services for new pastoral relationships in the Presbytery were also held and it is expected that presbyters will attend some of them.

This past year meetings were held at Woodroffe, Emmanuel, Dominion-Chalmers, First, Shawville, Riverside and St. Andrew's-Knox Bristol. Presbytery meets the second Tuesday of the month from September to May. Many of the committees meet at 4 p.m. followed by supper served by the hosting congregation and then followed by the business/program meeting. This year, two of the meetings were program meetings while the others were a combination of dealing with the business of presbytery and a presentation/discussion component.

Some of the actions that were taken were:

- a proposal calling on the City of Ottawa to uphold the policy on prohibiting city property to host Arms Exhibitors
- licensing of lay worship leaders
- sharing First United's journey that brought them to share facilities with All Saint's Anglican Westboro
- preparations for the General Council meeting in Kelowna BC, (including the forwarding of proposals and electing of commissioners) and receiving the reports of the commissioners after the meeting
- the committee preparations that saw Ottawa Presbytery being chosen as the site for the 41st General Council meeting in 2012 to be held at Carleton University
- recognition of ministry personnel celebrating milestones in ministry
- electing the new Presbytery chair and covenanting with the executive
- voting on two remits from General Council
- receiving an M&S report on the fund and hearing from the Mission Support committee
- approving the budget and assessments.

Some of the discussions and presentations covered topics such as:

- a spring program meeting focussing on "Called to Be Church" with 3 workshops on Being an Intercultural Church, Encouraging French Ministry and looking at Residential School Issues
- a presentation by Susan Palmaj, who returned from being an ecumenical partner in Palestine-Israel with the World Council of Churches
- H1N1 implications for ministry
- Racial Justice training.

In 2009, the YAYA (Youth and Young Adult) Ministry really found its feet. Some highlights were:

- 18 Camp Awesome programs serving 700 children, 16 congregations and creating leadership opportunities for 60 youth
- support for congregational youth leaders training events
- a new ecumenical ministry for young adults called "The Open Table": consisting of free monthly meals and fellowship time
- a day retreat at Golden Lake Camp
- a new website connecting young adults to local congregations
- a presbytery-wide night of programming for confirmation groups
- two youth worship services called "The Point"

-
- improved networking on youth ministry opportunities
 - participation of Presbytery youth in the Youth for Peace trip to Palestine/Israel, the national Racialized Youth Consultation and to General Council 40
 - participation of youth leaders in the Princeton Forum on Youth Ministry and the Canadian Youth Workers Conference
 - Ottawa Presbytery clergy participate in the Pastoral Care in Secondary Schools program
 - the awarding of a scholarship to Rev. Dr. Tom Sherwood to support his research into the current generation of young adults
 - lots of conversations, relationships, questions and resources that sought to create a church where you are welcomed and encouraged.

Some of the many services the Presbytery provides include:

- support to congregations during a change in pastoral relationship
- giving financial resources to supported ministries such as chaplaincies and Centre 507
- a resource centre which has a lending library and places orders regularly to the United Church Resource Distribution Centre (no shipping charges)
- Youth and Young Adult ministry
- support for administrative and process questions, including holding learning events
- support to Ministry personnel
- Marriage Education
- workshops for Congregational Leaders
- Training and Licensing of Lay Worship Leaders
- support in emergency situations.

Respectfully submitted,
Karen Lamb, Presbytery Representative

In 2009 Session continued its work on issues related to participation and involvement of current members and attracting new members. In April, Session was asked to consider the following questions and to send their responses to the retreat as part of the work done with the Church by Reverend Illman-White. The questions considered were:

- How do we live God's hospitality here at Rideau Park?
- How do we, at Rideau Park, practice discernment?
- How are scripture, prayer and contemplation central in our life together at Rideau Park?
- How do we, at Rideau Park, live God's justice?

In addition to our contribution to the overall work of membership, Session heard a presentation about and participated in a discussion of worship and young people. This was a pivotal presentation at the September meeting.

A key initiative this year has been the consideration of a request from a Rideau Park family to commission a stained glass window for the Chapel. Through the work of Nancy McPherson, Kathy Mayes, and Nancy Begg-Durkee, Session approached the company who did the windows in the Sanctuary, for a quote and for some sample window designs. After gaining approval at the Congregational meeting, the project is proceeding. The committee, working with the family, have decided on a theme and the window has now been measured. Installation of the window will not take place until the spring.

Session has also worked on the issue of the H1N1 flu and how to prepare as a Church group. A number of suggestions and ideas were generated for the consideration of the Ministers. This included the suggestions that the Ministers choose to dip the bread in the 'wine' during communion in order to reduce the number of people having contact with the elements. This was put into effect in the November communion and was quite successful.

The Committees of Session continue to function well. We have had excellent success filling the Committee Chairs and in attracting Elders to service. We continue to do visitations and phone calls. We are also continuing to put those who request it on an email contact list. This has reduced some of the demand on Elders for phone calls and is working well.

Respectfully submitted,
Katharine Kelly, Chair

The Trustees, on behalf of the congregation, hold title to the deed of the church property, and are responsible for ensuring such property is adequately maintained and used in accordance with the objectives of the United Church of Canada. In addition, the Board administers a number of funds established at Rideau Park under the direction of the Rideau Park Council and/or its committees. Revenues of these funds are derived from donations and the subsequent investment earnings. The funds are as follows:

The **Douglas Brown Memorial Fund** is used to support social activities for the physically and mentally challenged.

The **Rideau Park Foundation Fund** has been established to serve as a permanent source of supplementary funding for special needs at the church. Once the value of the foundation surpassed \$100,000 all income earned and one half of new unrestrictive gifts became available for disbursement. This fund surpassed the \$100,000 threshold in May 2007. In 2008 \$11,270 was expended from the fund earned in 2007. New donations and interest earned in 2008 provided \$18,902 available for disbursement in 2009 along with \$1,867.64 remaining unused from the year before for a total of \$20,770. This was the second year that money from this fund has been eligible for disbursement. Half the donations to the fund in 2009 combined with investment earnings will make \$7,010.57 available for eligible projects in 2010.

Interest earned from the **Dora Helmkey Legacy Fund** is to be turned over to the Committee of Stewards for use at its discretion.

The **Karl Rasmussen Fund** is used to assist people undertaking full-time studies directed towards full-time service in the Christian Church. Only income earned in a given year may be used for this purpose. Income becomes part of capital if not used in the current accounting period. In August, \$1,000 of interest from the fund was given to Wendy Hagglund to assist her in meeting the costs of her fulltime theological studies.

Income from the **Britt Estate** is used, as Council deems appropriate. This year the Trustees were asked to manage the investment of this funding in short term readily available financial instruments.

Members of the Board: Judy Paré (Chair), Gavin Currie, Norm Edwards, Bob Elliott, Murray Ferguson, Bas Groeneweg, Daryl Lindberg, Les MacLauchlan, Jacqueline Newton, and Keith Harris.

Respectfully submitted,
Keith Harris, Trustee

The Committee of Stewards is responsible for the management of church temporal and financial affairs. It met monthly, except for March, July and August. Last year the Committee members were:

Chair	Jeff Allo
Secretary	John Durkee
Treasurer	Bob Roden
Finance Committee	Bob Roden
	Jeff Allo
Property Committee	Rod Hagglund
	John Scollick
Administration Technical Support	Don Ford
Counting Teams	Andrew Jeffrey ¹
Representative on Council	Tony Bernard
Security	Robert Blake ²
Stewardship Liaison/Property Renewal Fund	Brian Hamilton
United Church Women representative	Mary Harris
Members at large	Catherine Ennis
	Michael Inrig
	Bill Ott
Staff Liaison	Debi Brown (ex officio)

¹ Also a member of the Finance Committee ² Non-member in 2008

Finance: We have ended 2009 with a deficit of \$8,458 against a surplus of \$16,807 in 2008. This decline reflects, to some extent, the financial times that we are currently facing. While we did not reach our goal, given the state of Church finances at the end of November 2009, ending the year with a manageable deficit is very encouraging and is a tribute to the congregation, who have responded very positively to special appeals throughout the year. In addition, the UCW was exceptionally generous in its annual contribution to our operations. We are truly grateful for the faithful witness of so many.

We expect that 2010 will be another challenging year for two reasons. Firstly, while the recession may be officially over it is not clear that economic improvements have filtered down to individuals by way of increased income. Secondly, as some of our founding and very supportive congregational members pass away, we lose their significant financial support. We face the challenge of replacing their contributions with givings from other members of the congregation. Consequently, for these reasons we appeal to all members and adherents to think prayerfully about the resources they can commit to the ministries and programs of our church during the coming year.

Last year Rideau Park's external accountants, Collins Barrow Chartered Accountants, conducted a program review of the 2008 financial statements. Nothing came to their attention that caused them to believe that the financial statements were not, in all material respects, in accordance with Canadian Generally Accepted Accounting Principles. The accountants' full report is available at the church office.

Property: The Stewards continue to monitor and maintain the church facilities. The spring walk-about identified only minor problems with the church building and grounds. In addition to the ongoing maintenance tasks, this year Stewards undertook and completed a project to improve the lighting in the Chancel.

Rideau Park Property Renewal Fund : Property renewal expenditures in 2009 totalled \$57,073 leaving a balance of \$36,748 for projects in 2010.

Total contributions and fundraising for the year were \$63,719. Two generous contributions - \$14,770 from the Rideau Park Foundation and \$5,000 from the UCW Furnishings Reserve Account were earmarked for costs associated with the refurbishment of the Beecroft kitchen. This project started this fall and will continue until next summer. The UCW contribution is for the replacement of the kitchen stove. A third contribution of \$2,100 from the Betty Green Estate will be used to help refurbish the Library when we undertake the renewal of the church office space, planned for 2011. The annual Lobster Dinner has continued as a fundraising project for Property Renewal. The monies raised from this year's dinner are being used for the replacement of the drinking fountain outside Brackenridge Hall.

This has been a busy year for property renewal. Much has been accomplished including upgrading the lighting in the Chancel and front of the Sanctuary. These welcomed improvements will increase the light levels for all the Choirs and the Bells. Beecroft Hall after receiving a new floor in late 2008 saw a complete makeover with refinishing the stage floor and extensive painting that also encompassed both Cunningham and Beecroft church entranceways. A new video projector and laptop computer plus, 50 new, light, stackable 3x3 replacement tables for Beecroft Hall were purchased. With UCW support a portable oak lectern with a built-in sound system was acquired. Name tag and display cabinets were also installed.

Beecroft Kitchen Renewal: After much input, discussion, thinking and re-thinking the renewal of the Beecroft kitchen has begun. A phased approach is being used to minimize disruption, keep the extent and pace of the changes more manageable and allow us to focus on the projects of the phases.

To date we are starting to see the new look of the kitchen with the addition of a third kitchen entrance beside the current pass-through and the replacement of the door by the dishwasher. The old island and hanging cupboard have been replaced by a new mobile oak island with 18 full access drawers and a granite countertop. This first phase work has been undertaken in concert with the users of the kitchen and we have experienced no disruptions to date.

These changes have alleviated congestion at the west entrance door by the dishwasher when the kitchen is used for events and on Sundays; improved the sightlines in the kitchen; brought more light into Beecroft Hall and provided improved design and space utilization to ensure necessary counter and storage space for optimum kitchen use.

Presently the cupboards on the north wall of the kitchen are being replaced, countertops ordered and a new divider screen for the pass through is being sourced.

In the next phase, planned for this coming spring, we will be replacing the remaining cupboards, sinks and countertops on the south and east walls, upgrading the kitchen wiring and lighting, replacing the flooring and renewing our kitchen accessories. In addition there will be a new stove with eight burners and an electric griddle. The suggested new unit will have two ovens one of which can be used as a warming oven. The refrigerator will also be upgraded.

*This is a big initiative. It is a wonderful opportunity for all of us to recognize all the kitchen effort and industry that has gone on through the years to make hospitality a fundamental value at the center of our Rideau Park church community. It is a chance to recognize the contribution of the UCW, its members and all its silent partners who have worked tirelessly together in supporting the thousands of events that have been hosted over the years. **The Property Renewal Fund is seeking support from those who have not yet contributed financially to these worthwhile improvements. With your generous givings and encouragement we will be able to continue our work.***

Additional Property Renewal Activities: In addition to the kitchen renewal we are planning to upgrade the Beecroft balcony space for the congregation's youth and young adults. This will include replacement of the existing furniture. Consultation on refurbishing the office space will be undertaken with a view to bringing forth a plan for 2011. The Council Communications Task Group is investigating options to improve/upgrade the church's exterior sign with a view to bringing forth a plan of action in 2010. A full update on the 2004-2011 Property Renewal Long Range Plan will be presented in 2010.

The 2010 Property Renewal Plan, a report on capital property expenditures, outlines our plans for 2010 and can be found on page 26 of this report.

Acknowledgments: Several congregational members, who are not Stewards, contributed extensive time and talent to the work of the Committee of Stewards and the Stewards wish to convey their appreciation of these contributions:

Barbara Jeffrey, our Envelope Secretary;

Scott Inrig for providing and sustaining Rideau Park's active Internet web site presence;

Norm Edwards for maintaining the sound system and coordinating its use for worship;

All the Duty Officers, who are coordinated by **Robert Blake**;

The many volunteers who serve on **Weekly Counting Teams**; and

The **UCW**, which again contributed to the financial health of the congregation and the M&S Fund.

I would also convey the Stewards' ongoing gratitude and high praise to our church staff. To Paul Sorg, our Custodian, who maintains the property, so that the physical facilities are one of our greatest assets, allowing us to witness to our faith as a congregation and within our local community. To Debi Brown, our new Administrator, who maintains the financial records and looks after the day to day financial transactions. To Erin O'Neill, who helps with preparation of notices and appeals, the Stewardship Campaign and other communication needs of Stewards.

Respectfully submitted,

Jeff Allo, Chair

The purpose of United Church Women is to unite all women of the congregation for the total mission of the church and to provide a medium through which they may express their loyalty and devotion to Jesus Christ in Christian witness, study, fellowship and service.

Active Members:	101	TOTAL MEMBERSHIP:	127
Associate Members:	12	Life Memberships:	60
Inactive Members:	14	Circle Group:	5

Life Memberships 2009: Were awarded to: Ruth Ebertz, Gerri Scott & Bunny Warren

In Memoriam: Betty Green, Elizabeth Edwards, Patricia Horne and Rae Edwards

2009 Executive:

Honorary Presidents	Rev. Elizabeth Bryce, Keva McKennirey
Past President	Lynda Coombe
President	Barbara Robinson (member of RPUC Council)
Vice President	Vacant
Recording Secretary	Marcla Eastwood
Asst. Recording Secretary	Norine Wolfe
Treasurer	Marcia Gosse*
Archives, Literature and Communication	Kay Irvine
Bazaar Convenors	Ruth and Peter Scobie
Community, Friendship and Visiting	Karin Ott
Finance and Mission	Mabel Bannerman
Flowers	Dorothy Valliant
Membership	Marg Sturley
Nominations	Lynda Coombe
Quilting	Ruth Ebertz and Helen Cameron
Social Functions	Bea Christie, Nancy Begg-Durkee and Jessie Weldon-Gibb
Supply and Welfare	Marg McNally
Steward Representative	Mary Harris
Council of Women	Joyce Ireland*
Presbyterial Representative	Ruth Stockley
<i>*not members of UCW</i>	

Unit Leaders

Unit 1	Phyllis Bradt	Unit 6	Grace Shaver
Unit 2	Mabel Bannerman	Unit 7	Janet Dundas and Sandra Weedmark
Unit 3	Ruth Stockley	Unit 10	Jessie Weldon-Gibb
		Circle	Contact Lorna McCrea

Executive Happenings and Responsibilities:

President: Chairs Executive Meetings, (10) and General Meetings (4); selects Guest Speakers; organizes UCW Sunday; assisted in the planning for the World Day of Prayer Service; attends Council Meetings. Guest Speakers included: Ryan Shearer and Mary Lenox of Investor's Groups, Patricia Halford's Choir and the Shulist Family.

Past President: Participates in UCW Sunday.

Corresponding Secretary: Sent and received cards to and from people concerning Sympathy, Get Well, Congratulations, and Thank you for flowers, lilies and cards etc. Sent 14 cards and received 26 expressions of Thanks.

Treasurer: Thank you Marcia.

Convenor Reports:

Archives/Literature/Communications: 6 books added to the library. "First Light" (inspirational writing), "Spirit of Gentleness", "Contemplative by Design" (creating quiet spaces), "Post Cards from the Valley" (encounters with fear, faith and God), "The spirituality of Gardening", "The Expansive Power of Christianity".

Bazaar: Ruth and Peter Scobie have ably convened another very successful Bazaar. The proceeds from the Bazaar were \$19,870. This year, a "Silent Auction" was trialed and this proved to be very successful. The Mini Bazaar was held in the parlour which eliminates storing and moving items. 42 special guests were welcomed.

Community/Friendship: Karin monitored and welcomed those who were baptized, confirmed or transferring to RPUC. The parents of newly baptized babies receive booklets. The mothers receive the UCW pamphlet. There were 9 baptisms, 5 girls and 4 boys. 3 new members transferred to RPUC and 1 adult Confirmation.

Finance and Mission: The UCW supports 29 local charities and community services. Total donation: \$5500. \$5000 from our reserve furnishing account was donated to the Rideau Park Stewards to help with the refurbishing of the Beecroft kitchen. 40% of balance of funds at year end will go to Mission and Service and 60% to RPUC Stewards. 30 small and 5 large burgundy table cloths were purchased. Thanks to Kathy Mayes for spearheading that effort.

Flowers: At Easter 87 Lilies were distributed. Thank you to those who delivered flowers on Sundays and at Easter. Families placed memorial flowers in the sanctuary on 17 occasions. Mabel Bannerman, Mary Harris and Jessie Weldon-Gibb organize the names for recipients of the weekly flowers, lilies and the red poinsettias.

Nominations: The 2010 positions of Vice President and Bazaar Coordinator are vacant.

Quilting: The Quilters contribute greatly to UCW fundraising. They kept busy 48/52 weeks.

Supply and Welfare: Thank you to the congregation for recycling. 99 pairs of eye glasses for world eye clinics, postage stamps for Canadian Guide Dogs, Campbell's soups labels to buy school supplies, pop can tabs for the Scouts and used greeting cards. 42 pairs of mitts, 36 helmets, 5 scarves, 10 toques, 1 tam have been knitted. These knitted items now go to Ledbury and Banff Community Centres.

Council of Women: The Council of Women (OCW) is an affiliation of women's organizations whose aims are to identify emerging social problems affecting women and their families and to educate the members about these issues. Issues discussed include: Buying Fair Trade products, the P3 model to fund health care capital costs and the Ontario Poverty Reduction Strategy. Advocacy initiatives of the OCW included the need to increase funding for residents in Long Term Care facilities in Ontario, the Ottawa Council on Aging and the Ottawa Hospital Advisory Board. Meetings are held at RPUC.

Stewards' Representative: Main initiative was to see the kitchen renovations underway. To date a third kitchen entrance beside the current pass-through has been installed and the old island and hanging cupboard have been replaced by a new mobile oak island with a granite countertop. The changes will continue in the New Year and include the purchase of a new stove and refrigerator. Thank you to Stewards and Brian Hamilton in particular for making this renovation happen.

Unit Reports: There are 6 units. Each Unit has monthly meetings, usually a program involving films, videos, guest speakers, or a topic for discussion. A time of Devotion is also an important part of the meeting.

- Unit 1** Makes jams and jellies for the Bazaar.
- Unit 2** Hosts the Valentine Coffee Party. Holds the Book Sale. Manages the Deli table for the Bazaar which entails 7 work parties making turkey meat pies and pizza.
- Unit 3** Hold the 2 Nearly New Sales and a fashion show with 10% of the proceeds going to UCW.
- Unit 6** Contributes to and manages the Craft Table for the Bazaar.
- Unit 7** Prepares baskets for the Bazaar and has a Bake sale. This year there was a bus trip to Montreal and they hosted a Kazuri Jewellery Sale with proceeds to The Stephen Lewis Foundation.
- Unit 10** Caters to the Curling Club dinner and Harmony Club luncheons.
- Circle** Reading and discussing Elizabeth Lesser's "The Seeker's Guide: Making Your Life a Spiritual Adventure". Held a film night in spring, viewing a biography of Mother Teresa. Hosted a Saturday morning event to celebrate the launch of the Charter for Compassion.

Samples of Programs: Study and discussion of "Song of Faith", Travelogues of members trips to Australia, Papua New Guinea, China and the Mediterranean (Italy, France, Spain, Croatia, Crete, Greece and Turkey). Genealogy, Issues of Justice and Tolerance facing Christians, reminiscences of WW2, and members telling their life stories.

We are blessed with outstanding people who contribute so generously to their time, energy and talents, to enrich the lives of those of our congregation, staff and the community.

Thank you to the members of the congregation who helped with our major fund raising events. The Book Sale, Turkey pie making, Nearly New Sale and last but not least, the Bazaar!

The UCW would like to take this opportunity to express our appreciation to Ministers, Rev. Elizabeth Bryce, Rev. Steve Clifton and Rev. Georgina Fitzgerald for their continued support, and thank you to the staff, Debi, Erin and Paul and Lorraine Sorg, for their support and helping in so many ways.

Respectfully submitted,
Marcla Eastwood, Recording Secretary

The Christmas Treasures Bazaar that was held on Saturday, November 7th, 2009 was a tremendous success and was attended by many in the congregation and the community. A profit of \$19,870 was raised to support many worthy church projects.

Set-up for the bazaar started on Wednesday, Nov. 4th and already donations for the General Store, Christmas Corner and Book Alley began to come in. On Thursday, a team of women came to the church to make the table centerpieces and others to make the fillings for the sandwiches. The Ladies Boutique and Garden Center also began to receive donations. Friday was a particularly busy day with a large group of women arriving at the church by 8:00 to begin making the sandwiches. Other areas, including the Crafts, Kid's Stuff, Jams & Jellies, Delicatessen, Baking, Gift Baskets and Silent Auction, a new and very successful area, began to set up their tables and the kitchen began to receive squares made by each Unit. Beecroft Hall was set up with tables. Preparation in these areas continued until 9:00 p.m at which time the Venturers arrived to act as night security. Saturday also started early with the women arriving again at 8:00 a.m. to arrange the plates of food and all the tables finished up their final touches.

At 10:00 a.m. we welcomed 42 special guests who were able to shop without the hassle of the large crowds. We had a beautiful sunny day and although it was a bit cool, people were lined up outside awaiting the 1:00 p.m. opening bell. If the day had been extremely cold or rainy we would have allowed our guests to wait in the church. Sales were up from last year and 369 tickets were received for the Tea Room. With only 3 hours to sell items, it was up to each table as to whether or not they would sell to the bazaar workers beforehand. All food areas in the parlour preferred to wait until 1:00 to start their selling.

The Mini Bazaar was held between services on Sunday in the parlour. This allowed the women to place leftover items directly on tables for the next day and not have to store them away. This proved to be very successful.

Paul Sorg and his family deserve a special note of thanks for the efficient setup and cleanup. Their help and direction added to the total success of the bazaar and they were a wonderful help to both of us. Also a special thank you goes out to Marcia Gosse who so ably and efficiently manages the finances of our bazaar.

There are a few areas that will have to be addressed for next year.

1. This year we had more Special Guests attend than were invited. It was recommended that there should be a limit of 1 family member or friend accompanying each guest and no children should attend in the morning. Perhaps we should include 1 complimentary ticket with each invitation in order to eliminate whole families sitting down to tea.
2. There are a great number of new convenors that will be needed next year and we may have to look outside of the UCW to fill these spaces.
 - a co-convenor to help with the Food
 - a new convenor for the Christmas Corner
 - a new convenor for the General Store
 - a new convenor for the Ladies Boutique
 - 6 more workers for the Jams & Jellies
 - new Bazaar co-convenors

3. There was a discrepancy between the number of plates of food made and the number of tickets sold. There may need to be ticket collectors at all doors and the elevator. Helpers should be reminded that the Tea Room is not complimentary.
4. The congregation needs to be reminded that donations should be clean and in good working order with no missing parts. Disposing of the remaining items is getting more difficult and we may have to start paying for our own dumpster. Keith Harris has outlined some announcements that should be presented to the congregation in the weeks leading up to the bazaar.

It has been our pleasure to convene the Christmas Treasures Bazaar again this year. It was a rewarding experience to work with so many dedicated and committed people from Rideau Park and to be part of such a worthy cause. We will be stepping down as convenors this year but will continue to support the new convenors and to help at the bazaar.

Respectfully submitted,
Ruth & Peter Scobie, Co-convenors

The purpose of the annual Fall Stewardship Campaign is to secure Rideau Park's financial needs for the year ahead and to identify the congregation's time and talent commitments. The 2010 Projected Budget approved at last year's Annual Meeting established the campaign's 2010 financial objectives.

Our collective thanks goes to the leadership of Rod and Linda Hagglund, this year's Stewardship Campaign Co-Chairs, for their spiritual leadership in lifting up our stewardship campaign objectives for your time, talents and financial support. Their message highlighted the importance of individual stewardship commitments to ensure the spiritual and program success of our church community. They noted that the Campaign gave us an opportunity to think once again of the blessings that flow to us and others through our Rideau Park family, and to reflect on our roles within this family. They asked us to respond to the campaign theme "Sharing the Flame" by seeking God's blessing and guidance, and considering how we can contribute both financially and with our time and talents, to keep this flame we share burning brightly. Thank you Rod and Linda.

Stewardship at Rideau Park is a complex activity requiring thoughtful effort and diligence. There is a lot of work behind-the-scenes to get it right. We, at Rideau Park, respond well to a smooth-running campaign especially when supplemented by a morsel of cake. For this year's campaign our gratitude goes to: Reverends Elizabeth Bryce and Steve Clifton for their thoughtful leadership and full support; Debi Brown for her welcome advice and her orchestration of the data requirements and production of pledge forms, as well as tracking the progress of the campaign; Erin O'Neill for keeping us in supplies, recording the Time and Talents and showing us what her new photocopier can do; Steve Shipley and Lise Gauvin for helping with deliveries of Stewardship packages; Chris Inrig and Doreen for one very late Friday night stuffing the packages; the cake servers who pitched in on short notice; and to Barbara Jeffrey for faithfully recording all the new pledges in the system.

For 2010 we received 343 pledges from 612 households for a total of \$542,414 which is 3.8% more than last year. Of these, 247 honour their pledges through preauthorized remittances (PAR) via their banking institutions. We receive \$441,477 (81.4%) of our pledged contributions by PAR, a decrease of .7% from last year. This strong support for givings by PAR ensures our cash flow throughout the year, greatly reduces the work of the counting teams and enables us to keep our monthly Mission and Service contributions to the United Church of Canada current.

The Ministries and Programs Fund (old General Fund) received 341 pledges for a total of \$402,876, Mission and Service received 167 pledges for \$93,885, and the Property Renewal Fund received 162 pledges for a total of \$45,893. The Ministries and Programs Fund increased by \$12,143 (3.1%), Mission and Service is up by \$4,406 (4.9%) and Property Renewal increased by \$3,522 (8.3%). These positive changes reflect progress towards rebuilding the lower pledge base we encountered (in 2008 and 2009) from the passing of some of our members or, in other cases, changed life circumstances. The Committee of Stewards' efforts to bring forth a budget that is at the same expense level as proposed in 2009 are welcomed. To achieve the 2010 Budget targets we are limiting our expense growth over actual expenses in 2009 to 3.0% (\$18,691) and forecasting our revenues will have to increase over actual 2009 revenues by 4.3% (\$27,149). Each year actual givings exceed the amounts pledged by several percent and this is anticipated in the budget planning for the new year. Anticipated budget revenues for 2010 are 23.9% more than pledged. This gap continues within the upper range of past pledging patterns, and indicates once again this year that with considered diligence, full commitment to honour our pledges and generous responses to the direction of our leaders, we can achieve the 2010 budget requirements of \$652,944.

The Memorial Fund began 2009 with a balance of \$3,258. Donations received were \$3,763. In 2009 \$4,151 was disbursed to purchase the new defibrillator, the oak boxes for Food Bank offerings and the finishing of the material display and name tag cabinets. The year-end balance is \$2,870.

Your continuing support of our efforts is a true blessing and reflects how Rideau Park is such a special place.

Respectfully submitted,
Brian Hamilton, Chair

This has been another very busy and successful year for our staff team. For the first time in quite a few years we had a full team, all year. Our newest employees, Debi Brown, our Administrator and Rev. Georgina Fitzgerald, our Minister of Pastoral Care, joined Rideau Park in October and December 2008 respectively. I'm sure Debi and Georgina felt there was a steep learning curve in the beginning of 2009, learning their jobs, working with their colleagues as well as all the volunteers, and putting names to all the faces that pass through the doors of Rideau Park each day. However, despite these challenges both Debi and Georgina quickly took up their tasks and I'm sure everyone in the congregation would agree that they have done an exceptional job taking on their roles. I know the Stewards in particular are pleased with all the help they receive from Debi. The rest of the team, Elizabeth, Steve, Richard, Erin and Paul are to be commended for the assistance they have provided to Debi and Georgina, helping to ease their integration into the life of Rideau Park. Thanks also to Chris Inrig for being available to answer questions and guide Debi through some of the confusing details early in the changeover.

The stability of the staffing situation meant that everyone could concentrate on expanding their knowledge and expertise within their individual responsibilities. Elizabeth continued to meet with other members in the community through outreach activities in the Southeast Ottawa Community Centre and Ridgemont High School. Steve spent a lot of time researching and contacting the young adult group in our congregation and in Presbytery, discerning their worship needs and preferences. Georgina had a busy year meeting and visiting with our large group of pastoral care members. We are blessed to have three such capable and thoughtful ministers as shepherds in our congregation.

Our music experience has been growing as the choirs provided excellent inspirational music under Richard's direction both at worship services and special concerts. Richard auditioned new lead singers throughout the summer and we are pleased to have Sonya Sweeney, Natalya Matyusheva, James O'Farrell and Kyle Merrithew providing such wonderful leadership within the choir, as well as in quartet, trio, duet and solo settings. They are a pleasure to hear.

And where would Rideau Park be without the steady support of Erin and Paul. Through all the upheavals of the past year with work starting on the renovation of the Beecroft kitchen, both Erin and Paul have kept clear heads, patience and a sense of humour when Brian showed up to ask whether it would be a good time for the next stage of one of his projects.

Among the responsibilities of the M&P Committee is a review of the ministerial Housing Allowance on a three year review period. In 2009 we were required to review the allowance. The review was completed and the recommended change was approved by Council and Presbytery.

The M&P Committee consists of Hyacinthe Wade, Marjorie Melick, Wendy Hagglund (until June), Jim Holton, Mike Presley, Bas Groeneweg and our new member Alyce Dunnewold. Thanks to each of them for a year of good discussions and consultation.

We have a great deal of expertise in our staff and I know every member of the congregation is a recipient of that expertise in some way or another and appreciates the ministry of each and every member of the staff. In an expression of thanks, the M&P Committee, on behalf of the congregation gave each staff member a gift card for a small treat such as coffee or chocolate or books, kitchen or knitting supplies. May God bless each member of our wonderful staff in 2010.

Respectfully submitted,
Doreen Hamilton, Chair

In 2009, our new Administrator familiarized herself with RPUC policies, procedures and operations in general. The Administrative Committee was consulted regarding the purchase of a new photocopier in the winter and software suitability in the late spring, but in general, Administrative matters ran so smoothly under the helm of the new Administrator that our services were not frequently required.

Respectfully submitted,
Nancy McPherson, Chair

The Nominating Sub-committee is a Sub-committee of the Volunteer Resources Committee. The objective of the Sub-committee is to ensure that all vacancies on Council, Session, the Committee of Stewards, Trustees, and Presbytery Representatives are filled each year. In addition, the Sub-committee is responsible for recommending appointments for the position of Chair for each of the Sub-committees of Session and the Committee of Stewards. The Nominating Sub-committee consulted both the Ministerial staff and the Council Chair concerning the church's needs for 2010. As of January 7th, 2010, the Sub-committee has been able to fill the majority of the positions available. The Sub-committee has advertised the positions of Chair of Pastoral Care (one Sunday) and Co-chair of Worship and Music in the church bulletin for the month of December 2009.

Summary of Nominations

Vacancies on Council this year included: Chair of Session, Chair of Pastoral Care, Co-chair of Worship and Music, Council Member at Large, Chair of Trustees, Council Session Representative, and Chair of Volunteer Resources. Candidates have been identified for all of these positions except for Chair of Volunteer Resources.

This year, 27 Elders were due to finish serving their terms as members of Session. The names of those who have agreed to extend their terms (18 Elders agreed to do so) and eight new nominees can be found in the attached table under the title **Members of Session**. Nine Elders have decided not to renew their terms. Session currently has 56 members for 2010 and we are still seeking members willing to serve as Elders.

The Committee of Stewards did not require any new members this year. The attached table includes the **Members of the Committee of Stewards**.

Recommendations:

As indicated in the attached table, the Congregation's approval is requested for:

1. the appointments to Council;
2. the extension of terms of office for Elders and stewards;
3. the slate of new Elders and stewards; and
4. the appointments of the Chairs of the Committees.

Engaging the broader membership in the life and work of the Church continues to be a challenge. The Sub-committee would like to take this opportunity to thank all those who are finishing their terms this year for their tireless dedication and service to the Church.

I would like to express my sincere thanks to all the members of the Nominating Sub-committee: Wayne Bond, Mary Lynne Holton, Marilyn Law, Jacqueline Newton, Drew Presley, Steve Shipley, and Ministers Steve Clifton and Elizabeth Bryce for their support and dedication to achieving our objectives. The Sub-committee would also like to sincerely thank all those who have agreed to contribute their time and talents to the life and work of Rideau Park United Church.

Respectfully submitted,
Shanti Inman, Chair

Nominating Committee Report

The following pages list the appointments (both proposed and existing) to Council, Session, the Committee of Stewards, Trustees, Presbytery Representatives and the Chairs of all Committees with the terms of office that they have agreed to serve. For clarification, the year in parentheses after each name indicates that the person will serve in the position until February of that year (that is, until the congregational meeting in February).

An asterisk (*) indicates new appointments to the positions indicated. A double asterisk (**) indicates an extension of term.

COUNCIL MEMBERSHIP

- The Chair and Vice-Chair are elected for two-year terms.
- All other Council members are elected for three-year terms, except as indicated.
- The Ministers and Church Administrator are ex-officio, non voting members.

COUNCIL CHAIR	Marilyn Law	(2011)
COUNCIL VICE CHAIR	Wayne Bond	(2011)
COUNCIL SECRETARY	Steve Shipley *	(2011)
CHAIR OF SESSION	Doug Robinson*	(2013)
SESSION REPRESENTATIVES	Cameron Jeffrey**	(2010)
	Karen Humphries*	(2013)
CHAIR OF STEWARDS	Jeff Allo	(2012)
STEWARDS REPRESENTATIVES	Bob Roden	(2012)
	Tony Bernard	(2011)
CHAIR OF STEWARDSHIP	Brian Hamilton	(2012)
CHAIR OF MINISTRY AND PERSONNEL COMMITTEE	Doreen Hamilton	(2011)
OTTAWA PRESBYTERY REPRESENTATIVE	Karen Lamb	(2012)
CHAIR OF BOARD OF TRUSTEES	Gavin Currie*	(2013)
PRESIDENT OF UNITED CHURCH WOMEN	Barbara Robinson	(2011)
CHAIR OF ADMINISTRATIVE COMMITTEE	Nancy McPherson	(2011)
MEMBERS AT LARGE	Sandra Weedmark	(2012)
	Greig Scott*	(2013)

Members retiring: Katharine Kelly (Session Chair), Anne Blades (Council Member at Large), John Di Francesco (Council Member at Large), Kristi Marr (Co-chair of Worship and Music), Judy Paré (Chair of Pastoral Care and Chair of Board of Trustees)

STANDING COMMITTEES:

SESSION: CHAIR	Doug Robinson*	(2013)
CLERK OF SESSION	Karen Lamb	(2011)
ELDERS: See Members of Session listed below		

STEWARDS: CHAIR	Jeff Allo	(2012)
TREASURER	Bob Roden	(2012)
STEWARDS: See Members of Stewards listed below		

CHAIRS OF COMMITTEES:

MINISTRY AND PERSONNEL	Doreen Hamilton	(2011)
ADMINISTRATIVE	Nancy McPherson	(2011)
STEWARDSHIP	Brian Hamilton	(2012)
SOCIAL ACTION AND OUTREACH	Sandra Weedmark	(2012)
WORSHIP AND MUSIC (Co-chair)	Patricia Whitridge	(2011)
	Shailja Verma*	(2013)
PASTORAL CARE	Alyce Dunnewold*	(2013)
VOLUNTEER RESOURCES	Vacant	
NOMINATING	Shanti Inman	(2011)
CHRISTIAN DEVELOPMENT	Drew Presley**	(2011)

TRUSTEES: CHAIR	Gavin Currie*		
VICE CHAIR	Vacant		
SECRETARY	Daryl Lindberg		
MEMBERS:	Ed Boothe*	Norm Edwards	Bob Elliott
	Murray Ferguson	Bas Groeneweg	Keith Harris
	Les MacLauchlan	Jacqueline Newton	

PRESBYTERY REPRESENTATIVES:	Chris Inrig	Brian Irvine
	Karen Lamb	Don Melick

MEMBERS OF THE COMMITTEE OF STEWARDS:

Jeff Allo	(2012)	Brian Hamilton **	(2012)
Wayne Bennett	(2012)	Michael Inrig	(2011)
Tony Bernard	(2011)	Andrew Jeffrey	(2011)
Gaveen Cadotte	(2012)	Bill Ott **	(2011)
John Durkee**	(2011)	Bob Roden**	(2012)
Donald Ford **	(2011)	John Scollick	(2011)
Rod Hagglund**	(2011)	Nadia Senyk	(2012)

MEMBERS OF SESSION:

Acquaah, Elizabeth**	(2013)	Kelly, Katharine **	(2011)
Atwell, Marion	(2011)	Klimowicz, Susan**	(2011)
Bayne, Malcolm **	(2011)	Kurz, Christel	(2012)
Beattie, Graeme*	(2013)	Lamb, Karen	(2011)
Becker, Lynda	(2012)	Law, Ellen*	(2013)
Begg-Durkee, Nancy **	(2011)	Law, Marilyn**	(2012)
Belo, Myrna*	(2013)	Little, Ron*	(2013)
Bennett, Heather*	(2013)	Mayes, Kathy **	(2011)
Bernard, Sharon*	(2013)	McPherson, Nancy**	(2012)
Buske-Wichser, Janet**	(2011)	Melick, Don **	(2011)
Currie, Gavin **	(2013)	Neal, Brian*	(2013)
Derby, Barbara **	(2011)	Newton, Jacqueline **	(2011)
Detchou, Dieudonné	(2012)	Palmer, Geraldine	(2011)
Dundas, Janet	(2012)	Presley, Drew**	(2011)
Groeneweg, Bas **	(2011)	Robertson, Doug **	(2011)
Hamilton, Doreen **	(2011)	Robertson, Elaine**	(2011)
Hamilton-Silcoff, Janette	(2011)	Robinson, Doug **	(2011)
Harper, Don	(2011)	Scobie, Ruth	(2011)
Harper, Lois**	(2013)	Seymour, Gary	(2012)
Hollands, Cathy**	(2011)	Shiple, Steve	(2011)
Holton, Jim **	(2012)	Sturley, Ken **	(2013)
Holton, Mary Lynne**	(2012)	Valliant, Dorothy **	(2011)
Humphries, Karen	(2012)	Vaughan, Susan **	(2011)
Ingrams, Heather**	(2011)	Wade, Hyacinthe	(2011)
Inman, Shanti **	(2011)	Weedmark, Sandra **	(2011)
Inrig, Chris**	(2011)	Weldon-Gibb, Jessie	(2011)
Ireland, Joyce**	(2011)	Whitridge, Kate*	(2013)
Jeffrey, Cameron**	(2013)		

Elders retiring: Jacqueline Berrow, Bonney Clark, Pat Currie, Joan Gold, Lorne Gold, Heather Gribben, Ann Ketcheson, Kristie Marr, Joanne Rodgers.

The year 2009 was again a year of exploration for the Worship and Music committee. We held four open meetings where all interested members and adherents of the congregation were invited to attend, to allow us to receive as much input from the congregation as possible. The meetings are open with no set formal structure or documentation, promoting wide-ranging discussions on quite diverse topics relating to worship and music.

2009 saw the creation of two new musical groups for our young folks in grade 6 and up: the Jubilation choir and the Grace Notes chimes group both started in September with strong participation from our youth. The Worship and Music Committee oversaw the work of our choirs: Chancel Choir, Joyful Noise, Cherubs and the newly formed Jubilation, as well as the bell choirs: Touch of Brass, Belle Ensemble, A'ppealing Sound, Noteable Sound and the newly formed Grace Notes.

A review of fees for weddings and funerals was undertaken by the committee and some changes were made as a result.

We received a request to hold contemporary worship services for our young adults as an alternative to traditional services. This led Steve Clifton to conduct a survey of young adults about their interest in worship or young adult ministry. One result of this was a new initiative in Advent worship called Encarna.

The Worship and Music Committee requested a Foundation grant to hold a weekend of workshops and worship with Bruce Harding, which took place in October. About 35 people participated in the workshops, most from Rideau Park with a few from other churches in the Presbytery. With surplus funds and a private donation, three new African drums were purchased for use in worship.

Our Chancel Choir and Touch of Brass participated in a Reformation Sunday celebration with Knox Presbyterian Church and preacher Malcolm Sinclair. The event was supported financially by the Music Fund.

A number of special programs take place annually: the Dianne Ferguson Honorary concert, Lenten mid-week services, Holy Week services, Bells in Spring concert, summer mid-week services, Advent mid-week services, Christmas Bell concert, Christmas Choir concert and Christmas Eve services.

We would like to offer our special thanks to all who enrich our worship in so many different ways, including our coffee organizers, head ushers, decorators..., and particularly Marcia Gosse, Andrea Laliberté, Nadine Dawson, and Gretchen Conrad for their dedication to the roles they have accepted in the music programs.

Respectfully submitted,
Kristie Marr and Patricia Whitridge, Co-chairs

It seems as though time flies when it comes to bells. As fast as we can ring, another call comes in from a church that is interested in hearing the glory of God through music – and bells are the medium to provide this outlet. All that is to say, it has been a very involved year for the Rideau Park Handbell groups.

A Pealing Sound (ages 12 and up) consists of teenage ringers who have enjoyed playing at many of the area retirement homes in conjunction with La Bell Ensemble, as well as several Sunday morning services at Rideau Park. The members of the group have learned to apply the various techniques that will hopefully form the basis of a long relationship with ringing bells.

A Touch of Brass is one of two adult handbell groups with 15 dedicated members and several volunteer substitutes, plays at Rideau Park United on a regular basis as well as sharing their talents at many of the area retirement homes, A-Channel Television, Rehabilitation Centre, etc.

La Bell Ensemble is the second adult handbell group with 11 dedicated members from Rideau Park and the Community, share their talents at Rideau Park United as well as various venues i.e., weddings, retirement homes, area churches, A-Channel Television, etc. Their talents have also been shared and appreciated by many groups in the community.

At a Handbell Festival that was organized in June 2009 at Carleton University, several members of Rideau Park's Bell Choirs participated in the overall planning of the Festival for 350 ringers from across Ontario. In addition, a combined group of ringers from Rideau Park comprised the Rideau Park Festival Choir.

All of the groups were active participants in the "Bells In Spring" Concert – a massed concert which incorporated three (3) handbell choirs from neighbouring churches in the community as well as the four (4) handbell and chimes choirs from Rideau Park. This year we started the Christmas season with our annual "Ringing In Christmas" Bell Concert in November for Rideau Park Bell choirs.

Thanks to all of the bell ringers - your hard work and dedication to the outreach at Rideau Park has meant so much musical enjoyment for all who listen.

If you are interested in joining any of these talented groups and becoming a handbell ringer or chimes ringer, please call Marcia Gosse at 613-731-2281.

Respectfully submitted,
Marcia Gosse

At the beginning of 2009, the Chimes program here at Rideau Park had 18 ringers in the Note-Able Sound choir. The participants ranged in age from 8 years old to 12 years old (about grades 2-7) and met every Thursday evening from 7:20 to 8:00 p.m. in Brackenridge Hall. Note-Able Sound was directed by Andrea Laliberté with the assistance of Melanie Gosse.

Then, in March 2009, one of our participants, a 12-year old grade 7 student named Patrick Armstrong, composed a piece for the Chimes to play called "Sorrow". A smaller "teen" group was formed to learn his piece and was called "Grace Notes". Grace Notes members were the oldest ringers from Note-Able Sound (mostly grades 6 & 7). In order to accommodate rehearsals for both Note-Able Sound and Grace Notes, we changed our rehearsal times to 7:20 - 7:45 for Note-Able Sound and 7:45 - 8:15 for Grace Notes.

In the spring of 2009, our numbers also rose to 20 in total for both groups. Both Note-Able Sound and Grace Notes participated in the Bells in Spring Concert and Note-Able Sound offered music to the congregation during morning worship in the spring of 2009.

In the fall of 2009, it was decided that Grace Notes would continue as a separate entity from Note-Able Sound. We began the fall with 10 members in Note-Able Sound (grades 2-6) and 14 in Grace Notes (grades 7-11). Many members of Grace Notes assisted with Note-Able Sound by mentoring our younger ringers. Both groups were directed by Andrea Laliberté with assistance from Melanie Chant and Merina Shulist.

Grace Notes played "Sorrow" on All Saints Day and both groups participated in the annual Christmas Bell concert. Both Note-Able Sound and Grace Notes contributed music to worship in December and on Christmas Eve at the 6:30 p.m. family service.

For more information, or to register for one of our Chimes groups, please contact Andrea Laliberté at 613-248-1283 or marcandrea@rogers.com. <mailto:dream@magma.ca>

Respectfully submitted,
Andrea Laliberté

Membership: Elizabeth Acquaah, Rev. Steve Clifton, Ruth Cooper, Dieudonné Detchou, Janet DiFrancesco, Bas Groeneweg, Allison Instance, Kristie Marr, Drew Presley, & Anne Marie Tessier.

The mandate of the Christian Development Committee is to take the lead in planning and developing programs and events to promote Christian development for people of all ages in the congregation.

One of our most important programs at Rideau Park is our **Sunday School**. Although our numbers have taken a slight dip, we can still boast an active and vibrant Sunday school with anywhere from 35 to 50 students. This can only happen with a great deal of help from a wide variety of people. We have approximately 30 volunteer leaders and helpers from our congregation teaching in 7 different classes. John Durkee (Treasurer) continues to watch over our finances, with the help of Sharon Bernard (Envelope Secretary), and of course, Paul Sorg always has our rooms ready for Sunday mornings.

We're now in year two of a new curriculum, "Seasons of the Spirit". This is a very popular curriculum in the United Church, and is lectionary based; therefore the children in Sunday school explore the same stories and scripture as the congregation in Church. Together with the imagination and energy of our talented teachers our children are not only entertained while their parents are in church, but also get a good basis in bible study.

This past year we instituted a policy of requiring our Sunday school staff to have police checks. This has become the normal standard for programs involving children, and although our program is still considered low risk, due to our open door policy, we none the less felt it important to recognize the changing standard in society. We cherish our volunteers in our Sunday school and we are very proud of our record, nevertheless we recognize the number of newcomers that come through our doors, and we will make every effort to assure them that Rideau Park is a safe, warm and welcoming place for all who enter.

In 2009, we celebrated the outstanding work of our Sunday school volunteers by awarding the Fifth Edition of the Carol Gardner Awards. Our very deserving recipients were Amy Neal and Colleen Durkee, both of whom taught the Grade 7/8 class. One need only look at the attendance figures to see that these two young ladies did something right, because without fail they had the biggest class, week in and week out.

This was the third year we offered the full day camp for **Vacation Bible School**, which was again run by the youth of Ottawa Presbytery. This version was called "The Amazing Grace" and ran the second week of August. This year's campers tended to be from younger ages, with approximately 40 children, mostly from outside our usual Rideau Park family. VBS has become an important outreach tool, our thanks to Steve for his leadership.

Besides our Sunday morning **Sunday School**, we provide a **High School Bible Study Group, Adult Bible Study Groups, Lenten Book Study and Confirmation Classes**.

As if Steve didn't have enough to do, this year he is one of several people examining how the greater church might better serve those people in the 19 – 35 age range. This initiative may take many forms and may also be interdenominational. One example of this work was the **Encarna** experience. We hope many of you were able to attend this spiritual event.

Steve would be the first to say that he is able to do so much because so many in the congregation are so willing to help. Often all we need to do is post another sign up sheet and before you know it we have a list of people or things which enable us to provide another list of programs like: **Holiday Boxes for Students Away from Home and the Carleton University Pause Table**.

The advent season is a particularly busy time for our committee. Besides some of the programs already mentioned, we also run the **Shoe Boxes for Harmony House** campaign. With this program we invite the congregation to fill a shoe box, which we provide along with some helpful gift ideas for the pertinent age group. The shoe boxes are then delivered to Harmony House, a second stage women's shelter assisting women and their children to make the transition from a life of fear and abuse to one of security and independence. This program is very capably led by Janet DiFrancesco and Ann Marie Tessier.

Once again Ruth Cooper led us through another **Advent Happening**. For the tenth year in a row we gathered together in Beecroft Hall to build gingerbread houses in preparation for the season of Advent. This year around 50 families braved the elements and the H1N1 virus to build 63 houses and enjoy each other's company. Many thanks to the tremendous team of volunteers who helped make icing and set up the hall for this wonderful "happening".

After the very popular **Rideau Park Children's Christmas Pageant**, it is our committee's job to provide a reception for all the participants. For the third straight year, we were very pleased to have Tamara Boisvert take on the role of event shepherd for the reception.

Six years ago a young girl, Olivia Dolbec, from our congregation was moved by the suffering in the Sudan, and decided that something must be done about it. This began "the **Children's Cards for Charity Project**" at Rideau Park. The children in our Sunday school do the artwork which are then turned into cards and sold to the congregation to benefit a charity. The driving force behind this project is Olivia's Mom, Janine Ewing Dolbec. Once again, this year's costs were kept to a minimum due to the efforts of John Durkee, who scanned all the cards, and Erin O'Neill, who printed them.

As one can see, the CD committee is made up of talented and dedicated members, and it is my privilege to act as the Chair. I want to thank them all for their hard work this past year, and I invite more of you to join us.

Respectfully submitted,
Drew Presley, Chair

High School age youth meet every Sunday night in the church parlour for Youth Bible Study (YBS). In the first part of 2009 YBS began a discussion of the TV show *Joan of Arcadia*, which looks at the life of a high school aged girl who encounters God in all sorts of ways as she goes through her day. This fall YBS began a study of the Book of Daniel which, with all its dreams and visions, is a challenging book to study. Scott Inrig and Wendy Hagglund gave leadership to YBS in the winter and spring. Wendy is now off to study for ministry at Queen's. Scott Inrig, after many years leading this group, has stepped back from this commitment for a time. Rev. Steve Clifton has been leading YBS since the fall.

On Sunday mornings our 12 and 13 year olds meet for class. Thanks to Steve Neal, Amy Neal and Colleen Durkee for their leadership in the first part of 2009. Owen Clifton, Chloée Detchou and Merina Shulist took over the class in the fall of 2009.

In the parlour on Sunday mornings, grade 9's are led through a year long survey of the Bible, from Genesis to Revelation. Amy Neal took over the leadership of this course this fall.

Rideau Park volunteers at the Carleton University Ecumenical Chaplaincy Pause Table in April and December, providing free food and friendly smiles to students during their exams. More than 700 students stop by the Pause Table in the spring and again in the winter exam period; the generosity of those who give food or time is really appreciated by the students.

Thanks to the work and the leadership of Andrew Hyde, our Presbytery Youth and Young Adult (YAYA) Minister, there are opportunities for our young people to be involved in Presbytery YAYA events. Young Adults are invited to gather on the last Sunday evening of each month for a meal at an event called the Open Table (www.theopentable.ca) at All Saints church in Sandy Hill; this is a joint Anglican/Lutheran/Presbyterian/ United Church venture. Twice each year, youth are invited to gather for *the Point*, a worship event for teenagers in the Ottawa Presbytery. Some of our youth have helped to lead and plan *the Point*; more than 100 young people attend the gatherings. Also, our Presbytery runs the Camp Awesome VBS program and several of our young people are involved in leading the program.

Our congregation is blessed with great young people who contribute much to our church's life. Youth make our annual VBS possible with their enthusiastic leadership. A number of our youth and young adults serve as Sunday School teachers through the Sunday School year. Projects like Advent Happening, the Church Picnic, Christmas Cheer and the Christmas Pageant engage our youth in the work of our congregation. They share musical gifts through Marcia Gosse's A'Pealing Sound hand bell choir. Our youth bless us with their gifts in many ways.

And we are grateful for all those who work with the youth of our congregation.

Respectfully submitted,
Rev. Steve Clifton

The mandate of the Pastoral Care Committee is to strengthen and promote the spiritual well-being of the entire congregation. This supplements the work of the staff and other committees by helping to foster a sense of church family, fellowship and belonging.

A particular function is to maintain contact with members who are unable to attend regularly because of physical or other problems. Other responsibilities of the committee include: overseeing the assignment of households into Elder districts, providing training to help Elders be prepared for their visits, welcoming newcomers, organizing the delivery of Easter lilies, sending cards to members of the congregation in recognition of special occasions or bereavement, sending cards to members of the Sunday School in celebration of birthdays and academic achievements, greeting at coffee time, staffing the Welcome Corner during coffee time, and organizing teams to serve funeral receptions.

Pastoral support for this committee is provided by the Reverend Georgina Fitzgerald. We are grateful to her for her support.

Respectfully submitted,
Judy Paré, Chair

The past year has again included many meaningful activities, all very indicative of our church's role in the larger community.

- Two members of the Ottawa Sikh Society spoke to a congregational breakfast meeting in January to explain their faith tradition to us.
- Dennis Gruending, who provided an excellent course of instruction in this past season's Lay School of Theology, spoke to the congregation on the very interesting topic of Faith and Public Life.
- Later in the season Raouf Omar, a Palestinian, and Claude Weil, an Israeli, spoke at a congregational evening meeting about their book "Light Behind the Darkness, Stories of Compassion from the Holy Land".
- ACORN – the ***Association for Community Organization for Reform Now*** attended one of our meetings this fall to explain their work in the community – all in support of the homeless and chronically poor. A current project is the *Living Wage Campaign*, which is an attempt to bring the minimum wage to \$13.50 per hour across the province.

Respectfully submitted,
Bas Groeneweg, Chair.

United For Peace

This is a Canada-wide project initiated by the United Church of Canada earlier this year, however it has fallen far short of expectations; in spite of setbacks the project will continue.

Christmas Cheer

Caroline Scollick chaired the Christmas Cheer program this year and provided very competent and enthusiastic leadership. As usual the congregation responded generously with financial contributions and just plain hard work.

Peace and Development

The Rev. Dr. Eloi Gunn was our guest speaker to lead in your Black History month earlier this year.

Sunday Fun – Banff Ave

This small group remains active under the capable leadership of Marion Atwell and Margaret Walsh.

Group For Friends

This is a fairly large group of physically and mentally challenged youth who meet frequently for social and entertainment activities under the leadership of Bill and Anne MacMillan.

Heron Emergency Food Centre

Frances Dawson and Kathy Mayes continue to be our volunteers and the centre gratefully accepts the many generous contributions from our congregation.

Banff Avenue Community House

These people are very grateful for the ongoing support from our congregation. All 115 of the housing units were renovated this year – wiring, plumbing, all interior work as well as new siding, windows and doors – have put these units in top condition and occupants now have first-class accommodation.

Blair Court Community House

Frances Dawson serves on the executive committee of this group. An active music program is underway, with volunteers from the community and our congregation providing leadership. This activity was initiated through a grant from the Rideau Park Foundation.

Wednesday Afternoon Bridge Club

The club is currently inactive, but anyone interested in restoring this event is most welcome to do so. The church parlour provides an excellent setting for this activity.

50+ Fitness

A group of seniors meet every Tuesday and Thursday morning to exercise at eight week intervals.

Thursday Euchre Club

This club meets on Thursday afternoons to play cards, get acquainted and enjoy refreshments.

Multi-Faith Housing

This project is functioning extremely well and is gaining widespread support and recognition. Our congregation has invested very substantially from the Rideau Park Foundation.

Harmony Club

This group meets on the last Wednesday of each month from 10:30 am to 2:00 pm (excepting June, July and August), cards and conversation precede a lunch made by volunteers. This is usually followed by a program of music or a guest speaker.

Alcoholics Anonymous

The Oasis Group of Alcoholics Anonymous has been sponsoring regular speaker meetings at our church for more than 30 years – year around, including holidays. Friends and families of alcoholics and anyone interested in learning about AA or alcoholism are welcome to attend any of the meetings. All participants at a speaker meeting agree to participate in advance as the speaker shares his or her experience, strength and hope. Others in attendance will not be expected to participate other than listening. Another style of AA meeting is a closed discussion group intended for alcoholics or others who believe that he or she may have a drinking problem and would like to listen and share experiences with the group. For information about the more than 150 meetings in the Ottawa area weekly, please call 613-237-6000.

Moms, Pops and Tots

Children and their parents/caregivers use the large Sunday School room for a variety of activities. These meet on Monday and Thursday mornings.

Wednesday Morning Children's Group

Pre-school age children meet with their parents/caregiver for children's activities and socializing.

Rideau Park Curling Club

A group of men and women from the congregation meet regularly at the RA Centre to enjoy a game of curling, and new members are always welcome, no experience is necessary.