

# Rideau Park United Church 2013 Annual Report



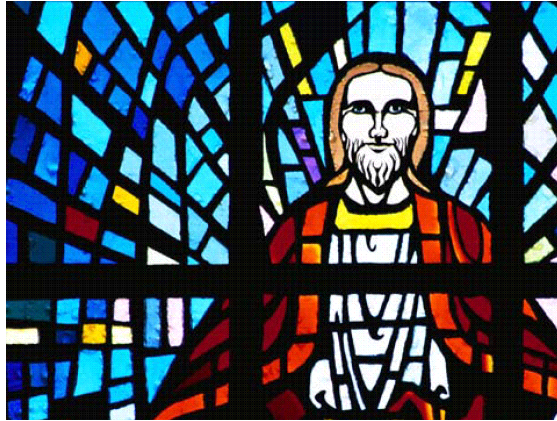
2203 Alta Vista Drive, Ottawa, Ontario K1H 7L9

613-733-3156

[rideaupark.ca](http://rideaupark.ca)

*In Memoriam*

*Members, Adherents and Friends of Rideau Park*



Ruth Andrews

Martha Mae Elliott Becker

Mary Dunsmore

Jewel Farrell

Dolores E. Gilmore

Shirley Gaffney Marks

David Wilson McDuffee

Mary Provost

Henry Conner Armstrong

Phyllis Jean Bradt

Catherine Ross Elliott

George Eric Findley

Marion Johannsen

Margaret Marr

Roselie (Rose) McKnight

Ethel Marion Warren

*I am the resurrection and the life. Those who believe in me, even though they die, will live, and everyone who lives and believes in me will never die.*

*John 11: 25, 26*

In Memoriam .....	Inside front cover
Contents.....	3
Leadership at Rideau Park .....	4
Journey of Faith .....	5
Mission Statement of Rideau Park United Church.....	6
In Memoriam Donations .....	6
Organization Chart of Governing Bodies.....	7
Statistics 2013 .....	7
Letter from the Staff.....	8
<b>Reports:</b>	
Council .....	9-11
A Congregation Growing in Spirituality .....	12-13
Council - Communications Task Group .....	13
Council - Congregational Development Task Group .....	14
Ottawa Presbytery .....	15-16
Session .....	17
Board of Trustees.....	18
Stewards .....	19-21
United Church Women.....	22-25
<b>Committees of Council:</b>	
Stewardship.....	26-27
Ministry and Personnel.....	28
Administrative .....	29
Nominations.....	30-32
<b>Committees of Session:</b>	
Worship and Music .....	33
Chimes/Teen Bells .....	34
Handbells .....	35
Christian Development .....	36-37
Youth and Young Adult Ministry.....	38-39
28 <sup>th</sup> Ottawa Scouts.....	40
Pastoral Care.....	41
Social Action and Outreach .....	42-43

<b>STAFF</b>	Rev. Steve Clifton Rev. Elizabeth Bryce Rev. Georgina Fitzgerald Richard Glasser Ian Bevell Debi Brown Kay Saunders (Maternity Leave) Judy Paré (Part Time) Sonya Sweeney (Part Time) Paul Sorg Steve Spidell (Part Time)	Minister of Christian Family and Worship Minister of Community and Worship Minister of Pastoral Care Director of Music (Jan. to April) Director of Music (Aug. to Dec.) Administrator Administrative Assistant (Sept - Dec.) Administrative Assistant (Jan. - Sept.) Administrative Assistant (Jan. - Jul.) Caretaker Caretaker (Jan. - Sept.)
<b>COUNCIL</b>	Mary Lynne Holton Alyce Dunnewold Lisa Sadler Christy Harris Judy Paré Maureen Stark Gaveen Cadotte Rod Hagglund Bob Roden Bob Rennie Brian Hamilton Marilyn Law Doug Robinson Gavin Currie Barbara Robinson Nancy McPherson Drew Presley Adam Kurz	Chair Vice-chair Secretary Chair of Session Session Representative Session Representative Chair of Stewards (on leave) Interim Chair of Stewards Treasurer, Stewards' Representative Stewards' Representative Chair of Stewardship Chair of Ministry and Personnel Ottawa Presbytery Representative Chair of Board of Trustees President of United Church Women Chair of Administrative Committee Member at Large Member at Large
	<b>COMMITTEES</b>	
<b>SESSION</b>	Christy Harris Nancy McPherson	Chair Clerk
<b>Sub-committees of Session</b>		
Christian Development	Elizabeth Acquah	Chair
Worship and Music	Shailja Verma, Kate Whitridge	Co-chairs
Social Action and Outreach	Sandra Weedmark	Chair
Pastoral Care	Christel Kurz	Chair
<b>STEWARDS</b>	Gaveen Cadotte Rod Hagglund	Chair (on leave 2013) Interim Chair
<b>Sub-committees of Stewards</b>		
Treasurer	Bob Roden	
Property	Rod Hagglund	
Counting Teams	Andrew Jeffrey	
Property Renewal	Brian Hamilton	
<b>STEWARDSHIP</b>	Brian Hamilton	Chair
<b>NOMINATIONS</b>	Judy Paré	Chair
<b>MINISTRY AND PERSONNEL</b>	Marilyn Law	Chair
<b>ADMINISTRATIVE</b>	Nancy McPherson	Chair
<b>BOARD OF TRUSTEES</b>	Gavin Currie	Chair
<b>UNITED CHURCH WOMEN</b>	Barbara Robinson	President
<b>PRESBYTERY REPRESENTATIVES</b>	Brian Irvine Doug Robinson	Don Melick Chris Inrig replaced by Sheila Faure
<b>ENVELOPE SECRETARY</b>	Barbara Jeffrey	

## Baptisms

Katherine Anna Bowles-Lareau	Serena Violet Geneva Cadotte
Jake Joseph Casey	Max Thomas Fredrick Casey
Addison Grace Christie	Diana Alexandra Dumouchel-Makela
August Andrew Tyler Fowkes	Juliet Camille Hallatt
Easton William Laperle	Lauren-Marie Steele McGraw
Benjamin Vincent Rivet	Adam Peter Saunders Scobie
Tori Daphne Seguin	Samuel Aaron Elliott Snow
Adelaide Mary Taylor	Walter Edward Todd
Liam Thomas David Walsh	Katelyn Ariel Young

## Transfers to Rideau Park

Sharon Gwynne-Vaughan  
Beryl McLaughlin  
Randolf and Diane Harrold  
Gordon and Louise Mundle

## Transfers from Rideau Park

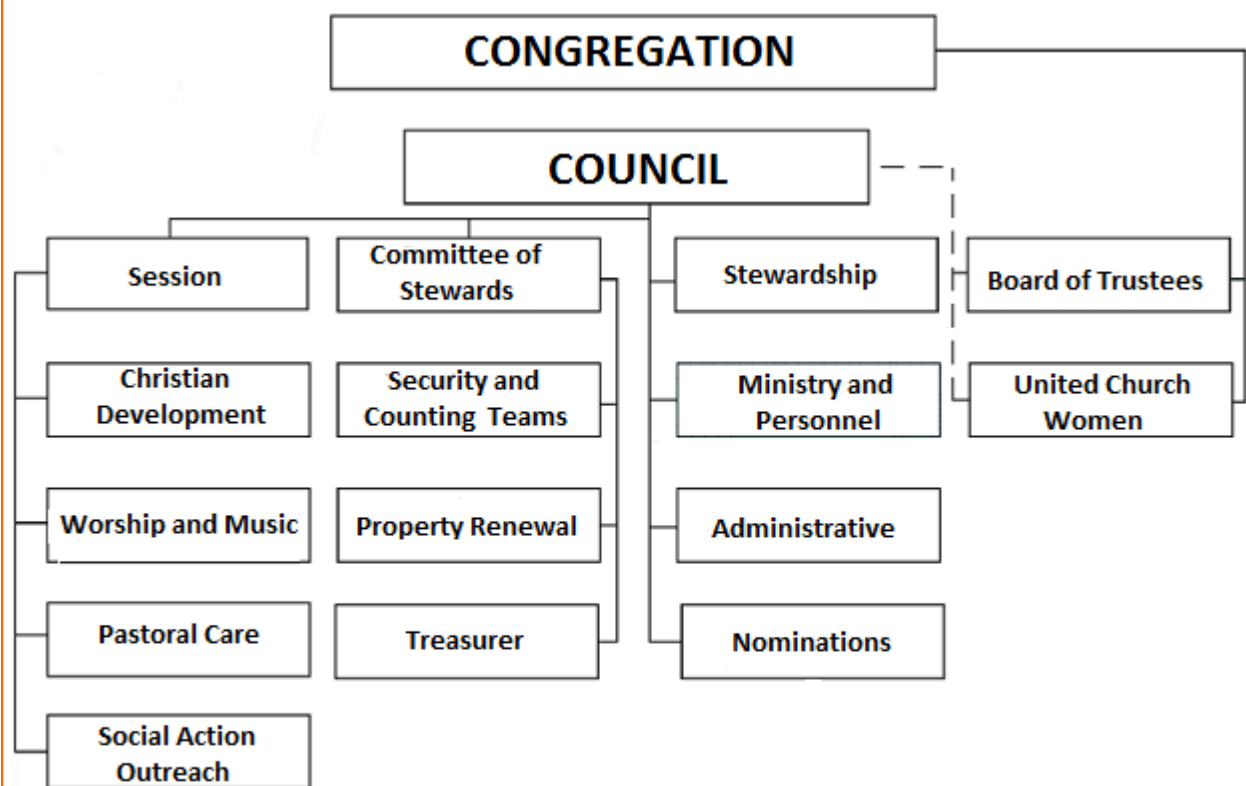
Brian and Merriane Crowell  
Karen Palmer

*Rideau Park United Church is a family of people who joyfully proclaim a loving God as revealed in Jesus Christ.*

*As caring members of this church, we seek to do this by:*

- ✠ joining together in worship, prayer and music;*
- ✠ reading and studying the Bible;*
- ✠ living a Christian life;*
- ✠ nurturing both young and old in Christian education programs;*
- ✠ seeking justice for everyone; and*
- ✠ continually sharing our faith, hope, talents and resources with our community, country and the world.*

Hank Armstrong  
Martha Becker  
Phyllis Bradt  
Jackie Berrow  
Catherine Elliott  
Marjorie and Eric Findley  
Jean Holliday  
Marion Johannsen  
Lillian Jones  
Wilson McDuffee  
Harris and Mary Mossman



Number of households as of December 31, 2013.....	517
Total number of persons as of December 31, 2013.....	1,161
Members received through Transfer of Certificate .....	2
Members removed through Transfer of Certificate .....	3
Persons removed by death.....	16
Number of weddings.....	9
Number of funerals .....	13

One of the great spiritual innovators in the Christian tradition is Ignatius of Loyola, a Spanish mystic who founded the Jesuit order. Ignatius asked the question often: "Do you think that all of Scripture has been written?" Do we think that sacred stories are about long, long ago, that they are all about what happened to someone else, that they are confined to the pages of our Bibles? Or do we think that the sacred story continues, is still unfolding, that God is active in the world now, that your life and mine are touched by God?

Do you think that all of Scripture has been written? Ignatius would say: "No!" the sacred story continues. Scripture continues to be written in our lives. Your story is sacred story too. God is still at work in your life and mine.

Every year we publish, in preparation for our annual meeting, our annual report - all churches do.

If you look at it quickly it might seem like an assembly of lists and numbers and facts - but, if we look more carefully, it tells a story - a sacred story. It records the story of how we have lived together this year. It records the sadness of loss as we remember those who have died this year. It speaks of the joy of new beginnings, of baptisms and weddings celebrated. It tells us stories about friendships, fellowship, and community: gathered in worship, in study, in prayer, in song, at meals. It speaks of commitment and dedication and hard work and accomplishment. It speaks of caring outreach to our community, to food banks and community houses, local schools, a nearby university, into seniors' homes and women's shelters. This annual report tells a story, a sacred story.

And it's a story that we need to share. A few years back, when Environics was doing research for the UCC's Emerging Spirit project, they asked people who do not attend church, why those who did attend were part of a church. And they didn't have a clue. Why are we here? Why is this important, life giving for us? What do we do here? What is our church doing that is good and gracious in our community, in our world? We have a story to tell. A wonderful, sacred story. Let's not keep it to ourselves.

And the story continues. What will happen next? What should be our next chapter? Where do we go with God from where we are in the story now?

This annual report shares a chapter of a sacred story, the story of our collective life in 2013. We have a story to tell. And the story isn't over yet.

Steve Ian  
Georgia Elizabeth  
Debi  
Paul Kay



Council has met seven times since the last report. The Council membership is as follows:

Chair	Mary Lynne Holton
Vice-chair	Alyce Dunnewold
Secretary	Lisa Sadler
Chair of Session	Christy Harris
Session Representatives	Judy Paré Maureen Stark
Chair of Stewards	Gaveen Cadotte (on leave 2013)
Interim Chair	Rod Hagglund (2013)
Steward Representatives	Bob Roden (Treasurer) Bob Rennie
Chair of Stewardship	Brian Hamilton
Chair of Ministry and Personnel	Marilyn Law
Ottawa Presbytery Representative	Doug Robinson
Chair of Trustees	Gavin Currie
President of UCW	Barbara Robinson
Chair of Administrative Committee	Nancy McPherson
Members at Large	Adam Kurz Drew Presley

*The ministers and the church administrator are ex-officio, non-voting members.*

According to our Constitution, Council is responsible for exercising leadership and management at a strategic level. The leadership function encompasses long range planning and defining congregational priorities, while the management function provides strategic guidance for the volunteer bodies, committees and church staff responsible for church ministries, programs and activities.

With respect to the longer term, Council and Stewards continued to commit to no deficit in the Ministry and Programs (M&P) Fund. It is through this fund that we support our church staff and volunteers to provide local ministry, worship, music, pastoral care, outreach, Christian education, and the many programs and activities which help us to serve God, each other, and our community.

Council and Stewards continued to support revenue generating initiatives, expenditure reduction actions and keeping the congregation informed about the finances of the church. Examples of these ongoing initiatives include:

- Increasing revenues through fundraisers, with portions directed to Worship, Christmas Cheer and the Property Renewal Fund. Initiatives included church dinners, RPUC Café, Foster's fruit and vegetable stand, and promotion of church facility rentals
- Reducing expenditures through actions such as individual Observer subscriptions, and Christmas Cheer coordination by church staff
- Focusing the message in the Stewardship Campaign on the needs of the Ministry and Programs Fund, and providing the option of giving to the Area of Greatest Need
- Holding a budget consultation at the Fall Congregational Meeting
- Placing more emphasis on communications, congregational development and welcoming to increase our presence in the community and attract new members

The Ministry and Programs (M&P) Fund recorded a modest surplus in 2013 for the second time in five years with the continued help of income from the Britt Fund and an increased contribution from the UCW. No money had to be transferred from the Reserve Fund in 2013 to help reduce the deficit. The challenge going forward will be to continue to balance the annual M&P budget, and to build and maintain a modest contingency amount in the M&P Fund.

To emphasize the importance of the strategic overview function of Council, an agenda item, "Council Discussion," was continued at some Council meetings. Topics covered were: Rideau Park's relationship with the wider United Church, the purpose driven church, the stewardship campaign, Council financial discussions and safe spaces initiatives at Rideau Park.

The policy for the Naming of Rooms or Major Spaces of the church on behalf or in memory of an individual was updated.

We wished Richard Glasser, our Director of Music for ten years, good bye and a happy, well deserved retirement.

On Volunteer Appreciation Sunday, the Congregation, recognized the 50<sup>th</sup> anniversary of the UCW and the contribution the UCW has made. Past and present presidents were recognized with a rose. Their names were recorded in the UCW Honour Roll Book, prepared by Lois Jensen.

Council hosted an Ottawa Presbytery meeting and dinner at Rideau Park for approximately 110 Presbytery representatives.

In May Rideau Park hosted a one day presbytery-wide workshop, "Creating Safe Spaces: Affirming LGBT Youth and Adults," which looked at how to make our faith community "safe" especially for the LGBT (lesbian, gay, bisexual and transgendered) community.

Council approved the hiring of a new Director of Music, Ian Bevell at its May meeting.

During June Rideau Park participated in the United Church Comprehensive Review Process. This facilitated conversation considered issues and challenges the church is facing and how the church can support vital United Church faith communities into the future.

Council's Communications Team and the Congregational Development Task Group continued their efforts to increase awareness in our local communities about Rideau Park church services, programs and events. Key highlights were the launching of the new RPUC website early in 2013 and the holding of the third annual community Rideau Park Open House in September.

In November, Council discussed and approved the formation of a small group of Rideau Park members, not on Council, to review and update our Constitution, committee structure and terms of reference documents by November 2014.

Regarding the congregation's decision to allow on a trial basis the serving of wine and beer at selected events within Rideau Park, there are currently six people who have obtained their Smart Serve Certification. There have been four different events held at Rideau Park since September where alcohol has been served.

Council continued the practice of recognizing the spiritual aspects of our activities. This is accomplished in part by having members lead the opening reflection at Council meetings.

In 2013, \$13,372 was available from the Rideau Park Foundation fund for congregational and outreach projects. The projects approved were:

- \$2,000 for a May presbytery-wide workshop hosted by Rideau Park, “Creating Safe Spaces: Affirming LGBT Youth and Adults”
- \$3,000 for the 28<sup>th</sup> Scouts who participated in a community development project in Chincha Alta, Peru, to help with infrastructure rebuilding that was heavily damaged in the 2007 magnitude 8 earthquake.
- \$6,000 for the Blair Court Homework Club to hire qualified staff.
- \$5,000 to purchase video webcasting equipment allowing Stewards to video webcast the Sunday services for a trial period of one year.

In addition a request was approved to provide \$500 from the Speakman Fund to assist Miriam Sherwin to attend a pilgrimage, “Destination Greenbelt” in the UK for church leaders under 40.

I would like to thank members of Council for their support during the past year. I would also like to say a big thank to those members who are leaving Council or changing their responsibilities: Rod Hagglund for filling in as Acting Chair of Stewards and Lisa Sadler for her hard work and support as Secretary of Council.

On behalf of Council, I would like to take this opportunity to say thank you to our church staff for all they do to make this congregation such a busy, caring and spiritual place and to the Council members for their enthusiasm and support. We are blessed to have such a committed group of people.

Respectfully submitted,  
Mary Lynne Holton, Chair

Martin Sable, a Capuchin monk defines spirituality in this way:

*“Spirituality is an endeavour... it is an ongoing endeavour. That is, spirituality is not something we eventually finish, like a job or a project. We attend to it, nurture it, refine it till the day we die. Like the biblical notion of conversion, spirituality is dynamic and never-ending. Its goal is growth in our relationship with God and one another”.*

Spirituality is a strong and vibrant thread that is woven through all that we do at Rideau Park. From Youth Bible Study to our outreach work, from choir practice to committee meetings, we are always seeking to be in communion with the Holy One and to help others to find that which will satisfy their souls and nourish their spirits.

In 2013 there were a number of events and activities that were directed at deepening the spiritual life that we share.

- Elizabeth led a number of book studies. She also started a monthly book discussion group.
- A spirituality retreat was held in the fall; about 12 adults gathered at Galilee in Arnprior for a time of fellowship, reflection and renewal.
- Through the year Sharon Sanderson offered a series of quiet days, a chance to retreat on a Saturday in our own church.
- Sharon, with Elizabeth’s help, has also begun offering monthly Contemplative Communion services on Sunday afternoons; these services have been very well received.
- Our weekly lectionary study, held every Wednesday morning, is a small gathering but the time is rich. You are always welcome to join in.

Annually, in the season of Lent, we try to place a special emphasis on spiritual growth. Meetings are cancelled in order to make room for Lenten reflection. This year our theme was “Thin Places”. In a variety of ways we explored the sacred spaces of our world and of our lives, those holy places where God is encountered.

- In Lent a group gathers on Saturday morning to share food, fellowship and study. This year’s book was *Noticing God* by Richard Peace. Peace writes of the "spiritual discipline of noticing God" which requires a certain level of awareness, a certain discipline of the heart. This book is an exploration of the places where people meet God: in mystical encounters, ordinary life, within our hearts, through other people, through Scripture, nature and the church.
- On Wednesday nights we met for midweek services and then had a group study session. This year we heard about holy places that members of our congregation had journeyed to: Israel - Peggy Rader; The Ancient land of Egypt – Doug Robertson; Iona – Elizabeth Bryce; Ireland – Steve Clifton and Keva McKennirey.
- One Wednesday night was set aside for a worship installation, Encarna, which helped people to explore the Holy Ground or Thin Places of their own experience.
- Our Spirituality Project encouraged people to write about a place that is sacred to them, somewhere where they encounter the Holy.

It is worth noting that most of our studies go online. If a session is missed or if someone cannot get out to participate, most of our Bible, book and topical studies have a written component posted on or linked to our church website. It’s almost like being there.

We also have a congregational prayer chain. The prayer chain is a place to bring concerns in confidence so that others in our faith community can pray for us and those we love. If you would like to join the chain, please speak to our coordinator, Doreen Hamilton.

We have plans for some new initiatives in 2014. We look forward to another year of growing in the Spirit.

Blessings,  
Reverend Steve Clifton

The Communications team is a group of individuals (not a formal committee) who perform, support or facilitate a broad communication role in RPUC. Through the efforts and commitment of Communications Team members, a monthly e-mail continues to be sent out to the congregation informing of upcoming events or developments; Church Post published four times a year; advertisements, and sometimes stories, about RPUC events placed in local/community newspapers. The new RPUC website has been up and running for about a year and feedback on it continues to be welcome. In 2013, we developed an internal electronic process for notification of deaths of members of the congregation and related funeral arrangements, in order to ensure that Elders and others receive the information in a timely manner. We continue to look for ways to facilitate increased communication about the life and work of RPUC. You can help by ensuring that the RPUC Administrator, Debi Brown, has your e-mail address.

Respectfully submitted,  
Alyce Dunnewold

What do New Year Resolutions, Family Day, Soul Food, Easter, Saving You a Seat, Open House, Optimal Development, Faith Filling Station and Christmas all have in common? All were themes in our 2013 half-page Vistas ads that focused on extending the invitation to individuals and families in our neighbourhood, to join us here at Rideau Park United Church.

Rideau Park has so much to offer in terms of faith, spirituality and nurturing, programs and staff, use of talents, opportunities to serve, sense of purpose, community, fellowship and inclusiveness. Our premise continues to be that increased awareness of these many blessings can result in increased participation as well.

The Amazing Alta Vista Garage Sale was another opportunity we used to reach out to the community as we opened up the doors to the sanctuary so that visitors could see what the church looked like on the inside and ask questions of task group members.

An Open House was held in September and a number of new families that attended the event have since made return visits. Moving the program tables into the same room as the food tables proved to be a good enhancement, providing both current and potential church attendees with better access to information about a host of church activities.

Thanks to Wayne Bond, Steve Clifton, Brian Hamilton, Mary Lynne Holton, Marilyn Law, Drew Presley and Lisa Sadler for their support and participation in Congregational Development in 2013. Each and every member of the congregation can lend their support by being welcoming/inclusive with visitors to the church and with those who we may not know very well. We can also extend a personal invitation to friends, neighbours and family to come and see what Rideau Park is all about.

Respectfully submitted,  
Greig Scott, Chair

Rideau Park's Presbytery representatives and their committee involvement in 2013 are as follows:

Elizabeth Bryce (Ministry in French (MIF), Steve Clifton (Chair, Youth and Young Adult (YAYA), Georgina Fitzgerald (Pastoral Care and Oversight), Chris Inrig (Co-chair, Pastoral Care and Oversight), Brian Irvine (Finance), Karen Lamb (Pastoral Care and Oversight) and Don Melick (Finance and Joint Office User Committees). During the year Chris Inrig resigned. Karen Lamb resigned and has been replaced by Doug Robinson who has become a member of the Chaplaincy committee. We thank both Chris and Karen for their excellent contributions to Ottawa Presbytery over the years.

Many issues were discussed and decisions made during a very busy year for Ottawa Presbytery. Highlights of the ten meetings held in 2013 are listed below.

At the January meeting, held at Woodroffe United, the Chaplaincy committee shared information about the lay visitation teams at the local hospitals. At the February meeting at Glen Cairn United there was discussion of the proposal from Knox, Nepean regarding the United Church position on Israel and Palestine.

The learning component for the March meeting held at Orleans United dealt with "End of Life Issues". The guest speaker was Dr. Thomas Foreman, who is currently the Director of Ethics at The Ottawa Hospital. He specializes in End of Life Care issues and the intersection between Faith and Ethics. It was an excellent presentation about end of life issues that face individuals and their support networks. On November 26th, Dr. Foreman came to Rideau Park where his excellent presentation was very well attended.

At the April meeting held at MacKay United there was consideration given as to comments to be included in forwarding the Proposal from Knox, Nepean to the next level of the church (Montreal and Ottawa Conference). Background comments relating to the proposal will go forward with the note that the presbytery has concerns about some of the content.

Approval was given to a proposal requesting that the prayers in parliament include an acknowledgment of Aboriginal Peoples. The Presbytery agreed to accept a new organizational structure for the Executive of the presbytery with an implementation timeframe of a year.

Wesley United Church amalgamated with the Emmanuel Pastoral Charge and the present ministry personnel at Emmanuel, Rev. Peter Loughheed and Christine Williams, Lay Minister, will continue in their ministry positions with the newly amalgamated Emmanuel Pastoral Charge. Judy Lawson resigned as Office Administrator for Ottawa Presbytery in June and will be missed.

The May meeting was held at Rideau Park and Comprehensive Review facilitators led a discussion about the future of the United Church.

There was a rare June meeting of Ottawa Presbytery on June 11th at Riverside United with, particular focus on two items: making a decision regarding becoming an Affirming Ministry and making a decision regarding the proposals coming forth from West Quebec concerning the West Quebec Collective model. The Presbytery approved both.

The September meeting of Ottawa Presbytery was held at City View United Church. Wendy Mather was introduced as the new administrative assistant for the presbytery. Among her duties she will also take the minutes of Presbytery meetings and prepare the Summary of each Presbytery meeting which is circulated widely. Trisha Elliott, the new chair of Presbytery shared her reflections about the theme for the year, "Change Happens".

Youth and Young Adult Minister, Hilary Merritt, introduced four of the seven young adults who visited Zambia in May 2013. They shared reflections about their visit and reported that the experience changed their perspectives on faith and the world. Hilary informed us that the group is willing to visit congregations and make a presentation about the trip to Zambia. Hilary also announced that there will be another exciting opportunity for youth during the March break to engage in an exchange with youth from Haida Gwaii (Queen Charlotte Islands). Watch for details or contact Hilary for more information.

At the October meeting at Manotick United the Try, Try, Try Again trophy was introduced with the invitation for people to think about things that failed and what they had learned from their failure.

The November meeting was held at Parkdale United. This meeting was a modified program meeting with limited business. The business agenda focused on the financial life of Presbytery. The 2014 proposed budget was then presented and approved, along with the assessments to the pastoral charges. The program part of the meeting was focused on "mission strategy" within the Presbytery. The presentation began with the Presbytery Minister, Lillian Roberts, outlining some of the challenges and questions that are part of the discussions between pastoral charges and Presbytery.

Emmanuel United hosted the December meeting at which the decision to become an Affirming Ministry was formally celebrated with special worship and the presence of Affirm United and the choir, Tone Cluster.

Faith and Arts Ottawa has almost completed two years of ministry. It continues to build relationships with art groups and has entered into a partnership with All Saints Anglican Church in Sandy Hill.

Respectfully submitted,  
Doug Robinson, Presbytery Representative



Session meets quarterly to hear from its four committees and to discuss issues relative to the spiritual interests at Rideau Park. Worship and Music, Social Action and Outreach, Pastoral Care and Christian Development each present to Session as needed. As well, Session notes congregational updates in the baptismal, marriage and funeral rolls.

This year a Search Committee for the Director of Music, established under the direction of the Ministry and Personnel Committee, fulfilled its purpose in a thorough search process with the selection and hiring of Ian Bevell on August 21st. Members of Session participated on the selection committee.

At the Session meetings over this past year, the Elders engaged in discussions and offered feedback on proposals including video-webcasting of the Sunday services, serving alcohol on the church property and LGBT safe-spaces; were presented topics to consider including a response to the UCC AGM decision on the Israel-Palestine issue, peace initiatives for the Lenten and Advent seasons such as the "Thin Places" project as well as peace initiatives within the community. To the regular Session agenda was added a Head Usher's report to hear from and inform the Elders of any logistical issues around the operations of Sunday worship.

Thank you to Doug Robinson for his leadership and guidance as Chair of Session. His three-year term was completed this year. It was also a pleasure to work with Nancy McPherson who fulfilled a one-year term as Clerk of Session. We are grateful for Jessie Weldon Gibb's continuing administration of the Elder lists ensuring effective outreach of the congregation whether by visits, phone or email.

Respectfully submitted,  
Christy Harris, Chair

The Trustees, on behalf of the congregation, hold title to the deed of the church property, and are responsible for ensuring such property is adequately maintained and used in accordance with the objectives of the United Church of Canada. In addition, the Board administers a number of funds established at Rideau Park under the direction of the Rideau Park Council and/or its committees.

Revenues of these funds derived from donations and the subsequent investment earnings are as follows:

The **Douglas Brown Memorial Fund** is used to support social activities for the physically and mentally challenged.

The **Rideau Park Foundation Fund** has been established to serve as a permanent source of supplementary funding for special needs at the church. This was the sixth year that money from this fund has been eligible for disbursement. Half the donations to the fund in 2013 combined with investment earnings make \$38,817 eligible for disbursement in 2014.

Investment earnings from the **Dora Helmkey Legacy Fund** are turned over to the Committee of Stewards for use at its discretion.

The **Karl Rasmussen Fund** is used to assist people undertaking full-time studies directed towards full-time service in the Christian Church. Only income earned in a given year may be used for this purpose. Income becomes part of capital if not used in the current accounting period.

The **Reserve Fund** was established in 2010. It was established with funds received from the Hancock Estate and a small portion of the annual receipts from the Britt Estate. This year \$1,500 of the Britt Estate funds were made available for the Reserve Fund. The total investment in this fund now amounts to \$176,213. The investment earnings from this fund and the principal, if necessary, are available for Council to deploy as circumstances warrant.

**Income from the Britt Estate** is used, as Council deems appropriate. This year \$15,000 was received and Council decided that 10% of this income and 10% of the 2014 funding from this estate will be added to the Reserve Fund.

Members of the Board: Gavin Currie (Chair), Ed Boothe, Norm Edwards, Bob Elliott, Murray Ferguson, Bas Groeneweg, Daryl Lindberg, Les MacLauchlan, Jacqueline Newton, Susan Vaughan, Keith Harris and Rev. Elizabeth Bryce ex-officio.

Respectfully submitted,  
Keith Harris

The Committee of Stewards is responsible for the management of church temporal and financial affairs. In 2013 the Committee met monthly, except for February, March, July, and August. The Committee members were:

<b>Chair</b>	Gaveen Cadotte (On leave 2013)	
<b>Acting Chair 2013</b>	Rod Hagglund	
<b>Secretary</b>	John Durkee	
<b>Treasurer</b>	Bob Roden	
<b>Administration Technical Support</b>	Don Ford	
<b>Counting Teams</b>	Andrew Jeffrey	
<b>Property</b>	Rod Hagglund	
<b>Representative on Council</b>	Bob Rennie	
<b>Security</b>	Robert Blake <sup>1</sup>	
<b>Stewardship Liaison/Property Renewal Fund</b>	Brian Hamilton	
<b>United Church Women Representative</b>	Mary Harris	
<b>Members at Large</b>	John Blackmore	Mark Inman
	Bill Ott	Steve Shipley
	Tony Bernard	
<b>Staff Liaison</b>	Debi Brown ( <i>ex officio</i> )	

<sup>1</sup> *Non-member of Stewards*

### The Committee of Stewards

- Part of the reason that Rideau Park has been able to move from marginal deficits to marginal surpluses has been an increase in facilities rentals, including the recent and successful partnership with Foster Farms. The extra work efforts of staff and volunteers to support the increased activity should not be overlooked. Special thanks to John Durkee, Steve Shipley, Debi Brown, Marilyn Law, Brian and Doreen Hamilton who have handled the bulk of the duties as Event Hosts. More volunteers would be appreciated and training is provided. However, it must be understood that this a limited revenue source compared to congregational givings on which we must continue to depend.
- As agreed by the congregation, the serving of alcoholic beverages at some events commenced in 2013, as part of a two-year trial period. Our thanks go to the committee who worked on the development of guidelines for Council's approval, and to the staff and volunteers who have obtained Smart Serve qualification and made themselves available to serve and monitor event activities. These include: Steve Shipley, Diane and Randolph Harrold, Karen Humphries, Bob Roden, Brenda Beauchamp, and Debi Brown,
- The changes to counting procedures implemented in 2012 on a trial basis have proven successful and have been confirmed as an ongoing practice. The changes reflect the reduced overall counting workload resulting from the continued shift to PAR givings. Thanks to the many volunteers who participated in our counting teams over the years, and to those who continue to volunteer their time in support of the streamlined process.
- The special efforts of Brian Hamilton in leading both the Stewardship committee in fundraising, and Property Renewal in spearheading so many projects that continue to maintain and improve the quality of our facilities, should be recognized.

**Finance:** Although 2013 was another challenging year financially, we were able to end the year with a small surplus in the Ministries and Programs Fund and meet the congregation's planned commitment to Mission and Service. The positive response to our year-end appeal to the

congregation is gratefully acknowledged, and the Stewards are equally grateful for all of the support provided throughout the year by individuals and groups within the congregation, and by staff members. In particular, the outstanding contributions of the UCW continue to be vital to Rideau Park's ability to provide the services needed by the church and the greater community.

**Rideau Park Property Renewal Fund** In 2013 many property renewal initiatives were completed:

- refurbished the Music Director's office including installing moldings, carpet, desk, storage unit, bookcase, table and chair as well as painting the office and cupboards for the bells and chimes;
- installed seven new bookcases in the Library;
- \*painted Beecroft Hall and repaired and painted Brackenridge Hall;
- \*repaired water damage and repainted both Georgina's office and the Cunningham entrance;
- \*stripped and waxed all the terrazzo floors as well as the floor in Beecroft Hall;
- upgraded the back gate, fence and light post and repurposed the old gate for the rear lane;
- created additional storage - under the Beecroft stage by building six storage carts, in the elevator room and women's washroom by adding separation walls;
- replaced a furnace valve and installed Sanctuary and Library digital thermostats;
- replaced both the gas and electric hot water tanks and changed the church hot water circulation plumbing to eliminate the long standing (many, many years) problem of sporadic hot water, particularly in the Beecroft kitchen. The results are wonderful!

*\* Thanks to the industrious efforts of Paul Sorg and Steve Spidell*

This work has been funded by Property Renewal Fund pledges and fundraising initiatives, plus a grant from the Rideau Park Foundation. Fundraising initiatives in support of the fund included five church dinners, the Amazing Alta Vista Garage Sale and the Rideau Park Café.

In December we heard from officials at the HRSD Enabling Accessibility Fund that **Rideau Park's October 2012 application for a Small Project Grant was under serious consideration**. We are encouraged that we may well receive the \$48,000 grant allowing us to install a number of automatic door openers and renovate and make accessible the downstairs washrooms.

A Rideau Park Foundation Grant of \$5,000 has purchased a broadcasting kit - camera and encoder allowing us to webcast/transmit a video and audio feed of Sunday services and other events over the internet. We have been experimenting with this equipment for some months and the results have been encouraging. The service webcasts have been seen by members as far away as Hawaii, California, and Vancouver. The video transmission is of a high quality and the audio of the participants in the service is good. As with the audio feed over the internet that has been in place for many years there will be opportunities to improve upon the choral and music audio. The feedback from transmission of this year's Christmas Pageant was very positive. Over 45 households joined us from Boca Raton, PEI, Halifax, Toronto, Cornwall and across the city. The potential to keep our congregation in touch with our worship services and increase the reach of our church community is to be welcomed. The Sunday services can be found by entering the following URL in your web browser <http://rideaupark.canwebcast.net/live> Save this as a Favourite or on your Desktop and join us when you can't come to the service or are away from home. In addition to your computer, it works well on portable devices with internet connections - an iPhone, iPad or similar device.

**A need to reroof the church flat roofs was identified** In late October we replaced the flat roof over the Cunningham entrance to the Sanctuary after experiencing water damage to the exterior of the building, the Pastoral Care Minister's office and the Cunningham entrance. It was 26 years ago (1987) that we last renewed the church flat roofs. A good serviceable roof over our heads is central to who we are as a vibrant community of faith in the Alta Vista area. In November our contractor,

saturated with water and only the vapour barrier and original roofing layer is protecting us from water damage. The roofs have reached the end of their serviceable life. While the plan was to wait until next spring, Stewards decided to advance the replacement of the remaining flat roofs by 6 to 8 months, thereby avoiding potentially costly water damage this winter. The largest flat roof over the Parlour and church offices was completed just before the winter freeze-up. Combined cost for these two projects was \$37,000 plus HST. In the early spring of 2014 we will complete the reroofing of the remaining three flat roofs at an additional cost of \$20,000 plus HST.

**One of our 2014 challenges is to pay for the roofs.** By adjusting our priorities at the end of 2013 and allocating \$7,000 to the Property Renewal Fund from the Area of Greatest Need contributions we have been able to largely cover the costs of the flat roof over the Cunningham entrance – approximately \$11,000. To cover the remaining \$28,000 from a cash flow perspective, Stewards is using funds from the Trustee's Reserve Fund that will be fully paid back once we have completed our fundraising in 2014. Plans to raise the funds include:

- A February fundraising letter to solicit the congregation's support for this necessary work is planned.
- An application to the Rideau Park Foundation for \$16,000 is planned for early March.
- \$20,000 from the 2014 – Year 3 Long Range Property Renewal Plan has been identified to cover this spring's replacement of the remaining three flat roofs.

It is important that we involve the entire congregation in this renewal project. The work requires the commitment of not just a few but the many who participate in our community. The 2014 Property Renewal Plan, a report on capital property improvements and expenditures outlines our plans for the year ahead and can be found on page 29 of this report. The fundraising objectives in the plan are achievable.

***We will need your support and encouragement. All members of the congregation are asked to consider their financial support for renewing our property. Together a great deal can be accomplished. Thank you for your consideration.***

**Acknowledgments:** Several congregational members who are not Stewards, contributed extensive time and talent to the work of the Committee of Stewards and the Stewards wish to convey their appreciation for these contributions:

**Barbara Jeffrey**, our Envelope Secretary;  
**all those** who worked to make our Stewardship Campaign such a success this year, especially our co-chairs Michael and Candice Presley and their family;  
**all the Duty Officers**, who are coordinated by **Robert Blake** and  
**the UCW**, which again contributed to the financial health of the congregation and the Mission and Service.

I would also like to convey the Stewards' ongoing gratitude and appreciation to our church staff. We are especially happy that Paul Sorg has resumed his full duties as custodian, maintaining the property and assisting with setup and take down for many church activities, making the physical facilities one of our greatest assets for our members and our local community. We would also like to make special mention of Debi Brown, our Administrator, who maintains the financial records and looks after the day to day financial transactions making our job as Stewards much easier, who acts as staff liaison to Stewards and who has also taken on increased responsibilities in counting with volunteers, and in coordinating and supervising rental activities and events.

Respectfully submitted,  
Rod Hagglund, Acting Chair, 2013

The purpose of the United Church Women is to unite all women of the congregation for the total mission of the church and to provide a medium through which they may express their loyalty and devotion to Jesus Christ in Christian witness, study, fellowship and service.

**TOTAL MEMBERSHIP** 111  
**Life Memberships\*** 54  
**Circle Group** 6

\*New Life Memberships: Doreen Hamilton and Heather Ingrams

**In Memoriam:** Ruth Andrews, Martha Becker, Jacqueline Berrow, Julie Bisson, Phyllis Bradt, Catherine Ross Elliott, Jean Marion Holliday, Lillian Louise Jones, Rose McKnight, Marion "Bunny" Warren.

### 2013 EXECUTIVE:

Honorary Presidents	Rev. Elizabeth Bryce, Keva McKennirey
Past President	Barbara Robinson
President	Beverly Lee/Barbara Robinson
Vice President	Heather Ingrams
Recording Secretary	Marcla Eastwood
Asst. Recording Secretary	Norine Wolfe
Treasurer	Marcia Gosse**
Archives, Literature, Communication	Kay Irvine – Now Vacant
Bazaar Convenor	Nancy Begg Durkee
Community, Friendship, Visiting	Karin Ott
Finance and Mission	Mabel Bannerman
Flowers	Marcia Gosse
Membership	Marg Sturley
Nominations	Lynda Coombe
Quilting	Ruth Ebertz
Social Functions	Vacant
Supply and Welfare	Lynda Coombe
Steward Representative	Mary Harris
Council of Women Representative	Joyce Ireland**
Presbyterial Representative	Ruth Stockley

\*\*Non members of UCW

### Unit leaders:

Unit 1 Phyllis Bradt	Unit 6 Grace Shaver
Unit 2 Mabel Bannerman	Unit 7 Lynda Coombe
Unit 3 Nancy Begg Durkee	Unit 10 Jessie Weldon Gibb
Circle Contacts: Doreen Hamilton and Janette Hamilton Silcoff	

### Executive Happenings and Responsibilities:

**President:** Chaired 9 Executive meetings and 3 General Meetings; Organized UCW Sunday. Attended Council meetings and reported on the work of our UCW and future plans and events.

**Past President:** Organized the World Day of Prayer Service. This was an Ecumenical Service in which representatives from every church took part. Participated in UCW Sunday and presentation of life memberships. Barbara hosted a very successful Presbyterial Fellowship Day at RPUC.

**Corresponding Secretary:** Sends and receives cards to and from people concerning sympathy, get well, congratulations and thank you for flowers, lilies and cards etc. Eleven cards were sent out and 17 cards were received.

**Treasurer:** Thank you, Marcia.

**Convenor Reports:**

**Archives/Literature/Communication:** One new addition to the library "Reflections, Stories and Anecdotes (50 years of the UCW)"

**Bazaar:** Nancy Begg Durkee convened another very successful Bazaar. It just gets bigger and better every year. A huge thank you to everyone who participated.

**Community/Friendship:** Karin welcomes and records those who were baptized, confirmed or transferred to RPUC. Sixteen babies were baptized – 7 boys and 9 girls. The parents of newly baptized babies receive booklets. A new booklet was chosen this year. The mothers receive the UCW pamphlet. Four ladies and two gentlemen joined Rideau Park by transfer of Membership. Thank you to those who filled in when Karin was absent.

**Finance and Mission:** The UCW supports a total of 26 charities and community services. 40% of year end funds go to Mission and Service and 60% goes to Rideau Park Ministries and Programs Fund. This year \$9,750 was sent to Mission and Service. There were no major purchases. Several small appliances including a coffee urn, coffee pots, hand mixer, and an electric knife were purchased. There was an expenditure of \$1,500 from our Memorial Fund to Social Action and Outreach to be distributed to homework clubs in the community centres in the area. A special thanks to Mabel for her many years as Finance Chair. Estimated total receipts: \$32,050. Estimated total expenditures: \$23,070. Lisa Sadler will take over Finances in 2014. Many thanks to our Treasurer, Marcia Gosse, who most efficiently looks after our finances.

**Flowers:** The UCW provides flowers for the sanctuary each Sunday as well as the lilies at Easter and poinsettias at Christmas. Thank you to those who delivered flowers. Recipients are those who are ill, grieving, or celebrating a special occasion.

**Nominations:** The position for Archives and Literature remains vacant. Thank you to Kay Irvine for her many dedicated years. Marcla Eastwood resigned as Recording Secretary after 11 years. Judy Paré will replace her. Norine Wolfe has resigned as Assistant Recording Secretary. Jessie Weldon Gibb will replace her.

**Quilting:** Busy ladies! Over 20 baby quilts and several large ones have been made.

**Supply and Welfare:** The congregation is recycling and we thank you. Keep saving eye glasses, which go to world eye clinics, postage stamps for Canadian Guide dogs. These stamps are sorted, trimmed, and put into categories by a group of volunteer ladies. They are then sold to a stamp collector as a fundraiser. Campbell soup labels are taken to Adrienne Clarkson School which is given money by Campbells to purchase computers. Pop can tabs are delivered by Barry Dewis to Clifford Bowey Community Centre. A special thank you to the knitters of the congregation for knitting and donating 42 pairs of mittens, 41 toques, 9 helmets, 16 scarves and 1 tam. These items are then delivered to Heatherington, Ledbury and Banff Community Centres by Harold Black.

**Council of Women:** The Council of Women (OCW) is an affiliation of women's organizations whose aims are to identify emerging social problems affecting women and their families and to educate the members about these issues. The Social Welfare and the Health sub-committees meet to study these issues more intensively, enabling members to prepare for discussion and voting on resolutions at the National and Provincial Councils of Women. Anyone may attend. The meetings were held at RPUC.

**Stewards Representative:** Mary keeps us abreast of new projects for RPUC and reports on projects we have undertaken and the proceeds made.

**Unit Reports:** There are 6 units. Each Unit has a monthly meeting usually involving a program with film, video, guest speaker or a topic for discussion. A time of devotion is also an important part of the meeting.

**Unit 1** – Makes jams and jellies for the bazaar. The unit feels it will no longer be able to fulfill its duties as a unit but individuals contribute as able.

**Unit 2** - Hosts the Valentine Coffee Party and Bake Table. Holds the Book Sale in the spring. Manages the Deli table for the Bazaar which entails 6 work parties making turkey and meat pies and pizzas. (It seems we just can't make enough!) Thank you to those from the congregation who have helped, in particular, Steve Shipley and Jim Ebertz who man the pastry press.

**Unit 3** - Holds the Spring and Fall Nearly New Sales which continue to draw customers from the community and provide a good outreach service. Unsold clothes, in good condition, left from the Nearly New sales are given to the Salvation Army or to "Dress for Success". They also have a frozen apple pie sale and the Bake Table at the Bazaar. This year they hosted the Presbyterial luncheon.

**Unit 6** - Contributes to and manages the Craft Table for the Bazaar.

**Unit 7** - Prepares baskets for the Bazaar and has a Spring Bake Sale. They held another very enjoyable Trivia Night, Fashion Show and catered for the Curling Banquet.

**Unit 10** - Manages the Lady's Boutique at the Bazaar and caters to some Harmony Club luncheons.

**Circle Group** – Holds a monthly book study. In the spring of 2013 they began studying "The Power of Now" by Eckhart Tolle.

**Samples of Programs:** (2012 and 2013) Rev. Elizabeth Bryce's experiences at Iona Community in Scotland, a program about Prayer Shawls, the history of Valentine symbols, travels to France, a living biography of a member's life and career, the work of the Social Action and Outreach Committee, Bible Quiz, old records of the Unit and past bazaars, remembering church women, "Ordinary Heroes" book, Travel Logs of Egypt and Northern Canada, film of conditions in Rwanda, discussions of articles in Mandate, and of monthly reflections from our Ministers. Guest speakers: Christy Harris talking about a trip to China with the National Arts Centre Orchestra, Joyce Ireland on the National Council of Women, Frances Dawson about the work done at Blair Court and Kim Matte, a Personal Fitness Instructor.

**Church Involvement:** Council, Stewards, Elders, Worship, church website, Choir, Pastoral Care/ Visiting, Harmony Club, Bridge, Funeral Receptions, Bible Study.

**Community Involvement:** Hospital Auxiliaries, teaching crafts at Abbotsford House, National Art Gallery, PEO, Canvassing, Maycourt, Alta Vista garage sale, volunteer with young developmentally disabled adults, Margaret Morris exercises.

The annual Fall Stewardship Campaign secures Rideau Park's financial needs for the year ahead objectives were identified from the 2013 Budget established at last year's Annual Congregational Meeting as well as discussions at Stewards and Council.

The Stewardship Campaign at Rideau Park has always been blessed by the strong leadership from within our congregation. This year was no exception with Candice and Michael Presley graciously accepting to Co-chair the 2014 Stewardship Campaign.



We are blessed with outstanding people who contribute so generously of their time, energy, and talents, to enrich the lives of those of our congregation, staff and community.

Thank you to the members of the congregation who helped with our major fundraising events: the Book Sale, turkey pie making, Nearly New Sales and last, but not least, the bazaar!

The UCW would also like to take this opportunity to express our appreciation to Rev. Elizabeth Bryce, Rev. Steve Clifton and Rev. Georgina Fitzgerald for their support, and thank you to the staff, Debi, Kay, Sonya and Judy Paré, Paul and Lorraine Sorg, for their support and for helping in so many ways.

Respectfully submitted,  
Marcla Eastwood, Recording Secretary

The annual Fall Stewardship Campaign secures Rideau Park's financial needs for the year ahead and identifies the congregation's time and talents commitments. The campaign's financial objectives were identified from the 2013 Budget established at last year's Annual Congregational Meeting as well as discussions at Stewards and Council.

The Stewardship Campaign at Rideau Park has always been blessed by the strong leadership from within our congregation. This year was no exception with Candice and Michael Presley graciously accepting to Co-chair the 2014 Stewardship Campaign.

The campaign theme "**Stewards of God's Grace**" is described in 1 Peter 4:10.

***<sup>10</sup> As each has received a gift, employ it for one another, as good stewards of God's varied grace***

In their letter to the congregation Candice and Michael expanded upon the theme:

*"... we have received many gifts from Christ's teachings and from our involvement in this congregation. It also notes that these gifts are to be shared with others, to use them to serve one another, as stewards of God's varied grace". This passage asks us "to invest time and resources not just for our own benefit, but for others who are not part of the day to day life of our congregation but who could also benefit from the difference Rideau Park could make in their lives."*

*We know that we are part of something very special here. We are part of a dynamic and vital community of faith and that its future is filled with promise.*

Their request to strengthen and sustain this wonderful place was well received by the congregation. We thank them for their commitment of time and energy in ensuring the success of this year's campaign.

Rideau Park's Campaign Co-chairs and Stewardship Chair are grateful for: Debi Brown's expertise on the campaign data requirements and the tracking of its progress; Kay Saunders for sharing her office, computer, colour printer and photocopier; Marilyn Law and Doreen for making up the stewardship packages; the wonderful cake servers; and to Barbara Jeffrey for recording the new pledges in the system.

**Stewardship Analysis:** For 2014 we received 304 pledges from 517 households for a total of \$562,308 which is .08% less than last year. Of these, 241 (79%) honour their pledges through preauthorized remittances (PAR) via their banking institutions. We receive \$468,212 (83%) of our pledged contributions by PAR. Each week when the collection plates are passed they are weighed down with \$9,000 of PAR contributions. This strong support for PAR givings ensures our cash flow throughout the year and enables us to keep our monthly Mission and Service contributions to the UCC current.

The Ministries and Programs Fund received 304 pledges for a total of \$453,866, Mission and Service Fund received 93 pledges for \$74,615, and the Property Renewal Fund received 96 pledges for a total of \$33,827. The M&P Fund decreased by \$10,188 (2.1%). M&S pledges are higher this year by \$3,865 (5.5%) and Property Renewal increased by \$1,720 (5.4%). There were 14 fewer pledges to the M&P Fund this year.

The 2012 introduction of pledging to the “Area of Greatest Need” augmented the Ministries and Programs Fund which was identified in need of priority funding. At year end the Committee of Stewards was able to allocate \$12,890 or 1.9% of total revenues (\$8,000 - 1.4% in 2012) to Mission and Service and \$7,000 or 1% of total revenues (\$7,000 - 1.3% in 2012) to the Property Renewal Fund. For the second year it was not necessary for the M&P Fund to access the Trustees’ Reserve Fund capital. Correspondingly, the Ministries and Programs results allowed past years’ deficits to be offset by \$6,575 or 1% of total revenues.

The Memorial Fund began 2013 with a balance of \$2,024 and ended with \$2,398.

Rideau Park supports our spiritual growth and enriches our community. Our support and participation as members of the Rideau Park community of faith is witness to God’s grace among us. God has given us so much and there is much that we can share in return. Thanks be to God.

Respectfully submitted,  
Brian Hamilton, Chair

Firstly, I would like to thank Doreen Hamilton for all her hard work as the Chair of this Committee before I took over and secondly, I would like to thank her for all the help she gave to me when I took over as Chair following the AGM in February.

The members of the Ministry and Personnel Committee are Bas Groeneweg, Jim Holton, Michael Presley, Marjorie Melick, Hyacinthe Wade Howard and Judy Paré. It has been a pleasure working with them and I look forward to their continued support and assistance.

This has been a busy year for the Ministry and Personnel Committee.

The year began with the retirement of our Director of Music, Richard Glasser. A special service was held on Sunday, April 21<sup>st</sup> with Rev. Phil Reller, a ministerial friend of Richard's, as guest speaker. All of Richard's favourite hymns and anthems were sung as well as some surprise pieces of music written especially for the occasion. Gifts were presented and a reception for all was held in Beecroft Hall. Richard was really touched by everything that took place that day. His final day with us was April 30<sup>th</sup>.

In the meantime, the Search Committee was busy working to find a new Director of Music and at the beginning of June it was announced that Ian Bevell had been selected to fill the position. He started on August 22<sup>nd</sup>. Ian is from England and had been at St. Andrew's Presbyterian Church in Kingston, Ontario for the last four years. We welcome his enthusiasm and are happy he is quickly settling in. He has many interesting plans for the future.

We have to thank Dianne Ferguson, who filled in as Director of Music during the month of May to the beginning of June, and Rachel Laurin, who played the organ during June, July and August until Ian took over. We really appreciated the work that they did during that time period.

Our custodian, Paul Sorg, returned to work on a part time basis at the end of January and started working full time at the beginning of March. Steve Spidell, Paul's part time replacement, continued to work part time until September to assist Paul. Steve has since returned to assist in closing the church on Sundays after the service and to help with the snow clearing, something Paul's doctors did not feel he should be doing. Needless to say, we were delighted to have Paul back and hope he will be with us for many more years to come.

Our Administrative Assistant, Kay Saunders, announced at the end of this year that she would be resigning effecting May 1, 2014 for family reasons. The Ministry and Personnel Committee is putting together a search committee and will shortly be advertising for Kay's replacement. We wish Kay all the best in her future endeavours.

This is a busy congregation with many activities going on every day. This could not take place without the dedication of our staff who work to ensure that this is a safe, vibrant, well maintained place where people can come to enjoy a game of euchre, lunch, pastoral care, Bible Study, music, quiet time and all the other numerous events that take place here. None of this could happen without their hard work.

Respectfully submitted,  
Marilyn Law, Chair

In 2013, the Administrative Committee worked with the Administrator regarding the purchase and maintenance of office equipment, for example: a new colour printer and the lease for the photocopier, a new audio broadcasting program to broadcast the audio of our Sunday services, and a new computer with special sound card and upgraded speakers for our new Director of Music. The internet speed at Rideau Park was also increased for greater efficiency.

As usual, we enjoyed working with both the Administrator, Debi Brown, and Administrative Assistant, Kay Saunders, both of whom were efficient and pleasant when called upon. On behalf of the committee, I extend our warmest thanks to Judy Paré and Sonya Sweeney, who filled in during Kay's maternity leave from October 2012 to September 2013.

Respectfully submitted,  
Nancy McPherson, Chair

The Nominations Committee is a sub-committee of Council. The objective of the committee is to ensure that all vacancies on Council, Session, Committee of Stewards, Trustees, and Presbytery Representatives are filled each year. In addition, the committee is responsible for recommending appointments for the position of Chair for each of the sub-committees of Council, Session and the Committee of Stewards.

The Nominations Committee consulted both the Ministerial staff and the Council Chair concerning the church's needs for 2014. As of November 20, 2013, the committee has been able to fill all the vacant positions.

One vacancy occurred during the summer of 2013. Chris Inrig resigned as an Elder and relinquished her position as a Rideau Park Representative to Presbytery. Judy Paré took over Chris's Elder duties and Sheila Faure accepted the invitation to become a Presbytery Representative. This nomination was accepted by Council at the November 20, 2013 meeting.

### **Summary of Nominations**

Vacancies on Council for 2014 include Secretary of Council and one representative from Stewards.

Other vacant positions for 2014 were Treasurer, Chair of Trustees, Chair of Administrative Committee, Stewardship Chair, Co-chair of Worship and Music, Chair of Social Action and Outreach.

This year, twenty-three Elders were due to finish serving their terms as members of Session and one Elder submitted her resignation prior to the end of her term. Twenty agreed to extend their terms. Their names can be found in the attached table under the title Members of Session. Four Elders have decided not to renew their terms. Session currently has 47 members covering 44 districts. Many Rideau Parkers continue to embrace new technologies and have chosen to be contacted via email for information purposes. This has resulted in smaller district lists in many cases.

Ten of the members of the Committee of Stewards finish their terms in 2014, but all agreed to extend their term. The attached table includes the Members of the Committee of Stewards.

### **Recommendations:**

As indicated in the attached table, the congregation's approval is requested for:

1. the appointments to Council;
2. the extension of terms of office for Elders and Stewards;
3. the slate of new Elders and Stewards; and
4. the appointment of new Chairs of Committees as well as an extension of terms for some Chairs of Committees.

The Nominations Committee would like to take this opportunity to thank all those who are finishing their terms this year for their tireless dedication and service to the church. The Committee would also like to sincerely thank all those who have agreed to contribute their time and talents to the life and work of Rideau Park United Church.

I would like to express my sincere thanks to all the members of the Nominations Sub-committee: Mabel Bannerman, Wayne Bond, Mary Lynne Holton, Alyce Dunnewold, Marilyn Law, Drew Presley, Jessie Weldon Gibb, and ministers Steve Clifton and Elizabeth Bryce for their support and dedication to achieving our objectives.

Respectfully submitted,  
Judy Paré, Chair

The following pages list the appointments (both proposed and existing) to Council, Session, Stewards, Trustees, Presbytery Representatives and the Chairs of all Committees with the terms of office that they have agreed to serve. For clarification, the year in parentheses after each name indicates that the person will serve in the position until February of that year (that is, until the congregational meeting in February).

An asterisk (\*) indicates new appointments to the positions indicated. A double asterisk (\*\*) indicates extension of term.

#### COUNCIL MEMBERSHIP

- The Chair and Vice-chair are elected for two-year terms.
- All other Council members are elected for three-year terms, except as indicated.
- The Ministers and Church Administrator are ex-officio, non voting members.

COUNCIL CHAIR	Mary Lynne Holton	(2015)
COUNCIL VICE CHAIR	Alyce Dunnewold	(2015)
COUNCIL SECRETARY	Brian Neal*	(2017)
CHAIR OF SESSION	Christy Harris	(2016)
SESSION REPRESENTATIVES	Judy Paré	(2016)
	Maureen Stark	(2015)
CHAIR OF STEWARDS	Gaveen Cadotte	(2015)
STEWARDS REPRESENTATIVES	Bob Roden**	(2015)
	Bob Rennie	(2016)
CHAIR OF STEWARDSHIP	Brian Hamilton**	(2017)
CHAIR OF MINISTRY AND PERSONNEL	Marilyn Law	(2016)
OTTAWA PRESBYTERY REPRESENTATIVE	Doug Robinson	(2016)
CHAIR OF BOARD OF TRUSTEES	Gavin Currie**	(2015)
PRESIDENT OF UNITED CHURCH WOMEN	Barbara Robinson	(2015)
CHAIR OF ADMINISTRATIVE	Nancy McPherson**	(2015)
MEMBERS AT LARGE	Drew Presley	(2015)
	Adam Kurz	(2016)

**Members retiring:** Lisa Sadler (Secretary), Rod Hagglund (Acting Chair of Stewards)

#### STANDING COMMITTEES

CHAIR OF SESSION	Christy Harris	(2016)
CLERK OF SESSION	Shanti Inman	(2017)
ELDERS	<i>See Members of Session section</i>	
<b>Member retiring:</b>	Nancy McPherson (Clerk of Session)	

CHAIR OF STEWARDS	Gaveen Cadotte	(2015)
TREASURER	Bob Roden**	(2015)
STEWARDS	<i>See Members of Stewards section</i>	

#### CHAIRS OF COMMITTEES

MINISTRY AND PERSONNEL	Marilyn Law	(2016)
ADMINISTRATIVE	Nancy McPherson**	(2015)
COMMUNICATIONS	Alyce Dunnewold	(2015)
CONGREGATIONAL DEVELOPMENT	Greig Scott**	(2015)
STEWARDSHIP	Brian Hamilton**	(2017)
SOCIAL ACTION AND OUTREACH	Frances Dawson*	(2017)

<b>WORSHIP AND MUSIC</b>	(Co-chairs) Kate Whitridge	(2015)
	Nancy Begg-Durkee*	(2017)
<b>PASTORAL CARE</b>	Christel Kurz	(2016)
<b>NOMINATIONS</b>	Judy Paré	(2015)
<b>CHRISTIAN DEVELOPMENT</b>	Elizabeth Acquaah**	(2015)

**Chairs retiring:** Sandra Weedmark, Social Action; Shaija Verma, Worship and Music.

#### TRUSTEES

<b>CHAIR</b>	Gavin Currie** (2015)		
<b>SECRETARY</b>	Daryl Lindberg		
<b>MEMBERS</b>	Ed Boothe	Norm Edwards	Bob Elliott
	Murray Ferguson	Bas Groeneweg	Keith Harris
	Les MacLauchlan	Jacqueline Newton	Susan Vaughan

#### PRESBYTERY REPRESENTATIVES

Sheila Faure*	Brian Irvine
Don Melick	Doug Robinson

**Members retiring:** Christine Inrig

#### MEMBERS OF STEWARDS

Tony Bernard**	(2015)	John Blackmore	(2015)
Gaveen Cadotte	(2015)	John Durkee**	(2017)
Donald Ford**	(2015)	Rod Hagglund**	(2017)
Brian Hamilton**	(2017)	Mary Harris**	(2015)
Mark Inman	(2015)	Andrew Jeffrey**	(2015)
Bill Ott**	(2017)	Bob Rennie	(2016)
Bob Roden**	(2015)	Steve Shipley**	(2017)

#### MEMBERS OF SESSION

Elizabeth Acquaah	(2016)	Malcolm Bayne**	(2015)
Graeme Beattie**	(2016)	Lynda Becker	(2016)
Nancy Begg Durkee**	(2015)	Myrna Belo	(2016)
Wayne Bond**	(2017)	Janet Buske-Wichser	(2015)
Gavin Currie**	(2017)	Helen Cutts**	(2017)
Dieudonné Detchou	(2015)	Janet Dundas	(2015)
Bas Groeneweg**	(2017)	Doreen Hamilton**	(2015)
Janette Hamilton Silcoff**	(2017)	Don Harper**	(2017)
Lois Harper	(2016)	Christy Harris	(2016)
Jim Holton	(2015)	Mary Lynne Holton	(2015)
Karen Humphries	(2016)	Marlene Hutchinson*	(2017)
Heather Ingrams	(2015)	Shanti Inman**	(2017)
Joyce Ireland**	(2015)	Karen Lamb	(2016)
Marilyn Law	(2015)	Ron Little	(2016)
Anne MacMillan**	(2015)	Nancy McPherson	(2016)
Don Melick**	(2017)	Jacqueline Newton**	(2017)
Judy Paré	(2016)	Drew Presley**	(2017)
Doug Robertson**	(2017)	Elaine Robertson**	(2017)
Barbara Robinson	(2015)	Doug Robinson	(2016)
Gary Seymour	(2015)	Steve Shipley**	(2017)
Maureen Stark**	(2017)	Margaret Stinnett*	(2017)
Bill Totten	(2015)	Hyacinthe Wade Howard	(2015)
Sandra Weedmark	(2015)	Jessie Weldon Gibb	(2015)
Kate Whitridge**	(2016)		

**Elders retiring:** Sharon Bernard, Chris Inrig, Kathy Mayes, Susan Vaughan, Chris and Joanne Winckel



During the first weekend in February, Rideau Park billeted 100 youth for Worshiplude, and warmly welcomed our Moderator, the Rt. Rev. Gary Paterson, who spoke at the Sunday service.

Rideau Park offered mid-week services during Lent, the summer months, and Advent. The thoughtful and inspiring Encarna experience was again held on a Wednesday during Lent and Advent. The committee also arranged a performance of the play with music, *Jesus, My Boy*, in December. The committee would like to thank all of the volunteer midweek service leaders, and expresses its deepest appreciation to Bas Groeneweg, who is retiring after coordinating the midweek services for 25-30 years.

For the third year, the committee provided a series of six luncheons following the 11:15 service. Members who attend this service have expressed their appreciation for the fellowship of these luncheons.

A number of ongoing issues have been studied by the Worship and Music Committee throughout the year, including a report by Thierry Faure on Rideau Park attendance, video broadcasting of church services, and a pilot project to reduce the use of paper for Sunday bulletins.

Richard Glasser continued to provide memorable concerts and wonderful music at Rideau Park until April 21<sup>st</sup> when he retired. Dianne Ferguson took over in late April, Rachel Laurin played the organ from June through August, and Iain MacPherson led the choir in June and organized special music through the remainder of the summer. The Worship and Music Committee participated in the review of the Music Director's job description, and received the report of the music survey that was conducted by a sub-group of the Music Director Search Committee.

Ian Bevell joined Rideau Park as the new Music Director in August. Guidelines were introduced on the use of the sanctuary organ. Four new section leads joined the choir over the course of the autumn. Stuart McKinnon, Rick Richardson, Doreen Taylor-Claxton and Colleen Woodhouse stepped in until the new leads arrived.

Special musical events of the year included glorious choir and bell concerts, Unisong at Rideau Park in June, and a children and teens' Variety Show in November.

The committee expresses appreciation to Andrea Laliberté and her team of many for their time and effort in leading the children and youth chime and handbell choirs, and the extraordinary work in writing, directing and presenting the Christmas pageant. The committee thanks Marcia Gosse for her wonderful dedication in leading the handbell choirs, providing first class concerts, and sharing her bell music ministry at Rideau Park and in the broader community.

The committee also expresses its gratitude to Heather Ingrams and other volunteers for their leadership of the cherubs and children's choirs, to Barbara Jeffrey for her organ playing, and to our section leads, and all the talented musicians who contribute to Rideau Park's music ministry.

2013 was a very busy year. Special thanks to our organizers of coffee, communion support, ushering, decorating, advertising, hosts and coordinators of luncheons and special events, music leaders, ministers, the staff of Rideau Park United, and Steve Shipley and Ann Ketcheson (Steve's replacement) for their excellent work as committee secretary.

Respectfully submitted,  
Kate Whitridge and Shailja Verma, Co-chairs

In 2013, there were two ringing choirs for young people at Rideau Park United Church. Note-Able Sound Chimes ensemble, for ringers in grades 2-6, met in the Sanctuary every Thursday evening from 6:15-6:45 p.m. The group was directed by Andrea Laliberté with assistance from Erin Brunet, Merina Shulist and members of our teen bell choir. Grace Notes Teen Bells, for ringers in grades 7-12, also met in the Sanctuary every Thursday evening and rehearsed from 6:45-7:30 p.m. The group was also directed by Andrea Laliberté with the capable aid of Erin Brunet, Merina Shulist and Pat Whitridge.

Grace Notes had a special opportunity in February 2013 to participate and share music at Worshiplude, a gathering of over 500 youth from all over Ontario. This weekend-long event coincides annually with Ottawa's Winterlude celebrations. Grace Notes shared two pieces at the Saturday evening Worshiplude service at Dominion Chalmers Church. Our Moderator was there and one of our pieces was filmed and posted on YouTube, a first for our group.

In the Spring of 2013, both Note-Able Sound and Grace Notes shared their music in worship at Rideau Park on several occasions. A highlight for both groups was the opportunity to jointly play a piece called "Celtic Farewell" as part of the service honouring our retiring Music Director, Richard Glasser. The ringers were accompanied by Liz Pickard on flute. Another special achievement was that Grace Notes played a medley of pieces from "Les Misérables" at the annual Bells in Spring concert (where both groups participate annually). This special piece featured singing by Kaitlin Jourdeuil and Rigel Shulist who rang and sang at the same time. The piece was met by a standing ovation.

In the fall of 2013, both groups once again enjoyed a large enrolment and continued under the direction of Andrea Laliberté. Assisting Andrea were Erin Brunet, Merina Shulist and Pat Whitridge. Many members of Grace Notes continue to serve as mentor ringers for our youngest chimers and we are grateful for their support. Note-Able Sound shared their music as part of the Christmas Bell concert and the Christmas Eve family service. Three ringers from Note-Able Sound (Andrew Davies, Kieran Dawson & Lauren Jensen Harback) also accompanied Joyful Seraphs on a piece performed on Christmas Eve. Grace Notes shared their music at the Christmas Bell Concert, the annual Christmas Pageant and the Christmas Eve family service.

For more information, or to register for one of our ringing groups for children and teens, please contact Andrea Laliberté at 613-248-1283 or [marcandrea@rogers.com](mailto:marcandrea@rogers.com).

Respectfully submitted,  
Andrea Laliberté

It has been a busy year for of the Rideau Park Handbell adult groups.

A Touch of Brass is one of two adult handbell groups with 10 dedicated members and several volunteer substitutes, all of whom play for the glory of God at Rideau Park United on a monthly basis as well as sharing their talents at the Rehabilitation Centre, UCW Candlelight Service, Oakpark Retirement Home, Kitchissippi United Church, Rideau Park Choir Concert, etc.

La Bell Ensemble is the second adult handbell group with 10 dedicated members who love to take the bells and share their talents in the community, at Merrickville United Church, Parkway Pentecostal Church, King's Daughters & Sons apartment complex, St. Stephen's Presbyterian Church, Rehabilitation Centre, Bridlewood Trails Retirement Home, Salvation Army Grace Manor, St. Thomas the Apostle Church and Parkdale United Church.

Ringin' Praise is the third adult handbell group with 11 wonderful members with a desire to learn. They are an enthusiastic group who enjoy learning the various bell techniques and sharing their talents with the joint bell concerts.

A combined choir was also created to participate in the Ontario Guild of English Handbell Ringers festival in London, Ontario. They enjoyed the camaraderie as they practiced for the Festival.

An early morning highlight was CTV Morning Live where a combined bell choir presented two selections on live TV.

All of the groups were active participants in the "Bells In Spring" Concert – a massed concert which incorporated 3 other handbell choirs from neighbouring churches in the community.

This year we started the Christmas season with our third annual "Ringin' In Christmas" bell concert in December for Rideau Park bell choirs. A blessing of the season, this concert meant that \$500 was donated to the Heron Road Emergency Food Centre, and approximately \$900 was donated to Rideau Park's Christmas Cheer program.

Jeanette Hamilton and I performed several selections as a duet at Trinity-Kanata Presbyterian Church.

Thank you to all the dedicated ringers – new and long-standing ringers alike! They are a fantastic group of people who love bells and music.

If you are interested in joining any of these talented groups and becoming a handbell ringer or chimes ringer, please call Marcia Gosse at 731-2281.

Respectfully submitted,  
Marcia Gosse

Membership: Elizabeth Acquaaah, Rev. Steve Clifton, Dieudonné Detchou, Bas Groeneweg, Andrea Laliberté, Anne Marie Tessier, Gary Seymour, Tara Lynne Lockhart, Amy Neal

The mandate of the Christian Development Committee is to take the lead in planning and developing programs and events to promote Christian development for people of all ages in the congregation. The following is a list of ongoing programs, and annual events that the committee oversees:

#### Programs

Sunday School  
 Sunday Evening Bible Study  
 Adult Bible Study Groups  
 Lenten Book Study  
 Adult Retreats  
 Confirmation Classes  
 Vacation Bible School  
 Hear Say Supper Group  
 Scouting Programs  
 Shoe Boxes for Harmony House Campaign  
 Sunday School Children's Cards for Charity

#### Events

Welcome Back Brunch  
 Carol Gardner Awards  
 Carleton University Pause Table  
 Advent Happening  
 Pageant Reception

The CD Committee is a very busy committee that is responsible for a number of programs and events. Fortunately, many of these programs "seem" to run themselves because of the contributions of our dedicated volunteers and of course the great work of our staff person, Rev. Steve Clifton. With the help of the volunteers, we continue to provide a vibrant Sunday school program. We are privileged to have 20 teachers and 110 students from age 3 to 13 who participate in Sunday School. Rideau Park's Sunday School continues to be an attractive feature of our church. We welcomed back Mark Shulist and Beth Alexander as the new Sunday school teachers for Grade 7- 8 students.

Confirmation classes began on October 27<sup>th</sup>. Thirteen students have signed up for the classes run by Rev. Steve Clifton with the help of Alyce Dunnewold.

We would like to thank Paul Sorg who ensured that Sunday school rooms were ready on Sunday mornings and also took care of all the changes that we requested.

It has been six years since our Vacation Bible School (VBS) program started offering a full day program led by the youth of Ottawa Presbytery and supported by youth volunteers from Rideau Park. The full day camp continues to appeal to many working families. Approximately 50 children attended VBS compared to 53 who attended last year. The program continues to be successful. The Ottawa Presbytery held its Leaders In Training camp during Vacation Bible School at Rideau Park.

CD Committee hosted 110 young people and leaders from the London Conference who attended Worshiplude in Ottawa in February. CD provided breakfast for our guests on the Saturday and Sunday mornings during Worshiplude.

The 28<sup>th</sup> Ottawa Scouts Group is very active and currently comprises 29 Cubs, 21 Beavers, 29 Scouts, 20 Venturers, and 36 leaders.

The CD Committee sponsored three successful Foundation funding applications, including the 28<sup>th</sup> Ottawa Scouts' request that allowed 16 youth and young adult scouts to participate in a highly successful international community development project in Chinchá Alta, Peru. Also successful

were the funding requests for the LGBT Safe Space Workshop, and the “Listening to the Echo/God Monologues” project. Additionally, CD supported Miriam Sherwin’s successful Speakman Fund application that assisted her to attend the Destination Greenbelt event in the UK.

Rideau Park supported the Pause Table at Carleton University during examination periods.

We are grateful for “Event Shepherds” who helped make our Advent programs possible: Tara Lynne Lockhart and Ann Marie Tessier for Advent Happening; Mark Shulist and Gretchen Conrad for the Harmony House and Banff Avenue Community House Shoebox program, and Andrea Laliberté for directing the Christmas Pageant and organizing refreshments after the event.

We would also like to highlight the sustained contributions of Janine Ewing Dolbec who was in her ninth year of running the Children’s Cards for Charity Project, and Anne Marie Tessier, Event Shepherd for the Welcome Back Brunch. The brunch was organized in collaboration with the Congregational Development team that hosted an Open House. We would like to thank Andrea Laliberté for overseeing the teens’ shawl-knitting program; and Ann Ketcheson, Frances Dawson and Flora Patterson for their diligence on the Library Renewal Project.

Through the Carol Gardner Awards we honour outstanding contributions to our Sunday School. Last year’s recipients were Candice Presley and Susan Kilborn de Haan, who were recognized for their exemplary service to the JK/SK grade in Sunday School.

We would like to thank Don Ford for setting up the Wi-Fi in the Sunday School rooms. Sunday school teachers can download their Sunday school curriculum, as well as their lessons while in class. This helps to reduce the cost of purchasing hard copies of the Sunday school curriculums.

The CD Committee comprises dedicated members who generously give of their time and talents. I would like to thank them for their hard work this past year, and I would like more of you to join us.

Respectfully submitted,  
Elizabeth Acquaah, Chair

High school age youth meet every Sunday night in the Church Parlour for Youth Bible Study (YBS). Last spring YBS began what we call: the *Theology of Cinema?*.... or how about .... *Flicks and Faith?* Anyway, whatever we call it, we have been watching movies in 2013; films that have themes that reflect on the Gospel in some way, and then we discuss them through the lens of the Christian tradition. We started with a trip through the wardrobe and visited *Narnia*, moved on to the movie *Doubt*, followed by *Places in the Heart* and *Romero*. In the New Year we went together to see *Les Miserables* at the cinema; this musical is thick with Christian themes: faith, forgiveness, redemption...all with an amazing soundtrack. Then it was *Jesus of Montreal*, *Akeelah and The Bee*, *Life of Pi*, *Soul Surfer*, *Shawshank Redemption*. We also went to a performance of the *God Monologues* and ended in the spring with another trip to the cinema to see *Star Trek: Into Darkness* (which has few religious themes but was a lot of fun). Looking to 2014 we plan to explore some other faith traditions, both Christian groups and other religions, in order to better understand our neighbours, and ourselves.

Amy Neal is running a session of Bible Survey on Sunday mornings. This group of grade 9 students surveys the Bible from Genesis to Revelation.

Rideau Park's volunteers bring food to the Carleton University Ecumenical Chaplaincy Pause Table in April and December. They provide free food and friendly smiles to students during their exams. The Pause table is a significant outreach. Last year 8,357 students stopped by. The generosity of those who gave food or time is really appreciated by the students.

The Chaplaincy sent a thank you note that read as follows: *"The students were so thankful. Many had no money left for food, or were too anxious to think about cooking. Having free food available meant that they were going into their exams with "fuel" in their systems. Encouraging words from the volunteers were also highly valued. A proctor told us that she could tell which students had been to the Pause Table because they were the calm ones."*

Thanks to the Presbytery Youth and Young Adults (YAYA) Ministries program, there are opportunities for our young people to be involved in Presbytery YAYA events.

- Young Adults are invited to gather on the last Sunday evening of each month for a meal at an event called the **Open Table** ([www.theopentable.ca](http://www.theopentable.ca)) at All Saints church in Sandy Hill; this is a joint Anglican/Lutheran/Presbyterian/United Church venture.
- Twice each year, youth are invited to gather for **the Point**, a worship event for teenagers in the Ottawa Presbytery. Some of our youth have helped to lead the Point and this fall it was held here in Beecroft Hall. More than 600 young people attended the service last February, and our Moderator the Right Rev. Gary Paterson made a special guest appearance. Our youth bell group Grace Notes played at the service. You don't have to be young to attend the Point; why not come out to the Worshiplude service in 2014? It will be at Dominion Chalmers United on the evening of February 1st. It's an amazing experience to be in a congregation with 600 youth and young adults.
- The February Point is huge because it is part of **Worshiplude**; youth from all over Quebec and Ontario come to Ottawa for Winterlude, are hosted by local churches and join in with the Point worship gathering. RPUC hosted 110 awesome young people from London Conference last year during Worshiplude weekend and more are coming to be with us again in February 2014.
- Our Presbytery also runs the **Camp Awesome** VBS program over 6 weeks in July and August and several of our young people are involved in leading the program.

Our congregation is blessed with great young people who contribute a great deal to our church's life. Youth make our annual VBS possible with their enthusiastic leadership. A number of our youth and young adults serve as Sunday School teachers throughout the Sunday School year. Projects like Advent Happening, Christmas Cheer and the Christmas Pageant engage our youth in the work of our congregation. They share musical gifts through vocal choirs, handbell and chime choirs. Our youth bless us with their gifts in many ways. We are grateful for all those who work with the youth of our congregation.

Respectfully submitted,  
Rev. Steve Clifton

Our scouting program is run under the auspices of the Christian Development Committee. We have had another successful year. In the fall session we have 135 registrants, down from 137 last year. The highlight of the year was the community development trip to Peru – check out their blog (in reverse chronological order) - <http://28thottawa.tumblr.com/> Twenty registered members from the 28<sup>th</sup> (12 youth, 5 young adult leaders – all former Venturers - and three adult leaders) and two paramedics made the trip. Their total budget was over seventy-five thousand dollars and was aided by a \$3,000 grant from Rideau Park United Church, which was applied to the youths' travel costs. They engaged in 2 weeks of grueling labour, building 3 brick and concrete toilets at a school, doing a complete renovation of 14 rooms at a senior centre (including tiling and painting), after completely stripping the rooms down. The group then hiked the Machu Picchu trail before returning to Canada.

**Beaver Scouts** Beaver Scouts are ages 5-7. The Beavers participated in Scoutrees and Apple Day, Scout Sunday at Rideau Park United Church, the clean-up of the Alta Vista School park and planting trees in the spring. Beaver families took part in several outdoor activities including Beaveres, skating, swimming night, tobogganing, family hikes, all-sections Camp at Lac Philippe, and the Rideau Area All Sections Activity Day.

**Cub Scouts** Cub Scouts is a program designed for the social interaction of youth ages 8-10. We focus on the earning of badges and stars through a cooperative, athletic, and energetic program. Our Cub Scouts participate in the designing of our program that focuses mainly on having fun in a stimulating environment and includes camping, hiking, swimming, cooking, and a reforestation program.

**Scouts** Scouts are ages 11-14 and this year at 29 – 10 girls and 19 boys, the troop is the largest it has been since the early 1990s. Programming included six nights of camping, visiting Algonquin College for an introduction to computer careers, hiking in the Marlborough Forest, SCUBA instruction, participating in Scout Sunday at Rideau Park, flipping pancakes for Shrove Tuesday, running the Amazing Race urban night hike, indoor rock-climbing and volunteering for an Ottawa Food Bank event and at the National Remembrance Day ceremony. Eight youth attended a leadership training course, 2 completed St. John Ambulance Standard First Aid and 2 received the Chief Scout Award. This doesn't include the 2 who went to Peru! The troop expects to grow in 2014.

**Venturer Scouts** Venturer Scouts are ages 14-17. At 17 registered youth, we are one of the largest Companies in Ottawa. They camped at all sections camp, then Rovent, which is a Joint Council event held at Camp Opemikon. Weekly activities have included building a catapult, overnight movie night at the church, board games and Christmas cookie baking. The bulk of the youth who went to Peru were Venturers or former Venturers who were registered as young adult leaders.

<sup>1</sup> This grant went to 28<sup>th</sup> Fundraising Group, whose accounts for the trip have not been finalized.

Respectfully submitted,  
Gary Seymour, 28<sup>th</sup> Ottawa Scouts



The Pastoral Care Committee (PCC) strives to strengthen the spiritual well-being of the entire congregation by fostering a sense of “church family” and fellowship. The focus of the Pastoral Care Committee is largely on seniors, but not exclusively. We also have a responsibility to make the entire congregation feel welcome!

PCC members continued with visiting those in our church community who are no longer able to attend services and other events. With the help of our Pastoral Care Minister, Rev. Georgina Fitzgerald, we maintain a list of people whom we visit on a regular basis (usually 45-55 names are on this list).

On behalf of the congregation, PCC sent condolences to recently bereaved members of the church community, as well as best wishes for other significant life events. PCC also helped support the prayer shawl ministry, the distribution of regular Sunday flowers, and the Easter lilies, which go to those on our PCC list and others in need of a little cheer. Our role of welcoming both regular church attendees and newcomers is enhanced by organizing the Sunday coffee-time greeters and the Welcome Corner hosts.

In April, PCC organized a Sunday afternoon communion service followed by a tea party, especially for seniors on our PCC list and others who are not able to get out to church regularly. We mailed personal invitations and provided transportation to and from the event, as required, which made this a big outing for about 25 people.

In the fall, PCC helped with the Our Hearts Remember Service followed by a reception. Again, invitations are sent to all who have lost a loved one in the current year, but others are welcome to attend. Also in November, we invited the congregation to attend an open session with a guest speaker, Dr. Thomas Foreman, Director of Clinical and Organizational Ethics, Ottawa Hospital. We had over 40 people present for this interesting and entertaining presentation about end-of-life issues (who would have thought it possible to enjoy this topic!).

Although most of the Pastoral Care Committee has been doing this important work on behalf of the congregation for many years, we were more than pleased to welcome a few new members this year and are actively recruiting volunteers to join our team! On behalf of the congregation, I thank all PCC members for the vital role they perform in keeping our church community bonds strong.

Respectfully submitted,  
Christel Kurz, Chair

The members of Social Action and Outreach are a dedicated and committed group. The Committee organizes programs/events/space for: tenants in low-income housing; Christmas Hampers; Heron Emergency Food Bank; seniors; children and their care givers; and Alcoholics Anonymous.

Respectfully submitted,  
Sandra Weedmark, Chair

**Christmas Cheer – Frances Dawson**

I wish to thank the CC team and volunteers from the congregation especially Carolyn Scollick for ensuring the Christmas Cheer program was run successfully when I was unable to be there. This caring and effective response reflects the best of what Rideau Park is and is what continues to make the Christmas Cheer program possible year after year. For Christmas 2013 Rideau Park United Church delivered 73 hampers and 77 grocery vouchers.

**Peace and Development – Marilyn Law**

The Peace and Development Committee invited Jean Peart to speak on Black History Sunday and the Ni Wewe Tu choir provided the music. Following the service luncheon was served. We also continued to bring issues of concern to the congregation. We have decided to sponsor a refugee family through a new government programme and have started a refugee fund to help with expenses incurred once they arrive. Under this new programme families and individuals are already approved by the government which means that once the application is made, they will come to Canada much sooner.

**Heron Emergency Food Centre – Kathy Mayes**

Demand is up this year again. 60 volunteers work very hard to serve the 1,600 plus people who come to HEFC for emergency food aid every month. HEFC is the second largest Food Bank agency in Ottawa. The financial support and food donations from the Rideau Park community continue to be an important factor in HEFC's ability to provide nutritious emergency food supplies.

**Blair Court Community House – Frances Dawson**

In 2013 Rideau Park's support for Blair Court included two board members (Sheila Faure & Frances Dawson) and financial support from the Foundation for Ministries for a teacher to develop and coordinate the homework program. 27 children, staying an average of two hours, regularly attend, including 8 who receive one-on-one tutoring. In 2014, hopefully, fundraising efforts will help to sustain this program, but continued support from Rideau Park will be needed to develop a Homework Club that meets the needs of the children of the Blair Court Community. Rideau Park's Kathy Mayes and Astrid Paidra direct/assist with the Sewing Group and ESL/Cooking Group.

**Thursday Euchre Club – Steve Shipley**

The unofficial mandate of this club is, in order: to laugh; to talk and then play cards and we are very good at all three. Approximately 20 plus people arrive each week to play five rousing games of Euchre. This is followed by a good hot cup of tea and cookies and oh yes, once a month we celebrate club members who have birthdays in the month, with a birthday cake. Twice a year the club holds parties, one at Christmas and the second in June. The door is always open for new members and guests. We meet each Thursday afternoon from 1:00 to 3:30 pm from September to June. So please do not hesitate to drop in and please bring a friend along.

**Multifaith Housing Initiative (MHI) – Don Melick**

Rideau Park Church and The Rideau Park Foundation have been supporters of The Multifaith Housing Initiative (MHI) for many years. Over this period of involvement, MHI has grown to be a very

well recognized supplier of quality and affordable housing for needy individuals. For several years MHI has sought to grow its current stock of over 40 units to meet its objective of reaching 100 units by 2016. Recently MHI negotiated a conditional sale agreement for 18 additional units and if no problems are identified with the candidate building, MHI's stock of affordable units will rise to 60 early in 2014. Unfortunately, on December 20, 2013, MHI discovered that the vendor had not disclosed that significant environmental contamination existed on the property and as a result the offer to purchase has been withdrawn. The Search for another property to purchase will start up again early in 2014. Also MHI's postal address will be changing, as Heartwood House and most of its tenants will be moving to a newly renovated location at 404 MacArthur Ave before the end of 2013. If you want more information on any of these matters please contact Don Melick.

**Banff Avenue Community House** – Bas Groeneweg

This centre is situated in a somewhat obscure corner of the city, opposite Home Depot on Bank Street just past the Walkley Road intersection. This is one of fourteen similar centres located throughout the city. Sylvie Manser is the very competent and industrious House Director working with a small staff, a number of volunteers, a budget consisting of grants from the city and other institutions and many charities. This is a low-rental and low-income area and programs are all directed toward helping these people – adults and children – find employment, improve education and language skills and to improved their overall situation. There are currently 116 households, slightly over half of which are headed by single parents and slightly more than 200 children.

**Group for Friends** - Bill and Anne McMillan

This is both a fun and support group for physically or mentally challenged people aged 18 to 40. It meets at Rideau Park for events such as dances and movie/pizza nights.

**Alcoholics Anonymous**

The Oasis Group of Alcoholics Anonymous has been sponsoring regular speaker meetings at our church for more than 30 years – year around, including holidays. Friends and families of alcoholics and anyone interested in learning about AA or alcoholism are welcome to attend any of the meetings.

**50+ fitness** – Mary Harris

A group of seniors meet every Tuesday and Thursday morning to exercise at eight week intervals.

**Harmony Club** – Margaret Nelson

This group meets on the last Wednesday of each month from 10:30 am to 2:00 pm (excepting June, July and August). Cards and conversation precede a lunch made by volunteers. This is usually followed by a program of music or a guest speaker.

**Playgroup**

Pre-school age children and their parents or caregivers use the large Sunday School room for a variety of activities for small children and socializing. They meet Monday to Friday mornings from 9:30 to 11:00.

**Rideau Park Curling Club**

A group of men and women from the congregation meet regularly at the RA Centre to enjoy a game of curling, and new members are always welcome, no experience is necessary.