

# Advent 4 - LOVE

Sunday, December 22, 2019



Rideau Park United Church

*We acknowledge, with respect the history, spirituality, and culture of the indigenous peoples of Canada, and their stewardship of the unceded Algonquin land where this church is built. Rideau Park is an Affirming Congregation in the United Church of Canada. All are invited to participate fully, with mutual respect, in the life and work of the church, including those of diverse ages, abilities, gender identities and sexual orientations, races ethnicities, religions, and economic backgrounds.*

## **WE GATHER TOGETHER**

Gathering Music

Lighting the Candel Candles:

*Matthew 5:15 – No one after lighting a lamp puts it under the bushel basket, but on the lampstand, and it gives light to all in the house. In the same way, let your light shine before others.*

\*Call to Worship:

ONE: We have gathered this day to worship the One who comes to our hearts.

**ALL: The One who comes like an angel who favours us.**

ONE: The One who comes like an elder who mentors us.

**ALL: The One who comes as a child.**

ONE: We have gathered this day to worship the One who comes to our hearts.

**ALL: Let us raise up our hearts in praise!**

**\*Processional Hymn: 36 VU      Angels From the Realms of Glory      Regent Square**

Prayer of Approach and Jesus' Prayer (p.921 VU)

Advent Candlelighting: LOVE

Faure Family

One: Who do you say Jesus is?

Two: To a parent, Jesus is like a beloved child, the love of my life and joy to my heart.

One: To a follower, Jesus is Emmanuel, which means God-with-us.

Two: We wait for Jesus, God-with-us, who spreads love.

**All: We wait for Jesus.**

**Hymn: A Candle is Burning, verse 4**

**A candle is burning, a candle of love,  
A candle to point us to heaven above.  
A baby for Christmas, a wonderful birth,  
For Jesus is bringing God's love to our earth.**

## LISTENING FOR GOD’S WORD

A Time for all God’s Children

*(Following the story, the children are invited to go to Sunday School.)*

Reading: When Hope is a Child

Scripture Reading: Micah 5: 2-4

Lay Reader: Marc Lalibertè

**Hymn: 7 VU**

**Hope Is a Star**

Moon Beams

Reading: Papua New Guinea – The Peace Child

Joan Dewis

Anthem: “O Magnum Mysterium”  
Chancel Choir

M. Lauridsen

Reading: Celtic Tradition – Saint Brigit

Pat Whitridge

**Hymn: 47 VU**

**Still, Still, Still**

Still, Still, Still

Reading: Six Nations - Peacemaker

**Hymn: 71 VU**

**Twos in the Moon of Wintertime**

Jesous Ahatonhia

Reading: Descendants of Abraham - Moses

Scripture Reading: Matthew 1: 18-25

Lay Reader: Marc Lalibertè

**\*Hymn: 158 MV**

**Dream a Dream**

## OUR RESPONSE

Offering

Offertory Music:

Soloist:

“O Thou Tellest to Zion”

Tessa Fackelmann

Handel

from the Messiah

\*Offertory Response: 55 VU – verse 1 and 4

In the bleak midwinter, frosty wind made moan,  
earth stood hard as iron, water like a stone;  
snow had fallen, snow on snow, snow on snow,  
in the bleak midwinter, long ago.

What can I give him, poor as I am?  
If I were a shepherd, I would bring a lamb;  
if I were a wise man, I would do my part;  
yet what I can I give him - give my heart.

Prayer of Thanksgiving and Concern

The Life and Work of the Church

\*Hymn: 48 VU

Hark the Herald Angels sing

Mendelssohn

### Christmas Season Services

#### **Christmas Eve Tuesday, December 24:**

**6:30 p.m.** A Family Christmas service featuring our children and youth singing and ringing choirs

**8:30 p.m.** Christmas Candlelight Communion with music by Rideau Park's Chancel Choir

**10:30 p.m.** Christmas Candlelight Communion with the Chancel Choir and Touch of Brass bell choir

**Sunday, December 29:** Come join us after the service, 11:30 a.m. in Beecroft, for coffee and light refreshments and to hear and speak to Andrew Rader about his new book “**Beyond the Known**”. After his talk and Q&A Andrew will be pleased to sign your book. *A sign-up sheet is available TODAY during coffee hour to assist us with the planning for refreshments.*

**Rideau Park News**  
**(613) 733-3156 rideaupark.ca**

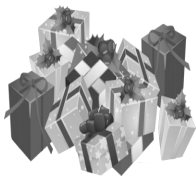


**Upcoming Worship Events**

Dec 25	Christmas Morning Service	10:00am
Dec 29	Sunday Worship	10:00am
Jan 5	Emmanuel United-Shared Service	10:00am

**Blue Christmas:** Please join us at **3:00 p.m. TODAY**, for the gentle Blue Christmas service. A quiet, contemplative service; an alternative to traditional services. Maybe your year has been hard – for whatever reason (bereavement, illness, estrangement, loss of income, loneliness or worry)– and Christmas seems to highlight the difficulties. Or maybe in an over busy life, you just want space to reflect, recall, regroup.

**The Christmas Nativity - Week 4** -As we journey through Advent together, please take time to look at our Nativity scene at the front of the church. Each week, one or more different scenes will be on display as the Advent Liturgy unfolds and we travel to Bethlehem and beyond. This week's display could perhaps be titled "I would bring a Llama". These nativities from South America show how local environment and culture shape the artist's rendition of the traditional Christmas scene. What unconscious elements shape our own perceptions of that moment so long ago and far away?



**CHRISTMAS SHOE BOXES:** in support of the women and children living at Minwaashin women's shelter and the wonderful children and youth who use the services of the Banff Avenue Community House.

The **143** beautifully wrapped and generously filled shoe boxes were picked up by our community partners on the morning of Tuesday, December 17. Thank you to everyone who participated!

**The church office will closed** from 4:00 p.m. on Tuesday, December 24, and **open** again at 9:00 a.m. on Thursday, January 2.

*Please note: Debi Brown, the Administrator, will be in the church on Tuesday, December 31 from 9:00 a.m. till 1:00 p.m. to accept last minute donations for 2019.*



**"I Have a Dream Sunday" January 19:** Please plan to join us after the service for lunch and conversation with our guest preacher, Rabbi Deborah Zuker, Associate Rabbi, Kehillat Beth Israel.

## Mark Your New 2020 Calendar!

<b>January 5</b>	Shared service at Emmanuel	
<b>January 6</b>	Knitting	12:30pm
	Ringin' Praise	6:30pm
	Touch of Brass	7:15pm
<b>January 7</b>	Fitness begins	10:00am
	La Bell Ensemble	7:15pm
<b>January 8</b>	Stewards	7:30pm
	Worship/Music	7:30pm
<b>January 9</b>	Quilters	9:30am
	Euchre	1:00pm
	UCW Unit 2	1:00pm
	HearSay	4:45pm
<b>January 10</b>	Gentle Yoga	9:30am
	Chair Yoga	11:00am
	Choirs/Bells/Chimes	
<b>January 12</b>	UCW Installation	10:00am



## Coffee Hour Volunteer

<b>Dec 22</b>	Pat & Gavin Currie Heather & Wayne Bennett
<b>Dec 29</b>	Joanne Rodgers Ron MacPherson Nancy McPherson
<b>Jan 5</b>	Shared Service-Emmanuel
<b>Jan 12</b>	Doug and Elaine Robertson Karen Ott & Bruce Dixon

## Sunday Duty Officers

<b>Dec 22</b>	Judy Paré
<b>Dec 29</b>	Sandra Graham
<b>Jan 5</b>	At Emmanuel U.C

## Counting Volunteers

<b>Dec 23</b>	Rod Hagglund
<b>Dec 27</b>	B. Jeffrey, C. Jeffrey, R. MacPherson, M. Inman, J. Durkee, P.

Main Office is open Monday to Friday, 9am-4pm  
Visit our website: [rideaupark.ca](http://rideaupark.ca)  
Prayer Chain: Ext 227 or [prayerchain@rideaupark.ca](mailto:prayerchain@rideaupark.ca)

## Church Staff: 613-733-3156

Elizabeth Bryce - Minister	Mon-Thurs	ext. 224	<a href="mailto:ebryce@rideaupark.ca">ebryce@rideaupark.ca</a>
Steve Clifton - Minister	Tues-Fri	ext. 225	<a href="mailto:sclifton@rideaupark.ca">sclifton@rideaupark.ca</a>
Georgina Fitzgerald - Minister	Tues-Thurs	ext. 226	<a href="mailto:gfitzgerald@rideaupark.ca">gfitzgerald@rideaupark.ca</a>
Andrew Ager - Organist	Thurs-Fri	ext. 223	<a href="mailto:organist@rideaupark.ca">organist@rideaupark.ca</a>
Iain Macpherson - Music Ministry Coordinator	Wed-Thurs	ext. 301	<a href="mailto:choirdirector@rideaupark.ca">choirdirector@rideaupark.ca</a>
Debi Brown - Administrator	Mon, Wed-Fri	ext. 228	<a href="mailto:administrator@rideaupark.ca">administrator@rideaupark.ca</a>
Debby Gerro - Administrative Assistant	Tues-Fri	ext. 229	<a href="mailto:adminassist@rideaupark.ca">adminassist@rideaupark.ca</a>
Geoff Scollick - Custodian	Mon-Fri	ext. 229	<a href="mailto:custodian@rideaupark.ca">custodian@rideaupark.ca</a>