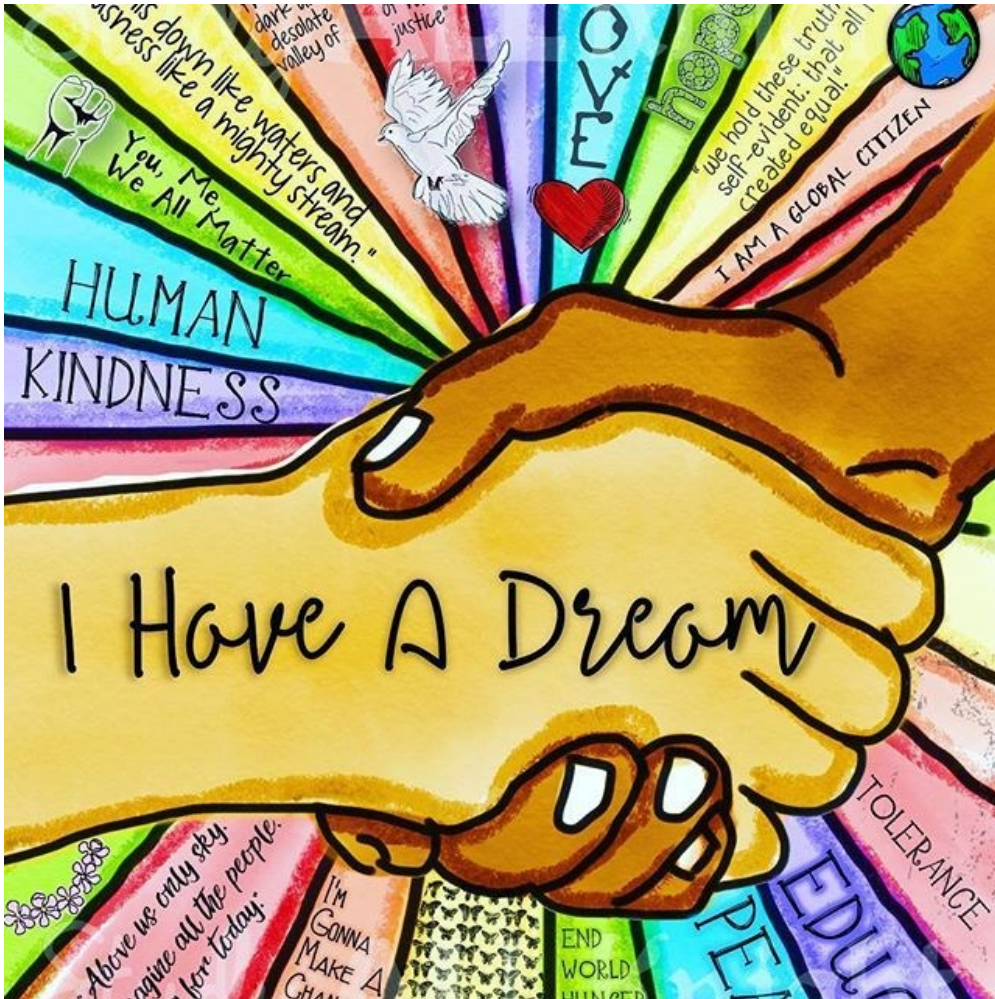


I Have a Dream Sunday

January 19, 2020



Rideau Park United Church

We acknowledge, with respect the history, spirituality, and culture of the indigenous peoples of Canada, and their stewardship of the unceded Algonquin land where this church is built. Rideau Park is an Affirming Congregation in the United Church of Canada. All are invited to participate fully, with mutual respect, in the life and work of the church, including those of diverse ages, abilities, gender identities and sexual orientations, races ethnicities, religions, and economic backgrounds.

I Have a Dream Sunday, January 19, 2020

WE GATHER TOGETHER

Gathering Music

Lighting of the Chancel Candles: *“Let the light of your face shine on us, O God. You have put gladness in my heart.” Psalm 4: 6-7*

***Call to Worship:**

ONE: In the name of all that is holy, we gather to listen to sacred stories.

ALL: **In the name of all that is holy, we gather to praise our creator.**

ONE: In the name of all that is holy, we gather to celebrate a dream of peace.

ALL: **Let us worship together**

***Hymn: 30 MV**

It’s a Song of Praise to the Maker

Prayer of Approach and Jesus’ Prayer (p. 921 VU)

LISTENING FOR GOD’S WORD

A Time for all God’s Children

Hymn: 106 MV

I Am the Dream

(Following the hymn, the children are invited to go to their Sunday School classes.)

Responsive reading: Psalm 40, p. 764 VU (with sung refrain) Lay reader: Gaveen Cadotte

Anthem: “Joined Together as One Body”
Chancel Choir

Biery

Scripture Reading: Exodus 1:1-22

Lay reader: Gaveen Cadotte

Guest Preacher: Rabbi Deborah Zuker
Kehillat Beth Israel

Hymn: 679 VU

Let There Be Light

Concord

Offering

Offering Music:

“Stabat Mater”

Rossini

Soloist:

Tessa Fackelman

Offering Response:

**What can I do? What can I bring?
What can I say? What can I sing?
I'll sing with joy. I'll say a prayer.
I'll bring my love. I'll do my share.**

Prayer of Thanksgiving and Concern

The Life and Work of the Church

***Hymn: 633 VU**

Bless Now, O God, the Journey

Thornbury

Commissioning and Benediction

Postlude



.....

We express deep gratitude today to our guest preacher, Rabbi Deborah Zuker, Associate Rabbi of Kehillat Beth Israel. Rabbi Deborah was born and raised in Ottawa, received a BA (Honours) in Psychology from Queen’s University, studied in Israel at the Pardes Institute and the Schechter institute, and received graduate degrees and rabbinic ordination from Columbia University and the Jewish Theological Seminary. Rabbi Zuker is a single-mom-by-choice of two amazing boys, Joey, 6 and Daniel, 4, and in her free time enjoys cooking and running.

Rideau Park News

2203 Alta Vista Drive, Ottawa, ON K1H 7L9
(613) 733-3156 rideaupark.ca



Upcoming Worship Events

Feb 2	Worshiplude Service	10:00am
Feb 9	Annual Congregation Meeting	11:15am
Feb 26	Ash Wednesday Service and Encarna	7:15pm

"I Have a Dream Sunday" Please plan to join us after the service **today**, for lunch and conversation with our guest preacher, Rabbi Deborah Zuker.

Writers of Rideau Park" today, at 3:00 p.m. in the sanctuary, our own authors: Randolph Harrold, Suzanne Bassett, Glenn Rivard, and Nadine Dawson will present excerpts from their own writings (from poetry to mystery novels). Andrew Ager will provide a musical mood and refreshments will be served afterwards in the Parlour. This event is entirely free of charge.

Harmony Club for Seniors (60+) will meet on Wednesday, January 29, 2019. Registration begins at 11:00 a.m. as members begin to gather. The annual fee is \$4.00. At 12:00 noon, a delicious lunch will be served by volunteers (cost is \$6.00). From 1:00 p.m. to 2:00 p.m. there will be a presentation. The presentation will be by Ron Bell, who will present "Healing of Magic to Heal People With Mental and Physical disorders". Please spread the word that presentations are open to all, without charge or prior notice. Please plan to join us again on February 26.

After a day at Winterlude, join us for the Worshiplude youth church service on Saturday Feb. 1, at 4:00 p.m. followed by a pizza dinner (cost: \$10.00 each). Worshiplude 2020 is a winter worship and fellowship event for youth and young adults aged 12-24 hosted by the United Church of Canada. More info. contact 613-733-3156 x229 or www.rideaupark.ca

Valentine Coffee (and Tea!) Party: Thursday, February 13, 9:30 - 11:30 a.m. Enjoy coffee and tea while choosing from the Bake Table, perusing the Potpourri Table and checking out the quilts for sale. All are welcome, meet some neighbours, bring a friend. Freewill offering. More information, 613-733-3156 x229. or, www.rideaupark.ca

Welcome to Rideau Park United Church. Please note: Audio loops are available from the ushers. Prayer. Requests for today's services can be noted on the lists at the entrances. Childcare for pre-schoolers is available in room B-12 (lower hallway). Quiet activity boxes are also available for children in the chapel each Sunday. ****Indicates where the congregation is invited to stand as able.*** Please join us for refreshments and conversation in Beecroft Hall after the service.

Rideau Park's **Euchre Club** meets every **Thursday, 1:00 p.m. - 3:30 p.m., until June**. Join us for cards, refreshments, conversation and fun. All are welcome. A small donation helps cover refreshments. More info, call 613-733-3156 x229, www.rideaupark.ca

Come join your voices to the worship services that Georgina leads monthly at the following retirement residences:

Maplewood on Tuesday, January 21 and February 18 at 11:00 a.m.

Clementine Towers Friday, January 31 at 2:00 p.m.

Oakpark on Wednesday, February 5 at 1:30 p.m;

Hunt Club Manor on Thursday, February 6 at 11:00 a.m.

Billings Lodge on Tuesday, February 11 at 10:45 a.m.

Our own **La Bell Ensemble**, directed by Jeanette Caton, will be playing a concert at Gloucester Presbyterian Church (91 Pike Street) on Saturday January 25 at 2:00 p.m. This concert is part of the "Music in Greenboro" program. Admission is by donation.

Shrove Tuesday Pancake Supper: Tuesday, February 25. Everyone is invited to a Pancake Supper at Rideau Park United Church, 2203 Alta Vista Drive, starting at 5:30 p.m. The Supper is hosted by the 28th Ottawa Scouts, with a menu of pancakes, sausages, veggies, and dessert. Tickets are Adults: \$10.00, Children: \$6.00, and are available from the church office (Mon-Fri. 9am-4pm) and at the door. For more info please call : 613-733-3156 ext. 229 or www.rideaupark.ca

Parents, youth, and the young at heart: It's Musical Theatre time again!!! After the success of last year's ***Oh, Jonah!***, this year's production of ***The Jungle Book*** is sure to be a hit! This is a larger scale show, which will require 32 (or more) actors, singers and dancers, as well as backstage help from teens and adults. The performance will be at **Rideau Park** on **Friday, May 29** and 30 (*if 2 shows are warranted*). **Rehearsals and signup begin in February**, primarily on weekends. For a sample rehearsal schedule, or to ask questions, please contact Music Ministry Coordinator, Iain Macpherson (choirdirector@rideaupark.ca; 613 733-3156).

Rendezvous 2020: The UCC's triennial youth and young adult national gathering will be held in Calgary next summer, from August 11 to 14. Rendezvous is for young people age 14 and up and it is really a great experience. Questions? Speak to Steve or Elizabeth.

RPUC Website: Go to rideaupark.ca for all the latest church news and information on upcoming events, and join us on Sunday mornings for our live streaming service. This site is maintained by the office staff and volunteers.

The next deadline for submissions to ChurchPost is Friday, February 7 at NOON. Please email your notices to Nancy McPherson at nmcpherson@rogers.com.

Activities Calendar: Jan 19-25		
<u>Sunday:</u>		
Meditation	9:10am	B-9
Sunday Service	10:00am	Sanctuary
Drums Alive	11:30am	B-13
Writers of RP	3:00pm	Sanct/Parlour
<u>Monday:</u>		
Circle	9:30am	B-9
Knitting	12:30pm	Parlour
Ringing Praise	6:30pm	Sanctuary
Touch of Brass	7:15pm	Sanctuary
<u>Tues:</u>		
50+ Fitness	9:00am	Beecroft
Tai Chi (new!)	10:15am	Parlour
La Bell Ensemble	7:15pm	Sanctuary
<u>Wednesday:</u>		
Tai Chi	4:00pm	B-12
Gentle Yoga	5:00pm	B12
Session	7:30pm	Parlour
<u>Thursday:</u>		
50+ Fitness	9:00am	Beecroft
Quilters	9:30am	Parlour
Euchre	1:00pm	Parlour
Strategic Planning	6:00pm	B-9
HearSay	5:45pm	Beecroft
Xpression Teen Choir	6:15pm	B-12
Cherubs	6:45pm	B-12
Joyful Noise	6:45pm	B-12
Noteable Sound Chimes	6:15pm	Sanctuary
GraceNotes	6:45pm	Sanctuary
Chancel Choir	7:30pm	Sanctuary
<u>Friday:</u>		
Gentle Yoga	9:30am	Parlour
Chair Yoga	11:00am	Parlour
<u>Saturday:</u>		

Coffee Hour Volunteer	
Jan 19	Carolyn & John Scollick Karen Ott & Bruce Dixon
Jan 26	Beth Campbell-Keyes Bob & Margo Roden Sandra Graham
Feb 2	Wayne & Janet Bond Daryl & Garry Lindberg Kathy Comfort
Sunday Duty Officers	
Jan 19	Nancy Begg-Durkee
Jan 26	Merina Shulist
Feb 2	Lynn Sherwood
Counting Volunteers	
Jan 20	Rob Hagglund
Jan 27	Garry Lindberg
Feb 3	Bob Roden
Main Office is open Monday to Friday, 9am-4pm Visit our website: rideaupark.ca Prayer Chain: Ext 227 or prayerchain@rideaupark.ca	

Church Staff: 613-733-3156			
Elizabeth Bryce - Minister	Mon-Thurs	ext. 224	ebryce@rideaupark.ca
Steve Clifton - Minister	Tues-Fri	ext. 225	sclifton@rideaupark.ca
Georgina Fitzgerald - Minister	Tues-Thurs	ext. 226	gfitzgerald@rideaupark.ca
Andrew Ager - Organist	Thurs-Fri	ext. 223	organist@rideaupark.ca
Iain Macpherson - Music Ministry Coordinator	Wed-Thurs	ext. 301	choirdirector@rideaupark.ca
Debi Brown - Administrator	Mon, Wed-Fri	ext. 228	administrator@rideaupark.ca
Debby Gerro - Administrative Assistant	Tues-Fri	ext. 229	adminassist@rideaupark.ca
Geoff Scollick - Custodian	Mon-Fri	ext. 229	custodian@rideaupark.ca

Mon-Thurs	ext. 224	ebyce@rideaupark.ca
Tues-Fri	ext. 225	scclifton@rideaupark.ca
Tues-Thurs	ext. 226	gfitzgerald@rideaupark.ca
Thurs-Fri	ext. 223	organist@rideaupark.ca
Wed-Thurs	ext. 301	choirdirector@rideaupark.ca
Mon, Wed-Fri	ext. 228	administrator@rideaupark.ca
Tues-Fri	ext. 229	adminassist@rideaupark.ca
Mon-Fri	ext. 229	custodian@rideaupark.ca

Tues-Fri	ext. 225	scifton@rideaupark.ca
Tues-Thurs	ext. 226	gfitzgerald@rideaupark.ca
Thurs-Fri	ext. 223	organist@rideaupark.ca
Wed-Thurs	ext. 301	choirdirector@rideaupark.ca
Mon, Wed-Fri	ext. 228	administrator@rideaupark.ca
Tues-Fri	ext. 229	adminassist@rideaupark.ca
Mon-Fri	ext. 229	custodian@rideaupark.ca

Tues-Thurs	ext. 226	gfitzgerald@rideaupark.ca
Thurs-Fri	ext. 223	organist@rideaupark.ca
Wed-Thurs	ext. 301	choirdirector@rideaupark.ca
Mon, Wed-Fri	ext. 228	administrator@rideaupark.ca
Tues-Fri	ext. 229	adminassist@rideaupark.ca
Mon-Fri	ext. 229	custodian@rideaupark.ca

Thurs-Fri	ext. 223	organist@rideaupark.ca
Wed-Thurs	ext. 301	choirdirector@rideaupark.ca
Mon, Wed-Fri	ext. 228	administrator@rideaupark.ca
Tues-Fri	ext. 229	adminassist@rideaupark.ca
Mon-Fri	ext. 229	custodian@rideaupark.ca

Wed-Thurs	ext. 301	choirdirector@rideaupark.ca
Mon, Wed-Fri	ext. 228	administrator@rideaupark.ca
Tues-Fri	ext. 229	adminassist@rideaupark.ca
Mon-Fri	ext. 229	custodian@rideaupark.ca

Mon, Wed-Fri	ext. 228	administrator@rideaupark.ca
Tues-Fri	ext. 229	adminassist@rideaupark.ca
Mon-Fri	ext. 229	custodian@rideaupark.ca

Tues-Fri	ext. 229	adminassist@rideaupark.ca
Mon-Fri	ext. 229	custodian@rideaupark.ca

Mon-Fri **ext. 229** **custodian@rideaupark.ca**