

Rideau Park United Church

2011 Annual Report



Embroidery on Paper (May 2007) by Rochelle Handelman, Ottawa

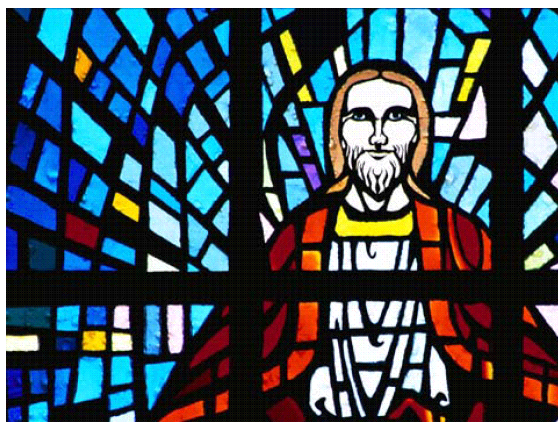
1951 - 2011

**Sixty Years
Young**

2203 Alta Vista Drive
613-733-3156

Ottawa, Ontario K1H 7L9
rideaupark.ca

In Memoriam



Members, Adherents and Friends of Rideau Park

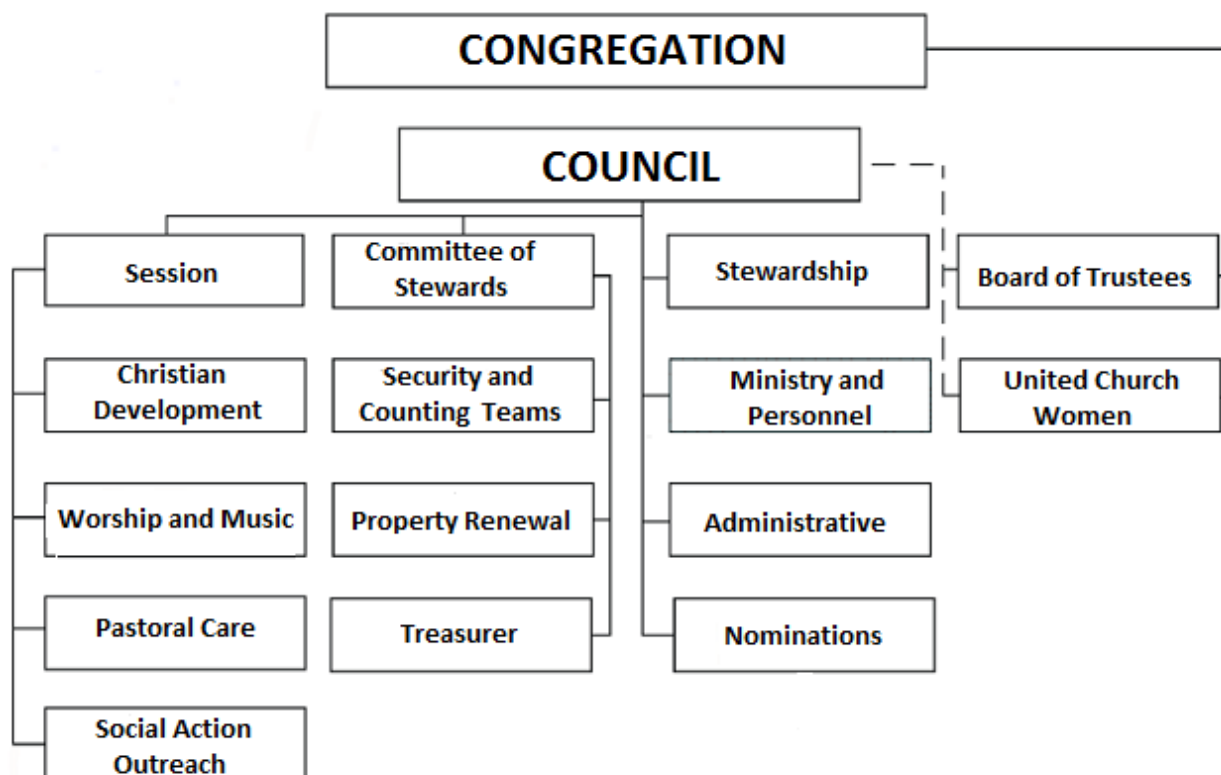
Rita Viola Atkins	Hazel Alva Joy
Adeline Barber	Farida Kristjanson
Debra Kay Becker	Ronald Robert Leavitt
Edward Gerald (Ted) Blake	Flora Ethel McKennitt
Elizabeth Helen Blanchard	Gaye Jeune McOnie
Arline Brackenridge	Oswald McRostie
Doreen Flora Mildred Cairns	Claire Mehta
Emily Elizabeth Leigh Coker	Liliane Margot Mignault
Linda Susan Curran	Violet Nord
Mary Dohoo	Joyce Renton
Blanche Marie Evans	Annis Gwendolyn Rice
George Evans	Donald Alexander Rutherford
Gordon Lewis Findlay	William Barry Stratton
Mary Fraser	John Edward Sutherland
Joe Goods	Norma Jean Torrens
Harold Hayes	Robert James Traill
Rosamond Eleanor Hunt	

I am the resurrection and the life. Those who believe in me, even though they die, will live, and everyone who lives and believes in me will never die.

John 11: 25, 26

In Memoriam.....	Inside front cover
Contents.....	3
Leadership at Rideau Park	4
Organization Chart of Governing Bodies	5
Statistics 2011	5
Journey of Faith	5
Mission Statement of Rideau Park United Church.....	6
In Memoriam Donations	6
Letter from the Staff.....	7
Reports:	
Council	8-10
A Congregation Growing in Spirituality	11
Council - Communications Task Group	12
Council - Congregational Development Task Group	13
Ottawa Presbytery	14-15
Session	16
Board of Trustees.....	17
Trustee Summary Report on Funds	18
Stewards	19-21
2011 Fund Account Reconciliation	21
2011 Financial Statements for Rideau Park United Church	
Statement of Financial Position	22
Statement of Ministries and Programs Fund	23-24
2011 Rideau Park Budget Presented by the Committee of Stewards	25
Apportionment of Ministry and Personnel Costs.....	26
2011 Property Renewal Fund Report.....	27
2011 Property Renewal Plan.....	28
United Church Women.....	29-31
2011 Statement of UCW General Account Report.....	32
2011 UCW Furnishings and Memorial Reserve Account Report.....	32
Christmas Treasures Bazaar.....	33-34
Committees of Council:	
Stewardship.....	35-36
Stewardship Pledging Record	36
Mission and Service - 2011 Actual Givings	36
Ministry and Personnel.....	37
Administrative	38
Nominations	39-42
Committees of Session:	
Worship and Music	43-44
Chimes.....	44
Handbells	45
Christian Development.....	46-47
Sunday School Financial Report	47
Youth and Young Adult Ministry	48-49
28 th Ottawa Scouts	49-50
Pastoral Care	51
Social Action and Outreach.....	52-53
Minutes of the 2011 Annual and Congregational Meetings	54-63

MINISTER EMERITUS	Rev. Dr. Ott McKennitt	
STAFF	Rev. Steve Clifton Rev. Elizabeth Bryce Rev. Georgina Fitzgerald Richard Glasser Debi Brown Erin O'Neill Paul Sorg	Minister of Christian Family and Worship Minister of Community and Worship Minister of Pastoral Care Director of Music Administrator Administrative Assistant (Jan.- Dec.) Sexton
COUNCIL	Wayne Bond Mary Lynne Holton Lisa Sadler Doug Robinson Karen Humphreys Cameron Jeffrey Jeff Allo Bob Roden Tony Bernard Brian Hamilton Doreen Hamilton Karen Lamb Gavin Currie Barbara Robinson Nancy McPherson Sandra Weedmark Greig Scott	Chair Vice-chair Secretary Chair of Session Session Representative Session Representative Chair of Stewards Stewards' Representative, Treasurer Stewards' Representative Chair of Stewardship Chair of Ministry and Personnel Ottawa Presbytery Representative Chair of Board of Trustees President of United Church Women Chair of Administrative Member at large Member at large
COMMITTEES		
SESSION	Doug Robinson Brian Neal	Chair Clerk
Sub-committees of Session		
Christian Development	Drew Presley	Chair
Worship and Music	Shailja Verma, Patricia Whitridge	Co-chairs
Social Action and Outreach	Sandra Weedmark	Chair
Pastoral Care	Alyce Dunnewold	Chair
STEWARDS	Jeff Allo	Chair
Sub-committees of Stewards		
Treasurer	Bob Roden	
Property	Rod Hagglund	Chair
Counting Teams	Andrew Jeffrey	
Property Renewal	Brian Hamilton	
STEWARDSHIP	Brian Hamilton	Chair
NOMINATIONS	Shanti Inman	Chair
MINISTRY AND PERSONNEL	Doreen Hamilton	Chair
ADMINISTRATIVE	Nancy McPherson	Chair
BOARD OF TRUSTEES	Gavin Currie	Chair
UNITED CHURCH WOMEN	Barbara Robinson	President
PRESBYTERY REPRESENTATIVES	Brian Irvine Don Melick	Karen Lamb Chris Inrig
ENVELOPE SECRETARY	Barbara Jeffrey	



Number of households as of December 31, 2011	546
Total number of persons as of December 31, 2011	1,268
Members received through Transfer of Certificate	0
Members removed through Transfer of Certificate	0
Persons removed by death	20
Number of weddings	6

Colton Michael Charles Hines

Anadi Juyal-Bozza

Lexi Ann Leary

Seth Thorin Mount

Ryan James Saunders Scobie

Logan James Todd

Carson Jon Noah Wright

Wyatt Elliott Emery Hines

Graeme Arthur Kaye

Madison Flora LeClair

Eoghan Casey Pascoe

Samuel Kenneth Taylor

Jahnea Olivia Williams

Rideau Park United Church is a family of people who joyfully proclaim a loving God as revealed in Jesus Christ.

As caring members of this church, we seek to do this by:

- ✝ joining together in worship, prayer and music;*
- ✝ reading and studying the Bible;*
- ✝ living a Christian life;*
- ✝ nurturing both young and old in Christian education programs;*
- ✝ seeking justice for everyone; and*
- ✝ continually sharing our faith, hope, talents and resources with our community, country and the world.*

Arnold Barry
Debra Becker
Ted Blake
Arline Brackenridge
Pat Hall
Johanna Koolhaas
Flora McKennitt
Harris and Mary Mossman

It's Wednesday in the week before Christmas. Our building pulses with activity. Volunteers are managing our annual Christmas outreach program, Christmas Cheer. Steve, John and Carolyn are loading carts with groceries. Gretchen is coordinating drivers. Marilyn and Jim are working the phones. Many others, of all ages, are moving food hampers to cars.

Doreen is working on Christmas bulletins in the office. Barbara is bringing Christmas greetings to staff. Don and Brian are fixing a software problem so that a video can be played in the sanctuary at an afternoon funeral. Bas has come to help usher. We know that, in the evening, Sharon will lead worship in the chapel.

On a Wednesday before Christmas we experience the blessing of serving a church gifted with so many amazing volunteers. This particular Advent Wednesday is a really busy day. But it's not exceptional. Our church is often alive with activity. On any given day: bell choirs chime; choirs sing and quilters quilt. Through the week pies are made, groups gather, meetings are held and food and conversation is shared. So much of what goes on in this place is made possible by committed people who freely give of their time and talents. We are so blessed.

Shane Claiborne recently wrote "The Church is not something that we attend. It's something we are..." Your church staff sees the truth of this statement day by day. Thank you to all of you for *being* the church in 2011. May God bless us as we work in ministry together in 2012.

Elizabeth

Georgina

Richard

Debi

Paal

Erin

Steve

Council has met six times since the last report. The Council membership is as follows:

Chair	Wayne Bond
Vice-Chair	Mary Lynne Holton
Secretary	Lisa Sadler
Chair of Session	Doug Robinson
Session Representatives	Karen Humphries Cameron Jeffrey
Chair of Stewards	Jeff Allo
Steward Representatives	Bob Roden (Treasurer) Tony Bernard
Chair of Stewardship	Brian Hamilton
Chair of Ministry and Personnel	Doreen Hamilton
Ottawa Presbytery Representative	Karen Lamb
Chair of Trustees	Gavin Currie
President of UCW	Barbara Robinson
Chair of Administrative Committee	Nancy McPherson
Members at Large	Sandra Weedmark Greig Scott

The Ministers and the Church Administrator are ex-officio, non-voting members.

According to our Constitution, Council is responsible for exercising leadership and management at a strategic level. The leadership function encompasses long range planning and defining congregational priorities, while the management function provides strategic guidance for the volunteer bodies, committees and church staff responsible for church programs and activities.

With respect to the longer term, Council and Stewards, in early 2011, committed to taking action to reduce the small, but chronic and growing, year-end deficits in the Ministry and Programs Fund. We consulted with the congregation through a Financial and Stewardship Survey (181 responses) in February, and discussed the survey results and possible solutions with the congregation at two well-attended Town Hall meetings in March and May. Council, Stewards and staff held a day-long Retreat to fully review the survey results, the congregational input, and the financial and resourcing options for the next few years. This effort has resulted in new revenue generating initiatives, expenditure reduction actions, changes to the Stewardship Campaign, and improvements to the frequency and presentation of financial information, in support of the Ministry and Programs (M&P) Fund. Examples of these initiatives, some already being undertaken and others planned, include:

- Increasing revenues through fundraisers, with a portion directed to the M&P Fund, including the 60th Anniversary Cookbook, the Lobster Supper, the RPUC Café, and the spring BBQs; enhancing revenues through stronger promotion of church facility rentals, including the Sanctuary for recitals; researching other areas for generating revenues, such as providing funeral visitation at Rideau Park.

- Reducing expenditures through actions such as individual Observer subscriptions, Christmas Cheer coordination by church staff (trial run), and conduct of the annual financial review by qualified volunteers.
- Focusing the message in the Stewardship Campaign more towards the needs of the Ministry and Programs Fund, and providing the option of giving to “the Area of Greatest Need.”
- Reporting to the congregation more frequently on Rideau Park’s financial outlook; holding a 2012 budget consultation at the Fall Congregational Meeting in October.
- Placing more emphasis on communications, congregational development and welcoming to increase our presence in the community and attract new members.
- Development of an Inventory of Ministry (completed by Rev. Steve Clifton) to illustrate the numerous and diverse ministries and activities undertaken in our church with the support of the Ministry and Programs Fund.

Although a number of these actions are directed at the medium term, the actual 2011 deficit came in lower than the budget projection, and the preliminary budget for 2012 looks more promising.

To emphasize the importance of the strategic overview function of Council, a new agenda item, “Council Discussion,” was added to most Council meetings. Topics covered were: Rideau Park as a Program Church, benefits and challenges, led by Rev. Steve and Rev. Elizabeth (March); Congregational Development, engaging the community through an open house event (June); possible changes to the Stewardship Campaign (June); presentation and review of the draft Long-Term Property Renewal Plan, 2012-2019 (September); and, creating a safe and welcoming space in the church for the LGBT community, discussion led by Rev. Steve (November).

In 2011, \$6,816 was available from the Rideau Park Foundation Fund for projects within the congregation as well as outreach projects. One application was received. In May, Council approved \$2,100 to financially support Rideau Park and Presbytery youth in attending Rendez-Vous 2011, the UCC National Youth Conference. In all, seven participants from Rideau Park and 40 from Ottawa Presbytery attended the Conference in August. Rideau Park received a thank you note for our support from the Presbytery Youth and Young Adults Committee.

In June, Council approved the hosting of the Ottawa GO Project for nine days in mid summer 2012 – a new UCC youth and young adult program emphasizing hands-on community development experiences. Since that time, the UCC GO organizers have postponed the Ottawa GO Project to the summer of 2013.

In November, Council approved new, more detailed Guidelines for the Operation of the Reserve Fund (previously called the Endowment Fund) as prepared by the Trustees. It was also agreed that the Trustees would take responsibility for the promotion of gifts to the Rideau Park Foundation Fund.

In May, Council and Stewards received a proposal from the Great River School (Waldorf) to rent classroom space at Rideau Park for 10 months/year. The School was looking at renting all of the downstairs rooms, the overflow parking lot for outdoor activities, and occasional use of upstairs rooms. All church contents would need to have been moved out of the rented rooms. Council struck an Ad Hoc Committee, composed of representatives from Stewards, Session, Council,

Ministry and Administrative staff, to review this proposal. After investigation and due consideration, the Committee recommended that we not proceed further with negotiations, due to the significant disruption that would be caused to our Sunday School and Music programs, the loss of flexibility for church activities, reduced ability to serve the local community, and the loss of current rental revenue.

On behalf of Rideau Park, Council drafted letters of recognition and made several presentations during 2011. These included congratulatory letters presented in early June to Rev. Dr. Ott McKennitt on the 70th anniversary of his ordination as a United Church Minister, and to Rev. George Marr on the 50th anniversary of his ordination as a United Church Minister. On October 2nd, at their final church service with us, Council presented a Rideau Park afghan to Emmanuel United Church as a memento of their stay with us, and of the connection between the two congregations. In December, after his departure, a letter of appreciation was sent to Scott Inrig in recognition of his many years of dedicated service to Rideau Park, particularly to youth ministry.

Throughout 2011, Council continued to encourage the work of its Communications Team (est. 2009) and its Congregational Development Team (est. 2010) in their efforts to increase awareness in the local community about Rideau Park church services, programs and events. A key highlight was the Community Open House held in September. Please see the separate reports by Communications and Congregational Development.

Council continues the practice of recognizing the spiritual aspects of our activities and trying to ensure that they are kept in focus as we go about our business. This is accomplished in part by having different members of Council lead and participate in the opening reflection at each meeting.

I would like to thank members of Council for their support during the past year. I would also like to say a special word of appreciation to those members who are leaving Council at this time: Jeff Allo, Barbara Robinson and Sandra Weedmark for their contribution to Council during their respective terms.

On behalf of all Council members, I would like to take this opportunity to thank our church staff for all they do to make this congregation such an active, caring and spiritual place. We are indeed blessed to have such an experienced, committed and creative group of people. Finally, I would like to give a special vote of thanks to Erin O'Neill for her four years of dedicated service to Rideau Park, as she moves on to the next stage of her career.

Respectfully submitted,
Wayne Bond, Chair

Urban Holmes defines spirituality as a longing or emptiness that we feel within. Our own spiritual path is shaped by the ways in which we try to fill the void or in how we work to meet the longing. Our own spiritual work is found in what we do to connect to God.

Spirituality is a strong and vibrant thread that is woven through all that we do at Rideau Park. From Youth Bible Study to our outreach work, from choir practice to committee meetings, we are always seeking to be in communion with the Holy One and to help others to find that which will satisfy their souls and nourish their spirits.

In 2011 there were a number of events and activities that were directed at deepening the spiritual life that we share. Elizabeth led a number of book studies, in spring and again in the fall. A spirituality retreat was held in spring; about 15 adults gathered at Galilee in Arnprior for a time of fellowship, reflection and renewal. In the fall, Sharon Sanderson offered another in a series of quiet days, a chance to retreat on a Saturday in our own church.

Annually in the season of Lent we try to place a special emphasis on spiritual growth. Meetings are cancelled in order to make room for God. A group gathers on Saturday morning to share food, fellowship and study. On Wednesday nights we meet for midweek services and then have a study session. Our Labyrinth is also made available in each week of Lent. The Spirituality group had as its annual Lenten project : A Mitzvah a Day. In Judaism, the word Mitzvah refers to a moral deed performed as a religious duty. So the term mitzvah has also come to mean “to express an act of human kindness.” We were encouraged to do a kind or caring thing for another every day in Lent.

In January we had a 6 week course: An Introduction to Christian Meditation. We had 24 participants from Rideau Park and beyond.

It is worth noting that all of our studies go online. If a session is missed or if someone cannot get out to participate, all of our Bible, book and topical studies have a written component posted on or linked to on our church website. The Meditation course is available on line as well. It's almost like being there.

We also have a congregational prayer chain. The prayer chain is a place to bring prayers and concerns in confidence so that others in our faith community can pray for us and those we love. If you would like to join the chain, please speak to our coordinator, Doreen Hamilton.

We have plans for some new initiatives in 2012. We look forward to another year of growing in the spirit.

Blessings,
Reverend Steve Clifton

Council formed the Communication Task Group, now known as the Communication Team, in 2009 with the goal of improving communication both within the church and in the wider community.

Members of the Communication Team for 2011 comprised those involved in various facets of Rideau Park Church communications, including Marcia Gosse (editor, Churchpost), Barry Dewis (advertisements for Vistas), Nancy McPherson (Chair Administrative), Marilyn Law (past Chair Council), Wayne Bond (Chair of Council), Scott Inrig (Webmaster) Debi Brown (Administrator), Rev. Elizabeth Bryce, Erin O'Neill (Admin Assistant), and Mary Lynne Holton (Chair of Communication Team).

It is not the intention of the group to take over communications from the various communities in the congregation and the staff but rather to deliver and facilitate a broader more organized approach to communication and advertisement at RPUC. The team continues to provide support, guidance, coordination, ideas and to fill in any gaps.

During 2011, the group both continued and initiated a range of activities:

- The weekly advertisement in the EMC Church Directory and the monthly advertisement in the Vistas;
- Continued to identify key events and to advertise to the wider community in the Citizen, "Our Town," EMC, "What's On This Week," Vistas Community Calendar, and News and Events on the RP website;
- The congregation received monthly emails informing them of upcoming events and services;
- Live streaming of the audio at 9:30 Sunday service and archiving of the sermons. A more recent initiative has been to collect email addresses from concert attendees who wanted to be informed by email of upcoming concerts at Rideau Park Church;
- In order to facilitate communication by others, we continued to provide a Communicators Checklist, Print and Electronic Media Contact List, which were updated in August and February and then distributed to all committee chairs and event leaders;
- A "Donate Now Button" was added to the RPUC website. We are registered with Canada Helps, an organization that facilitates on-line donations to a registered charity. Recognizing the changing demographics and technology, many regard e-giving as a service that makes the donation process more convenient;
- Evaluation of the effectiveness of our communications continued through surveys of visitors to events such as the Nearly New Sale, The RP Bazaar and the Dianne Ferguson Concert;
- Review and guidance for key RP communications (RP Activity Booklet, Christmas Events Brochure);
- A Welcome Brochure and card with contact information were distributed to newcomers at church services and can be found in the display racks.

Priorities for 2012:

1. Establish a small group of writers to draft articles/take photos about RP events.
2. Review the 2009 written protocol with content and technical guidelines for the website.
3. To develop an addendum, 2012 – website guidelines for the process of updating content on the web by the webmaster.
4. To aim for a longer time frame for the RP web calendar.
5. Address the technical aspects of setting up a different framework and working with a transition to a different platform, taking into consideration continuity, user friendliness, cost and bandwidth.

I would like to express sincere thanks to the members of the Communication Team for their hard work and commitment this past year.

Respectfully submitted,
Mary Lynne Holton, Chair

The main focus of the Congregational Development Task Group in 2011 was to extend the invitation to families in our neighbourhood to join us here at Rideau Park United Church.

One of the ways that we extended this invitation was via the Rideau Park United Church Bookmark. The intention of the bookmark is to provide non or infrequent church attendees with a useful takeaway that highlights the themes and programs that Rideau Park has to offer. The call to action is to attend a service or to visit our website. Bookmarks were distributed at Easter/Christmas services and at special events throughout the year. The bookmark is now in its third production run of 1,000 units per run.

A second way that we extended the invitation in 2011 was through the development of a Rideau Park United Church Easter Postcard. The postcard was hand delivered to 500 households in the vicinity of the church and invited recipients to “Hear the Story and Explore the Meaning”. Upcoming special events were also highlighted on the card.

A third way in which the invitation was extended was via the Rideau Park United Church Open House held on Sunday, September 18th. A half page ad was placed in Vistas; there were Community Calendar mentions in Vistas, EMC, Ottawa This Week and the Citizen; there was a Website posting; Kijiji posting; and exterior signage. The Open House featured a visitor welcome table with church handouts, as well as program and services information tables. There was a steady flow of Rideau Parkers and some visitors to the program displays and about 15 people (singles and couples) identified themselves as from the community.

Rideau Park is not alone in wanting to encourage increased levels of United Church attendance. Learning circles consisting of other churches from across Canada have been formed and will be sharing learnings throughout 2012. Each one of us can do our part by being welcoming/inclusive with visitors and with those we may not know very well. We can also extend a personal invitation to friends, neighbours and family to come and see what Rideau Park is all about.

Respectfully submitted,
Greig Scott, Chair

Ottawa Presbytery Facts: There are 60 pastoral charges with 76 congregations. They are served by 52 order of ministry; 5 serving in designated lay ministry positions; 6 retired ministry personnel serving in supply appointments; 1 student supply in a ministry based learning site; 51 retired order of ministry; 5 order of ministry serving as Canadian Forces Chaplains; 14 retained order of ministry (5 of whom serve in other United Church appointments); 117 lay presbyters appointed by congregations; 8 lay members at large; 6 lay members by virtue of status. Total membership 236.

There are currently 7 candidates for ordered ministry and 4 people in the Inquirer's phase. Rideau Park's clergy are members of Presbytery as are the Lay Presbyters: Chris Inrig, Brian Irvine, Karen Lamb and Don Melick.

There are a number of ministries supported by the Presbytery: Centre 507; West End Chaplaincy; Carlington Chaplaincy; Carleton Ecumenical Chaplaincy; Algonquin Campus Ministry Presbytery; Chaplaincy with the Ottawa Hospital and the Queensway Carleton Hospital; Secondary School Spiritual Care Program (a pastoral care program of volunteer interfaith chaplains in the Ottawa—Carleton Public School Board).

Seed money is also given to outreach initiatives—in 2011 the recipients were in Sandy Hill—a Yoga program open to those living on the street and a second program for the Overdose Prevention Project run by the Sandy Hill Community Health Centre.

General Information: This summer General Council 41 will meet in Ottawa August 11–18, 2012 at Carleton University. There will be many opportunities for local United Church people and congregations to participate.

The Presbytery continues to support the Resource Centre. It provides a lending library, an ordering service with the United Church and has a small inventory on hand.

2011 Meeting Summary: There were 9 regular presbytery meetings. They were held at Woodroffe, Orleans, Knox, Barrhaven, Shawville, City View, Manotick, Stittsville and Aylmer United Churches.

The themes for the two program meetings were "What on earth is the Church up to?" and focused on projects in local congregations that were engaging theology and ecology. The December meeting focused on gathering in Advent worship with a Celtic flair and learning a little about Iona as a place of pilgrimage.

At the seven regular meetings business was conducted and the following are some of the agenda items that were discussed:

- whether to engage in discernment about the Ottawa Presbytery becoming an Affirming Ministry. Rev. Susan Ivany from Thunder Bay and Cambrian Presbytery (the first Affirming Presbytery) shared with the court the experience of Cambrian and the journey that had been taken to reach the decision to be an Affirming Ministry.
- the Youth and Young Adult search committee recommended and the court approved that the Rev. Hilary Merritt be engaged as the new YAYA minister and subsequently the court covenanted with her.
- the court relicensed those who are recognized as lay worship leaders.
- a presentation by Rev. Dr. Tom Sherwood on research focusing on the relationship between the Echo Generation and the church.

- the youth and young adults who attended Rendez-vous, a United Church national gathering for youth and young adults reported on their experience.
- the Church in Society committee engaged people in learning about “Covenanting for Life”, a call for United Church ministries to be more intentional in their engagement with justice issues.

Youth and Young Adult Ministry: 2011 was another busy year for Youth and Young Adult Ministry in Ottawa Presbytery. The YAYA committee, under Steve Clifton’s leadership, worked hard to make sure that programs continued during the transition time till the new YAYA minister arrived.

In February, Worshiplode was a great success, with many visiting groups from across Ontario and Quebec. What a wonderful way to make new friendships, have fun with Winterlude activities and celebrate in worship!

The theme for Camp Awesome this year was “God’s Wild World.” Close to 50 counsellors and many congregational volunteers worked hard to bring lessons of faith to many children in camps sponsored by 19 congregations.

August 11th to 14th saw a large group of close to 50 participants from Ottawa Presbytery in Toronto for Rendez-vous, the national gathering for youth and young adults and their leaders. There were keynote speakers, workshops and many opportunities for celebrating their faith and discerning what it means to express their faith within the United Church.

In October a large gathering of youth, young adults and others came together to worship at “THE POINT”. The theme was “Walk the Talk” and built on the Rendez-vous experience as they considered what it means to be faithful Christians in how they relate to others.

Respectfully submitted,
Karen Lamb, Lay Presbytery Representative

The Session, made up of church Elders, is responsible for overseeing the spiritual life and interests of the congregation. The Session Committees are: Social Action and Outreach, Pastoral Care, Christian Development, Music and Worship. Reports from individual committees are found in this annual report. Many Elders serve on these committees. Elders also greet and usher at Sunday Worship Services and serve Communion. Some act as Duty Officers during the week and on Sunday mornings. Elders continue to do visitations and make phone calls to people in their Elder's district. A number of people have requested that their names be put on email contact lists and this has reduced some of the demand on Elders for phone calls and visits and is working well.

A key initiative this year has been continued discussion of ways to develop a welcoming culture. Everyone needs to talk to strangers in the church. "Welcoming" needs to reside with a Committee to ensure that we follow through on ideas to welcome new people. The question of welcoming was discussed at all Session meetings this year. This year Session discussed a Remit from General Council and will vote on it in January. Session has agreed to re-examine Rideau Park's marriage policy with respect to same sex marriage.

The lists of baptisms, marriages or funerals at Rideau Park are noted at each session meeting and are listed elsewhere in this Annual report. The names of retiring Elders and those of new Elders are listed in this report as well.

We thank Brian Neal, the Clerk of session, for providing faithful and excellent service to the session. We are also grateful to Jessie Weldon-Gibb for her excellent work in maintaining the Elder district lists and identifying any people who should be moved to the pastoral care list.

Respectfully submitted,
Doug Robinson, Chair

The Trustees, on behalf of the congregation, hold title to the deed of the church property, and are responsible for ensuring such property is adequately maintained and used in accordance with the objectives of the United Church of Canada. In addition, the Board administers a number of funds established at Rideau Park under the direction of the Rideau Park Council and/or its committees. Revenues of these funds derived from donations and the subsequent investment earnings are as follows:

The **Douglas Brown Memorial Fund** is used to support social activities for the physically and mentally challenged.

The **Rideau Park Foundation Fund** has been established to serve as a permanent source of supplementary funding for special needs at the church. This was the fourth year that money from this fund has been eligible for disbursement. Half the donations to the fund in 2010 combined with investment earnings and unspent funds from 2010 made \$6,815.96 available for eligible projects in 2011. Two applications for projects were approved by Council totaling \$2,100.

Investment earnings from the **Dora Helmkey Legacy Fund** are turned over to the Committee of Stewards for use at its discretion.

The **Karl Rasmussen Fund** is used to assist people undertaking full-time studies directed towards full-time service in the Christian Church. Only income earned in a given year may be used for this purpose. Income becomes part of capital if not used in the current accounting period. In August, \$1,000 of interest from the fund was given to Wendy Tarry to assist her in meeting the costs of her theological studies.

The **Reserve Fund** (formerly the **Endowment Fund**) was established in 2010. It was established with \$100,000 received from the Hancock Estate and a small portion of the annual receipts from the Britt Estate. This year a further \$33,000 from the Hancock Estate combined with \$1,300 from the Britt Estate was added to the Reserve Fund. The investment earnings from this fund and the principal, if necessary, are available for Council to deploy as circumstances warrant.

Income from the **Britt Estate** is used, as Council deems appropriate. This year \$13,000 was received and Council decided that 10% of this income and 10% of the 2012 funding from this estate will be added to the Reserve Fund.

Members of the Board: Gavin Currie (Chair), Ed Boothe, Norm Edwards, Bob Elliott, Murray Ferguson, Bas Groeneweg, Daryl Lindberg, Les MacLauchlan, Jacqueline Newton, Keith Harris and Rev. Elizabeth Bryce, ex-officio.

Respectfully submitted,
Keith Harris

The Committee of Stewards is responsible for the management of church temporal and financial affairs. In 2011 the Committee met monthly, except for March, July, August and September. Last year the Committee members were:

Chair	Jeff Allo	
Secretary	John Durkee	
Treasurer	Bob Roden	
Administration Technical Support	Don Ford	
Counting Teams	Andrew Jeffrey	
Property	Rod Hagglund	
	John Scollick	
Representative on Council	Tony Bernard	
Security	Robert Blake ¹	
Stewardship Liaison/Property Renewal Fund	Brian Hamilton	
United Church Women representative	Mary Harris	
Members at large	Wayne Bennett	Steve Shipley
	Bill Ott	Gaveen Cadotte
	Nadia Senyk	
Staff Liaison	Debi Brown (<i>ex officio</i>)	
¹ <i>Non-member</i>		

Finance: Although 2011 was another challenging year financially, we were able to end the year with only a small deficit of \$6,791 in the Ministries and Programs Fund. The original budget called for a deficit of \$14,550. This improvement occurred despite an overall decline in givings. Tighter control of expenses, additional revenue from facilities rentals and special projects, such as the Cookbook project, and a reallocation of revenues from dinners, such as Lobsterfest, all helped to offset the decline in givings. In addition, the positive response from the congregation to our appeal for funds at year end, continued strong support from the UCW, and initiatives undertaken by the staff also contributed to our ending the year in a reasonably good financial position. Stewards are very grateful for all of the support provided throughout the year by individuals and groups within the congregation, and by staff members. The continued commitment to the Ministries and Programs of the Church was truly a team effort in 2011.

Stewards expect that the challenges faced in 2011 will continue through 2012. Membership has declined over the last several years, while costs continue to increase although at a very slow rate. We will continue to carefully manage budgets, and identify cost saving initiatives and new sources of revenue to help offset the impact of the decline in membership. Also, the 2012 Stewardship Campaign introduced a new category of financial designation - "Area of Greatest Need". Pledges made to this new category by many congregational members should give Stewards much needed flexibility in managing the Church's financial resources.

Last year Rideau Park's external accountants, Collins Barrow Chartered Accountants, conducted a full audit of the 2010 financial statements. Normally, they conduct a Review Engagement, however, every 5th year we have an audit performed. Because the auditors are unable to verify the completeness of donation revenue, as a matter of course each year, they issue a qualified opinion. However, other than this exception, the Auditors did report that the financial statements fairly presented, in all material respects, the financial position of Rideau Park United Church as at December 31, 2010 in accordance with Canadian Generally Accepted Accounting Principles. The accountants' full report is available at the church.

Rideau Park Property Renewal Fund: Property renewal expenditures in 2011 totalled \$45,770 leaving a balance of \$9,322 for projects in 2012. The balance includes the bequest from the Betty Green Estate that will be used to help refurbish the Library. The annual Lobster Dinner, a RP Café and a fall Roast Beef Dinner were this year's fundraising projects. For this year the fundraising revenues were shared with RP Ministries and Programs and Christmas Cheer. Total contributions and fundraising for the year were \$50,768.

This year we worked to finish Beecroft kitchen - installing the final upper cupboards, kitchen floor, mouldings and task lighting and renovating the storage cupboards. The oak roll-down shutter for the serving counter arrived in December. There was also exterior painting of Beecroft Hall and we acquired a used ride-on lawn mower for Paul. At year end we initiated work for the introduction of the overhead projectors in the Sanctuary.

Property Renewal – Planning for the Future: To help Stewards plan, an update on the 2004-11 Long Range Property Renewal Plan and a Draft Long Range Property Renewal Plan for 2012-19 were developed and shared with Council, Trustees, Session, UCW and at the Congregational Meeting.

Property renewal at Rideau Park is one of our distinguishing values. It's up there with hospitality, commitment to M&S, a strong UCW, inspiring music and worshipping together in community.

The criteria for this plan equate to different lenses to consider the needs for applying good stewardship to the maintenance, development and upkeep of our most significant physical asset. We are blessed with a great inheritance from the founders of this church. It was well designed, well built and well cared for. It was also well and fully paid for by those early church goers. It has appreciated in value over the decades.

The future for all denominations is fewer congregations and fewer places to worship. There are today too many places of worship and many that are poorly maintained with hidden liabilities and insufficient resources to sustain their properties. At Rideau Park there are no hidden property liabilities and no major expenditure that has not been considered. In the years ahead congregations will come together. Rideau Park can be at the heart of this reorganization. Our church building will be an asset.

It needs to be noted that property expenditures are investments that continue to pay dividends and provide utility for years after their expenditure - a roof, 25 years; the walkway and entrance, probably fifty, chancel floor fifty, as well as pew refurbishment etc.

Over the last 10 years a lot of work has been completed in the Sanctuary, Chancel and Chapel. The same can be said for interior projects – basement areas, Beecroft, Balcony and Kitchen Equipment is an ongoing requirement as well as the new Sanctuary roof, chimney repairs and parking paving.

The challenge to us is simply to maintain our inheritance in a state that is as good as or better than we received it. We are not the owners of God's house of worship at Rideau Park – we are but the humble caretakers of this church for a period of its history. May we hope that future generations will reflect back on the care that we have shown in our stewardship of this wonderful facility.

At year end the Stewards and Council recommended that the congregation adopt the Rideau Park United Church Long Range Property Renewal Plan 2012-19 to provide ongoing guidance to the Committee of Stewards for the upgrading and maintenance of our church facilities. This plan is recommended subject to annual approval of the yearly Property Renewal plans.

The 2012 Property Renewal Plan, a report on capital property improvements and expenditures, outlines our plans for 2012 and can be found on page 28 of this report

Other: During the year Stewards continued to work with staff to help ensure the on-going integration of Emmanuel United Church services and activities into day-to-day life at Rideau Park. Emmanuel moved back to their newly renovated building in October. In addition, Stewards worked on various policies and guidelines relating to privacy and property use, including facility rental and associated rates. Another significant task undertaken for Stewards was the annual Stewardship campaign.

Acknowledgments: Several congregational members who are not Stewards contributed extensive time and talent to the work of the Committee of Stewards, and the Stewards wish to convey their appreciation for these contributions:

Barbara Jeffrey, our Envelope Secretary;

Scott Inrig for maintaining Rideau Park's active Internet website for most of the year;

Norm Edwards for maintaining the sound system and coordinating its use for worship;

all the Duty Officers, who are coordinated by **Robert Blake**;

the many volunteers who serve on **Weekly Counting Teams**; and

the UCW, which again contributed to the financial health of the church and the M&S Fund.

I would also like to convey the Stewards' ongoing gratitude and appreciation to our church staff: Paul Sorg, who as custodian, maintains the property and assists with setup and take down for so many church activities, making the physical facilities one of our greatest assets for our members and our local community; Debi Brown, our Administrator, who maintains the financial records and looks after the day-to-day financial transactions making our job as Stewards much easier; Erin O'Neill, who has recently moved on to new employment, was the Administrative Assistant. Erin assisted with preparation of notices and appeals, the Stewardship Campaign, facilities rentals and other needs of Stewards and was a very important member of the Rideau Park team.

Respectfully submitted,
Jeff Allo

The purpose of United Church Women is to unite all women of the congregation for the total mission of the church and to provide a medium through which they may express their loyalty and devotion to Jesus Christ in Christian witness, study, fellowship and service.

TOTAL MEMBERSHIP	121		
Active members:	91	Associate/inactive members:	23
Circle Group:	6	Life memberships:	54

In Memoriam: Arline Brackenridge, Doreen Cairns, Hazel Joy, Farida Kristjanson, Flora McKennitt, and Norma Torrens

2011 EXECUTIVE:

Honorary Presidents	Rev. Elizabeth Bryce, Keva McKenniry
Past President	Lynda Coombe
President	Barbara Robinson
Vice President	Beverly Lee
Recording Secretary	Marcla Eastwood
Asst. Recording Secretary	Norine Wolfe
Treasurer	Marcia Gosse*
Archives, Literature, Communication	Kay Irvine
Bazaar Convenor	Jacqueline Newton
Community, Friendship, Visiting	Karin Ott
Finance and Mission	Mabel Bannerman
Flowers	Dorothy Valliant
Membership	Marg Sturley
Nominations	Lynda Coombe
Quilting	Ruth Ebertz
Social Functions	Vacant
Supply and Welfare	Marg McNally
Stewards' Representative	Mary Harris
Council of Women Representative	Joyce Ireland*
Presbyterial Representative	Ruth Stockley
* not members of UCW	

Unit Leaders:

Unit 1	Phyllis Bradt	Unit 6	Grace Shaver
Unit 2	Mabel Bannerman	Unit 7	Lynda Coombe
Unit 3	Nancy Begg-Durkee	Unit 10	Jessie Weldon Gibb
Circle contacts: Janette Hamilton Silcoff or Doreen Hamilton			

Executive Happenings and Responsibilities:

President: Chaired nine Executive meetings and four General Meetings; organized UCW Sunday; attended the Annual Ecumenical Day of Sharing and Reflection held at Rideau Park in October. This service was part of the preparation for the World Day of Prayer which will be held in March 2012. Attended the planning meeting for the World Day of Prayer and participated in the service. Attended Council meetings and reported regularly on the work of our UCW and future plans and events.

General Meetings: At the April General Meeting our guest speaker was Trudy Stephen who gave an excellent presentation of her trip climbing Mount Kilimanjaro in support of the Grandmothers to

Grandmothers Campaign (Stephen Lewis Foundation). At the potluck dinner in June, we were entertained by Stuart MacKinnon and Dianne Ferguson. In November, Jean Matheson told us about her work with the Order of St. Lazarus (leprosy). Our 4th General Meeting and candlelight service was held in December.

Past President: Participates in UCW Sunday and presentation of life memberships.

Corresponding Secretary: Sends and receives cards to and from people concerning Sympathy, Get Well, Congratulations and Thank you for flowers, lilies and cards etc. Sent 24 cards and received 46 expressions of thanks.

Treasurer: Thank you, Marcia.

Convenor Reports:

Archives/Literature/Communication: Four new additions to the library: "Paradoxes for Living" by Graham Standish, "The Case for God" by Karen Armstrong, "Putting away Childish Things" by Marcus Borg and "Speaking Christian" by Marcus Borg. A few photos have been added to our photo book.

Bazaar: Jacqueline Newton convened a very successful bazaar. It just gets bigger and better every year. A huge thank you to everyone who participated.

Community/friendship: Karen welcomes those who were baptised, confirmed or transferred into RPUC. The parents of newly baptised babies receive booklets. The mothers receive the UCW pamphlet. There were 11 baptisms. There were no new members.

Finance and Mission: The UCW supports 29 local charities and community services. 40% of year end funds go to Mission and Service, and 60% goes to RPUC Ministries and Program Fund. Contributions to Amnesty International, CNIB and Elizabeth Fry Society have been increased. Major purchases were a freezer and two stainless steel teapots. The parlour and the parlour kitchen are being considered for updates in the next few years.

The UCW and all who use the kitchen are very grateful to Brian and Doreen Hamilton in overseeing the renovations which include a new stove and fridge, cupboards and drawers complete with labeling.

Flowers: Thank you to those who delivered flowers on Sundays, Easter and at Christmas. Mabel Bannerman, Mary Harris, and Jessie Weldon-Gibb organize the names of recipients of the weekly flowers, lilies and the red poinsettias.

Nominations: The 2012 position of President has been accepted by Beverly Lee. The position of Bazaar Convenor is vacant.

Quilting: The quilters contribute greatly to UCW fundraising. A quilt raffle is being considered.

Supply and Welfare: Thank you to the congregation for recycling: 66 pairs of eye glasses for world eye clinics, postage stamps for Canadian Guide Dogs, Campbell soup labels to buy school supplies, pop can tabs for the Girl Guides at Parkdale, and used greeting cards. 44 pairs of mitts, 20 helmets, 8 scarves, 42 toques, 2 pairs of slippers, 3 tams, 2 pairs of socks, 2 sets of mitts and

toques, 5 sets of helmets and mitts have been knitted. These knitted items now go to the Ledbury and Banff Community Centres.

Council of Women: The Council of Women (OCW) is an affiliation of women's organizations whose aims are to identify emerging social problems affecting women and their families and to educate the members about these issues. Joyce gives a report of the activities on a monthly basis. Meetings are held at RPUC.

Stewards Rep: Thank you Stewards and Brian Hamilton in particular for making our kitchen renovations happen. We love our new kitchen.

Unit Reports: There are 6 units. Each unit has monthly meetings, usually a program involving films, videos, guest speakers or a topic for discussion. A time of Devotion is also an important part of the meeting.

Unit 1 – Makes jams and jellies for the bazaar.

Unit 2 – Hosts the Valentine Coffee Party and Bake Table; holds the Book Sale; manages the Deli table for the bazaar which entails 7 work parties making turkey and meat pies and pizzas. Thank you to those from the congregation who have helped, in particular, Steve Shipley and Jim Ebertz who man the pastry press.

Unit 3 – Holds the Spring and Fall Nearly New Sales, the Spring Fashion Show and dessert evening, the frozen apple pie sale and the Bake Table at the bazaar. Unsold clothes in good condition left from the Nearly New sales are given to the Salvation Army or to "Dress for Success".

Unit 6 – Contributes to and manages the Craft Table for the bazaar.

Unit 7 – Prepares baskets for the bazaar and has a Bake Sale. Held a very enjoyable Trivia Night.

Unit 10 – Manages the Lady's Boutique at the bazaar and caters to some Harmony Club dinners.

Circle Group – Holds a monthly book study. In the winter and spring we studied "The God-Powered Life" by Rabbi David Aaron and starting in the fall the book being discussed is "The Gift of Change – Spiritual Guidance for Living" by Marianne Williamson.

Samples of Programs – Some of the Unit meeting topics include: travel experiences in Spain, Portugal and Ireland, an interesting and amusing piece on the word "up", members telling stories of their lives, a study of the 23rd Psalm and discussion of situations where one might turn to the Psalm for help, a video from Spirit Connection about Terry Waite's experiences, and Palliative Health Services in Canada.

We are blessed with outstanding people who contribute so generously of their time, energy, and talents to enrich the lives of those of our congregation, staff and the community.

Thank you to the members of the congregation who helped with our major fund raising events; the Book Sale, turkey pie making, Nearly New Sales and last but not least, the bazaar!

We wish to say thank you to our President, Barbara Robinson, who for 5 years has carried out her duties with poise and dignity. A job well done!

The UCW would also like to take this opportunity to express our appreciation to Ministers, Rev. Elizabeth Bryce, Rev. Steve Clifton, and Rev. Georgina Fitzgerald for their support, and thank you to the staff, Debi, Erin and Paul and Lorraine Sorg, for their support and for helping in so many ways.

Respectfully submitted,
Marcla Eastwood, Recording Secretary

Rideau Park's Christmas Treasures Bazaar held on Saturday, November 5, 2011 was considered a tremendous success with the thinking that more people attended than the last few years. At 12:30pm the line was around the corner on Alta Vista Drive. A "How did you hear about the bazaar?" survey was carried out down the line. We learned, as usual, that informing our families, friends and neighbours is our #1 way of advertising, followed by our outdoor signage. Our Communications Committee placed ads in many neighbourhood papers and The Citizen.

A profit of \$21,801 (after expenses) was raised to support many worthy church projects.

Bazaar set up began on Wednesday, November 2 at 8:30 am with Paul Sorg, Harold Black, Brian Hamilton and Steve Shipley removing all furniture from all church rooms. Bazaar donations began to arrive requiring sorting. As Bazaar Convenor I was at the church all day from Wednesday until Saturday (approximately 35 hours) answering Paul's and volunteers' questions and preparing for Saturday, bazaar day.

Thursday was a busy, full day with Paul giving assistance, at everyone's "beck and call" whenever and wherever needed. Donation sorting speeded up getting to the "more or less" right room. The kitchen was occupied in the morning with creative ladies making centrepieces and other women making sandwich fillings in the afternoon. Paul placed the bazaar signs outside early each morning of bazaar week. Many volunteers were in to get their required number of tables and chairs and to begin setting up their arrangements. Every couple of hours I would peek my head in The General Store and I would see chaos turning into order. It always is a marvel to behold!!! It takes approximated 40 men three full days to bring the room to a proud state. This isn't a job for the faint of heart.

Friday was a very busy, very full (8 am to 9 pm) day with very weary and satisfied volunteers heading home for a good and well deserved night's sleep. Donations kept pouring in the Cunningham entrance all day requiring careful sorting and taking to the appropriate area. Oh! If we only had more space.

Friday at promptly 8 am ladies arrived to make sandwiches from 79 loaves of bread filled with egg salad, salmon, 25 pounds of ground ham, 25 pounds of ground turkey and cream cheese. Squares began to arrive for the sandwich and square plates. The tearoom was set up with tables, chairs, tablecloths, china, silverware and centrepieces. The tearoom was beautifully decorated and suitable Christmas music prepared. Kitchen staff and volunteers were preparing for 8 am Saturday. Activity and preparation continued until 9 pm when the Ventures arrived for a sleep over/night security.

Saturday, bazaar day started early at 8 am with security on the Cunningham door #4 allowing only bazaar volunteers and bazaar necessities. Tearoom volunteers began cutting sandwiches and arranging tea plates. Kitchen and tea volunteers began organizing their duties.

Saturday, at 10 am we welcomed 37 very special ladies, who could not come and cope with the crowds, to browse and shop, then come to enjoy tea, a plate of sandwiches and sweets and chat with friends long not seen.

Bazaar Day, November 5, 2011 was chilly but pleasant. People were lined up waiting for the 1 pm bell. People literally poured through the door mounting the stairs five abreast, buying tearoom tickets and hurrying to their favourite area. All areas were busy for the three hours with the tearoom still serving at close to 4 pm. 534 plates were served with \$190 received from purchased food.

Tear down, put back, clean up began at 4 pm with Paul Sorg, his family, Harold Black, Mark, Merina, Devon, and Rigel Shulist, Gretchen Conrad and myself. If my memory serves me rightly, getting the church in order for Sunday morning went more smoothly and faster. As I said before about how I marvel at The General Store – well in 20 minutes it was empty and reasonably tidy. We owe a great debt of gratitude to Paul Sorg and his family for how graciously and efficiently bazaar set up and clean up is done. Nothing is ever too much trouble for Paul, always remaining in good humour to assist with all our requests.

A thank you is due to Brian Hamilton and Steve Shipley who pitched in Wednesday morning. Their assistance really eased the setting up with .

I need to say a very special thank you to my dear Harold for all his support and who wouldn't allow his name to stand as Co-convenor, which in fact he was.

I extend a well deserved thanks to Marcia Gosse, her assistants Rod Hagglund and Barbara Jeffrey for their time with the bazaar finances, a huge undertaking and certainly not over for Marcia. The introduction of "Bazaar Work Crews" for Wednesday and 4 pm Saturday worked well with three volunteers plus Paul Sorg. The elevator was run by Rideau Park volunteers. There was no parking by 1 pm for some distance.

Following is part of the overall bazaar: Jams and Jellies, Deli, Baking, Crafts of all kinds, Gift Baskets, Ladies' Boutique, Tearoom includes Tearoom setup, Tickets, Table Centrepieces, Kitchen, Teamakers, Food supplies, Sandwich filling makers, Set up tearoom plates, General Store, Toy Store, Book Alley, Garden Centre, Special Guests, Silent Auction, Musicians, Elevator, Coat and Parcel Check, Lost and Found, Safety and Security, First Aid, Photographer, Appraiser, ...

We are God's workmanship created in Christ Jesus to do good works which God prepared for us in advance. (Ephesians 2:10) I wish to say a sincere thank you to each and everyone who assisted generously and willingly to make Bazaar 2011 a resounding success. But, then, that's what we at Rideau Park do!! Thanks be to God.

Respectfully submitted,
Jacqueline Newton, Bazaar Convenor

The purpose of the annual Fall Stewardship Campaign is to secure Rideau Park's financial needs for the year ahead and to identify the congregation's time and talent commitments. The campaign's 2012 financial objectives were identified from the 2012 Projected Budget established at last year's Annual Meeting as well as discussions at Stewards and Council.

This year the Fall Stewardship Campaign benefited from the accomplished leadership of Marilyn Law, our Stewardship Campaign Chair. It was during intermission at the NAC I asked Marilyn if she would consider leading the campaign. After a day of reflection she said yes willingly and "thankfully". With that we started to work finalizing the details of the campaign.

In the third week of September Marilyn shared her positive stewardship message built on the campaign theme "Saints Alive! Living Generously".

- We are all saints doing God's work in many ways both at the church and in our personal lives. As a congregation we have an abundance of resources that we are able to utilize in supporting God's work.
- We know there will be inspiring services, wonderful music, lots of delicious food, and many, many opportunities to grow in our faith through prayer and meditation, studying the scriptures, Advent and Lenten Services. There will also be opportunities to serve God both here at the church as well as in the community.
- We are indeed a blessed congregation and have much for which to be thankful. We have a wonderful caring staff; we have volunteers who give generously of their time on so many projects; we have music programming for all ages from three up; and we have a vibrant Sunday School, UCW, youth programmes, and the list goes on. We provide the use of our facilities to many community groups which results in a diversity of people coming through our doors.
- As we begin this new year, I would ask you to reflect on all the benefits that you have received from your participation in the life of Rideau Park – friendships, nurturing, caring, sympathy, love and oh so much more! Think for a moment of all that you have received since you came to Rideau Park and how important that is to you.

Marilyn's clear and well articulated stewardship message was well received. The campaign was a financial and organizational success. The congregation is very thankful for Marilyn's work ethic, leadership, and faith commitment here at Rideau Park

Rideau Park responds positively to a smooth-running Stewardship Campaign. We are grateful for: the trust and thoughtful support of our Ministers, Debi Brown's expertise on the campaign data requirements and the tracking of its progress; Erin O'Neill for keeping us in supplies, recording the Time and Talents and sharing her office, computer, colour printer and photocopier; Chris Inrig and Doreen for making up the stewardship packages; the cake servers who pitched in on short notice; and to Barbara Jeffrey for recording the new pledges in the system.

Stewardship Analysis: For 2012 we received 317 pledges from 546 households for a total of \$576,025 which is 3% more than last year. Of these, 238 (75%) honour their pledges through preauthorized remittances (PAR) via their banking institutions. We receive \$465,379 (81%) of our pledged contributions by PAR. Each week when the collection plates are passed they are weighted down with \$9,000 of PAR contributions. This strong support for PAR givings ensures our cash flow throughout the year and enables us to keep our monthly Mission and Service contributions to the United Church of Canada current. To say the least, your Counting Teams love PAR!

The Ministries and Programs Fund received 314 pledges for a total of \$452,499, Mission and Service received 108 pledges for \$83,946, and the Property Renewal Fund received 113 pledges for a total of \$39,580. The Ministries and Programs Fund increased by \$36,793 (8.9%). The introduction of pledging to the "Area of Greatest Need" has created a one time, likely permanent bump-up for the Ministries and

Programs Fund which has been identified in need of priority funding for this and future years. Mission and Service pledges are lower this year by \$13,430 (13.8%) and Property Renewal decreased by \$10,921 (21.6%). These changes have helped to bolster the identified (small yearly deficits, using the earnings from the Britt money and drawing down small amounts of capital from the {Hancock} Reserve Fund) underfunding in the Ministries and Programs Fund. There were 59 (35%) fewer M&S pledges and 49 (30%) fewer Property Renewal pledges.

This year the changing pledging pattern introduced by the “Area of Greatest Need” has addressed much of the church’s additional revenue requirements. Each year actual givings exceed the amounts pledged by a percentage. This is anticipated in the budget planning for the New Year. Anticipated budget revenues needed for 2012 are 18.3% more than pledged. This gap has narrowed in comparison to past years and it is felt that with ongoing wise stewardship and good faith we can successfully achieve the combined 2012 budget requirements of \$636,000.

The Memorial Fund began 2011 with a balance of \$2,458. Donations received were \$471. In 2011, \$1,144 was disbursed to purchase special copies of More Voices, butane candles and make repairs to the advent wreath and the original small church podium. The year-end balance is \$1,785.

Rideau Park is a blessed community of faith that enriches our spiritual growth. Our continuing presence and support for Rideau Park is testimony to God’s grace at work within each and every one of us. We give thanks for all that God has given us and all that we can give in return

Respectfully submitted,
Brian Hamilton, Chair

Rideau Park is a thriving Christian community with wonderful staff leadership in all areas. Our ministers guide our spiritual development through their sermons and Sunday services, Lenten Wednesday evening study sessions, Wednesday morning Bible Study and book studies, to name a few examples.

Our music program provides spiritual nourishment in another format. The Mozart Requiem, the Pentecost service, the Dianne Ferguson Concert and the Ornaments of Christmas chancel choir concert were all special events in our church life. Richard is always thinking of music for services and concerts appropriate to the particular church season. Through his leadership the music program also involves people of all ages and engages many volunteers in leading the children's and youth choirs.

The first major staff event this year was Elizabeth's sabbatical during the summer. Elizabeth spent time in Iona, Scotland, a spiritual Christian centre, as well as on a self-managed study program. She returned in the fall refreshed and with some new insights which she shared with us through her fall book study, using Jean Vanier's book "Becoming Human".

During Elizabeth's sabbatical Steve and Georgina shared the responsibilities of her position. Their undertaking is greatly appreciated since it provided significant savings in terms of replacement costs. Georgina increased her hours of work in those weeks when the extra duties required more of her time. Over the coming months she is taking time off in lieu of the extra hours worked.

So much work at Rideau Park is done by our Administrator, our Administrative Assistant and our Caretaker. Debi, Erin and Paul work so hard to keep Rideau Park running smoothly, always with our best interests in mind. In such a busy church we need strong people in these roles and we are blessed with Paul, Erin and Debi looking after us all year long. In December the second major staff change occurred when Erin moved on to a new job. We miss her but we wish her well in her new career and we thank her for all her help.

In November, Dianne Ferguson graciously accepted our call for help when Richard became ill. Dianne capably picked up the seasonal music Richard had planned, and saw us through the Christmas season. Thank you Dianne.

We hope all our employees realize how much we appreciate them, even though we don't always remember to say thanks or give them encouragement for all the challenges they face.

The Ministry and Personnel Committee consists of a representative for each staff person. The members are Alyce Dunnewold, Bas Groeneweg, Jim Holton, Marjorie Melick, Mike Presley and Hyacinthe Wade. Thanks to each of them for their participation and dedication over the year.

Respectfully submitted,
Doreen Hamilton, Chair

In 2011, the Administrative Committee was involved in working with the Communications Team to enhance communication at Rideau Park, both within the congregation and externally. We also worked on issues relating to RPUC's website and its maintenance and design, as well as contributing to a review of the website guidelines.

As usual, we enjoyed working with the Administrator and Administrative Assistant, both of whom were helpful, practical and cordial when called upon. On behalf of the committee, I extend our best wishes to Erin O'Neill, our Administrative Assistant, who has now departed RPUC.

Respectfully submitted,
Nancy McPherson, Chair

The Nominating Sub-committee is presently a Sub-committee of the Volunteer Resources Committee. The objective of the Sub-committee is to ensure that all vacancies on Council, Session, the Committee of Stewards, Trustees, and Presbytery Representatives are filled each year. In addition, the Sub-committee is responsible for recommending appointments for the position of Chair for each of the Sub-committees of Session and the Committee of Stewards.

The Nominating Sub-committee consulted both the Ministerial staff and the Council Chair concerning the church's needs for 2012. As of December 10, 2011, the Sub-committee has been able to fill all the vacant positions except for the Chair of Volunteer Resources.

Summary of Nominations

Vacancies on Council for 2012 include Chair of Stewards, Steward Representative, Chair of Stewardship, Ottawa Presbytery Representative, Chair of Administrative Committee, and Member at Large. Other vacant positions for 2012 are Co-chair of Worship and Music, and Chair of Nominating Sub-committee. Candidates have been identified for these positions and they are indicated on the full list below.

This year, twenty-two Elders were due to finish serving their terms as members of Session. Nineteen agreed to extend their terms. Their names can be found in the attached table under the title **Members of Session**. Three Elders have decided not to renew their terms. Session currently has 56 members for 2012 including two Elders who would be assuming phone list duties only. Many Rideau Parkers continue to embrace new technologies and have chosen to be contacted via email for informational purposes. This has resulted in smaller district lists in many cases.

The Committee of Stewards needed a new member as well as a Chair. The attached table includes the **Members of the Committee of Stewards**.

Recommendations:

As indicated in the attached table, the Congregation's approval is requested for:

1. the appointments to Council;
2. the extension of terms of office for Elders and Stewards;
3. the slate of new Elders and Stewards; and
4. the appointment of new Chairs of Committees as well as an extension of terms for some Chairs of Committees.

The Sub-committee would like to take this opportunity to thank all those who are finishing their terms this year for their tireless dedication and service to the church. The Sub-committee would also like to sincerely thank all those who have agreed to contribute their time and talents to the life and work of Rideau Park United Church.

I would like to express my sincere thanks to all the members of the Nominating Sub-committee: Wayne Bond, Mary Lynne Holton, Marilyn Law, Jacqueline Newton, Drew Presley, Steve Shipley, and Ministers, Steve Clifton and Elizabeth Bryce for their support and dedication to achieving our objectives. This is my last term as Chair of Nominations and I would like to take this opportunity personally to thank not only my Committee but also the administrative staff at the Church, Erin and Debi, for all their help and support.

Respectfully submitted,
Shanti Inman, Chair

The following pages list the appointments (both proposed and existing) to Council, Session, the Committee of Stewards, Trustees, Presbytery Representatives and the Chairs of all Committees with the terms of office that they have agreed to serve. For clarification, the year in parentheses after each name indicates that the person will serve in the position until February of that year (that is, until the congregational meeting in February).

An asterisk (*) indicates new appointments to the positions indicated. A double asterisk (**) indicates extension of term.

COUNCIL MEMBERSHIP

- The Chair and Vice-chair are elected for two-year terms.
- All other Council members are elected for three-year terms, except as indicated.
- The Ministers and Church Administrator are ex-officio, non voting members.

COUNCIL CHAIR	Wayne Bond	(2013)
COUNCIL VICE CHAIR	Mary Lynne Holton	(2013)
COUNCIL SECRETARY	Lisa Sadler	(2014)
CHAIR OF SESSION	Doug Robinson	(2013)
SESSION REPRESENTATIVES	Cameron Jeffrey**	(2013)
	Karen Humphries	(2013)
CHAIR OF STEWARDS	Gaveen Cadotte*	(2015)
STEWARDS REPRESENTATIVES	Bob Roden**	(2013)
	Tony Bernard**	(2013)
CHAIR OF STEWARDSHIP	Brian Hamilton**	(2013)
CHAIR OF MINISTRY AND PERSONNEL COMMITTEE	Doreen Hamilton	(2013)
OTTAWA PRESBYTERY REPRESENTATIVE	Karen Lamb**	(2013)
CHAIR OF BOARD OF TRUSTEES	Gavin Currie	(2013)
PRESIDENT OF UNITED CHURCH WOMEN	Beverly Lee*	(2014)
CHAIR OF ADMINISTRATIVE COMMITTEE	Nancy McPherson**	(2013)
MEMBERS AT LARGE	Drew Presley*	(2015)
	Greig Scott	(2013)

Members retiring: Jeff Allo (Chair of Stewards), Sandra Weedmark (Council Member at Large), Barbara Robinson (Chair of UCW)

STANDING COMMITTEES

SESSION: CHAIR	Doug Robinson	(2013)
CLERK OF SESSION	Brian Neal	(2014)
ELDERS	See <i>Members of Session</i> section	
STEWARDS: CHAIR	Gaveen Cadotte*	(2015)
TREASURER	Bob Roden**	(2013)
STEWARDS	See <i>Members of Stewards</i> section	

CHAIRS OF COMMITTEES

MINISTRY AND PERSONNEL	Doreen Hamilton	(2013)
ADMINISTRATIVE	Nancy McPherson**	(2013)
STEWARDSHIP	Brian Hamilton**	(2013)
SOCIAL ACTION AND OUTREACH	Sandra Weedmark**	(2013)
WORSHIP AND MUSIC	(Co-chairs) Kate Whitridge*	(2015)
	Shailja Verma	(2013)
PASTORAL CARE	Alyce Dunnewold	(2013)
NOMINATIONS	Judy Paré*	(2015)
CHRISTIAN DEVELOPMENT	Elizabeth Acquaah	(2014)
<i>Chairs retiring:</i> Shanti Inman (Nominating); Patricia Whitridge (Worship and Music Co-chair)		

TRUSTEES

CHAIR	Gavin Currie		
SECRETARY	Daryl Lindberg		
MEMBERS	Ed Boothe	Norm Edwards	Bob Elliott
	Murray Ferguson	Bas Groeneweg	Keith Harris
	Les MacLauchlan	Jacqueline Newton	

PRESBYTERY REPRESENTATIVES

Chris Inrig	Brian Irvine
Karen Lamb	Don Melick

MEMBERS OF THE COMMITTEE OF STEWARDS

Tony Bernard**	(2013)	John Blackmore*	(2015)
Gaveen Cadotte**	(2015)	John Durkee**	(2013)
Donald Ford**	(2012)	Rod Hagglund**	(2014)
Brian Hamilton**	(2013)	Mark Inman*	(2015)
Andrew Jeffrey**	(2013)	Bill Ott**	(2014)
Bob Roden**	(2013)	John Scollick**	(2013)
Nadia Senyk**	(2013)	Steve Shipley	(2014)

Stewards retiring: Jeff Allo, Wayne Bennett

MEMBERS OF SESSION

Melanie Achtenberg	(2014)	Elizabeth Acquaah	(2013)
Malcolm Bayne**	(2013)	Graeme Beattie	(2013)
Lynda Becker**	(2013)	Nancy Begg-Durkee**	(2014)
Myrna Belo	(2013)	Heather Bennett	(2013)
Sharon Bernard	(2013)	Wayne Bond	(2014)
Janet Buske-Wichser**	(2013)	Gavin Currie	(2013)
Helen Cutts	(2014)	Dieudonné Detchou**	(2015)
Janet Dundas**	(2015)	Bas Groeneweg**	(2014)
Doreen Hamilton**	(2013)	Janette Hamilton-Silcoff**	(2014)
Don Harper**	(2014)	Lois Harper	(2013)
Christy Harris	(2014)	Margaret Hart	(2013)
Jim Holton**	(2015)	Karen Humphries**	(2013)
Heather Ingrams**	(2013)	Shanti Inman**	(2013)
Chris Inrig**	(2013)	Joyce Ireland**	(2013)
Cameron Jeffrey	(2013)	Karen Lamb**	(2013)
Marilyn Law**	(2015)	Joyce Ireland**	(2013)

MEMBERS OF SESSION (continued)

Ron Little	(2013)	Anne MacMillan	(2014)
Kathy Mayes**	(2013)	Nancy McPherson**	(2013)
Don Melick**	(2014)	Brian Neal	(2014)
Jacqueline Newton**	(2014)	Judy Paré*	(2015)
Drew Presley**	(2014)	Doug Robertson**	(2014)
Elaine Robertson**	(2014)	Barbara Robinson*	(2015)
Doug Robinson**	(2013)	Gary Seymour**	(2015)
Steve Shipley**	(2014)	Muriel Spratt	(2014)
Maureen Stark	(2014)	Bill Totten	(2014)
Dorothy Valliant**	(2013)	Susan Vaughan**	(2014)
Hyacinthe Wade-Howard**	(2015)	Sandra Weedmark**	(2015)
Jessie Weldon-Gibb**	(2015)	Kate Whitridge	(2013)
Chris/Joanne Winckel	(2014)		

Elders retiring: Mary Lynne Holton, Susan Klimowicz, Christel Kurz, Ken Sturley

2011 found the Worship and Music Committee hard at work setting formal agendas and producing records of minutes which facilitated smooth discussions and planning for the year. A total of 7 open meetings were held where all interested members and parishioners were invited to attend.

The committee undertook a feasibility study to permit the renting of the Sanctuary to both outside and inside organizations of Rideau Park this year. The committee decided that, in light of receiving a number of requests for renting the facility, that they would permit it with the proviso that Rideau Park Music programs had first call on the facilities. As such, a Sanctuary Rental Calendar was established for 2011 and 2012 and will be maintained by the church office.

The year continued to be quite busy as we shared our space with Emmanuel United until the fall of 2011. Rev. Elizabeth Bryce was on sabbatical during the summer but with the assistance of Georgina, Steve, Peter Loughheed (Emmanuel UC) and Sharon Sanderson we were able to provide ministerial services throughout the summer. As such the summer services and ushering were shared by the two churches with one exception when each church had its own Camp Awesome. In October, Rideau Park went back to its 11:15 service, and in recognition of and appreciation for the patience of the 11:15 members a Welcome Back luncheon was held which was well attended.

The Music programs continued to excel and grow under the dedicated direction of Richard Glasser, Marcia Gosse and Andrea Laliberté. Once again, the congregation and community were treated to a number of high quality concerts starting with the Chancel Choir's Mozart Requiem Concert in February; the "Bells in Spring" Concert; then Christmas Bell Concert in November; the Dianne Ferguson Honourary Concert and the Chancel Choir's Christmas Concert. And let us not forget the Children's Christmas Pageant that Andrea Laliberté wrote and directed again this year with the help of family and friends. All these events were very well attended. The Canterbury High School String Quartet provided musical assistance for our Easter Services. The committee also provided some financial assistance in order that two bell ringers could attend the "Solo Ensemble Techniques" Conference in Colorado in July.

On January 2, 2011, Rideau Park hosted the first "cluster" church service. This service had five United Churches (Emmanuel, Hawthorne, Riverside, Rideau Park and South Minister) providing joint leadership for the Sunday Service. The feedback from those who attended was very positive and the service was enjoyed by all those who attended. It was decided to repeat this worship experience in 2012. Rideau Park continued to offer mid-week services during Lent, the summer (Vesper Services) and Advent and the success of EnCarna in 2010 was continued in 2011. It should also be mentioned that Rideau Park hosted approximately 100 youth from the London Ontario region for the Worshiplode Weekend that was held in Ottawa in February.

This past year saw the Worship and Music Committee, in consultation with Stewards, working to provide projection facilities in the Sanctuary, Chapel and Chancel loft. In December the first projector was installed in the Sanctuary and was used during a Christmas Eve Service. It is anticipated that other projectors/TV screens will be installed in 2012 and the whole process will be refined and enhanced for the enjoyment of all.

In addition to dealing with the regular issues the Worship and Music committee decide in the fall to introduce another aspect to the structure of the meeting – a book discussion. To this end the book chosen was N. Graham Standish's book – In God's Presence - Encountering, Experiencing and Embracing the Holy in Worship. Prior to each meeting the committee has been tasked to read a

chapter and the first 15-20 minutes of the meeting is devoted to discussing the chapter and its impact. This has added another dimension that provided a valuable fellowship.

It has been a good but busy year and we would like to thank all those who have participated in its success. A special thanks to the coffee organizers, ushers, decorators, our music leaders and ministers as well as the staff of Rideau Park, and from Patricia and myself, a big thank you to Steve Shipley, our recording secretary, who has been invaluable in keeping us on track.

Respectfully submitted,
Shailja Verma and Patricia Whitridge, Co-chairs

At the beginning of 2011, there were two ringing choirs for young people at Rideau Park United Church. Note-Able Sound Chimes ensemble had 17 members in grades 2-6, and met from 6:30 – 7:00 p.m. each Thursday in Brackenridge Hall. The group was directed by Andrea Laliberté with assistance from Erin Brunet, Merina Shulist and members of our teen bell choir. Grace Notes Teen Bells had 17 members from grades 7-12 and met from 7:00 – 7:45 p.m. each Thursday in Brackenridge Hall. This group was also directed by Andrea Laliberté with the capable aid of both Erin Brunet and Merina Shulist. In the Spring of 2011, both Note-Able Sound and Grace Notes shared their music in worship at Rideau Park on several occasions and participated in the annual spring Bell concert.

Over the summer, changes were made to the scheduling of all children's music programming for the fall of 2011 to allow both ringing choirs access to the Sanctuary (greatly reducing the set-up and clean-up time and wear-and-tear on the bells). As a result, Note-Able Sound now meets from 6:30 – 6:50 pm each Thursday in the Sanctuary. Grace Notes Teen Bells now meets from 6:50 – 7:30 pm each Thursday in the Sanctuary. Both groups are directed by Andrea Laliberté with assistance from Erin Brunet, Merina Shulist and Pat Whitridge.

In the fall of 2011, both groups enjoyed a large enrolment. Note-Able Sound had 22 members in grades 2-6, many of whom joined the group as new ringers. Many members of Grace Notes serve as mentor ringers for our youngest chimers and we are grateful for their support. Note-Able Sound shared their music as part of the Christmas Bell concert and at the 6:30 p.m. Christmas Eve family service. Grace Notes started the fall of 2011 with 17 members, all grades 7-12. Grace Notes shared their music at the Christmas Bell Concert, the annual Christmas Pageant and at the 6:30 pm Christmas Eve family service.

Both groups were scheduled to perform a special concert and sing-a-long in December for the residents of Oak Park. This outing had to be postponed due to an outbreak of influenza at Oak Park. We are hoping to share our music with the residents in January of 2012 instead.

For more information, or to register for one of our ringing groups for children and teens, please contact Andrea Laliberté at 613 248-1283 or marcandrea@rogers.com.

Respectfully submitted,
Andrea Laliberté

It has been a busy year for of the Rideau Park Handbell groups, and the challenge of learning new music for the various seasons has been a joy.

A Touch of Brass is one of two adult handbell groups with 11 dedicated members and several volunteer substitutes, all of whom play for the glory of God at Rideau Park United on a regular basis as well as sharing their talents at the U.C.W. Christmas meeting, Gloucester Presbyterian Church, televised on CTV Morning Live, the Rehabilitation Centre, the Ornaments of Christmas concert with Rideau Park's Chancel Choir, etc.

La Bell Ensemble is the second adult handbell group with 9 dedicated members who love to take the bells and share their talents at Rideau Park United as well as in the wider community (i.e., St. Stephens Presbyterian, St. Timothy's Presbyterian (which was televised by Rogers), First Presbyterian in Brockville, etc.). Their talents have also been shared at an Inter-Faith Service at the Synagogue, a wedding, Hunt Club Manor, the Westwood and Bridlewood Trails Retirement Homes, the Delta Hotel, etc.

Ringin' Praise is the beginner adult handbell group with 8 ringers who are enthusiastic and love to ring in practices. Their goal is to learn and apply the theory of bell ringing, while enjoying the sound of music, and if a practice falls on a holiday, they are still out in force to practice!

Rideau Park's Bell Duet was also televised on Regional Contact. So Rideau Park's name was foremost in the community on TV this year.

All of the groups were active participants in the "Bells In Spring" Concert – a massed concert which incorporated four other handbell choirs from neighbouring churches in the community.

This year we started the Christmas season with our annual "Ringin' In Christmas" Bell Concert in December for Rideau Park Bells and Chimes choirs. In the spirit of the season, the freewill offering was split between the Heron Road Food Bank and Rideau Park's Christmas Cheer program.

Thank you to all the dedicated ringers – new and long-standing ringers alike! They are a fantastic group of people who love bells and music.

If you are interested in joining any of these talented groups and becoming a handbell ringer, please call Marcia Gosse at 613-731-2281.

Respectfully submitted,
Marcia Gosse

The mandate of the Christian Development Committee is to take the lead in planning and developing programs and events to promote Christian development for people of all ages in the congregation.

Committee membership includes: Elizabeth Acquaah, Rev. Steve Clifton, Dieudonné Detchou, Janet DiFrancesco, Bas Groeneweg, Andrea Laliberté, Drew Presley, and Anne Marie Tessier.

The following is a list of both ongoing programs, as well as annual events that the committee oversees:

Programs

Sunday School
Sunday Evening Bible Study
Adult Bible Study Groups
Lenten Book Study
Adult Retreats
Confirmation Classes
Vacation Bible School
Hear Say Supper Group
Scouting Programs
Shoe Boxes for Harmony House Campaign
Sunday School Children's Cards for Charity
Events
Congregational Picnic

Events

Congregational Picnic
Carleton University Pause Table
Advent Happening
Pageant Reception

The CD Committee is a very busy committee that is responsible for a number of programs and events. Fortunately, many of these programs "seem" to run themselves because of the contributions of our wonderful volunteers and of course the great work of our staff person, Steve Clifton. With the help of the volunteers, we continue to provide a vibrant Sunday school program. We are privileged to have approximately 20 teachers and helpers, and an average of 55 students in our Sunday school. Rideau Park is blessed to have many talented people contribute to our Sunday school program, and it continues to be an attractive feature of our church.

Youth and young adults from Rideau Park participated in the Ottawa Presbytery event in Ottawa, as well as in Rendez-Vous 2011 in Toronto.

The Carol Gardner Awards, which was started five years ago, is a means of honouring outstanding contributions to our Sunday school. Last year's recipient was Lynn Sherwood, who was recognized for her long teaching service to the Sunday school.

We would like to especially thank Paul Sorg, who continues to have Sunday school rooms ready on Sunday mornings, and also accommodates all the changes that we request.

It has now been four years that our Vacation Bible School program (VBS) has been offered as a full day program and has been led by the youth of Ottawa Presbytery. Youth volunteers from Rideau Park also contributed to the program. The option of a full day camp continued to appeal to many working families, as more children attended Vacation Bible School this year. This year, approximately 60 children attended Vacation Bible School compared to 40 who attended last year. The program continues to be successful.

The 28th Ottawa Scouts, through Gary Seymour, indicated the Scouts' desire to be active participants on the CD Committee.

We were fortunate to have “event shepherds” who helped make our Advent programs possible: Tara Lynne Lockhart for Advent Happening; Mark Shulist and Gretchen Conrad for the Harmony House Shoebox program; Tamara Boisvert for the Christmas Pageant reception; and Andrea Laliberté for directing the Christmas Pageant. Andrea also organized teen knitting classes and produced 20 prayer shawls that were distributed to individuals who were grieving, or were going through difficult or challenging times.

We also want to highlight the wonderful contributions of Janine Ewing Dolbec, who was in her seventh year of running the Children's Cards for Charity Project, and Francine Auger for stepping forward to become the Event Shepherd for the Welcome Back Brunch. This year the brunch was organized in collaboration with the Congregational Development team that hosted an Open House.

We would like to thank Drew Presley for five years of invaluable service to the CD Committee, as Chair and as an eager volunteer who stepped in to help whenever the need arose. Drew leaves the CD Committee to join Council, where he will continue to contribute his time and talents to Rideau Park. We would also like to thank Ruth Cooper for her many years of dedicated service to the CD Committee, especially as Secretary, as well as Event Shepherd for Advent Happening.

The Committee still faces the challenge of keeping bulletin boards up to date, and would welcome someone coming forward to lead that initiative.

The CD Committee comprises dedicated members who generously give of their time and talent. My first year as Chair of CD Committee was an opportunity to learn more about Rideau Park, and it was a beneficial experience for me. I want to thank all the Committee members for their hard work this past year, and I invite more of you to join us.

Respectfully submitted,
Elizabeth Acquaah, Chair

High School age youth meet every Sunday night in the Church Parlour for Youth Bible Study (YBS). This fall YBS began a study of the Book of Revelation, which is a challenging study at any age. Steve Clifton leads this group. We eat .We share. We study. We have fun.

In the Parlour on Sunday mornings, grade 9's meet for a yearlong survey of the Bible, from Genesis to Revelation. Amy Neal is the group leader. Thanks to Amy for her faithful leadership of this very valuable class.

Amy also pulled together a young adult group this fall, which meets at the church every other Sunday night. This group is for those of university age. They meet for discussion and fellowship.

A new initiative last year, born of an idea from Andrea Laliberté, is the youth knitting group. Andrea and Anne Blades introduced 7 young women to the art of knitting prayer shawls; you now can see a group of teens, male and female, sharing a pew and knitting together on Sunday mornings. And this year a new group of pre-teens have learned to knit too.

Rideau Park sends food and volunteers to the Carleton University Ecumenical Chaplaincy Pause Table in April and December, providing free food and friendly smiles to students during their exams. The Pause table is growing as an outreach. Last year 3,798 hungry, stressed-out students stopped by the Pause table during the ten days of Christmas exams. This year 8,357 students stopped by. The generosity of those who give food or time is really appreciated by the students.

The Chaplaincy sent a thank you note that read as follows: "The students were so thankful. Many had no money left for food, or were too anxious to think about cooking. Having free food available meant that they were going into their exams with "fuel" in their systems. Encouraging words from the volunteers were also highly valued. A proctor told us that she could tell which students had been to the Pause Table because they were the calm ones."

Thanks to the Presbytery Youth and Young Adults (YAYA) Ministries program, there are opportunities for our young people to be involved in Presbytery YAYA events. Young Adults are invited to gather on the last Sunday evening of each month for a meal at an event called the Open Table (www.theopentable.ca) at All Saints church in Sandy Hill; this is a joint Anglican/ Lutheran/ Presbyterian/ United Church venture. Twice each year, youth are invited to gather for the Point , a worship event for teenagers in the Ottawa Presbytery. Some of our youth have helped to lead and plan the Point; more than 100 young people attend the gatherings in the fall. More than 500 attended the service in winter this year.

The February Point is huge because it is part of Worshiplude; youth from all over Quebec and Ontario come to Ottawa for Winterlude, are hosted by local churches and join in with the Point worship gathering. RPUC hosted 85 awesome teens from London Conference last year during Worshiplude weekend.

Our Presbytery also runs the Camp Awesome VBS program and several of our young people are involved in leading the program. Camp Awesome runs 17 camps over 6 weeks in July and August.

This summer, for the first time in decades the UCC held a national gathering for youth, young adults and their leaders; 7 Rideau Parkers went along and we travelled with a group of about 40 from Ottawa. We met at U of T in downtown Toronto for 4 days of inspiration and fun.

We gathered in the morning for worship and song, led by great musicians: rEVOLVE, Rick Gunn and Karla Adolph. We heard incredible speakers: Roger Nishioka, Trey Anthony and Shane Claiborne. We went to afternoon workshops or took part in service projects. In the evening there was opportunity for connection and fun.

More than 600 people attended Rendez-vous 2011 and it was an awesome experience. Thanks to the congregation of Rideau Park who, through the Foundation, helped to fund the registration of 6 Ottawa Presbytery young people. This was money well spent.

Our congregation is blessed with great young people who contribute much to our church's life. Youth make our annual VBS possible with their enthusiastic leadership. A number of our youth and young adults serve as Sunday School teachers through the Sunday School year. Projects like Advent Happening, the Church Picnic, Christmas Cheer and the Christmas Pageant engage our youth in the work of our congregation. They share musical gifts through Jubilation and Note-able Sound.

Our youth bless us with their gifts in many ways. And we are grateful for all those who work with the youth of our congregation.

Respectfully submitted,
Rev. Steve Clifton

This year we celebrated over 50 years of the best in scouting with our partner Rideau Park United Church. The Church caused the 28th to be chartered at least as early as 1961, although the original records are lost. We consider ourselves as part of the Church's Christian Development work.

Scouts mission is to contribute to the physical, mental, social, spiritual and emotional education of young people. We do this through "learning by doing" in a values-based system that rests on:
1. Duty to God; 2. Duty to others; and 3. Duty to self.

Each section has a motto, promise and law. Some are familiar: Do a good turn daily! (Cubs) and Be prepared! (Scouts). To run a group this size is expensive – we run through over \$17,000 a year, all of which comes from parental registration fees and fundraising.

Section Activities

Beavers: We have 20 eager Beaver Scouts (18 boys and 2 girls) and 4 keen leaders this year. In 2011, Beaver Scouts participated in Scout Sunday at Rideau Park United Church, helped clean up the Alta Vista School park, planted trees in the spring, planted a Peace Garden at Rideau Park as a Remembrance Day activity, and spread some holiday cheer by carolling for the residents of St. Patrick's home. They took part in several outdoor activities including Beaverees, skating at Rideau Hall, swimming night, tobogganing, a fall hike at Mer Bleue, all sections Camp at Opemikon, and the Rideau Area All Sections Activity Day.

Cubs: Cub Scouts are both boys and girls aged 8-10. Most of our program is based on fun and creative ways to work on the Cub Scout badges. We enjoy outdoor activities; such as area camps; skill and team building activities. We participate in community service activities such as the Remembrance Day Candlelight Ceremony and we are winding up for our favourite activity, Kub Kars.

Scouts: The troop has 16 youth (2 girls, 14 boys), 7 adult volunteer leaders and one teenaged Scouter in Training. It spent eleven nights camping in winter and warmer weather including a canoe trip in Algonquin Park, a weekend at Camp Opemikon, and a weekend in the Adirondack High Peaks area. Programming included an introduction to fencing, a visit to the police station, participation in Scout Sunday at Rideau Park, a Geocaching competition, The Amazing Race urban night hike, indoor rock climbing, work on the Heritage badge, volunteering at a citywide electronics recycling drive, volunteering for the Ottawa Food Bank annual drive, a visit to the War Museum and volunteering at the National Remembrance Day ceremony at the Cenotaph. Two youth received the Chief Scout Award. Next year will see a larger troop, as up to nine Cub Scouts will be moving up to Scouts.

Venturers: The 28th Ottawa Venturer Company has 11 active members, and 3 Adult advisors. The Venturers have participated in a number of activities in 2011, including a spring backpacking trip in Gatineau Park, a weekend at Camp Opemikon, attending the area RoVent camp, and a November backpacking trip in Gatineau Park. Weekly meetings have included; a Photo Scavenger Hunt, Cooking Nights, Rock Climbing nights, and regular business meetings. The 28th Venturer Company is excited to have 9 members working to complete the bronze level of the Duke of Edinburgh award.

The Pastoral Care Committee continued to coordinate the visiting of those in our church community who are no longer able to attend church events and functions. On behalf of the congregation, it sent condolences to recently bereaved members of the church community. It sponsored, and organized the reception for the annual “Our Hearts Remember” service, a service where we remember loved ones who live on in our hearts. The Pastoral Care Committee also continued to fulfill its role of welcoming and providing information on Rideau Park United Church for newcomers.

This year, the committee decided to hold a Sunday afternoon service with communion, and a tea afterwards, for seniors who are not able to get out to church regularly. Transportation to and from the service would be made available to those needing it. The service will be held in early 2012. If all goes well, these services may be held once or twice a year.

It is my privilege as Chair to serve alongside a group of highly dedicated people who faithfully visit and communicate with members of our church community whose presence in it is no longer a very visible one. Most of these volunteers have been providing this pastoral care service for many, many years. On behalf of the congregation, I thank them for this vital role they perform in keeping our community bonds strong.

Respectfully submitted,
Alyce Dunnewold, Chair

The members of Social Action and Outreach are a dedicated and committed group. The Committee organizes programs/events/space for: tenants in low-income housing; Christmas Hampers; Heron Emergency Food Bank; seniors; children and their care givers; and Alcoholics Anonymous.

Respectfully submitted,
Sandra Weedmark, Chair

Christmas Cheer – Carolyn Scollick

This year, the staff, Elizabeth Bryce, Debi Brown and Erin O'Neil, took on the role of the Christmas Cheer Coordinator and did a wonderful job. At the follow up evaluation meeting, it will be determined whether or not this method will be used in future. And again this year the Rideau Park congregation very generously donated funds and their time. This permitted us to provide 74 hampers and 70 gift cards to families struggling to provide their families with food during the Christmas Season. Our Christmas hamper food and gift cards were purchased again through our neighbourhood Wilson's Independent Grocery Store.

Peace and Development – Marilyn Law

Once again the Peace and Development Committee arranged Black History Sunday in January with Reverend Thérèse Samuel as our guest speaker and Voices of Praise the choir. We also arranged for Minutes of Mission one Sunday a month and brought to the congregation current items of social interest by way of the bulletin. We also had an interesting Sunday afternoon event with a Unitarian speaker.

Heron Emergency Food Centre – Frances Dawson

Demand is up 30% over two years ago. 75 volunteers work very hard to serve the 1,400 plus people who come to HEFC for emergency food aid every month. HEFC is the second largest Food Bank agency in Ottawa. The financial support and food donations from the Rideau Park community continue to be an important factor in HEFC's ability to provide nutritious emergency food supplies.

Blair Court Community House – Frances Dawson

Rideau Park United Church has been and continues to be an important partner for BCCH. With monies from the RP Foundation for Ministries an adult learning program was created in 2011. There are 5 women taking courses with the Independent Learning Centre (administered by BCCH) pursuing studies in accounting, biology, science, French and one working toward her GED. The mother tongue of the students enrolled in the ESL class includes Somali, Russian, Mandarin, Arabic and French.

Thursday Euchre Club – Steve Shipley

The unofficial mandate of this club is, in order: to laugh; to talk and then play cards and we are very good at all three. Approximately 20 plus people arrive each week to play rousing games of Euchre which is followed by a good hot cup of tea and cookies. Oh yes, and once a month we do have birthday cake as well as two parties at Christmas and in June. The door is always open for new members and guests. We meet each Thursday afternoon from 1:00 to 3:00 pm from September to June. So please do drop in and bring a friend.

Multi-Faith Housing Initiative (MHI) – Don Melick

This multi faith Ottawa based charitable organization has recently set a three year objective to double (from its current 42 units) the number of individuals and families that it can provide affordable quality housing. In fact a search of likely opportunities is currently under way. Also

notable is that in a time of financial constraint, support is still available from Government sources for well thought out projects. Again In 2011 the Rideau Park Foundation continued its sizable loan support For those who are interested in such an activity there are many opportunities to work as a volunteer. Call Don Melick at 613 523 2545 for information.

Banff Avenue Community House – Bas Groeneweg

This centre is situated in a somewhat obscure corner of the city, opposite Home Depot on an Street just past the Walkley Road intersection. This is one of fourteen similar centres located throughout the city. Sylvie Manser is the very competent and industrious House Director working with a small staff, a number of volunteers, a budget consisting of grants from the city and other institutions and many charities. This is a low-rental and low-income area and programs are all directed toward helping these people – adults and children – find employment, improve education and language skills and to improved their overall situation.

Group for Friends - Bill and Anne McMillan

This is both a fun and a support group for physically or mentally challenged people aged 18 to 40. It meets at Rideau Park for events such as dances and movie/pizza nights.

Sunday Fun – Banff Ave

Under the leadership of Margaret Walsh and Mary Dudgeon this group met in 2011 from January to May. We wish to thank Margaret and Mary for their dedication over the years to the Banff Avenue Sunday Fun program.

Alcoholics Anonymous

The Oasis Group of Alcoholics Anonymous has been sponsoring regular speaker meetings at our church for more than 30 years – year around, including holidays. Friends and families of alcoholics and anyone interested in learning about AA or alcoholism are welcome to attend any of the meetings.

50+fitness

A group of seniors meet every Tuesday and Thursday morning to exercise at eight week intervals.

Harmony Club

This group meets on the last Wednesday of each month from 10:30 am to 2:00 pm (excepting June, July and August), cards and conversation precede a lunch made by volunteers. This is usually followed by a program of music or a guest speaker.

Morning Children's Play Group

Pre-school age children meet with their parents/caregiver for children's activities and socializing. This group meets Monday, Wednesday, Thursday and Friday mornings from 9:30 to 11.

Rideau Park Curling Club

A group of men and women from the congregation meet regularly at the RA Centre to enjoy a game of curling, and new members are always welcome, no experience is necessary.