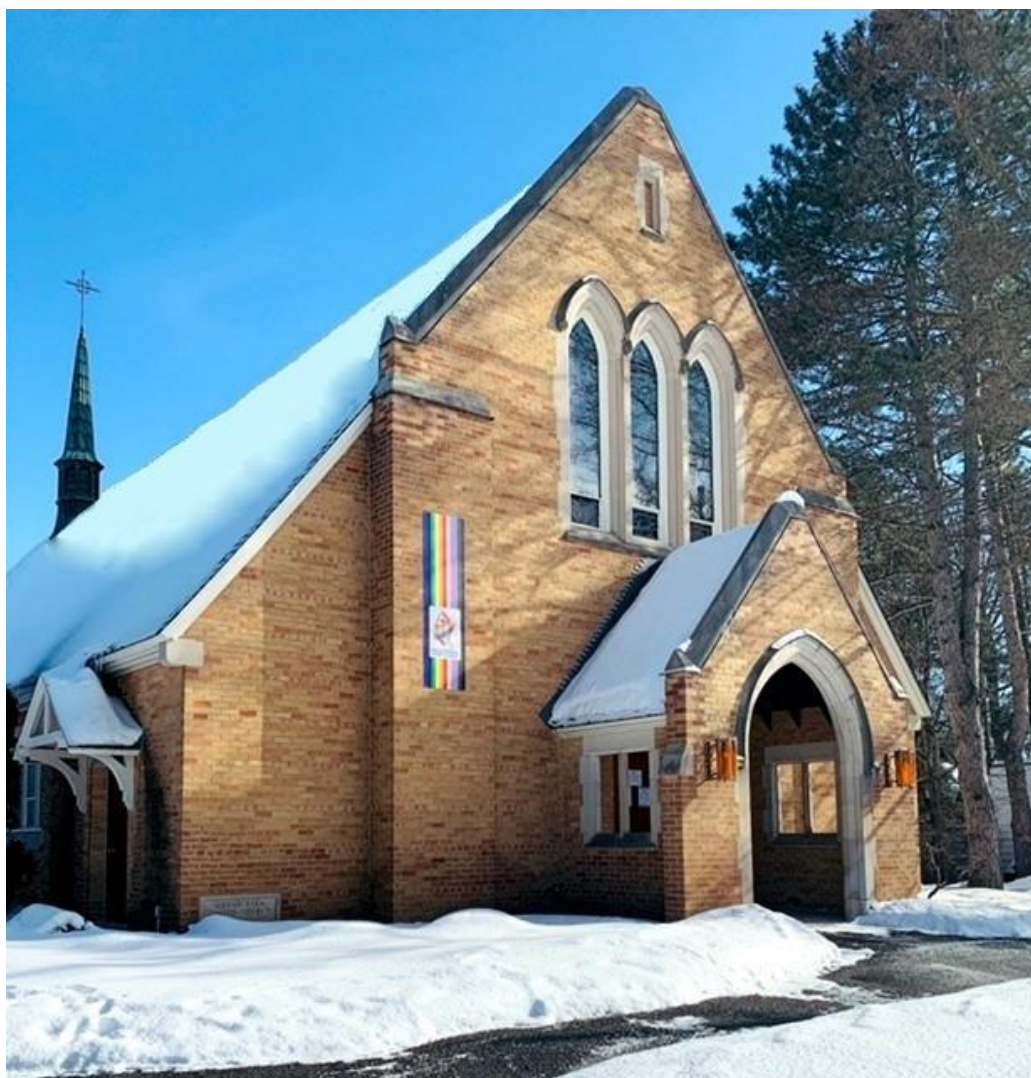


# **Rideau Park United Church Annual Report 2020**



**2203 Alta Vista Drive  
Ottawa, Ontario  
K1H 7L9**

**613-733-3156  
[rideaupark.ca](http://rideaupark.ca)**

**CONTENTS**

LEADERSHIP AT RIDEAU PARK.....	1
JOURNEY OF FAITH.....	2
IN MEMORIAM.....	3
RIDEAU PARK UNITED CHURCH IN MEMORIAM DONATIONS.....	4
CHURCH VISION STATEMENT.....	4
ORGANIZATIONAL CHART .....	5
STATISTICS 2020.....	5
COUNCIL.....	6
STEWARDSHIP .....	7
BOARD OF TRUSTEES .....	8
Trust Funds .....	9
Statement of Operations -- Trustees.....	9
Trustees – Investments as at December 31st, 2020 .....	10
UNITED CHURCH WOMEN .....	11
MINISTRY AND PERSONNEL .....	13
PROGRAMS .....	14
Worship and Music .....	14
Handbells.....	15
Chimes/Teen Bells .....	15
Social Action and Outreach.....	16
Christian Development .....	16
Sunday School Financial Report .....	18
Spirituality .....	19
Environmental Action.....	19
PEOPLE .....	21
Congregational Life .....	21
Affirming Community of Faith.....	21
Nominations.....	22
Pastoral Care .....	23
Congregational Development .....	24

RESOURCES .....	25
Finance .....	25
2020 Statement of Financial Position.....	26
2020 Statement of Operations .....	27
2021 Budget RPMP and M&S Funds .....	29
2020 Apportionment of Rideau Park Ministry and Personnel Costs.....	30
2020 Fund Account Reconciliation .....	31
Property .....	31
Property Renewal .....	32
Property Renewal Fund (PRF).....	32
Year 2: 2020 - 2028 Draft Long Range Property Renewal Plan .....	33
Administrative and Communications.....	33
MINUTES OF ANNUAL CONGREGATIONAL MEETING 2020.....	35

## LEADERSHIP AT RIDEAU PARK

### STAFF

Rev. Steve Clifton	Minister of Christian Family and Worship
Rev. Elizabeth Bryce	Minister of Community and Worship
Rev. Georgina Fitzgerald	Minister of Pastoral Care
Iain Macpherson	Music Ministry Coordinator
Andrew Ager	Organist
Debi Brown	Administrator
Debby Gerro	Administrative Assistant
Geoff Scollick	Custodian

### COUNCIL

Patricia Whitridge	Chair
Ken Tong	Vice-Chair
Lynn Sherwood	Secretary
Bob Roden	Treasurer
Gavin Currie	Chair of Stewardship
Doug Robinson	Eastern Ontario Outaouais Regional Council Representative
Sheila Faure	Chair of Board of Trustees
Nancy Begg-Durkee	President of United Church Women
Carolyn Scollick	Chair of Ministry and Personnel
Gaveen Cadotte	Member at Large
Jeremy Geelen	Member at Large
Sandra Graham (leave of absence)	Member at Large
Heather Ingrams	Member at Large
David Moreira	Member at Large
Laura Presley	Member at Large
Steven Neal	Programs Liaison
Drew Presley	People Liaison
Adam Kurz (leave of absence)	Resources Liaison
Ron MacPherson (Interim)	Resources Liaison
Rev. Steve Clifton	Minister of Christian Family and Worship
Rev. Elizabeth Bryce	Minister of Community and Worship
Debi Brown	Administrator (non-voting)

**COMMITTEES****Programs**

Worship and Music	Karen Lamb and Sharon Sanderson, Co-Chairs
Social Action and Outreach	Sandra Weedmark, Chair (until May 2020)
Christian Development	Tara Lynne Holton and Andrea Laliberté, Co-chairs
Environmental Action	Kristina Inrig, Chair

**People**

Congregational Life	Alyce Dunnewold, Chair
Nominations	Marilyn Law, Chair
Pastoral Care	Brian Neal, Chair
Congregational Development	Greig Scott, Chair

**Resources**

Finance	Bob Roden (Treasurer)
Property	Brian Hamilton, Chair
Administration and Communications	Nancy McPherson, Chair

Eastern Ontario Outaouais	Alyce Dunnewold
Regional Council Representatives	Brian Irvine
	Doug Robinson
Envelope Secretary	Barbara Jeffrey

**JOURNEY OF FAITH****Baptisms**

Child	Nathan Robinson
	Julia Robinson
	Gavin Neal
	Kobin Neal
	Fletcher Alexander Presutti VanEvery
Adult	Ken Tong

**Transfers to Rideau Park**

Lorraine Busby  
Len Busby

**IN MEMORIAM*****Members, Adherents and Friends of Rideau Park***

Joan Adamson	Randolph (Randy) Bruce Lidstone
Ronald Bedford	Daniel Weldon Lynch
Ross Boyle	Norman Watson Marsh
Alex Caldwell	Katherine McKennirey
Helen Cameron	Gail Murphy
Daphne Veronica Campbell	Mark John Nesdoly
Edna Carnegie	Julien Olson
Nora Christie	Art Redekopp
Evalyn Collins	Fred Runge
Eunice Dawson	Charles Haddon Smith
Gladys Margaret Fitzpatrick	Arthur Thurlow
Helen Gardiner	George Tweedie
Roy Richard (Dick) Geddes	Liz Waldron
Allan Hamilton	Cy Webster
Maudie Hobbs	Jackie Webster
Colleen Holmes	Daniel Welch
Kay (Mary Kathleen) Irvine	Barbara Gwendolyn Yeo
Edward (Ted) Graham Lee	

***I am the resurrection and the life. Those who believe in me, even though they die, will live, and everyone who lives and believes in me will never die.***

*John 11: 25, 26*

**RIDEAU PARK UNITED CHURCH IN MEMORIAM DONATIONS**

Joan Adamson

Edward (Ted) Lee

Ron Bedford

Randy Lidstone

Earl Bryenton

Katherine McKennirey

Evalyn Collins

Marguerite McNally

Helen Gardiner

Harris and Mary Mossman

Allan Hamilton

Marjorie and Colin Ogden

Colleen Holmes

Dora Scott

Kay Irvine

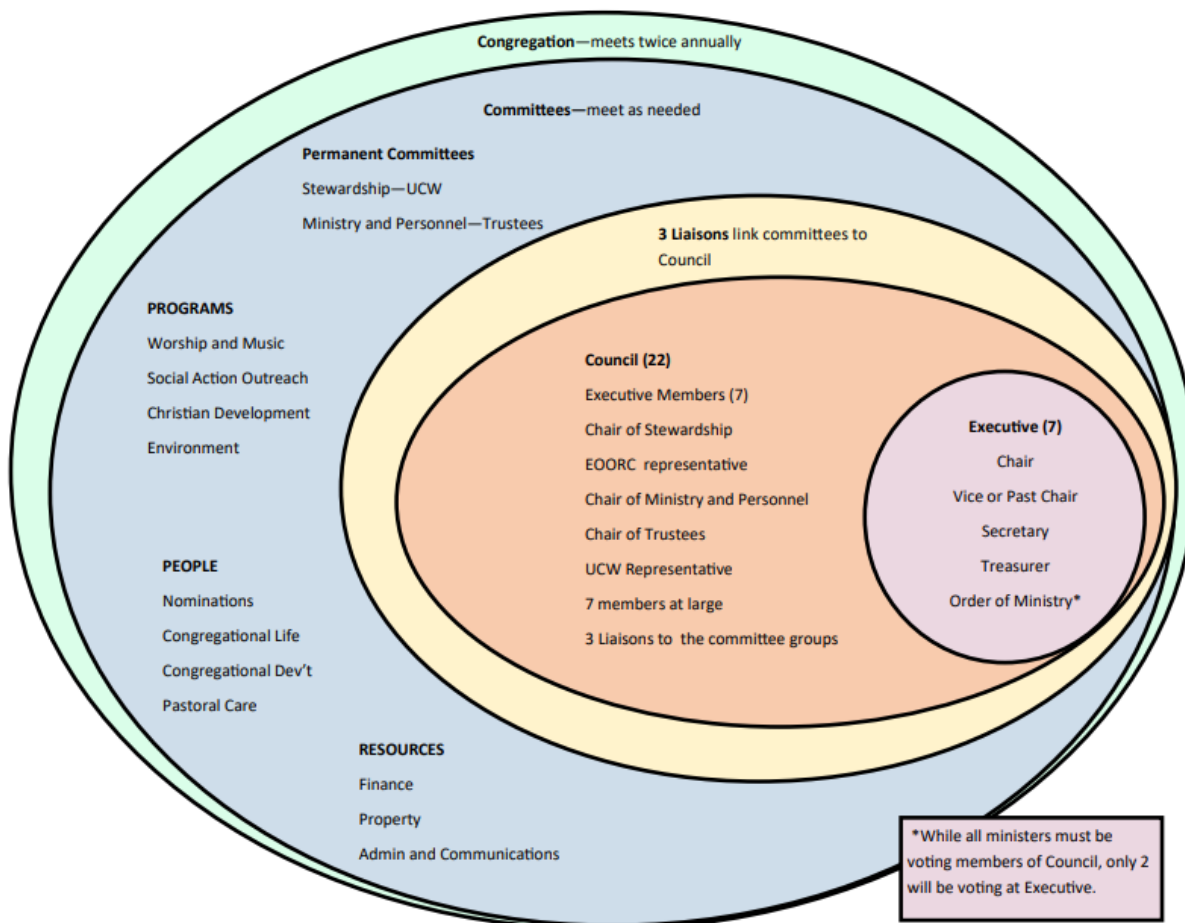
Grandparents of Raylene Charles

**CHURCH VISION STATEMENT**

*Rideau Park United Church is a vibrant faith community that seeks to embody a loving God as revealed in Jesus Christ. We recognize that, in order to reflect God's love and grace, and to faithfully follow in the path of Jesus, we are called to honour all God's children for their unique gifts, and to promote peace, social justice and a healthy environment as we work together to deepen our own spiritual growth.*

*We share in worship, prayer and learning, and we offer care and support to all, including those of diverse ages, abilities, gender identities and sexual orientations, races ethnicities, religions, and economic backgrounds. All are invited to participate fully, with mutual respect, in the life and work of the church.*

## ORGANIZATIONAL CHART



## STATISTICS 2020

Number of households as of December 31, 2020 .....	418
Total number of persons as of December 31, 2020 .....	996
Members received through Transfer of Certificate .....	2
Members removed through Transfer of Certificate .....	0
Persons removed by death .....	28
Number of weddings.....	1
Number of funerals.....	10



## COUNCIL

2020 was certainly a different year, one we never could have imagined. We are still in the midst of a global pandemic and our world has definitely changed, including our church world. Several important projects were disrupted by the pandemic, as the church was closed starting in March 2020. Our staff has continued to work tirelessly, and we are grateful for their efforts and also the efforts and contribution of Rev. Jenni Leslie, Gavan Quinn, organist, and the choir from Kitchissippi United Church.

As part of our new organizational structure that was implemented on February 9, 2020, we created an Executive Committee of Council, comprised of the Chair of Council, Vice-Chair of Council, Treasurer, the Secretary of Council and two ministers. We had envisaged the possible need if decisions had to be made too quickly to allow for a meeting of full Council. Little did we know! The full Council met seven times in 2020 and Council Executive met a further seventeen times, starting in mid-March. The Administrator (non-voting), the Chair of Ministry and Personnel and the President of the UCW also joined the Executive to provide essential inputs.

Council and Council Executive were constantly referring to current advice from Ottawa Public Health, in terms of who could be where in the church building, how many at a time, and what precautions needed to be taken. If you had cause to be in the building after March, you would have noticed stations set up for hand sanitizing, as well as signs to wear masks and to keep physically distant. We have maintained a sign-in log to facilitate contact tracing, should that have been necessary.

Highlights of Council and Council Executive actions and decisions in 2020 include:

- Approving the implementation of the new organizational structure, including Nominations for both newly created and existing positions
- Developing materials for consultations to support the Strategic Planning exercise and the Community of Faith Profile – deciding in April to suspend activities on these projects until after Covid
- Approving changes to existing staff and positions as recommended by the Ministry and Personnel Committee
- Closing the church to in-person worship starting in March 2020 based on existing advice from Public Health – continuing to live-stream our Sunday worship services with help from Brian and Doreen Hamilton, who have done yeoman service throughout the year
- Cancelling activities in the church building starting in March 2020
- Welcoming Kitchissippi United into our midst, as they did not have their own capacity to live-stream or otherwise broadcast their services – Jenni Leslie and Gavan Quinn continue to help lead our services
- Opening the church for limited in-person worship in September and then closing it again to in-person worship in early October.

Our move to become an Affirming congregation provides a safe place to worship for both the congregation and the broader community and we are proud that we were able to put up banners on the outside of the church to highlight our affirming status.

We continue to pay close attention to the budget and actual financial situation on a monthly basis. We received some funding from Canada Emergency Wage Subsidy programs that helped us continue to meet our financial goals.

I thank all members of Council and Council Executive for their help and support in 2020. Our church staff

have also helped, guided, supported and prayed for us, as we have moved through this difficult year.

Council and Council Executive cannot achieve our goals alone – we count on support from the congregation every day and in every way. Many church activities were cancelled, but others continued in different ways, using social media or Zoom meetings. Thank you to everyone who put in extra effort to find a way to continue Sunday School, Camp Awesome, UCW, Senior Choir etc. Financial support this year has also been tremendous!

Respectfully submitted,

Patricia Whitridge, Chair

## STEWARDSHIP

The Stewardship Committee is responsible for ensuring a consistent level of faithful stewardship at Rideau Park, so that the resource potential of the congregation may be realized for our ongoing ministry. A major part of our work to achieve this is our annual Stewardship Campaign in the fall.

This year Greig Scott took up the challenge of acting as Chair of the 2021 Campaign and we thank him for providing excellent leadership with a strong statement of the importance of this church to his family. Thanks also to Brian Hamilton and Debi Brown for undertaking the task of preparing the material, sending it out and collating the results.

This campaign seeks financial pledges, and this year we expanded the campaign to also seek pledges of Time and Talents. The financial results are summarized below. With regard to pledges of Time and Talents we received 52 responses. Members of the committee contacted everyone who responded and were able to match many of the offers of Time and Talents with the needs of various groups in the congregation. We intend to continue with this process in the weeks ahead. Thanks to Lisa Sadler and Karen Humphries for leading this process.

For 2021 there were 206 pledges from 356 households for \$481,710 which is \$548 or .1% less than last year.

Program	2020 Pledges	2021 Pledges	+/- 2020 Pledges	+/- % 2020
<b>Ministries and Programs Fund</b>	184,599	164,511	-20,088	-10.9%
<b>Mission and Service Fund</b>	45,858	43,160	-2,698	-5.9%
<b>Property Renewal Fund</b>	43,801	35,393	-8,408	-19.2%
<b>Area of greatest need</b>	208,000	238,646	30,646	14.7%
<b>Total Pledges</b>	484,278	481,710	-548	-0.1%

Note: In addition, a \$6,600 pledge for the Refugee Fund was received during the campaign.

Combining the Ministries and Programs Fund and Area of greatest need yields \$403,157 for Ministries and Programs in 2021 which is \$10,558 (2.7%) more than 2020.

Of these 185 (90%) honour their pledges through preauthorized remittances (PAR) via their banking institutions. We receive \$421,056 of our pledged contributions by PAR. Each week when we pass the collection plates we receive \$8,097 by PAR contributions. These contributions have ensured our cash flow throughout this difficult and challenging pandemic period. The regularity of our contributions allows us to meet our obligations and keep our monthly mission and service contributions to the United Church of Canada current.

The Stewardship Committee was reactivated again this year as a separate committee, and I would like to

thank the members of the committee – Brian Hamilton, Karen Humphries, Michael Presley, Lisa Sadler and Merina Shulist – and our ministers, Elizabeth Bryce, Steve Clifton, and Georgina Fitzgerald for their support during this unusual year.

Respectfully submitted,

Gavin Currie, Chair

## BOARD OF TRUSTEES

The Trustees hold title to the deed of the church property on behalf of the congregation and are responsible for ensuring such property is adequately maintained and used in accordance with the objectives of the United Church of Canada. In addition, the Board administers a number of funds established at Rideau Park under the direction of the Rideau Park Council and/or its committees.

Revenues of these funds derived from donations and the subsequent investment earnings are as follows:

The Douglas Brown Memorial Fund is used to support social activities for the physically and mentally challenged.

The Rideau Park Foundation Fund has been established to serve as a permanent source of supplementary funding for special needs at the church. This was the tenth year that money from this fund has been eligible for disbursement. Half the donations to the fund in 2020, combined with investment earnings, make \$10,306 eligible for disbursement in 2021. In addition, in 2020 \$3,000 were awarded, but not spent, making a total of \$13,306.

Investment earnings from the Dora Helmkey Legacy Fund, when they are accrued, are turned over to Council for use at its discretion. No funds are available this year.

The Karl Rasmussen Fund is used to assist people undertaking full-time studies directed towards full-time service in the Christian Church. Only income earned in a given year may be used for this purpose. Income becomes part of capital if not used in the current accounting period.

The Reserve Fund was established in 2010. It was established with funds received from the Hancock Estate and a small portion of the annual receipts from the Britt Estate (\$1,753 in 2020). The total investment and cash in this fund under the administration of the Trustees now amounts to \$218,558. The investment earnings from this fund and the principal, if necessary, are available for Council to deploy as circumstances warrant.

Income from the Britt Estate is used as Council deems appropriate. The allocation from the Estate made by Council to the Reserve Fund was \$1,753 (10%).

Norm Edwards and Keith Harris resigned from Trustees this year and we are very grateful to them both for their many years of faithful service to the Board. Members of the Board of Trustees are Catherine Ennis, Sheila Faure (Chair), Diane Keevil Harrold, Ron Little (Treasurer), Michael Presley, Susan Vaughan and Rev. Elizabeth Bryce (ex-officio).

Respectfully submitted,

Ron Little, Treasurer

Sheila Faure, Chair

Rideau Park United Church  
Trust Funds  
2020 Statement of Financial Position  
December 31st 2020

	D. Brown Memorial Fund 2020	Rideau Park Foundation Fund 2020	Rasmussen Fund 2020	D. HelmKay Legacy Fund 2020	Reserve Fund 2020	Total Funds 2020
<b>Assets</b>						
Cash	2,009	52,982	2,432	0	50,798	108,221
Investments	23,653	152,654	28,210	10,000	166,007	380,524
Receivable	337	6,719			1,753	8,809
	25,999	212,355	30,642	10,000	218,558	497,554
<b>Fund Balances</b>						
Balance, beginning of year	25,529	197,190	30,642	10,000	208,174	471,535
Excess of revenues over expenses for the year	470	15,155	0	0	10,384	26,019
Balance, end of year	25,999	212,355	30,642	10,000	218,558	497,554

Statement of Operations -- Trustees  
For the year ended December 31st 2020

	D. Brown Memorial Fund 2020	Rideau Park Foundation Fund 2020	Rasmussen Fund 2020	D. HelmKay Legacy Fund 2020	Reserve Fund 2020	Total Funds 2020
<b>Restricted revenues</b>						
Contributions	0	9,719	0	0	1,753	11,472
Interest	470	3,551	0	0		4,021
Investment income	0	1,895	0	0	8,631	10,526
	470	15,165	0	0	10,384	26,019
<b>Expenses</b>						
Return to beneficiaries	0	0	0	0	0	0
Excess of revenues over expenses for the year	470	15,165	0	0	10,384	26,019

**Rideau Park United Church Trust Funds**  
**Trustees – Investments as at December 31st, 2020**

<b>Trust Funds Investments</b>		
TD GIC @ 2.1%	46,790	
Canoe Financial (Fiera) Fund	119,217	*
<b>Reserve Fund Investments</b>	<b>166,007</b>	
TD GIC @ 0.2%	61,401	
TD GIC @ 0.55	15,083	
Canoe Financial (Fiera) Fund	26,170	*
Multi Faith Housing GIC @ 3.5%	50,000	
<b>Foundation Fund Investments</b>	<b>152,654</b>	
Community Trust GIC @ 2.00%	23,653	
<b>D. Brown Memorial Fund Investments</b>	<b>23,653</b>	
TD GIC @ 2.1%	28,210	
<b>Rasmussen Fund Investments</b>	<b>28,210</b>	
5YR Financial Index GIC, TD Bank	10,000	
<b>D. Helmkey Legacy</b>	<b>10,000</b>	
<b>Total Investments</b>	<b>380,524</b>	

\* Market Value \$145,387 (Book Value \$117,000)

## UNITED CHURCH WOMEN

We invite you to learn more about the Rideau Park United Church Women on the Rideau Park Website. On those pages you will find information about the UCW: its purpose, executive, units and membership as well as UCW activities and contact information. (<https://www.rideaupark.ca/programs/united-church-women/>)

Positions descriptions including responsibilities of the UCW Executive and the Convenors of various activities are now available by contacting the President or Recording Secretary.

### MEMBERSHIP STATISTICS FOR 2020

TOTAL ACTIVE MEMBERSHIP 55

Circle Group 6

E-buddies 16

Life Memberships\* 43

Member at Large 19

Not Active 15

\* New Life Memberships: None due to Covid pandemic

**In Memoriam:** Evelyn Denyes, Maudie Hobbs, Gladys Fitzpatrick, Kay Irvine, Helen Cameron, Liz Waldron, Eunice Dawson, Evalyn Collins.

**2020 Executive:** Nancy Begg-Durkee (President), Heather Ingrams (Past President), Nancy McPherson (Vice President), Judy Paré (Recording Secretary), Elaine Robertson (Treasurer), Lisa Sadler (Finance), Mabel Bannerman/Judy Paré (Flowers), Mabel Bannerman (Missions), Grace Shaver (Correspondence Secretary), Karin Ott/Heather Ingrams (Community Friendship), Peggy Rader (Supply and Welfare) and Literature and Archives (vacant).

The UCW would also like to take this opportunity to express our appreciation to Rev. Elizabeth Bryce, Rev. Steve Clifton and Rev. Georgina Fitzgerald for their support, and thank you to all staff for their assistance in so many ways.

Respectfully submitted,

Judy Paré, Recording Secretary

### Report of the President

2020 was a challenging year for the UCW as it was for everyone everywhere. Despite the challenges 2020 was a successful year for the UCW. We were able to raise funds through donations for events that really didn't happen; the June Potluck dinner and the Bazaar. We also benefited from several individuals who took on specific activities such as selling jams and jellies, making masks, selling frozen berries and making turkey pot pies—thank you! We missed meeting face to face greatly but as we went along we learned to Zoom and communicated with members and others via greeting cards, calls, e-mails and a UCW newsletter. We found that we are able to do much more than we thought we could. In fact, we were able to continue or even increase our donations to local charities and Rideau Park outreach programs. The Rideau Park church community is very generous in all respects to both Rideau Park and the UCW and so this year we are able to direct any additional funds solely to the United Church Mission and Service Fund. It is extremely gratifying to be able to do this and as a UCW Group we are so very thankful to everyone. We look forward to 2021 with hope and faith.

As I end my term as President I would like to thank the UCW Executive and the membership for their amazing support over the last three years. It has been a wonderful experience. Thank you to each of you.

Respectfully submitted,

Nancy Begg-Durkee, President

<i>UCW General Account</i>	<b>2020 Actual</b>	<b>Summary</b>
<b>Opening Balance Jan. 1, 2020</b>		<b>2,500</b>
<b>Amounts held by Units Jan. 1, 2020</b>		<b>50</b>
<b>Receipts:</b>		
Opening Balance 2019 Correction	248	
Envelopes	1,655	
HST Rebate	567	
Miscellaneous	118	
Flowers	365	
Donations - Virtual Dinner	2,250	
Alternative Fall and Bazaar Events	8,770	
Presbyterial Donation	200	
Harmony Club Donation	200	
UCW Projects	2,882	
Unit Projects	622	
<b>Total Receipts</b>	<b>17,877</b>	<b>17,877</b>
<b>Disbursements:</b>		
Mission and Service	8,702	
Memorials	75	
UCW Presbyterial Dues/Fees	423	
Literature; Kitchen; Camperships	0	
Miscellaneous	226	
Flowers	246	
Bank Charges	0	
Bazaar	0	
Donations	8,930	
Unit Projects; UCW Projects	0	
Staff Gifts	325	
<b>Total Disbursements</b>	<b>18,927</b>	<b>18,927</b>
<b>Balance Dec. 31, 2020</b>		<b>1,500</b>
<b>Amount held by Units</b>		<b>0</b>
<b>Opening Balance Jan. 1, 2021</b>		<b>1,500</b>

<i>UCW Reserve Account</i>	<b>Life Membership</b>	<b>Memorials</b>	<b>Parlour Kitchen</b>	<b>Refugee Fund*</b>
<b>Opening Balance Jan. 1, 2020</b>	<b>42</b>	<b>9,447</b>	<b>0</b>	<b>618</b>
Add transfer from General fund	0	75	0	0
Less expense-2019 correction	0	-248	0	0
<b>Balance Dec. 31, 2020</b>	<b>42</b>	<b>9,274</b>	<b>0</b>	<b>618</b>

\* Designated Fund for Rideau Park Refugee Fund

## MINISTRY AND PERSONNEL

The Ministry and Personnel Committee has supported our staff members through some very unusual and often stressful times during 2020. We were asked to look at the M&P portion of the 2020 budget, to identify opportunities for cost savings. Council subsequently eliminated the position of Administrative Assistant, effective December 31, 2020. Debby Gerro's pleasant and helpful personality will be greatly missed in the front office. At the Annual meeting in February, it was voted upon and agreed that the cost-of-living increase for 2020 would be zero for all staff and that the hours of the Pastoral Care Minister would be reduced from fourteen to ten.

Other staff related items included:

- The probation for our new custodian, Geoff Scollick, was successfully completed.
- Judy Paré retired from her position as liaison for Debby Gerro. She had diligently undertaken this job for many years and will be greatly missed as a valued member of our committee.
- The updating of staff job descriptions, begun in 2019, was successfully completed this year.
- The Covid global pandemic affected us greatly and, as of mid-March, our church doors were closed and staff members were asked to work from home when possible. Both M&P and staff were able to creatively undertake some of our previous endeavours, but in a much smaller and more carefully structured manner.
- Steve and Elizabeth, Andrew and Iain, along with Jenni Leslie, minister and Gavan Quinn, Music Director of Kitchissippi United, created weekly website worship services (thanks to the technical skills of Doreen and Brian Hamilton). This wonderful gift allowed our congregation to remain connected throughout this trying time.
- We thank all staff members for continuing with their work and support of the undertakings of Rideau Park as best as they could, adjusting and modifying activities as needed throughout the very trying times imposed by the pandemic. We very much appreciate their dedication.
- Donations from our congregation and subsidies from the government allowed us to continue to pay our staff their salaries and to pay all ongoing bills. We are truly blessed.

My time as Chair of M&P will be coming to an end in February of 2021. I have been fortunate to have had the committed support of the members of this committee during my term: Anne Blades, Wayne Bond, Alyce Dunnewold, John Durkee, Christy Harris, and Cam Jeffrey. This undertaking has been a huge growing experience for me, one that I will always treasure.

Respectfully submitted,

Carolyn Scollick, Chair



## PROGRAMS

### Worship and Music

Members: Karen Lamb (Co-chair), Sharon Sanderson (Co-chair), the Rev. Steve Clifton, the Rev. Elizabeth Bryce, Andrew Ager, Nancy Begg-Durkee, Barry Dewis, Gord Dewis, Sue Geffken-Graham, Heather Ingrams, Marilyn Law, Iain Macpherson. Under the new organizational structure, Steven Neal is our liaison with Council. The committee met in person the first months of 2020 and continued to meet regularly via Zoom for the remainder of the year.

Services before Covid restrictions included a shared service at Emmanuel, UCW installation, I Have a Dream Sunday with guest speaker Rabbi Deborah Zuker, Worshiplude, Scouting Sunday and recognition of elders and stewards as those positions disappeared with the new organizational structure.

In February Tim O'Loan, a member of the Dene indigenous nation, attended our meeting and discussed our acknowledgement that we meet on unceded Algonquin territory.

The committee spent time studying the health requirements and preparing for safe opening of the church to in person worship but this only happened with a small number of people a few times in the Fall, before Public Health guidelines made it unwise to continue.

Since mid-March when we began live streaming only, technology has allowed us to have more guest speakers. Special guests have included Rob Oliphant for Pride Sunday in June, Eric Luckas as anniversary speaker, Kristina Inrig and Diana Brushey recorded a conversation for Creation Sunday, Jordan Sullivan preached on the Anniversary of becoming Affirming, and there was a YAYA presentation by the Camp Awesome leaders. Kitchissippi arranged for members of their congregation to help lead worship on Indigenous Prayer Sunday. Virtual communion was celebrated twice with participants using elements in their homes. Some Christmas services and concerts were a streaming of last year's programs. The pageant, under the leadership of Andrea Laliberté, was a virtual event.

Since moving to webcast services only, we were happy to have the Rev. Jenni Leslie, Gavan Quinn and the congregation of Kitchissippi United join us.

Thanks to Steve, Elizabeth and Jenni for inspiring worship leadership and adapting under extraordinary circumstances. Thanks also to Iain, Andrew and Gavan for their music leadership. The choir has not met since mid-March but archived hymns and anthems have been inserted into the webcasts. Iain also organized some choir members to record music at home which he arranged into choral pieces. Many thanks also to those who have recorded scriptures, music, stories and announcements that have helped us feel connected as a congregation.

Many thanks to Brian and Doreen Hamilton for technical skills in filming the live portions of the services but also organizing the many different submissions that have made up the excellent webcasts. The average number of people tuning in on Sunday is about 250. This is about three times more than pre-Covid and includes not only Rideau Park and Kitchissippi members but visitors elsewhere in Ontario and internationally.

Respectfully submitted,

Karen Lamb and Sharon Sanderson, Co-chairs

---

### Handbells

A Touch of Brass, directed by Gord Dewis, is one of three adult handbell choirs with about a dozen dedicated members and several volunteer substitutes. La Belle Ensemble, directed by Jeanette Caton, is the second adult handbell choir with about 10 dedicated members who love to take the bells and share their talents within the community.

Ringin' Praise, also directed by Jeanette Caton, are an enthusiastic group who enjoy learning the various bell techniques and sharing their talents at bell concerts.

Due to the pandemic none of our bell or hand chime choirs were able to practice or perform. A Touch of Brass performed in church twice in 2020 prior to shutdown and the handbell choirs have been featured regularly as part of webcasts using archived performances. In lieu of the annual "Ringin' in Christmas" concert at the beginning of Advent, the 2019 concert was re-run on Rideau Park's webcast. Special arrangements to safely record a handbell solo performed by Jeanette Hamilton for the Christmas Eve service.

Jeanette and Gordon would like to thank the congregation, staff and ministers of Rideau Park for their on-going support. It is truly appreciated.

Respectfully submitted,

Gord Dewis and Jeanette Caton

### Chimes/Teen Bells

In early 2020, there were two ringing choirs for young people at Rideau Park United Church: Note-Able Sound Chimes ensemble, for ringers in grades 2-5, directed by Andrea Laliberté with assistance from Erin Brunet-Decaire, Merina Shulist and members of our teen bell choir and Grace Notes Teen Bells, for ringers in grades 6-12, also directed by Andrea Laliberté with the capable aid of Erin Brunet-Decaire and Merina Shulist.

Grace Notes Teen Bells shared their music as part of Worshiplude at Rideau Park in February 2020, a gathering of teens and young adults from across Ontario. They were also fortunate to have the chance to share their music as part of morning worship at Rideau Park in early March, just before the pandemic shut-downs were put in place.

Respectfully submitted,

Andrea Laliberté

### Social Action and Outreach

The Social Action and Outreach Committee started 2020 with several projects in mind and were looking forward to a busy year.

In January, we welcomed Rabbi Zuker to our “I Have a Dream Sunday” followed by a luncheon which was well attended. On March 14, we had an E-Waste Drive which netted us about \$400 for the Refugee Committee. We were to have a luncheon on March 15 with Multi-Faith Housing, however, we suddenly found ourselves in the beginning stages of the Pandemic and everything was shut down. All our plans had to be cancelled and unfortunately we are not sure when we can get together again. Hopefully in the fall.

Seniors programs all started in 2020 with great enthusiasm, but have been in a holding pattern since March, waiting until gatherings are allowed. Christmas Cheer pivoted to providing grocery vouchers and there was great support from the congregation. They were able to support 150 families, as well as giving a donation to the Caring and Sharing Exchange.

Marilyn Law was busy with people in Ottawa wanting to bring in family members from war-torn areas of the world. Several applications have been forwarded to the United Church in Toronto, and several of them have been forwarded to Immigration, Refugees, and Citizenship Canada (IRCC). Rideau Park holds funds in trust for these applicants as they move through the process. We are happy to report that the mother of one of our earlier refugees, Ubah, and her family are among those whose application has been forwarded to IRCC. There are many other people out there who want our help so we will be kept busy.

We did have a Zoom meeting in November when we arranged to forward our yearly donations to several community houses in our area as well as Heron Emergency Food Centre and Multi-Faith Housing.

Sandra Weedmark has been our Chair for several years but she decided to step down at the end of May. She will continue to be a member of the committee but we want to thank her most sincerely for all the work she did over the past few years. Lynn Sherwood has agreed to let her name stand for Chair of the committee at the Annual Congregational Meeting.

I would like to thank the members of the Social Action and Outreach Committee: Rev. Elizabeth Bryce, Sandra Weedmark, Lynn Sherwood and Shailja Verma.

Respectfully submitted,

Marilyn Law, Secretary

### Christian Development

The mandate of the Christian Development Committee (CD Committee) is to take the lead in planning and developing programs and events to promote Christian development for people of all ages in the congregation.

In 2020, Tara Lockhart and Andrea Laliberté continued in their roles as co-chairs of the CD Committee. Rev. Steve Clifton is the Ministerial advisor for CD. Committee members included Kim LeClair, Kim Allo, Diane Lagace, Glen Boyd, Joann Roebuck, Sarah Charron, Meg Steele, Allison Van Diepen, Gary Seymour and Stephanie Bailey.

2020 was a year full of change and challenge for everyone. While January and February proceeded as usual, from March onwards the CD committee worked together to find ways to allow much of our

normal programming to continue, just in new and creative ways. Fortunately, we have dedicated volunteers who make it easy to accomplish such a wide range of activities. We also have the wonderful support of Rev. Clifton who ensures we have the resources to accomplish our goals.

With the help of these volunteers, we continued to provide a vibrant Sunday School program which took place both in person and online in 2020. Our classes in January and February ran in person as usual. We were privileged to have dedicated Sunday School teachers providing weekly activities for:

Ages 3, 4, 5	Heidi Hopkin, Allyson Van Diepen, Meg Steele and Neil McGraw
Grades 1-3	Linda Hagglund
Grades 4-6	Andrea Laliberté
Grades 7-9	Ben Presley

There were also many parents who supported these classes as helpers and supply teachers, including Marc Laliberté and Diane Lagace. Our toddler room (ages 0-3) continued to be staffed by paid youth - Hailey Laliberté, Lianne Presley and Rebekah Dillman. We would like to thank Geoff Scollick who ensured that Sunday School rooms were ready on Sunday mornings and also took care of the special arrangements and changes as requested.

In March 2020, our in-person classes were closed as per Public Health regulations. Council asked Hailey Laliberté, one of the paid nursery staff, to take on providing an online Sunday School experience for our children from March until mid-May (when our normal Sunday School year would conclude). Hailey created a series of pre-recorded Sunday School videos from March to mid-May, which were posted on her Rideau Park YouTube Channel. The videos featured a weekly Bible lesson, dramatic re-enactments, games, crafts and other activities that were seen by hundreds of people both from Rideau Park and from congregations across North America. The CD committee is grateful to Hailey and her family for their hard work keeping our kids connected in the spring. You can access Hailey's Sunday School lessons on her YouTube channel, starting with her first lesson here: <https://youtu.be/mQyKLSucoZk>

Camp Awesome this year went online. Four camp coordinators, including Rebekah Dillman, did a remarkable job of building community online, creatively using all kinds of online and digital tools to connect with children across the Ottawa region.

In the fall of 2020, Public Health regulations continued to prohibit in-person Sunday School classes. The CD committee voted to host "in-camera" live Sunday School experiences. Our teaching staff shifted as Andrea Laliberté retired (after 13 years of teaching). Linda Hagglund, our normal grade 1-2-3 teacher, took a sabbatical this year as well. Our teachers from September to December included:

Kindergarten (3-4-5 year olds)	Allison Van Diepen, Meg Steel and Neil McGraw
Grade 1-2-3	Heidi and Haden Hopkin
Grade 4-5-6	Allyson Hopkin
Grade 7 to high school	Ben Presley

The CD committee thanks all our in person and online teachers for their flexibility, creativity and dedication throughout this unprecedented year!

Our confirmation class has been meeting on Zoom since September. We have 13 teenagers in our group, four of whom are from Kitchissippi. Alyce Dunnewold and Rev. Steve are co- leading this group which meets monthly.

As we approached Christmas, several traditions "pivoted" and took place in new ways. Heidi Hopkin and her family once again shepherded our ShoeBox program which supported Banff House and Minwaashin Lodge. Instead of families filling a shoe box this year, online donations were made that were then given

to the two programs involved. Rideau Park was incredibly generous and both program donations exceeded their goals. The women of Minwaashin Lodge, received gift cards for retailers that they frequent in their neighborhood. One hundred and thirty Christmas stockings were filled for the children of Banff Ledbury. Remaining funds will be directed to Banff Community House in the New Year.

Our Annual Christmas Pageant moved online and welcomed over 60 participants from both Rideau Park and Kitchissippi congregations. Andrea and her family delivered costumes and props to everyone involved who then recorded their performances safely at home. Andrea then digitally “stitched” together the performances into a full-length dramatic presentation (80 minutes) that was viewed “live” by over 400 people on Sunday, December 13<sup>th</sup> and was viewed on YouTube later by over 300 viewers. Andrea is incredibly proud of all of the participants involved. You can see the Pageant on YouTube here: <https://youtu.be/cIB9m3NTtEs>

For our children and youth, it has been a long year. Many of the things that bring them joy - sports, music, dance, community – have been taken away in 2020. School is different and strange and demanding. When you are a young person a year is a very long time. In a year like this we might all offer whatever encouragement, support and community we can to them.

The CD committee comprises dedicated members who generously give of their time and talents. We would like to thank all of the committee members for their hard work this past year in particular and we would like to welcome anyone who wishes to join in!

Respectfully submitted,

Andrea Laliberté and Tara Lockhart, Co-Chairs

### Sunday School Financial Report

January 1 to December 31, 2020

Balance: January 1, 2020		<u>609.57</u>
Plus Receipts:		
Envelope	4.00	
Loose	106.15	
Other	1.60	
		<u>111.75</u>
Sub-total		721.32
Less Payments		
NO Expenses in 2020		
Balance as December 31, 2020		<u>721.32</u>

Respectfully Submitted,

J. Durkee, Treasurer, Sunday School

## Spirituality

One definition of spirituality is "the art of making connections." The one is made up of many. Everything is related to everything else. God is all in all.

In 2020, when we have had to intentionally disconnect in terms of being in the same spaces, we have learned to connect in new ways.

Our planned Lenten program had one in-person session and then as the pandemic began we moved the remaining events online.

Beginning in March we began to use social media more heavily as a way to connect, posting daily prayers on Facebook from March through June. Our Facebook group has more than doubled in membership in 2020.

Zoom connections have been important. We held an online study in the spring and ran a series of evening retreats in Advent. We have gathered for meditation online every Thursday morning from September through December and plan to continue on into 2021. We have many more people gathering online for meditation than we had meeting in person before the pandemic began. Guides to the practice of meditation have been posted online too. Kitchissippi has joined with us in these virtual gatherings, so we have been connecting beyond our congregation in new ways.

We have continued in our shared communal spiritual practice of worship, now exclusively online. Our webcast has become pivotal in connecting us in this strange time. We have regular worship attendees in places like Saskatoon and Guelph and occasional connectors in places as far flung as Cape Town and Addis Ababa. We have had speakers connect from beyond Ottawa too.

With one mind and one voice [may] you . . . glorify the God and Father of our Lord Jesus Christ. (Romans 15:6)

As you, Spirit, with the Father and the Son are one God.  
Grant that all may be one; grant unity to the human family.  
Sole breath of every living thing, may all be one who, in you,  
live and move and have their being. Amen

Respectfully submitted,

Rev. Steve Clifton

## Environmental Action

The first year of the Environmental Action Committee as its own committee was curtailed by Covid, but we focused on developing many partnerships in the community with a hope of bringing in a series of guest speakers in 2021.

Rideau Park has also joined the energy benchmarking program with Greening Sacred Spaces so we've had our first look at the energy data reporting coming from the ENERGY STAR PORTFOLIO Manager tool.

Another key partner is the Peace and Environment Resource Centre that works out of The Apartment at the church. They celebrated 35 years of producing the *Peace and Environment News*, a publication on sustainability and peace issues that is produced right here at the church. This quarterly publication is always available in the church lobby as well as electronically.

The Environment Committee continues to connect with all the different organizations that work at the

apartment Sustainability Office or through broader connections.

In 2020, RPUC hosted two meetings of the National Capital Environmental Nonprofit Network in Beecroft Hall, including an ENGO winter roundtable that highlighted many organizations in the community.

We now have an important opportunity to bring some guest speakers into the church through Zoom learning sessions.

One last success story for 2020 was the partnership with Kitchissippi United to lead a Caring for Creation service.

Respectfully submitted,

Kristina Inrig (Rideau Park United) and Diana Brushey (Kitchissippi United)

## PEOPLE

### Congregational Life

The Congregational Life Committee, as with other committees, was restricted in its operations owing to the pandemic. Our core mandate is facilitating and helping to maintain connections among participants in the life of Rideau Park United Church.

This year, we did this mainly by telephoning participants, particularly those who may not have or may not be able to maintain a virtual connection through the internet. Many people participated in making calls, including former elders who agreed in the spring to make rounds of calls, as well as current members and associates of the committee. Pastoral Care committee members reached out to more Rideau Park people and the Ministers also made a special effort to contact everyone associated with Rideau Park. There are also many of you who faithfully check in with others at Rideau Park, whether as part of a committee, group, activity circle, or simply as a friend.

The regular Rideau Park e-mails, seasonal letters, updates from Council, and Church Post were welcomed more than ever this year. To all of you who participated in helping us keep up our connection with one another, please know that your service to our community is greatly appreciated. While we long to see each other again, we know we are not alone.

Respectfully submitted,

Alyce Dunnewold, Chair

### Affirming Community of Faith

Rideau Park became an Affirming Community of Faith in 2019, which involves an ongoing commitment to support the United Church's Affirming Ministries and to take further steps as a community to live out our desire to be radically inclusive of LGBTQ2+ people. In 2020, we purchased two rainbow banners which were hung on the outside of the church building as a visible expression of our Affirmation. We also regularly incorporated symbols and statements of Affirmation in our worship services, and had two guest speakers: Reverend Rob Oliphant on Pride Sunday in June and Jordan Sullivan at our anniversary of becoming an Affirming Community of Faith in September.

Respectfully submitted,

Alyce Dunnewold for the Task Group on Being an Affirming Community of Faith



## Nominations

2020 was a very strange year as you know. The Nominating Committee for several years has planned an Appreciation Sunday, highlighting various groups in the church. This usually took place in April. Unfortunately we were unable to do that and it does not appear that we will be able to do it this year.

We were, however, able to recruit some new people for Council and some committees. Jeff Allo agreed to take over as Chair of the Ministry and Personnel Committee and Lynn Sherwood will be the Chair of the Social Action and Outreach Committee. As well she has agreed to continue as Secretary for Council. Ken Tong becomes Chair of Council. Under the new system we still do not have to recruit a Vice-Chair for Council this year, as Patricia Whitridge becomes Past Chair. Andrea Laliberté has agreed to stay on as Co-Chair of Christian Development for one more year. Michael Presley will take over as Chair of the Trustees, but Sheila Faure will remain on the Trustees. Ron MacPherson has agreed to be the Liaison for Resources. Marilyn Law will continue for one more year as Chair of Nominations.

Respectfully submitted,

Marilyn Law, Chair

## COUNCIL

### Council Executive (7)

Past Chair	Patricia Whitridge	(2022)
Chair	Ken Tong	(2023)
Secretary	Lynn Sherwood	(2023)
Treasurer	Bob Roden	
Order of Ministry		

### Permanent Committee Representatives

Chair of Stewardship	Gavin Currie	(2023)
Regional Representative (EOORC)	Doug Robinson	
Chair of Ministry and Personnel	Jeff Allo	(2024)
Chair of Trustees	Michael Presley	(2024)
UCW Representative	Nancy McPherson	

### Members at Large (7)

Heather Ingrams	(2022)
Laura Presley	(2022)
Gaveen Cadotte	(2023)
Jeremy Geelen	(2023)
Heather Boyd	(2024)
Stephanie Bailey	(2024)
Meg Steele/Neil McGraw (one position)	(2024)

### Liaisons (3)

<b>Programs Liaison</b>	Steven Neal	(2023)
Co-Chairs of Worship and Music	Karen Lamb	(2023)

	Sharon Sanderson	(2023)
Chair of Social Action and Outreach	Lynn Sherwood	(2024)
Co-Chairs of Christian Development	Andrea Laliberté	(2023)
	Tara Lockhart	(2023)
Chair of Environmental Action	Kristina Inrig	(2023)
<b>People Liaison</b>	Drew Presley	(2023)
Chair of Congregational Life	Alyce Dunnewold	(2023)
Chair of Nominations	Marilyn Law	(2022)
Chair of Pastoral Care	Brian Neal	(2023)
Chair of Congregational Development	Greig Scott	(2022)
<b>Resources Liaison</b>	Ron MacPherson	(2023)
Chair of Finance	Bob Roden	(2023)
Chair of Property	Brian Hamilton	(2023)
Chair of Administration and Communications	Vacant	
<b>Trustees</b>		
Chair	Michael Presley	(2024)
Members	Lynda Becker	
	Catherine Ennis	
	Sheila Faure	
	Diane Keevil Harrold	
	Ron Little	
	Susan Vaughan	

## Pastoral Care

This has been a difficult and challenging year for everyone. Like everything else, the work of the pastoral care team had to adapt. The public health guidelines were especially clear about avoiding contact with vulnerable persons, so special events like the “Our Hearts Remember” service had to be cancelled. We also had to stop visiting the people on our visitation list and find other ways to stay connected with them. For the most part, this meant calling them up on the phone, or in some cases calling their families to stay in touch. We also made good use of greeting cards to send a friendly message, in particular at Easter and Christmas.

In June, the Ottawa Pastoral Care Training Program ran a short online seminar to help pastoral care teams figure out how to provide Pastoral Care in an Era of Physical Distancing. Two of our members signed up for this training and shared the ideas with the rest of the team during our own Zoom meeting. Most of the ‘keeping connected’ ideas that were offered were already in play with our group, but there were also important points made with respect to:

- confidentiality during a virtual visit (if they have a video chat app on a cell phone or tablet), for example, who else is in the room
- the mental health impacts of social/physical distancing for people that may have already been feeling isolated and alone
- the increasing importance of self-care so that we are well enough to help others.

The Pastoral Care Team, which includes 16 volunteers and our Pastoral Care Minister, Rev. Georgina

Fitzgerald, provides pastoral care to about 40 people on a regular basis. With no special events to plan, the Pastoral Care Committee only needed to meet twice this year to keep coordinated. We used Zoom to conduct these meetings online. We look forward to a return to normalcy with in-person meetings and in-person visits. The in-person visits were always greatly appreciated, and it is probably fair to say that the visitors miss these visits as much as we do. For now, we will continue to adapt as best as possible to meet the pastoral care needs of our church community.

Respectfully submitted,

Brian Neal, Chair

### **Congregational Development**

One of our objectives heading into 2020 was to build upon our External Partnership Strategy whereby we would work with external partners who already had a relationship with our church, looking for opportunities to increase the vibrancy of both parties through the development of new initiatives, or the strengthening of existing ones. In addition, an article in the Ottawa Citizen pointed out that for the first time in Canadian history, one-person households were the most common household type in the country. A greater emphasis on reaching out to these households was also an objective.

By the end of the first quarter, the spread of Covid and the resulting measures to limit its transmission required a paradigm shift in the approach that Rideau Park United Church used to deliver our ministries and programs throughout the community. We had to shift from a predominately in-person experience with a remote backup, to a predominately remote experience with a (very) limited in-person backup. Thanks to the dedicated efforts of some very talented people over the years, Rideau Park United Church was well positioned to take on this challenge.

In early April we sent emails to neighbouring community associations, city councillors, retirement/nursing homes and foodbanks, informing them of the remote connection capabilities available at Rideau Park United Church, inviting them to share this information with their communities if they thought it would be helpful. Our monthly advertisements in Vistas lifted up our remote presence under the banners "Spiritual Connections," "Keeping in Touch," "Church at Home," "We've Got Connections" and "Celebrate Christmas at Home."

While we miss the in-person connections that we enjoyed before the pandemic, we are thankful that we can still access many of the ministries and programs remotely. We invite you to share these connections with those in your own communities, so that they might benefit too.

Respectfully submitted,

Greig Scott (Chair) with thanks to committee members: Wayne Bond, Rev. Steve Clifton, Brian Hamilton, Mary Lynne Holton, Marilyn Law, Drew Presley, Michael Presley, Lisa Sadler and Ken Tong

## RESOURCES

### Finance

This is the first report of the new Finance Committee, which has taken over responsibility for the church's financial affairs as part of the new organizational structure. This work was formerly done by the Stewards Committee. The Finance Committee is made up of Brenda Bethune, Joann Roebuck, Debi Brown (ex officio) and Bob Roden.

During the year we met five times via Zoom, to oversee the church's financial needs, while the church navigated these uncertain times. Work primarily centered on:

- monthly financial status monitoring and communication;
- establishing an e-transfer capability for congregational donations;
- assessing qualification for government subsidies, and applying for subsidies where appropriate;
- preparing a draft 2021 budget;
- preparing and making regular bank deposits during the lockdowns;
- working on a process for managing refugee sponsorship funds.

Under the circumstances, we had a successful year financially. We were able to pay our staff for the entire year. In addition, we were able to achieve a substantial surplus. This surplus should enable us to weather any financial challenges, while we await the start of the proposed strategic planning exercise, which was delayed as a result of Covid.

I would like to thank members of the committee for contributing their time and talent to the work of the committee during this difficult year. While 2020 has presented challenges, normal operations did occur up until mid to late March. We would like to thank the following individuals and groups, who have contributed, when called upon during the year, to the financial work of the church:

- Barbara Jeffrey, Envelope Secretary;
- Ron MacPherson, the committee's Liaison Officer;
- The counting volunteers, who assist Debi Brown;
- The UCW, who generously contributed to the M&S Fund; and
- Debi Brown, our Administrator, who maintains the financial records and looks after the day-to-day office operations.

If you are interested in participating in this committee please contact any of the current members.

Respectfully submitted,

Brenda Bethune  
Bob Roden, Chair

Debi Brown  
Joann Roebuck

**Rideau Park United Church  
2020 Statement of Financial Position  
as at December 31<sup>st</sup> 2020**

<b>Assets*</b>	<b>2020</b>	<b>2019</b>	<b>Variance</b>
GICs/Cash in Bank	190,459	119,898	70,561
Petty Cash	350	350	0
Receivable	19,129	34,593	-15,464
Prepaid Expenses (insurance and other)	2,772	2,228	544
GICs/Cash held in Trust	657,778	229,511	428,267
<b>Total Current Assets</b>	<b>870,488</b>	<b>386,580</b>	<b>483,908</b>
<b>Total Fixed Assets</b>	<b>217,927</b>	<b>217,927</b>	<b>0</b>
<b>Total Assets</b>	<b>1,088,415</b>	<b>604,507</b>	<b>483,908</b>
<b>Liabilities</b>			
Accounts Payable and Acc. Liabilities	52,217	26,635	25,482
HST Payable (recoverable)	-13,463	-11,831	-1,632
Deferred Revenue	725	975	-250
Refugee Sponsorships	657,778	229,511	428,267
50+ Fitness	1,275	560	715
Payable to Trustees	0	50,786	-50,786
<b>Total Liabilities</b>	<b>698,532</b>	<b>296,636</b>	<b>401,796</b>
<b>Equity (Restricted Funds)</b>			
Memorial	7,773	5,504	2,269
Benevolent	10,573	8,540	2,033
Foundation for Ministry	4,374	6,417	-2,043
Christmas Cheer	3,904	1,911	1,993
Music Funds	30,162	30,198	-36
Property Renewal	36,809	19,620	17,189
Refugee Family Fund	22,656	18,345	4,311
Miscellaneous Projects	5,894	4,259	1,635
<b>Total Restricted Funds</b>	<b>122,145</b>	<b>94,794</b>	<b>27,351</b>
<b>Equity (Other)</b>			
Opening Equity	-4,851	5,787	-10,638
Invested in Capital Assets	217,927	217,927	0
Net Increase (Decrease) in Funds	54,662	-10,637	65,399
<b>Total Other Equity</b>	<b>267,738</b>	<b>213,077</b>	<b>54,761</b>
<b>Total Liabilities and Equity</b>	<b>1,088,415</b>	<b>604,507</b>	<b>483,908</b>

\*Rideau Park's building and equipment (including pipe organ) are currently insured for \$10,132,000. The church was last appraised in 2009.

**Rideau Park United Church  
2020 Statement of Operations  
for the year ended December 31<sup>st</sup>**

<b>Ministries and Programs (M&amp;P) Fund</b>					
	<b>2020</b>	<b>2020</b>	<b>Variance</b>		<b>2019</b>
<b>REVENUES - M&amp;P</b>	<b>Actual</b>	<b>Budget</b>	<b>to Budget</b>	<b>%</b>	<b>Actual</b>
RPMP Envelopes	469,021	450,000	19,021		438,286
Special Appeals	7,311	15,000	-7,689		17,606
Use of Premises	31,114	53,000	-21,886		54,188
Government Wage Subsidies	41,390	0	41,390		0
Britt Fund	15,781	10,000	5,781		12,336
UCW	0	12,500	-12,500		15,094
Loose/Visitors	786	9,000	-8,214		9,503
Weddings/Funerals	1,384	7,000	-5,616		7,665
Sundry	533	5,500	-4,967		5,303
<b>Total Revenues</b>	<b>567,320</b>	<b>562,000</b>	<b>5,826</b>		<b>559,981</b>

<b>EXPENSES - M&amp;P</b>					
<b>Council</b>	<b>8</b>	<b>0</b>	<b>8</b>		<b>0</b>
<b>Stewardship</b>	<b>947</b>	<b>740</b>	<b>207</b>	<b>-28%</b>	<b>718</b>
<b>Salaries and Benefits</b>	<b>396,354</b>	<b>433,583</b>	<b>-37,229</b>	<b>-18%</b>	<b>436,410</b>
<b><u>Programs</u></b>					
<b>Worship and Music</b>	<b>1,046</b>	<b>4,500</b>	<b>-3,454</b>	<b>-77%</b>	<b>4,304</b>
<b>Christian Development</b>	<b>1,840</b>	<b>3,500</b>	<b>-1,660</b>	<b>-47%</b>	<b>3,101</b>
<b>Social Action and Outreach</b>	<b>4,067</b>	<b>4,800</b>	<b>-733</b>	<b>-15%</b>	<b>4,745</b>
<b>Environment</b>	<b>0</b>	<b>200</b>	<b>-200</b>		<b>200</b>
<b><u>People</u></b>					
<b>Congregational Life</b>	<b>295</b>	<b>500</b>	<b>-205</b>	<b>-41%</b>	<b>0</b>
<b>Congregational Development</b>	<b>439</b>	<b>1,000</b>	<b>-561</b>	<b>-56%</b>	<b>933</b>
<b>Pastoral Care</b>	<b>-281</b>	<b>400</b>	<b>-681</b>	<b>-170%</b>	<b>268</b>
<b><u>Resources</u></b>					
<b>National Assessment</b>	<b>27,997</b>	<b>27,997</b>	<b>0</b>	<b>0%</b>	<b>27,997</b>
<b><u>Property</u></b>					
<b>Lighting</b>	<b>4,297</b>	<b>6,420</b>	<b>-2,123</b>		<b>6,409</b>
<b>Heating</b>	<b>12,085</b>	<b>14,120</b>	<b>-2,035</b>		<b>14,123</b>
<b>Water</b>	<b>3,506</b>	<b>4,070</b>	<b>-564</b>		<b>4,069</b>
<b>Cleaning/Mtnce. Supplies</b>	<b>2,407</b>	<b>8,650</b>	<b>-6,243</b>		<b>8,658</b>
<b>Repairs</b>	<b>9,438</b>	<b>7,200</b>	<b>2,238</b>		<b>6,666</b>
<b>Snow Removal</b>	<b>4,200</b>	<b>6,900</b>	<b>-2,700</b>		<b>6,935</b>
<b>Property Taxes/Fire Safety/Security</b>	<b>535</b>	<b>240</b>	<b>295</b>		<b>211</b>
<b>Insurance</b>	<b>14,018</b>	<b>12,900</b>	<b>1,118</b>		<b>12,864</b>
<b>Total Property</b>	<b>50,486</b>	<b>60,500</b>	<b>-10,014</b>	<b>-17%</b>	<b>59,935</b>

(Continued)

EXPENSES - M&P continued	2020 Actual	2020 Budget	Variance to budget	%	2019 Actual
<b>Administration &amp; Communications</b>					
Communications (advertising)	520	900	-380		956
Office Supplies	816	1,200	-384		1,134
Office Support/Computer	1,349	1,200	149		1,236
Postage	1,966	1,500	466		1,526
Telephone	5,194	4,920	274		4,793
Printing	6,804	8,520	-1,716		8,534
Bank and Interest Charges	1,063	1,320	-257		1,307
Miscellaneous	69	600	-236		959
Professional Fees	7,012	6,300	712		6,321
Worship - Coffee/Refreshments	952	1,500	-548		1,028
Wedding/Funeral expense	750	4,050	-3,300		4,214
<b>Total Administration</b>	<b>26,495</b>	<b>32,010</b>	<b>-5,220</b>	<b>-17.20%</b>	<b>32,008</b>
<b>Total Expenses</b>	<b>509,693</b>	<b>569,730</b>	<b>-57,800</b>	<b>-17.80%</b>	<b>570,618</b>
<b>Net Change in M&amp;P Fund</b>	<b>57,627</b>	<b>-7,730</b>	<b>63,833</b>		<b>-10,637</b>

**Mission and Service (M&S) Fund**

Revenue - M&S    Envelopes	47,761	50,000	-2,239	-4.50%	50,029
Expenses - M&S	50,726	50,000	726	1.50%	50,029
<b>Net Change in M&amp;S Fund</b>	<b>-2,965</b>	<b>0</b>	<b>-2,965</b>		<b>0</b>

<b>Sum of Net Change in Funds</b>	<b>54,662</b>	<b>-7,730</b>	<b>62,492</b>		<b>-10,637</b>
-----------------------------------	---------------	---------------	---------------	--	----------------

**Rideau Park United Church  
2021 Budget Ministries and Programs (RPMP) and  
Mission and Service (M&S) Funds**

<b>Revenues RPMP Fund</b>	<b>2019 Actual</b>	<b>2020 Budget</b>	<b>2020 Actual</b>	<b>Proposed 2021 Budget</b>
RPMP Envelopes	438,286	450,000	469,021	440,000
Special Appeals	17,606	15,000	7,311	12,000
Use of Premises	54,188	53,000	31,114	35,400
Government Wage Subsidies	0	0	41,390	0
Britt Fund	12,336	10,000	15,781	12,500
UCW	15,094	12,500	0	10,000
Loose/Visitors	9,503	9,000	786	4,000
Weddings/Funerals	7,665	7,000	1,384	6,000
Sundry	5,303	5,500	533	750
<b>Total Revenues</b>	<b>559,981</b>	<b>562,000</b>	<b>567,320</b>	<b>520,650</b>
<b>Expenses RPMP Fund</b>				
Council	0	0	8	200
Stewardship	718	740	947	1,000
Ministry & Personnel (2)	436,410	433,583	396,354	400,484
<b><u>Programs</u></b>				
Worship and Music	4,304	4,500	1,046	5,940
Christian Development	3101	3,500	1,840	2,125
Social Action and Outreach	4,745	4,800	4,067	4,500
Environment	200	200	0	500
<b><u>People</u></b>				
Congregational Life	0	500	295	900
Congregational Development	933	1000	439	1,500
Pastoral Care	268	400	-281	233
<b><u>Resources</u></b>				
National Assessment	27,997	27,997	27,997	27,997
Property Operations (1)	59,935	60,500	50,486	57,690
Administration & Communication	32,008	32,010	26,495	28,210
<b>Total Expenses</b>	<b>570,618</b>	<b>569,730</b>	<b>509,693</b>	<b>531,279</b>
<b>Net Change RPMP Fund</b>	<b>-10,637</b>	<b>-7,730</b>	<b>57,627</b>	<b>-10,629</b>

(Continued)



Mission and Service Fund RPMP Fund	2019 Actual	2020 Budget	2020 Actual	Proposed 2021 Budget
Revenues M&S Fund	50,029	50,000	47,761	42,000
Expenses M&S Fund	50,029	50,000	50,726	42,000
<b>Net Change M&amp;S Fund</b>	<b>0</b>	<b>0</b>	<b>-2,965</b>	<b>0</b>
<b>Total Revenues</b>	<b>610,010</b>	<b>612,000</b>	<b>615,081</b>	<b>562,650</b>
<b>Total Expenses</b>	<b>620,647</b>	<b>619,730</b>	<b>560,419</b>	<b>573,279</b>
<b>Revenue over Expenses</b>	<b>-10,637</b>	<b>-7,730</b>	<b>54,662</b>	<b>-10,629</b>

(1) Capital expenditures included in the 2021 Property Renewal Plan

(2) Includes COLA of 1.35% for Staff

**Rideau Park United Church  
2020 Apportionment of Rideau Park Ministry and Personnel Costs  
for the year ended December 31<sup>st</sup> 2020**

		2019 Actual	2020 Budget	2020 Actual	2021 Budget
Minister of Community and Worship	*	83,532	83,946	83,947	84,514
Minister of Christian Family and Worship	*	83,532	83,946	83,947	84,514
Pastoral Care Minister	*	28,148	24,247	24,247	20,342
Restorative Care		-1,121	0	-16,449	0
Administrator	*	39,590	39,590	40,140	46,812
Administrator (supp. hours)		0	1,000	0	1,250
Custodian	*	41,148	33,000	33,000	33,446
Custodial (casual)		1,015	1,000	0	1,000
Summer Student		3,915	4,000	0	0
Administrative Assistant	*	27,601	27,601	27,601	0
Music Ministry Co-Ord.	*	20,694	20,694	20,694	20,973
Organist	*	20,694	20,694	20,694	20,973
Lead Singers		12,507	12,400	7,100	4,960
Music (casual)		600	1,000	0	2,000
United Church Pension		49,104	50,400	50,092	50,400
EI/ CPP/WSIB		20,676	21,500	19,684	21,000
Travel		2,670	3,500	317	2,300
Education		2,040	5,000	1,340	6,000
Miscellaneous		65	65	0	0
<b>Total Salaries and Benefits</b>		<b>436,410</b>	<b>433,583</b>	<b>396,354</b>	<b>400,484</b>

\*2021 Cost of living adjustment: 1.35%

Note: Mileage rate \$0.41 per km

**Rideau Park United Church  
2020 Fund Account Reconciliation  
as at December 31st, 2020**

	<b>Balance Jan. 1, 2020</b>	<b>Donations Received</b>	<b>Less Disbursements</b>	<b>Balance Dec. 31, 2020</b>
Memorial Fund	5,504	7,721	5,452	7,773
Benevolent Fund	8,540	2,658	625	10,573
Christmas Cheer	1,911	15,599	13,606	3,904
Foundation for Ministry	6,417	5,959	8,002	4,374
Property Renewal	19,620	38,780	21,591	36,809
Music Fund	9,506	0	136	9,370
- Children	144	0	0	144
- Handbells	20,548	100	0	20,648
RPUC Refugee Fund	18,345	4,311		22,656
Miscellaneous Projects	4,259	7,567	5,932	5,894
<b>Totals</b>	<b>94,794</b>	<b>82,695</b>	<b>55,344</b>	<b>122,145</b>

### Property

The Rideau Park Property Committee is responsible for the management of the temporal, non-financial, affairs of Rideau Park United Church.

Members of the Committee are Brian Hamilton, Chair, Rod Hagglund, Mark Inman, Adam Kurz (resigned), Ron MacPherson (Council Liaison), Geoff Scollick (Custodian, ex office) and Debi Brown (Administrator, Committee Secretary, ex officio).

The Committee met three times in 2020. Covid and uncertainty from the pandemic severely impacted the use of Rideau Park's church facilities. The Committee decided to cautiously restrain its work and steward its resources until a clearer understanding of the way ahead for our church community is apparent.

In addition to the day-to-day property operations during the pandemic, the waste management contract was amended, hand sanitizing stations were installed, the security system was upgraded for remote control, replacement cost documents for the organ and stained-glass windows were provided to the insurance broker and heating system pumps and a radiator were replaced. A stained-glass window was installed in the McKennitt Chapel.

The lower overall operational property expenses in 2020 due to the closing of the church during the pandemic helped to mitigate the financial strain on church finances.

Property Renewal - reduced work and disbursements in 2020 allowed us to build an increased positive yearend Property Renewal Fund balance.

Within this context some of the 2020 Property Renewal accomplishments include:

- Installation of five new metal and glass staff office doors;
- Exterior brick repair and parging;
- Purchase of a building vacuum cleaner and mini video switcher;
- Research for a Cunningham entrance camera/audio communications system for off-hours users and visitors;
- Submitted site survey for the City of Ottawa Backflow Prevention Program;
- Initiation of the documentation of Rideau Park's electrical system by identifying breakers and their corresponding outlets; and
- Quotations for replacement of the Cunningham doors with metal and glass entry system and metal and glass doors for the upstairs hallway by the Parlour.

### Property Renewal

The 2021 Property Renewal Plan identifies door replacement, installation of the Cunningham entrance door camera/audio communications security system as priorities and LED lighting, and Chancel organ and choir microphones as other projects under consideration. As well research on upgrading/replacing the exterior church sign will be undertaken. Work on the 2021 plan will continue to consider the impact of the pandemic and the stewardship of resources. The committee will adapt as times warrant. Your ongoing support for this work is greatly appreciated.

Respectfully submitted,

Brian Hamilton, Chair

### Rideau Park United Church Property Renewal Fund (PRF) as of December 31, 2020

	Amounts	Totals
<b>Opening balance available for projects January 1, 2020</b>		19,620
<b>2020 source of RPF funds</b>		
PAR givings	29,726	
Envelope givings	8,295	
Kitchissippi contribution for webcasting	750	
<b>Total givings and contributions for 2020</b>		38,771
<b>Total available for projects 2020</b>		58,391
<b>2020 PRF funds disbursements</b>		
<b>Interior</b> Office doors replacement	8,497	
Painting doors	1,440	
Hallway interior doors	4,500	
Backflow valve survey	208	14,644
<b>Exterior</b> Tree pruning	520	
Brick repair and parging	1,300	
Various repairs and removals	1,803	3,623
<b>Equipment</b> Vacuum cleaner	623	623
<b>Other</b> Broadcast channel service	1,871	
Webcast editing software	362	
Mini video switcher	468	2,701
<b>Total disbursements 2020</b>		21,591
<b>Balance available for projects January 1, 2021</b>		36,800

**Rideau Park United Church Property Renewal Fund (PRF)  
Year 2: 2020 - 2028 Draft Long Range Property Renewal Plan  
2021 Property Renewal Plan**

	Amounts	Totals
<b>Opening balance available for projects January 1, 2021</b>		<b>36,800</b>
<b>Forecasted source of Property Renewal Funds 2021</b>		
Pledges	35,400	
Envelopes	10,000	45,400
<b>Total PRF funds forecasted for 2021</b>		<b>82,200</b>
<b>Forecasted Property Renewal Funds disbursements 2021</b>		
<b>Sanctuary</b> Storms for north stained glass and Chancel windows	7,500	7,500
<b>Exterior</b> Hedge, shrubs, plants flower bed edging	3,000	
Brickwork repair and parging	2,000	
Exterior LED lighting	3,500	
Beecroft entrance replacement	7,700	16,200
<b>Interior</b> Hot water heat units and pumps	5,000	
Beecroft Hall LED lighting	6,500	
Double doors office hallway and Beecroft Hall	8,500	
- installation and painting	4,000	24,000
<b>Equipment</b> Office technology	3,000	
Webcasting	1,000	
Chancel organ and choir microphones	3,000	
Cunningham entrance door camera/audio		
communications security system (est)	10,000	17,000
<b>Total forecasted PRF disbursements 2021</b>		<b>64,700</b>
<b>Forecasted PRF funds available for projects January 1<sup>st</sup>, 2022</b>		<b>17,500</b>

### Administrative and Communications

Prior to March 2020, Wayne Bond publicized 56 Rideau Park activities and events through community newspapers, the weekly *Our Town* section in the Ottawa Citizen, and our website. Since the lockdown, he has publicized a further 40 of RP's online and virtual activities in Vistas and Riverview Park Review. Lynda Becker has created banners and posted many Covid status changes. Briefly, there was a form on the website for members to register for in-person attendance at Sunday services. As well, we now have more online payment options, due to a new e-transfer set up for direct donations to either the General account or the UCW.

Four issues of Church Post (Nancy McPherson, Lynda Becker) and monthly congregational e-mails from church admin and ministers have updated the congregation. Don Ford still oversees the RP network and keeps email running smoothly. Ron MacPherson is our liaison to Council. Rev. Steve continues to

promote RP online activities on our RP Facebook page, and Rev. Elizabeth began an RP Facebook book and film club shortly after the lockdown. Rev. Georgina has been hosting weekly Zoom sessions on a variety of topics.

Respectfully submitted,

Nancy McPherson

Chair, Administration and Communications Committee

## Rideau Park United Church

**MINUTES OF ANNUAL CONGREGATIONAL MEETING 2020****Sunday, February 9, 2020, 11:15 AM**

Our Mission is to joyfully proclaim a loving God as revealed in Jesus Christ

PRESENT: Patricia Whitridge, (Chair), Cathy Hollands (Recording Secretary), Alyce Dunnewold, Shanti Inman, Carolyn Scollick, John Scollick, Ron MacPherson, Bob Roden, Rev. Steve Clifton, Ken Tong, Rev. Elizabeth Bryce, Judy Paré, Heather Potter, Kristina Inrig, Heather Ingrams, Suzanne Bassett, Valerie Douglas, Iain Macpherson, Wayne Bond, Judith Groeneweg Srna, Bas Groeneweg, Doug Robinson, Wendy Mather, Jeff Woznow, Nancy McPherson, Kathy Groeneweg, Gavin Currie, Pat Currie, Brian Neal, Steven Neal, Marilyn Law, Sheila Faure, Thierry Faure, Garry Lindberg, Marilyn Bailey, Louise Mundle, Mabel Bannerman, Anne Blades, Drew Presley, Lynn Sherwood, Sandra Weedmark, Barbara Jeffrey, Brian Hamilton, Doreen Hamilton, Dave Moreira, John Boos, Karen Lamb, Gordon Dewis, Gaveen Cadotte, Catherine Ennis, Rod Hagglund, Rev. Georgina Fitzgerald, John Dawson, Sheila Black, Nancy Begg-Durkee, John Durkee, Audrey Stewart, Mary Lynne Holton, Nadia Senyk, Elaine Robertson, Doug Robertson, Greig Scott, Bob Rennie and Bernice Rennie.

**The Community Gathers Before God****1. Words of Welcome and Opening Motions:**

Rev. Elizabeth Bryce welcomed those gathered and asked for nominations for a Recording Secretary and Chair for the meeting.

MOTION: Moved by Alyce Dunnewold, seconded by Shanti Inman that the meeting be chaired by Patricia Whitridge, Chair of Council. CARRIED

MOTION: Moved by Ken Tong, seconded by Heather Ingrams that Cathy Hollands be Recording Secretary for the meeting. CARRIED

**2. Lighting of the Christ candle**

Patricia Whitridge lit the Christ candle at 11:36 AM.

**3. Prayer of Approach**

Rev. Elizabeth Bryce opened the meeting with the Prayer of Approach.

**4. Adherents**

MOTION: Moved by Nancy McPherson, seconded by Karen Lamb that all adherents of Rideau Park United Church be permitted to participate and vote at this Congregational Meeting. CARRIED

**5. Approval of the Agenda:**

MOTION: Moved by Gord Dewis, seconded by Mary Lynne Holton that the Agenda be accepted as printed. CARRIED

**Life and Work of the Congregation****6. Receiving the 2019 Annual Reports and Annual Congregation Meeting Minutes of 2019.**

MOTION: Moved by Rod Hagglund, seconded by Heather Ingrams that the 2019 Annual Report, the Minutes of the February 10, 2019 AGM, the Minutes of the Specially Called Congregational Meeting of May 12, 2019 and the Minutes of the November 3, 2019 Fall Congregational Meeting be received as

printed. CARRIED

7. Review Engagement 2018 and Proceeding with Review Engagement for 2019.

MOTION: Moved by Bob Roden, seconded by John Scollick that the Report on the Audit of financial statements for 2019, prepared by Baker-Tilley, be accepted. CARRIED

At a previous Congregational Meeting approval was given to have review engagements performed by Baker-Tilley each year for four years with an audit being conducted every fifth year (most recent audit was 2015).

MOTION: Moved by Bob Roden, seconded by Heather Ingrams that since 2019 is the fourth year following an audit, that the Finance Committee be authorized to engage Baker-Tilley to conduct a Review Engagement with respect to 2019 Financial Statements. CARRIED

Bob Roden stated a copy of the Review Engagement 2018 is in Debi Brown's office. If anyone wants to review it, please contact Bob Roden.

8. Receiving the Financial Statements for 2019

MOTION: Moved by Bob Roden, seconded by Alyce Dunnewold that the Financial Statements found on pages 21 to 23, the Fund Account Reconciliation Statement found on page 26, and the Summary of the Property Renewal Fund found on Page 27 of the 2019 RPUC Annual Report be accepted subject to a Review Engagement for 2020. CARRIED

Bob Roden thanked Debi Brown, Administrator, Debby Gerro, Administrative Assistant, and Barbara Jeffrey for weekly accounting and preparation of tax receipts, Lisa Sadler who filled in while Debi Brown was on sick leave, the Stewards, the Trustees, the UCW, the weekly counters, the budget holders, and the congregation for their support during this past year. It was a team effort.

Bob Roden pointed out that the deficit is about \$10,600 and feels that it is manageable for the coming year. Revenue was approximately \$4,000 over the proposed budget. Loose givings were up. The Britt Fund is up about \$4,300 and the UCW contribution was up about \$1,100 over what was budgeted. Use of Premises was up around \$4,300 as were weddings and funerals. Expenses that were down in 2019: salaries, education, and restorative care. Property expenses were the only expenses that were up. Church activities cost about 25% under their expected budget. The Reserve Fund is higher at this time.

Bob Roden asked that if you have any questions, please contact him.

Patricia Whitridge expressed thanks to Bob Roden for his work on the budget.

9. Report from Council about Personnel Planning

Patricia Whitridge expressed thanks to the Ministry and Personnel Committee for all their work since November 2019. Patricia put forward the following recommendations at this point in order that discussion could take place over the lunch break.

- i.) Rev. Georgina Fitzgerald – will now have a 6 month contract rather than a 12 month. Her 14 hours/week will be reduced to 10 as Pastoral Care Minister. (These changes are contingent upon agreement by the Region, and also by Rev. Georgina Fitzgerald.)
- ii.) COLA Increase. There will be no COLA increase in 2020 for any staff member.
- iii.) Council has written to the EOOR to ask for a Community of Faith Profile.

LUNCH BREAK

10. Questions/Feedback about Personnel planning

Nadia Senyk expressed concern about cutting the hours of the Pastoral Care minister as well as 0% COLA increase for staff.

Brian Hamilton stated that by investing in property renewal, it prevents larger maintenance costs down the road.

Kristina Inrig expressed support for property upgrades. She questioned the cuts to the Pastoral Care Ministry as opposed to other positions. Alyce Dunnewold responded that the M&P Committee will continue to look at it and will get legal advice for other possible action.

#### 11. Budget 2020

Bob Roden is predicting a deficit even though PAR givings are expected to be up. He is expecting the amount from Special Appeals to remain constant, the use of premises to be about the same, the Britt Fund to be worth about \$10,000, Sundry to be \$12,500, and the UCW to contribute \$12,500. The expected total income is \$562,000.

Expenses- salaries will account for 76% of the budget with no COLA

- Programs will cost \$14,900 which account for travel and education, and the Custodial budget
- National assessment (formerly Presbytery dues) will be \$27,997, the same as 2019
- Property costs- \$60,500 with no unexpected large maintenance costs

The Givings target remains the same. Special Appeals will coincide with Easter, Thanksgiving, and Christmas with a year-end appeal, if needed. The base givings from the UCW will be reduced.

Bob questioned that if letters going out were not from the ministers, would the population respond?

Methods of payment is a topic that will be discussed at the Finance Committee.

Debi Brown has set up a new accounting procedure. For example, Environment and Stewardship Committees will have their own budget line.

MOTION: Moved by Kristina Inrig, seconded by Carolyn Scollick that the Proposed Budget include \$500 for the Environment and \$750 for the Stewardship Committees. CARRIED

MOTION: Moved by Bob Roden, seconded by Alyce Dunnewold that the Rideau Park United Church 2020 Budgets for the Ministries and Programs Fund and Mission and Service Fund as presented on pages 24 and 25 of the 2019 Annual Report, be approved as amended. CARRIED with one abstention

#### 12. Strategic Plan

Patricia Whitridge referred to the handout of the Strategic Plan which describes the Background, its Mandate, Progress to Date, Next Steps, and the List of Working Group members.

She stated that most other churches have a Strategic Plan in place. The purpose is to imagine what Rideau Park United Church will look like in 5-10 years. Consultations will be done with members of the congregation, different groups in the church and the hope is that it will be completed by the end of June 2020.

#### 13. Community of Faith Profile

Alyce Dunnewold stated that this is a new instrument that has evolved with the reorganization of the United Church of Canada (UCC). As outlined in the handout, it can coordinate with Strategic Planning. It is meant to guide our church in shaping our ministerial priorities and our vision in order to discern the pastoral support and leadership we need. Patricia Whitridge as Council Chair has written to the Region



to ask for a Community of Faith Profile. The Region will appoint a liaison person. It is noted that it would be advisable to reach beyond the church for opinions. The question of the time line arose. Alyce said it is still unknown, but the hope is that it can be completed by December 2020.

#### 14. Structural Implementation Team/Nominations

Ken Tong stated that we are now in phase III of the new organizational structure, and are now ready to move to the next phase—ADAPT TO NEW STRUCTURE. In 2021 an evaluation will take place.

MOTION: Moved by Marilyn Law, seconded by Ken Tong that the nominations for new appointments and renewal and extension of terms, as set out in the Nominations Report on pages 38 and 39 of the 2019 Annual Report, be adopted. CARRIED

#### 15. Recognition of Leadership that is concluding

Rev. Steve Clifton and Rev. Elizabeth Bryce thanked and acknowledged the members whose term of service is up. They thanked and acknowledged particularly the Stewards, Elders, and Councillors whose positions or functions have changed dramatically with the adoption of the new Organizational Structure.

#### 16. Property Report and Plan

Brian Hamilton reviewed the Property Renewal Fund handout. He stated that the storage space recovery which is showing on the budget is not yet done. In terms of new equipment, the large screen TV has already been purchased. Another cost which is not showing is the Broadcast cost which is \$3,000. Brian also encouraged people to look at the handout called Long Range Property Renewal Plan 2020-2028.

MOTION: Moved by Brian Hamilton, seconded by Nancy McPherson that the Property Renewal Plan for 2020 as found on Page 28 of the 2019 Annual report, be approved.

CARRIED with 1 opposition

#### 17. Faithful Footprints Grants

Rev. Elizabeth Bryce spoke about the United Church of Canada's (UCC) new Energy Conservation Project. The UCC has a goal to reduce the carbon footprint of the churches across Canada by 80% by the year 2050. A church applying for this grant will receive \$2 in grant money for every \$1 contributed by the congregation. The maximum contribution for a congregation is \$15,000, and will be matched by a grant of \$30,000 by the UCC. The grant requires a recognized energy audit in order to be awarded. Rev. Bryce recommended that it is something for the RPUC congregation to consider.

#### 18. Trustees Report

Sheila Faure, Chair of Trustees, thanked the following trustees for their past service: Daryl Lindberg, Jacqueline Newton, Keith Harris, and Norm Edwards. The Board of Trustees now has seven members. She referred to the Trustees Report on page 16 of the 2019 Annual Report. Only one request was granted in 2019 for \$3,000. It was given to the Affirming Ministry Working Group to wrap up their work and achieve their concrete goals, e.g. signage, etc.

MOTION: Moved by Sheila Faure, seconded by John Scollick that we approve with thanks, the resignation from the Board of Trustees of Daryl Lindberg, Jacqueline Newton, Keith Harris, and Norm Edwards. CARRIED

#### 19. Stewardship Report

Brian Hamilton thanked Ron MacPherson for being the Chair of Stewardship for 2019. The theme was "Generosity". Membership is down, but PAR signups show a slight increase.

## 20. Recognition of Staff

Patricia Whitridge acknowledged the work done during the year by our ministers- Rev. Elizabeth Bryce, Rev. Steve Clifton, and Rev. Georgina Fitzgerald. Patricia thanked Andrew Ager and Iain Macpherson for all their musical contributions. She also thanked Debi Brown, Administrator, and Debby Gerro, Admin. Assistant. A wonderful celebration was given for Paul Sorg, our retiring custodian on October. 27, 2019. Thanks to Geoff Scollick for stepping into that position, especially just before the Bazaar.

## 21. Other Business

There is no other business

## 22. Closing Remarks

Patricia Whitridge thanked all those in the congregation who have helped to make the Structural Reform a reality. She thanked those who continue to serve and for the support of the congregation. Kudos go to those who prepared today's lunch which we happily shared today.

## SENDING FORTH

## 23. Commissioning and Benediction

Rev. Steve Clifton gave the Benediction.

MOTION: Moved by Heather Ingrams, seconded by Wayne Bond to end the meeting. CARRIED

Patricia Whitridge extinguished the Christ Candle.

---

Patricia Whitridge, Chair of Council

---

Cathy Hollands, Recording Secretary

---

Date